

One Price to All

BUICK

Sold Strictly On It's Merits

Never mind what any dealer promises you, you owe it to yourself to find out what the Factory Guarantee is on the automobile you propose buying and you should insist on this guarantee being made a part of the contract you sign when purchasing an automobile.

Some automobile manufacturers give no guarantee at all. That is one of the reasons why some dealers must offer you special inducements and discounts to sell their cars.

Investigate The BUICK Guarantee

Lancaster Automobile Co.

230-238 WEST KING STREET. LANCASTER, PENNA.

The largest and only strictly first class fireproof garage and repair shop in Lancaster City or County.



Are You Undecided

where to buy your bill of Lumber? If so, all you have to do is look at the prices we are quoting for

HIGH GRADE LUMBER

as well as everything that is included in building, for interior or exterior work, from the Timber in your foundation to the Shingles on your roof.

E. S. MOORE

Dealer in

Coal, Lumber, Grain

FEED, HAY, STRAW, SLATE, SALT, CEMENT AND FERTILIZER

A large stock of Feed constantly on hand. Highest cash price paid for grain

Estimates of Lumber and Mill Work a Specialty

FLORIN, PENNA.

WOOD FURNITURE

Is the only kind I sell—Furniture that is Furniture

Roekers Mirrors Hall Racks

Picture Frames Ladies' Desks

Extension & Other Tables, Davenport

China Closets, Kitchen Cabinets

In fact anything in the Furniture Line

Undertaking and Embalming

H. C. BRUNNER

MOUNT JOY, PENNA

YOU WILL GET TEN CELEBRATED

S. & H. Trading Stamps

WITH EVERY DOLLAR'S WORTH OF COAL PURCHASED FOR CASH AT



F. H. Baker's

Coal and LUMBER YARDS

Mount Joy, Penna.

Sole agent for Congo Roofing No. 1 Cedar Shingles always on hand. Also Siding, Flooring, Sash, Door, Blinds, Mouldings, Laths, Etc. Agent for Alphon Portland Cement. Also Roofing Slate. Estimates Quickly and Cheerfully made on all kinds Building Material Telephone No. 833. Opposite Old P. R. R. Depot.

Prices Reduced

- All Soft Straws now\$1 to \$2
- All Soft Straws now75¢ to \$2.25
- Odd lots in both,35¢ to \$1.12

Get South American Panamas at the right price.

Gingert & Haas

1000 N. St. Lancaster.

Farmers Column

VERY VALUABLE INFORMATION FOR THE FARMERS

Using Iron to Pave Roads—The Proper Feeding of the Cow—Proper Feed for Brood Sows—The Culling of the Brood Sows—Other Notes

Grains are excellent to hide unsightly places about the farm.

Good garden work cannot be easily done unless good tools are available. See that all tools are in good condition and that you have those best adapted for your work.

It is generally better to delay the pruning in peach trees until the blossom buds begin to show a little pink, as then the pruning need not be as severe as would be necessary if all of the fruit buds are killed.

For the average cow about six pounds of grain should be fed per day, provided a good supply of roughage, such as hay, fodder or silage is available. Heavy producing cows can handle more than this amount of grain and return a profit for it, but only cows of strong constitution and exceptional productive capacity can yield economic returns under heavy feeding. Some cows will respond to liberal feeding with an increased flow of milk, while others will not. High-producing cows should receive more feed than low-producing cows.

If a sow raises but three pigs, says Professor Smith of Purdue university, it means that they are costing five dollars each. If instead of three she raises five, the initial cost is reduced to three dollars per head. If she is a very prolific sow she may raise ten, in which case the debt represented by each pig is only \$1.50. When the breeder heartlessly culls out his sows that produce stock that never attain good size; when he promptly sends to the block the sow with small litters; when he gets out of his herd the peevish hogs and the hogs of low vitality, then he will hear less about the relative advantage of the cross-bred hog.

A subscriber asks if cooked potatoes, middlings and skim milk make a good ration for brood sows before farrowing, and states that a neighbor advised him not to feed skim milk to sows before they farrow. This is a good ration for a brood sow. The protein in the skim milk will balance up the starch in the potatoes and the middlings being a well balanced feed no trouble need be anticipated from feeding this combination so long as the sow has plenty of exercise and feed just sufficient to keep her in a thrifty condition. Potatoes are a rather bulky feed and bulk is an important factor in a satisfactory ration for brood sows.

Since it is important that a cow should have enough feed to satisfy the appetite, the proportion of coarse feed to grain must be adjusted to her actual needs. Roughage, in a general way, should be fed according to her size, allowing two pounds of hay per hundredweight when it is the only roughage used. When silage is fed, the general rule may be to feed one pound of hay and three pounds of silage per hundredweight and the balance of the nutrients needed should be provided in concentrates, except that when roots are fed they will take the place of a part of the grain at the rate of ten pounds of roots for one pound of grain. These directions are only general as in practice it will be found that spare, big bodied cows will take relatively more roughage.

In the last few years decided improvements have been made in highway construction. The development of the automobile has done much to further new discoveries in road making. The French have begun the use of a paving material consisting of iron shavings or iron excelsior embedded in concrete. The metallic shavings come in sheets or masses, which are broken apart with difficulty, owing to the intertwining of the filaments and which are somewhat elastic. In the construction of paving blocks a mold is filled with these iron shavings and the interstices are filled with cement sufficiently fluid to penetrate the entire mass. The blocks thus formed possess great strength and resistance to abrasion. They are also elastic under blows or jarring. They have a resistance to compression of about one hundred and fifty thousand pounds to a square inch and a tensile strength four times that of cement. The cost of construction is the same as that of ordinary macadam.

Deafness Cannot Be Cured

by local applications, as they cannot reach the diseased portion of the ear. There is only one way to cure deafness, and that is by constitutional remedies. Deafness is caused by an inflamed condition of the mucous lining of the Eustachian Tube. When this tube is inflamed you have a rumbling sound or impure hearing, and when it is entirely closed, deafness is the result, and unless the inflammation can be taken out and this tube restored to its normal condition, hearing will be destroyed forever; nine cases out of ten are caused by Catarrh, which is nothing but an inflamed condition of the mucous surfaces.

We will give One Hundred Dollars for any case of Deafness caused by Catarrh that cannot be cured by Hall's Catarrh Cure. Sent for circulars, free.

F. J. CHENEY, & Co., Toledo, Ohio.

Sold by Druggists, etc.

Take Hall's Family Pills for constipation.

Wheat Price Soaring

May wheat jumped \$1.12 a bushel at Chicago on

HOME HEALTH CLUB

GRUNTERS: The famous Dr. Holmes stated, many years ago, that the best possible insurance of long life was for a young man to be rejected by a life insurance company. A young person is seldom concerned about matters that pertain to health. It takes a severe jolt to awaken them to a realizing sense of what good health means. A friend of mine, a near neighbor who had practiced medicine for over 50 years, who recently died in his 87th year, once told me that when he was 25 years of age a consultation of physicians pronounced his case hopeless and told him that he must not marry because he would in all probability die within six months and could not possibly live more than one year. He attended all of their funerals and his children and grandchildren are all healthy, robust people.

Here is a little editorial from the New York Times that gives some very good illustrations along the same line:

"The battle for existence is not to the strong, as shown by the case of the woman of Trent, Pa., a life-long invalid, who died last week at the age of 101. President Victor C. Vaughan of the American Medical Association, multiplies instances of great mortality among strong, busy men and women suddenly attacked by disease. They are not prepared for its trials, they put for their strength in sickness, and they are vanquished. Those who are threatened before they are stricken live long. They may even attain vigorous and lasting health. The case of Theodore Roosevelt, who was a sickly child, is in point. Liorace Fletcher, a prey to a complication of diseases, awoke to his danger when rejected for life insurance at 49, and by taking thought grew younger until—Director Anderson of Yale gymnasium pronounced him more strong and enduring than his young athletes. John D. Rockefeller, who seemed a hopeless dyspeptic many years ago, has just rounded out his seventy-fifth year in good physical condition. The mystery of sickness is the mystery also of discerning health. Even the most desperate cases have rallied—note that of the woman who a year or so ago pleaded that the doctors put her to a painless death because she was doomed to lie, without moving hand or foot, a lifelong burden to herself and her family. Press dispatches proclaimed the other day that she recovered and was no longer an invalid. Life itself is a reaction against external forces that threaten it, and a conversion of those forces, or part of them, into weapons of defense. In such emergencies pluck, grit and coolheadedness count for much and when they have extricated their displayer, make his life still more useful to those about him.

Courage is one of the great factors in the battle against weakness and the practice of common sense methods of living is another. I could refer you right now to a number of people who are living in comfort, doing their daily tasks with ease and pleasure but whose lives had been given up by a council of physicians. Best of all the method of restoring them to health is of such a nature that it keeps them in good health.

Eight Parties on Next Ballot
The November ballot will be just as unwieldy as the ballots of past years, for there are eight straight party tickets entitled to a place on it and before the last day for filing nomination papers there probably will be several more. A convention of labor men from various parts of the State proposes naming a state ticket at Harrisburg on Friday.

The State Department is engaged in preparing the ballot so that it will be all ready to send to the various counties as soon as additions are made to it after the last day for filing nomination papers, September 29.

The parties which now have the right to appear on the ballot are Democrat, Washington, Republicans, Socialist, Bull Moose, Keystone, Roosevelt, Progressive and Prohibition.

To Elect a Bishop

A vote is now being taken for the election of a bishop of the Brethren in Christ church in the northwestern section of the county to succeed the late Bishop Aaron Martin. The first ballot was taken last Sunday at Cross Roads, to be followed at each of these meeting houses on successive Sundays: Conoy, Reich's, Elizabethtown. The candidates are the following ministers of this district, named in order of their service in the ministry: Revs. J. N. Martin, Elizabethtown; Andrew Lehman, York county; A. Z. Herr, East Donegal; Abner Martin, West Donegal; L. O. Musser, East Donegal.

Business Change

The Coble warehouse at Bellaire, which was recently purchased by B. S. Stauffer & Co., will be opened for business, September 1, 1914, under the management of James A. Risser, of Elizabethtown. They will carry a full stock of feeds of all kinds, hay, straw, seeds, flour, salt, coal, etc., and invite the patronage of the community. Every effort will be made to accommodate the public.

Snake With Many Young Ones

A snake killed by Jacob Snavely a few days ago on the H. W. Brandt farm adjoining this Borough, had fifty-four young ones. This is surely prolific—Elizabethtown Chronicle.

PENNSYLVANIA DUTCH.

What Shwikkey Bumblecock Has To Say This Week



Ich denk der viset oil des ich bin ortlicher ferduller bissier mon bin olavlie. Ich hop of koars nix abotichs tzu dua over ich bin enyhow bisy.

Letsich wuch war ich amole driva on de Lebon fair un de wuch tzaie ich noch Middletown ga, un won de Betz mere nix in der gong shitate gear ich aw nooch Lengeshter un Yorrick.

Sis immer so feel tzu tzana on a fair un ich denk ich mus eich amole fertzala ves ols mocht. Now der kennet usht gucka defore un aw ep long.

Now ferluss dich druf won ich shrip dewaga kum ich ortlich blot rous mit de worheit, deno mochte aw nix ous vaers dref.

THURSDAY'S STORM

Conestoga Traction Company Sustains Heavy Loss—Power Was Off

This section was visited by a heavy storm on Thursday evening. We escaped in the afternoon and early evening, when thunderstorms passed around, but the one later was a heavy one. There was a big rain fall and the lightning was sharp for a long time prior to during the storm and afterwards.

Apparently the Conestoga Traction Company was the greatest sufferer from the storm. A bolt of lightning struck one of the largest steam generators at the Engle's power plant burning out the machine and entailing a loss of between \$750 and \$1,000. The roof of the substation at Elizabethtown, a building about thirty by forty feet in size, was blown off by the high wind preceding the thunderstorm, but no further damage was caused. The storm caused the cutting out of the trolleys at Salunga and Rheims, on the Elizabethtown trolley line, commencing at 8:45 o'clock and continuing for several hours. As a result the car due in Lancaster from Elizabethtown at 10:45 o'clock did not reach there until 12:35 o'clock Friday morning. This line was the greatest sufferer from delays. In order to make connections all of the 11 o'clock suburban cars were held until 11:45 o'clock.

A terrific rain storm visited Columbia on Thursday afternoon about 3:30 o'clock, but it was peculiar in that it only extended over the central part of the town. Some hail fell. There was no rain at Washington Borough, Mountville or Ironville at this time.

REFUSED TO PAY TOLL

Man With Thresher Runs Machine Through Gate

George Shuman who operates a thresher on contract from farmer to farmer, passed over the Maytown and Elizabethtown road on route to his work several days ago and refused to pay toll on account of the bad condition of the turnpike. In returning, Charles Frank the toll-gate keeper, closed the gate on him. He demanded toll and Shuman refused, when the gatekeeper told him he would have to pay. Shuman went through the gate and took it along with him. The incident is causing considerable interest in this section and from reports it is rumored that the gate will be abandoned in the near future.

Barn Struck by Lightning

The large new barn at Cordella, owned by Peter A. Gable, the Columbia butcher, was badly damaged by a cold bolt of lightning Thursday. The bolt struck one end of the barn splintering it from the roof to the ground. The rafters were badly damaged and a large chimney knocked down.

Fortunately, the structure did not take fire, for it was filled with a large quantity of wheat, oats and hay. The barn was practically new, having only been built last spring, and the loss will be considerable, as one end will have to be rebuilt.

Married at Landsville

Charles S. Ament, residing near Lancaster and Miss Eva M. Weaver, of East Hempfield, were united in marriage by Rev. H. S. Hershey at the home in Landsville. Mr. and Mrs. Ament left on a trip to Philadelphia and Atlantic City.

Snake With Many Young Ones

A snake killed by Jacob Snavely a few days ago on the H. W. Brandt farm adjoining this Borough, had fifty-four young ones. This is surely prolific—Elizabethtown Chronicle.

RESULTS



YOUR CHICKENS DON'T GET HALF ENOUGH TO EAT if you do not feed

The PARK & POLLARD GROWING FEED

No Magician in the Arabian Nights could produce results any faster than this feed.

From 1 1/2 oz. when hatched to 10 lb. weight at six months is nothing unusual on this ration.

TRY IT at our expense;

Your money back if it does not do better than they claim.

BRANDT & STEHMAN, MT. JOY, PENNA.

Vaccination Notice

The laws of Pennsylvania require all children to be successfully vaccinated before they be admitted to a public school. Parents kindly see that this is attended to before sending your children to school. The Boro Schools will open Aug. 31. St

W. M. HOLLOWBUSH
NOTARY PUBLIC
Attorney-At-Law
48 West Main Street, Mount Joy, Pa.
Days at Lancaster, Monday and Friday at No. 52 North Duke Street.

CHARLES S. FRANK

AUCTIONEER

MOUNT JOY, PA.
Prompt Attention given to Sales of Real Estate and Personal Property. Terms Moderate. Bell Telephone

For Sale Cheap—A large gas generator for an automobile in first-class condition complete with bracket. Only \$5.00. Apply at this office.

Read the Bulletin

RAISE CALVES WITHOUT MILK

BOOKLET FREE

Every Farmer, Dairyman, Cattleman, in fact everyone who owns cows will profit greatly by reading it. "Milkless Calves" is the only low priced booklet on this subject. It shows how you can raise your own best milkers and increase the milk production of your herd to feed calves quickly and economically on

Ryde's Cream Calf Meal

—the most successful milk substitute on the market—the standard of perfection. Thousands of farmers have used it and nothing else for years. It is not a stock food—it is a complete food that has been definitely proved the best for raising calves. Guaranteed to give results. A trial is convincing.

BRANDT and STEHMAN

MOUNT JOY, PA.

Advertise in the Mt. Joy Bulletin.

Advertise in the Mt. Joy Bulletin.

Advertise in the Mt. Joy Bulletin.

CLOSING OUT

AN EXCEPTIONALLY LARGE LOT OF ODDS AND ENDS

IN ALL KINDS OF FOOTWEAR FOR MEN, BOYS, LADIES,

MISSSES AND CHILDREN AT PRACTICALLY

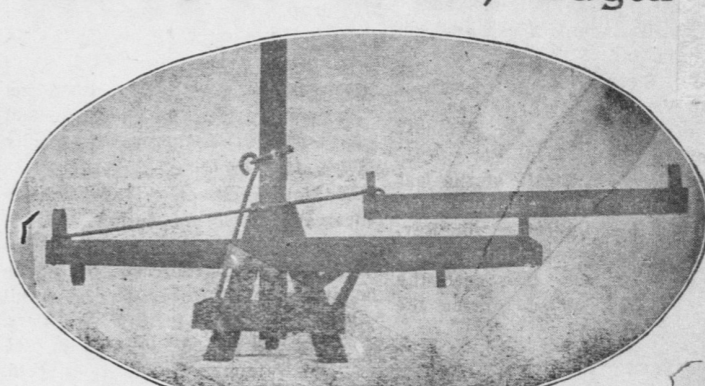
Your Own Price

Harry Laskewitz

EAST MAIN STREET MOUNT JOY, PENNA.

Three Horse Evener

Can Be Put On Any Wagon



GUARANTEED TO PULL EVEN

For Sale By

M. B. HIESTAND, Mt. Joy

The seasons are all late this year but when they do come they're upon us with a rush. Are you ready when Summer bounces in? Better prepare now by buying your

SUMMER MILLINERY

Stylish Shapes in Hats For Ladies & Children, Newest Colorings in Ribbons & Flowers

FLORA DRAB

East Main Street

Advertisement for Florine Drab

Advertisement for Florine Drab

Advertisement for Florine Drab

Advertisement for Florine Drab

Advertisement for Florine Drab

Advertisement for Florine Drab

Advertisement for Florine Drab

Advertisement for Florine Drab

Advertisement for Florine Drab

Advertisement for Florine Drab

Advertisement for Florine Drab

Advertisement for Florine Drab

Advertisement for Florine Drab

Advertisement for Florine Drab

Advertisement for Florine Drab

Advertisement for Florine Drab

Advertisement for Florine Drab