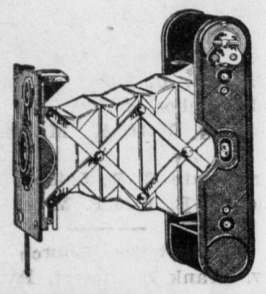


**Electrical**  
 Repairing in all its Branches.  
 Also electrical goods of all kinds.  
 Electric light globes sold & Exchanged for Edison Electric Company.  
 Report all Electric light trouble to me which will have prompt attention.  
 East Main street  
 MOUNT JOY, PENNA.

**Take Notice!**  
 The Undersigned Wish to Inform the Public that They are Prepared to do  
**Practical Horse Shoeing**  
 At Jno. Bombach's Stand, Mt. Joy  
 Special attention given to all work. All diseases of the feet promptly attended to. Your Work Solicited  
**BOMBACH & SHANK**  
 General Blacksmiths and Horse-Shoers  
 MOUNT JOY, PENNA.

THERE'S ALWAYS ROOM FOR A



**Vest Pocket Kodak**  
 The little camera that's built as accurately as a watch. One pull and it is opened, in focus—a slight pressure on the ball bearing shutter release, and the exposure is made—a push and it is closed and back in your vest pocket.  
 Has Kodak Anastigmat lens, giving remarkable definition, and Autotime Scale to insure correct exposure. Size of pictures, 1 1/2 x 2 1/4 inches. Capacity, eight exposures without reloading. Price, \$12.00, with single lens, \$6.00.

Sold by  
**W. B. BENDER BARBER**  
 East Main St., Mount Joy, Pa.  
 WE HAVE EVERYTHING FOR THE AMATEUR PHOTOGRAPHER  
 SHAVING HAIR CUTTING

**Joseph B. Hershey Tonsorial Parlor**  
 Three Chairs, No Waiting  
 Agent for the Middletown Steam Laundry. Goods called for Tuesday and delivered Friday.  
 East Main St. MOUNT JOY

**CHARLES S. FRANK AUCTIONEER**  
 MOUNT JOY, PA.  
 Prompt Attention given to Sales of Real Estate and Personal Property. Terms Moderate Bell Telephone

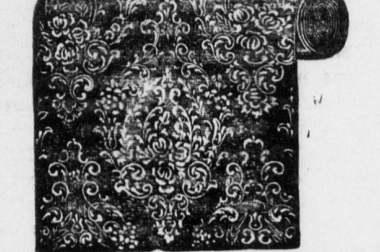
Steam Vulcanizing By Experienced Hands  
**SPEED VULCANIZING COMPANY**  
 NORTH WEST CORNER ORANGE AND PRINCE STREETS Lancaster, Pa.  
 All Work Guaranteed. Quick Service  
 By sending your work to us you will notice the difference in mileage and decreased maintenance cost.  
 Repairing of all kinds done on Inner Tubes and Casings at reasonable prices.

**Pure Spring Water ICE**  
 IN ANY QUANTITY at Very Moderate Charge.  
 Don't fail to see us before placing your order this year.  
**J. N. Stauffer & Bro.**  
 Mount Joy, Penna.

For a Good Clean Shave Or a Classy Hair Cut  
 Stop at  
**H. J. WILLIAMS TONSORIAL PARLORS**  
 W. Main St., Mount Joy  
 Agt For Middletown Laundry

**PATENTS**  
 TRADE-MARKS and copyrights obtained or no fee. Send model, description, drawing and brief description, for FREE SEARCH and report on patentability. \$5 yearly expense.  
 Read Patent Law for NEW BOOKLET. Full of patent information. It will help you to secure a patent.  
 READ PAGE 12 and 13 before applying for a patent. Write today.  
**SWIFT & CO.**  
 PATENT LAWYERS,  
 3 Seventh St., Washington, D. C.

**Wall Paper Time**



Is at hand and so am I with the finest line of samples ever shown. I do all kinds of paper hanging at very reasonable prices. It will pay you to see my samples and get my prices before placing your order for papering this Spring.

**Emanuel Myers**  
 Bell Phone NEWTOWN, PA.  
**COW-EASE**  
**WHAT IT WILL DO**  
 It keeps off flies.  
 Prevents lice on cows and horses. Soothes cows and horses, skins. Will not injure the most sensitive. Does not gum the hair.  
 Lasts longer in the sun and wind. Guaranteed to increase the flow of milk.  
 Gives cows a chance to feed in peace.  
 Will cleanse the poultry house. Make horses good natured. Will do all we claim for it.

FOR SALE AT  
**Chandler's**  
 DRUG STORE  
 West Main Street, Mount Joy, Pa.  
 Sunday Hours, 8 to 9 A. M.  
 Sunday Hours 5 to 7 P. M.



**Beware of Mosquitoes**  
 They are dangerous. They often spread disease. Don't let them bite you.

**Rexall Skeeter Skoot**  
 Will keep mosquitoes away from you. Just rub a little on the exposed parts of your body, and they won't come near you. Satisfaction guaranteed or money back.  
 10. 25 & 50¢  
 Sold only at  
**E. W. Garber**  
 81 E. MAIN ST., MT. JOY, PA.  
 THE REXALL STORE

VISIT THE  
**Mount Joy Garage**  
**PETER S. BRUBAKER, Proprietor**

If your Ford needs attention, I will be pleased to have you call on me. I carry a complete line of repairs for these cars and can fix you up on short notice.  
**General Repair Work a Specialty**  
 Also Automobile Hiring Agent for Firestone & Pullman Tires.  
 Read the Bulletin

**IMPORTANCE OF ROAD MAINTENANCE**

The Department of Agriculture Offers Suggestions Which are of Value  
 There is no phase of the road problem more important than that of maintenance. The general impression that there are certain types of roads that are permanent is erroneous. No permanent road has ever been constructed or ever will be, according to the road specialists of the United States Department of Agriculture. The only things about a road that may be considered permanent are the grading, culverts and bridges. Roads constructed by the most skillful highway engineers will soon be destroyed by the traffic, frost, rain and wind, unless they are properly maintained. But the own foolish action. Whenever any life of these roads may be prolonged thing is put into the stomach which by systematic maintenance. A poor is evil and will do us harm, unless road will not only be improved, by it is of such a nature that it come better in time than a good quick effort is made to throw off the harmful element. Work is to be done in earth road maintenance is to keep the surface well drained. To insure good drainage the ditches should be kept open, all obstructions removed and a smooth crown maintained. Except for very stony soil the road machine or scraper may be used very effectively for this work. The machine should be used once or twice a year and the work should be done when the soil is damp, so that it will pack and bake into a hard crust. Wide and shallow side ditches should be maintained with sufficient fall and capacity to dispose of surface water. These ditches can in many places be constructed and repaired with a road machine.

All vegetable matter such as sods and weeds should be kept out of the road as they make a spongy surface which retains moisture. Clods are also objectionable for they soon turn to dust or mud and for that reason roads should never be worked when dry or hard. Boulders or loose stones are equally objectionable if a smooth surface is to be secured.  
**SYSTEM COST \$18,000,000**  
 Pennsylvania Railroad Up-to-Date In Equipment  
 With the completion on September 1st of an elaborate plan of improvements in its automatic block signal system, the Pennsylvania Railroad will have more four-track line operated under automatic signals than any railroad in the world.  
 At a cost of \$6,000,000 the Pennsylvania Railroad has in the past three years equipped 253 miles of its main lines with automatic signals.  
 On September 1st the main line of the Pennsylvania Railroad between Pittsburgh and New York and Philadelphia and Washington will be equipped with automatic block signals.  
 The signal system on the Pennsylvania Railroad East of Pittsburgh and Erie, represents an estimated investment of approximately \$18,000,000. The difficulty in arriving at more than an approximate figure is due to the fact that many changes have been made in the signals from time to time in the past thirty years. The electro-pneumatic interlocking switch and signal system in the New York Station and on the electric line between Sunnyside Yard, L. I., and Manhattan Transfer, N. J. alone cost \$1,750,000.  
 It takes a normal force of 1800 men to maintain the Pennsylvania's signal system. It costs to keep these signals in order no less than \$1,500,000 a year.

**Family Reunion at Chickies**  
 A reunion of the Gram and Rudisill families of this section of the county was held at Chickies Park Thursday. All had a delightful time and music was provided as a feature of the outing. Several generations were represented. John Gramm of Atlantic City, journeyed the longest distance to attend the event.  
**No Change in Route**  
 The Lincoln Highway will not be re-routed. In a letter from the president of the Lincoln Highway Association to President Wilson in answer to his request that the highway be changed, it is stated that such action is beyond the control of the association. Hence the Lincoln Highway will go through Lancaster as originally planned.  
**Congratulations, John**  
 John J. Shultz, son of Joseph K. Shultz of Washington Boro, has been appointed postmaster of that town, he having recently passed a civil service examination with a high average. There is some talk of moving the post office from its present location to the store of Frank C. Witmer four doors away.  
**Erecting Big Stack**  
 W. W. Fairer is repairing and will re-erect the large stack that was damaged at the Billmyer squarrie during the recent storm. The stack is about 110 feet long and weighs ten tons. Work on the stack is now being done at the Fairer shops and when completed a force of men will put it in place.  
**Tax Collector Short**  
 The accounts of tax collector W. N. Hall of Carlisle are being gone over. Thus far he is over \$3,000 short.  
**Want Mt. Gretna Incorporated**  
 Summer residents of Mt. Gretna are agitating for the incorporation of the resort into a borough as the direct result of the robbery of the post office by safe blowing, the perpetrators being successful in their work thru the lack of police protection. The incorporation would mean the bringing in of North Londonderry and West Cornwall townships.

**STONE INSTEAD OF PHOSPHATE**  
 Landis Bros., of Rheems, Will Open a Big Quarry in Donegal  
 The Landis Brothers recently discovered a good thing up in Donegal on their valuable farm of 100 acres in the highest state of cultivation, there being about ten acres that contain high-grade limestone to such an extent that they can operate a quarry with a forty-foot breast. They procured a number of samples from an abandoned quarry, and forwarded them to a chemical engineer, who returned an analysis of 97.19 per cent. lime.  
 Professor J. W. White, an expert of the Pennsylvania State College, recommends ground limestone of high analysis as being equal to any ordinary phosphate. He says phosphate used to excess sours the soil, whereas ground or pulverized stone has the opposite effect. Limestone sown about one ton per acre has been tested for wheat and grass, producing a special yield of wheat and two enormous crops of clover. The two following years the second-year stalks measured 40 inches long. This is the very thing the Lancaster county farmers are in need of.  
 The Landis Brothers will endeavor to restore the sweetness of the soil with pulverized limestone. Last Monday they put a large force to excavating for an extensive crushing and pulverizing plant that will be able to prepare from 30 to 40 tons per day. The plant will include three or more large bins for storage, from which they will sell in 100 pounds per bag, or loose, as the purchaser may desire. They anticipate having the plant in full operation about the beginning of August, in order to meet the demand for fall seeding, which commences about September 20.  
 At Denver, Pa., there is a large plant of the same kind, where farmers use the limestone in preference to phosphate.  
**MAY PROVE FATAL**  
 When Will Mount Joy People Learn the Importance of it?  
 Backache is only a simple thing at first; But if you find 'tis from the kidneys That serious kidney troubles may follow. That dropsy or Bright's disease man be the fatal end. You will be glad to know the following experience.  
 "This is the honest statement of a resident of this locality.  
 Mrs. John Clark, E. Market St., Marietta, Pa., says: "My condition was such that it caused me much misery. I suffered every day from backache and pains in my sides and my head ached all the time. I had dizzy spells and sometimes found it hard to breathe. My whole body became swollen and I was in a serious condition. Doan's Kidney Pills were recommended so highly that I used them. They cured me permanently." Price 50c. at all dealers. Don't simply ask for a kidney remedy—get Doan's Kidney Pills—the same that Mrs. Clark had. Foster-Milburn Co., Prop., Buffalo, N. Y.

**BIG BARN BURNS**  
 Spark From Traction Engine Supposed to Have Destroyed Building  
 A large bank barn of Mr. Joseph Huntzberger, with all its contents, burned Wednesday about four o'clock. The loss will reach \$5,000 and is partially covered by insurance.  
 The Huntzberger farm is located near Bellaire, four miles northeast of Elizabethtown and is one of the largest in that section, being eighty feet long and nearly as wide. At the time of the fire the farmer was thrashing with a traction engine outfit and the presumption is that the building took fire from a spark from the engine.  
 The men, eleven in number, were busy working away thrashing wheat when some one yelled "fire." Every one did his best, but the barn was literally a timber box, filled as it was with the season's crops, and in a few minutes it was a mass of flames, and in a very short time was entirely destroyed.  
 Seven hogs, part of the farm implements and a couple of wagons were burned. The horses and cattle were saved.

**At Work on State Road**  
 A sprinkler and road roller were unloaded at Middletown last week to be used on the state highway between Middletown and Elizabethtown. Over a dozen men were at work at the upper end this week and more at the lower end. Stones will be used to fill the road.

**REMARKABLE RECOVERY**  
 NEW TISSUE BUILDING TABLETS FOR RUN-DOWN MEN  
 Prove it Yourself by Use of Tonline Tablets  
 "By George, I never like the effects of the treatment, Tonline Tablets, up of weight and lost. It acted more like a medicine," said a well-known man yesterday in speaking of a revolution that had taken his condition. "I began to there was nothing on could make me fat. I tried digestives, heavy eating, beer and almost everything could think of, but without Any man or woman who can recover normal weight best new treatment Tonline Tablets. "I have been thin for years and decided to try myself Well, who look at myself in the mirror now think it is somebody else. I put on just forty pounds during the last forty days and never felt stronger or more nery in my life. Tonline Tabs are a powerful inducer to nutrition, increases cell growth, food, increases the number of blood corpuscles and as a necessary result builds up muscles, and solid healthy flesh, and rounds out the figure."  
 For women who can never appear stylish in anything they wear because of their thinness this remarkable treatment may prove a revelation. It is beauty maker as well as a form builder and nerve strengthener. Tonline Tabs cost \$1 for a 50-days' treatment, at druggists, or mailed by American Proprietary Co., Boston, Mass., Aug. 5-4t

**Westenberger, Maley & Myers**  
 125-131 East King St. LANCASTER, PA.

**THINK OF THIS**  
 Dixie Tires and Tubes, guaranteed 3,500 miles—30x3 casing, \$9.50; 30x3 1/2 Anti-Skid, \$10.25; Red Tube, \$2.20;  
 Pennsylvania Oilproof Tires and Tubes guaranteed 4,500 miles—30x3 casing, \$12.75; Oilproof 30x3 1/2 Vacuum Cup, \$18.00; Gray Tubes, \$2.35.  
 Do not wait until you have the accident or are compelled by law to get your horn.  
 Dean Battery Horn, guaranteed for 5 years, \$6.00.  
 Hand Klaxons at the usual price.  
 Bicycles made to order from \$25.00 to \$35.00. Guaranteed tires, etc.  
 Lubricating Oils, Greases, Columbian Ignition Batteries, Prest-O-Lite Service Yard Storage free.  
 Price of repair work compares with any.

**Barr's**  
 NEW HAVEN