

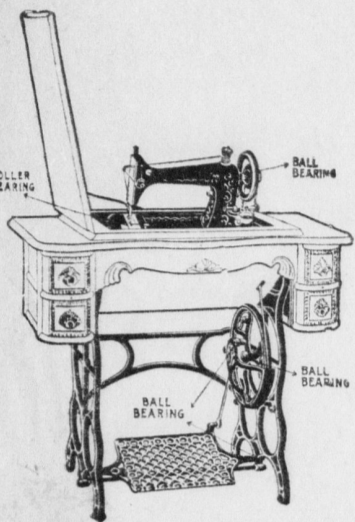
WATT and SHAND

Corner S. Second and E. King Sts.

The "Reliance" Time Tried and Tested Sewing Machine

\$19.50 & \$21.50

The price of a sewing machine, while important, is not by any means the only point to consider in the purchase of a sewing machine. Of far greater importance is the action of a machine under



Our Co-operative Club.

A helpful plan to get an up-to-date Sewing Machine on easy-to-pay terms

- \$25.00 MACHINES AT \$15.50.
- \$30.00 MACHINES AT \$19.50.
- \$35.00 MACHINES AT \$21.50.

A high-grade, high-arm Machine roller and ball-bearing construction; one of the country's four greatest makes; oak case, carved and polished, swell front, automatic lift, five drawers, drop head; complete set of attachments and our ten-year guarantee.

You pay \$2.00 when you join the club, and \$1.00 a week until paid. No club fees, no interest charges; simply buying a Sewing Machine on the club plan at the spot cash price.

JOIN AT ONCE, AND HAVE THE USE OF THE MACHINE.

all kinds of sewing conditions. Whether or not it is easy to operate at all times and under all circumstances; the size and uniformity of the stitches on heavy as well as fine materials; the grade of the materials, and the style of its construction.

These and many other points should be thoroughly demonstrated to you before you purchase a machine.

RELIANCE MACHINES are always completely demonstrated. Every kind of trial and test you can think of has been tried on and been successfully met by the RELIANCE SEWING MACHINE.

It will do the work required in any home, with an ease and beauty of finish that will astonish you. It is silent and very easy to operate, besides being equipped with all the newest attachments, and a few not found on any other make of machine.

The price is the same whether you pay cash or choose the easy-to-pay plan of \$2.00 down and \$1.00 a week. A set of the famous Greist nicked steel attachments goes free with each machine. Guaranteed ten years, and will last a lifetime with proper care. It's the machine you need right now. Buy it at once, and have the use of it while paying for it.

THE CHALLENGE SEWING MACHINE is another wonderful value for a low price; in fact, it is the best sewing machine \$15.50 will buy anywhere in this country. Guaranteed for ten years—equipped with the newest attachments. Less expensive in construction than the Reliance, but exceptionally high value for the price named.

First Nationals

Opening

(Continued from page 1.)

counsellors. This screen is built around a central public space and arranged at either side of the entrance vestibule are the recessed alcoves for the officers of the bank, with consultation and ladies' rooms adjacent. The wickets for the different tellers, bookkeepers, savings department, etc., are so disposed as to accommodate customers without confusion or interference, while a large check-desk is conveniently located in the center of the public space.

The working space of the counter-screen is fully equipped with the usual fittings used in connection with advanced banking methods, every possible device for the convenience of the tellers and bookkeepers being worked out and adjusted with regard to the particular work for which it is intended.

Perhaps the most interesting feature that meets the eye as one enters the bank is the vault and its large door. This Bank is unusually well equipped with vault work, the walls, floor and ceiling of which are built of hardened steel, two and a half inches thick, and entirely surrounded by solid concrete one foot thick. Fitted to the front of this vault is the steel door, weighing many tons, equipped with pressure system, time lock, etc., and constructed burglar-proof as far as human ingenuity can devise. The interior of the vault is furnished with day gate and a grilled enclosure in which the chests for the Bank's funds are kept, the forward portion of the vault is furnished with safe deposit boxes for the use of customers. The spaces at either side of the vault at the rear of the building are reserved for the use of the working-force of the Bank on one side, and the safe deposit department on the other; here one may find the committee room and coupon booths, furnished in fine hardwood.

Above the vault, at the rear of the building, is a mezzanine floor which contains the large directors' room, corridor, etc. The directors' room is of ample proportions, tastefully decorated and furnished, and arranged with large windows overlooking the banking space.

This Bank, complete in every detail, is probably for its size, one of the best in the state. The design and execution of the contract was done by Hoggson Brothers, Contracting Designers, New York City, who engaged the services of T. C. Vischer as architect.

The First National Bank of Mount Joy owes its inception to a private Bank conducted by Dr. Andrew Garber as early as 1857. Following this nucleus it was merged into a State Bank in 1863, then known as the Farmers' Bank of Mount Joy. After continuing as a State institution for a short time it availed itself of the National Bank Act of 1863, and was chartered as the First National Bank of Mount Joy, November 1864, with M. B. Peifer, President, and Dr. Andrew Garber, Cashier. With this organization it endeavored to serve the people with the best of its ability at the Bank's former quarters as shown by the illustration.

Dr. Garber remained as Cashier until 1890 when he resigned. Mr. M. B. Peifer resigned as President in 1880, when Henry Reist was elected President but died after serving one year. In 1881 Jacob W. Nissly was elected President and served until his death in 1905, when he was succeeded by the present President, Mr. Thomas J. Brown. In 1890 the late Martin M. Brubaker, who had been in the bank's employ since 1866, was elected Cashier and served until his death December 23rd, 1913. One week thereafter Mr. Reuben Fellenbaum was elected Cashier to succeed Mr. Brubaker. Mr. Fellenbaum entered the employ of the Bank when sixteen years of age and served as Teller for fifteen years and as Assistant Cashier for six years, being in the Bank's employ for the past twenty-one years.

On November the 1st, 1910, the directors purchased the present site of the new Bank Building and May the 15th, 1913, the initial steps were taken preparatory to the erection of the present magnificent structure.

An inspection of the splendid new building as we find it situated on the north west corner, at the intersection of the two most prominent streets of our town, will prove to all that we are prepared to serve the public in a manner befitting an institution of this kind. The building was designed, erected and equipped by people who have a national reputation in this line of work, and from the description of the building, it will be seen that for beauty of design and for conveniences afforded our customers, it is second to none in the country. We desire to serve our patrons and the public to the best of our ability, and shall ever aim to merit a continuance of their confidence.

With our modern bank facilities and representative Board of Directors, the officers of the bank feel that still more faithful and efficient service can be rendered our patrons and the public.

Board of Directors

- Thomas J. Brown, J. S. Carmany, H. H. Myers, Abram L. Nissly, M. S. Bowman, Amos N. Musser, Benj. O. Musser, C. N. Newcomer, John G.

Stauffer, Abram W. Shelly, S. S. Woigemuth.

Officers

- Thomas J. Brown, President; J. S. Carmany, Vice President; H. H. Myers, Secretary; R. Fellenbaum, Cashier.
- S. Hess Hershey, Teller; D. H. Hermsley, Clerk; Miss Mary Shires, Bookkeeper; Abram N. Stauffer, Janitor.

Concerning Deposits

Will receive on Deposit, any amount from \$1.00 up. Will open joint accounts in two names, payable to either or the survivor.

Solicits your patronage and is prepared to receive your deposits in any of the following ways: Open Account, subject to your Check.

On Time Certificates of Deposit, bearing 3 1/2 per cent. interest for 12 months, or 3 per cent. interest if left from six months to twelve months.

Savings Fund Department

Interest at the rate of three and six tenths per cent. per annum. Interest credited January first and July first. Deposits made on or before the first business day of the month, draw interest from the first. Books should be presented with deposit and MUST be presented when withdrawals are made.

We also have the popular Holiday Saving Fund system. Call and ask about it.

RHEEMS

Advertise in the Mt. Joy Bulletin. Good Friday was observed by a few throughout this section.

The Frank Pierce stone crushing outfit resumed the usual noise several days last week.

Mr. and Mrs. Amos Friday of Elizabethtown, were guests of Mrs. Laura Keller and daughter Anna last Sunday.

Samuel Fry one of the Landis Brothers employes is erecting a milking plant at a Dairy farm near Norristown.

Mr. and Mrs. S. S. Kraybill and aged mother Mrs. Peter Krakbill were Good Friday guests of Mr. and Mrs. Jos. W. Kraybill.

The Easter hat and gown parade caused very little excitement throughout the day. A few from abroad made their appearance.

P. N. Kraybill the Rheems merchant who lost his valuable dog by being killed on the railroad has purchased a savage dog from George Floyd.

Read the Bulletin

George Shissler and force of masons from Elizabethtown, repaired the gable end of the D. G. Brinser brick house which was blown in by the March storm.

Charles Shirk will again fit from the A. S. Bard house to the Phares Landis farm where he can apply his cow knowledge amongst the large herd of dairy cows.

Samuel Fry, the leading potato farmer of this section had over 4 bushels of potatoes planted by noon on Good Friday. On the same day he delivered trees to many of his customers.

There is evidence that the cabbage and beet will be plenty during the coming season. The farmers are taking quite a lot of interest in truck farming owing to the present slump in the price of tobacco.

A. S. Bard has placed tobacco seed under 1620 square feet of muslin which will be measured off to suit the customer. The variety is narrow leaf Penna, the very kind that is expected to be in demand for during 1915.

Mr. Amos Ebersole a prominent Trolley conductor from Pittsburg, was guest of his sister Mrs. Joseph Smith and family near this place. Mr. Ebersole came east to attend the funeral of his mother who died very suddenly.

Gish and Snyder, the West Donegal wholesale leaf tobacco packers have large bulks undergoing the sweating process. They contemplate packing over 150 cases. There are many crops throughout East and West Donegal townships, unsold. Some of them refuse 9 1/2 and 2.

Read the Bulletin

WHY MOUNT JOY MERCHANTS SHOULD ADVERTISE IN THE BULLETIN

Why Do You Name The Brand When You Mean The Commodity?

There are, in the United States, 2672 flour mills with a daily capacity of more than 50 barrels.

There are 232 catsup manufacturers, more than 475 cereal manufacturers, far more than 30,000 brands of soap made by 1038 manufacturers, shoe manufacturers to the number of 2150 and 41 manufacturers of talking machines.

Try to name a brand of flour, a brand of catsup, a cereal, a soap, a shoe or a talking machine, and the probability is that in every instance you will name the brand which is most extensively advertised.

Read the Bulletin. Subscribe for the Mt. Joy Bulletin. Read the Bulletin. Advertise in the Mt. Joy Bulletin.

Read the Bulletin. Subscribe for the Mt. Joy Bulletin. Read the Bulletin. Read the Bulletin. Read the Bulletin. Read the Bulletin.

Read the Bulletin. Read the Bulletin. Read the Bulletin. Read the Bulletin. Read the Bulletin. Read the Bulletin.

VIRILE FIGURE, "THE PIRATE," FOR GREAT EXPOSITION WALLS.



Copyright, 1914, by Panama Pacific International Exposition Company.

When the sculptors at the Panama-Pacific International Exposition began their work they had as an inspiration a task which has appealed to the imagination of the world for centuries, the cutting of the barrier between the Atlantic and Pacific oceans in the Panama canal, and so they have reproduced in the sculpture figures of the early explorers, pirates, the adventurers of the seas, the pioneers, pathfinders. The picture above shows "The Pirate" by Allan Newman, the brilliant American sculptor.

BEAUTIFUL FIGURES TO ADORN VAST EXPOSITION PALACES.



Copyright, 1914, by Panama Pacific International Exposition Company.

Many of the greatest sculptors of the world have produced the wonderful figures and groups to be shown on the grounds and on the great palaces of the Panama-Pacific International Exposition at San Francisco in 1915. The picture above shows one of the exquisite figures by August Jaegers for the great Court of the Four Seasons.

DECORATIVE PIECE FOR EXPOSITION PALACE.



Copyright, 1914, by Panama Pacific International Exposition Company.

Subscribe for the Mt. Joy Bulletin

Everything Good to Drink

NO MATTER WHAT THE U. S. STANDARD BUCK BEER of the READING BREWING CO will be ready for delivery Tuesday, April 7th, 1914. Send in your orders at once. Price \$1.00 a Case Bottled at the Brewery.

FLANAGAN'S The House of Quality COLUMBIA - PA.

Buchanan & Young

115 & 117 N. QUEEN ST. LANCASTER, PA.

18th Anniversary Sale A Great Event

Interesting to Every Woman In Lancaster County Commences

Wednesday, April 15

And Continues All Through The Month

Bargain Offerings

Every Department

TABLES AND COUNTERS filled to overflowing with high grade merchandise.

Come prepared you will be satisfied, pleased and delighted with the Anniversary showing and low prices.

Saturday Will Be a Great Day

18cts. will buy any 25ct. article in the store. Combined with the hosts of Anniversary Prices, we predict a

Big Busy Day--COME

Pick Your Suit From Over 200 Patterns

YOU CANNOT DO THAT ~~ever~~ where—but you can at the leading Clothing Home in Lancaster, which has the distinction of showing as many Men's Suits at the \$15 price alone as most stores show in their entire stocks.

IS BULE SERGE your favorite? IT IS with many men, because it is always dressy (that is, when it is REAL Blue Serge) and because it is so adaptable to Summer usage. Here is a line in which our patrons tell us so often we stand head and shoulders in assortment and value above the average store. And you can only appreciate these words when you see the hundreds of Suits face to face in the store.

BY SELECTING your Spring Suit now you gain the important advantage of a complete assortment, YOUR SIZE IN EVERY PATTERN. And what is so disappointing as later to select the Pattern you want and find YOUR size missing.

Suit prices range from \$8.50 to \$25.

WATCH FOR THE GREATER GROFF & WOLF STORE.

Groff & Wolf Co.

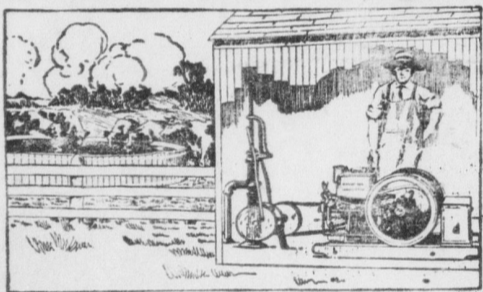
26-28 North Queen Street LANCASTER, PENNA. LANCASTER'S LATEST GROWING STORE

Brinkman's Spring Wall Papers

Are not only a good shade lower in price than the average line—but they allow you such unusual selection. We have all grades, from lowest to highest—with especial emphasis on our immense assortment of Small Figured and Plain Papers, at any price you want to pay.

BRINKMAN 29-30 EAST ORANGE STREET Twenty Years in the Business

International Harvester Oil and Gas Engines



- The IHC Line GRAIN AND HAY MACHINES
- Binders, Reapers
- Headers, Mowers
- Rakes, Stalkers
- Hay Loaders
- Hay Presses
- CORN MACHINES
- Planters, Pickers
- Enders, Cultivators
- Empire Cutters
- Shellers, Shredders
- WILLAGES
- Pea Spring-Tooth, and Disk Harrows
- Cultivators
- GENERAL LINE Oil and Gas Engines
- Oil Tractors
- Mowers-Spreaders
- Cream Separators
- Farm Wagons
- Motor Trucks
- Tramways
- Grain Drills
- Feed Grinders
- Koils Grinders
- Blower Trains

EVERY wise farmer does what he can to save money, time, unnecessary hard work, and to have as pleasant a life as is possible.

Therefore, wise farmers buy International Harvester engines, engines of standard construction with features like the offset cylinder head, accurately ground piston and rings, extra large valves, detachable valve guides, split-hub fly-wheels—features that make them last by far the longest and save the most money in the end.

Be sure when you buy your engine that it is an IHC engine, and you will purchase of best material and best construction. They are made portable, stationary, or skidded; vertical or horizontal; air-or water-cooled. Sizes range from 1 to 50-H.P. They operate on both low and high grade fuels.

Not every local dealerman show you International Harvester engines. Write us for interesting catalogues and full information, and we will tell you the name of the local dealer who handles our engines.

International Harvester Company of America

(Incorporated) Harrisburg Pa.

Champion Deering McCormick Milwaukee Osborne Plass

Garden Seeds

Save The Seeds

You Can

Depend Upon

There is every dependence in the seeds we handle. That is why we have handled them so many years and this year we are carrying greater variety and a larger stock than ever, simply because our increased patronage demands it.

Garden and Flowers Seeds

in quantities to suit your wants. We have had 30 years experience in seed business, your patronage appreciated at any and all times.

Chandlers' Drug Store

West Main Street Mount Joy, Pa.

SUNDAY HOURS, 8 to 9 A. M. AND 5 to 6:45 P. M.