

# SPECIAL SALE

# OF CRAVENETTE N. H. & CO. POPLIN

We have secured from the manufacturer 1000 yards--23 shades of this widely advertised fabric to retail at a special price.

Do not mistake it for the usual poplin--in the first place, common poplins aren't "cravenetted" and rain shedding, they aren't dyed through and through, but only on the surface. That is why a dress of common poplin which is wetted, will soak up water and look dowdy and draggly, and change its color.

"Cravenette" N. H. & Co. Poplin 39c. yd., is dyed first, then sponged and "Cravenetted" so the color can't get out of the cloth.

## Commencing Wednesday, Oct. 16th

We Will Offer This Fabric at the Unheard of Price--21c a yd.

### Watch For Window Demonstration

# H. E. EBERSOLE

OPPOSITE POST OFFICE -- MOUNT JOY, PENNA.

## Guaranteed SHOES Guaranteed

We now have 32 lines of Shoes for Men, Women and Children, we will guarantee.

If they are not satisfactory we will give you a new pair or make any just claim good.

We also have the most comfortable Shoe made for tender feet. This Shoe we do not guarantee as they are made with turned soles, in order to secure for you the comfort and ease, and turned soles will not give same wear as a welt shoe. We also have this same shoe. We do guarantee in a heavy welt sole.

We are pleased with satisfaction given by wearers of our Shoes. Note some comparisons.

One customer bought a pair of Shoes elsewhere for \$1.98. He wore same for 4 months--Result, dissatisfied. Same man bought a pair of Shoes from us, same style only better quality for \$2.50--Result, satisfied. Our Shoe wore him 18 months. Now he says to his friends, buy good Shoes. They are the cheap shoes. This is the kind of Shoes we will sell you.

## S. B. Bernhart & Co.

East Main Street, Mount Joy

## GOOD FURNITURE

is the only kind I sell--Furniture that is Furniture

- Rockers Mirrors Hall Racks
- Picture Frames Ladies' Desks
- Extension & Other Tables, Davenport
- China Closets, Kitchen Cabinets

In fact anything in the Furniture Line

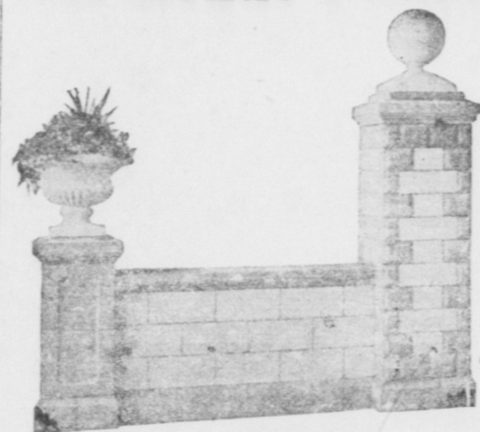
Undertaking and Embalming

## H. C. BRUNNER

MOUNT JOY, PENNA

## J. Y. KLINE

### All Kinds Concrete Work



- BUILDING BLOCKS All Styles and Colors
- Porches, Columns and Banisters
- Door and Window Sills and Lintels, Chimneys, Etc.
- Retailer of the Best Grades of Cement

FLOREN, PENNA

M. S. Hershey Buying More Land Announcement was made Wednesday that M. S. Hershey had acquired by purchase nine additional farms in Lebanon and Dauphin counties, aggregating 1,200 acres, and increasing his total holdings in these counties to 5,000 acres. The farms are located in East Hanover township, Lebanon county, and South Hanover township, Dauphin county. Mr. Hershey now owns forty-seven farms in the western part of Lebanon and the southern section of Dauphin counties. It is from these farms that Mr. Hershey at present, and to a far greater extent in the future, will receive his milk supply for the operation of the immense chocolate manufacturing plant at Hershey.

### A Log on the Track

of the fast express means serious trouble ahead if not removed, so does loss of appetite. It means lack of vitality, loss of strength and nerve weakness. If appetite fails, take Electric Bitters quickly to overcome the cause by toning up the stomach and curing the indigestion. Michael Hesselmer of Lincoln, Neb. had been sick over three years, but six bottles of Electric Bitters put him right on his feet again. They have helped thousands. They give pure blood, strong nerves, good digestion. Only 50 cents at S. B. Bernhart & Co's.

For Sale--A number of good whiskey barrels. Call at Exchange Hotel.

### TROLLEY SCHEDULE

Lancaster, Rohrerstown, Landisville, Salunga, Mt. Joy and Elizabethtown Street Railway Co.

WESTWARD

Leave Lancaster--A m. 4.30, 6.15, 8.00, 9.45, 11.30. P m. 12.15, 2.00, 3.45, 5.30, 7.15, 9.00, 10.45, 12.30.

Leave Rohrerstown--A m. 4.50, 6.35, 8.20, 10.05, 11.50. P m. 12.35, 2.20, 4.05, 5.50, 7.35, 9.20, 11.05.

Leave Landisville--A m. 5.12, 6.57, 8.42, 10.27, 12.12. P m. 12.57, 1.42, 3.27, 5.12, 6.57, 8.42, 10.27, 12.12.

Leave Salunga--A m. 5.15, 6.00, 7.00, 8.00, 9.00, 10.00, 11.00, 12.00. P m. 1.00, 2.00, 3.00, 4.00, 5.00, 6.00, 7.00, 8.00, 9.00, 10.00, 11.00, 12.00.

Leave Mount Joy--A m. 5.30, 6.15, 7.15, 8.15, 9.15, 10.15, 11.15. P m. 12.15, 1.15, 2.15, 3.15, 4.15, 5.15, 6.15, 7.15, 8.15, 9.15, 10.15, 11.15, 12.15.

Arrive at Elizabethtown--A m. 6.45, 7.45, 8.45, 9.45, 10.45, 11.45. P m. 12.45, 1.45, 2.45, 3.45, 4.45, 5.45, 6.45, 7.45, 8.45, 9.45, 10.45, 11.45, 12.45.

EASTWARD

Leave Elizabethtown--A m. 6.45, 7.45, 8.45, 9.45, 10.45, 11.45. P m. 12.45, 1.45, 2.45, 3.45, 4.45, 5.45, 6.45, 7.45, 8.45, 9.45, 10.45, 11.45, 12.45.

Leave Mount Joy--A m. 5.30x, 7.15, 8.15, 9.15, 10.15, 11.15. P m. 12.15, 1.15, 2.15, 3.15, 4.15, 5.15, 6.15, 7.15, 8.15, 9.15, 10.15, 11.15, 12.15.

Leave Salunga--A m. 5.45x, 7.30, 8.30, 9.30, 10.30, 11.30. P m. 12.30, 1.30, 2.30, 3.30, 4.30, 5.30, 6.30, 7.30, 8.30, 9.30, 10.30, 11.30, 12.30.

Leave Landisville--A m. 5.48, 7.33, 8.33, 9.33, 10.33, 11.33. P m. 12.33, 1.33, 2.33, 3.33, 4.33, 5.33, 6.33, 7.33, 8.33, 9.33, 10.33, 11.33, 12.33.

Leave Rohrerstown--A m. 6.10x, 7.55, 8.55, 9.55, 10.55, 11.55. P m. 12.55, 1.55, 2.55, 3.55, 4.55, 5.55, 6.55, 7.55, 8.55, 9.55, 10.55, 11.55, 12.55.

Arrive at Lancaster--A m. 6.30x, 8.15, 9.15, 10.15, 11.15. P m. 12.15, 1.15, 2.15, 3.15, 4.15, 5.15, 6.15, 7.15, 8.15, 9.15, 10.15, 11.15, 12.15.

On Saturdays a car will leave Lancaster at 10.15 p m; Leave Elizabethtown 11.45 p m.

On Saturdays and special occasions cars will be run between Lancaster and Mt. Joy every half hour from 6.15 a. m. to 8.15 p. m.

On days first car leaves Lancaster at 6.15 a. m. Leave Elizabethtown at 7.45 a. m. Car marked (x) connects with

Advertise in the Mt. Joy Bulletin. Read the Bulletin

## SPECIAL

## DOUBLE "J.N." Green Trading STAMPS

Given at I. D. Beneman's Saturday, Oct. 19th

Now Is The Time to Buy a Nice Warm Sweater or Jersey For Men, Women and Children

<p>See Our Elegant Assortment of</p> <h3>Children's Coats</h3> <p>At Moderate Prices.</p> <p>Never Before Have We Had Such a Nice Line of</p> <h3>Children's Dresses</h3> <p>From 50c to \$4.98</p> <p>In PERCALES, GINGHAMS, GALATEA CLOTH and WORSTEDS</p>	<h3>Infants' Caps</h3> <p>In All Styles. Some Silk, Corduroy Bear Skin and Knit</p> <p>25c to \$1.00</p>	<h3>Warm Underwear</h3> <p>For Men, Women and Children in Ribbed and Fleece Lined.</p> <h3>Blankets and Comforts</h3> <p>Are Here in All Varieties and All Prices.</p> <p>FINE ASSORTMENT OF</p> <h3>Ladies', Misses' and Children's Hats</h3> <p>TRIMMED and UNTRIMMED.</p> <h3>Corsets</h3> <p>To Fit Any Figure. American Lady, R. and G., Nemo &amp; Ferris Waists.</p> <p>Just Received a Dandy Line of</p> <h3>Men's Shirts</h3> <p>The Best You Have Ever Seen for ONE DOLLAR.</p>
<h3>Our Shoes For "Tender Feet"</h3> <p>The Best That Can be Gotten--Are Fully Guaranteed by us and also by the Manufacturer.</p> <h3>Children's School Shoes at Low Prices</h3>	<h3>Ireland Guaranteed Kid Gloves</h3> <p>For Men Women and Children In Tan, Black, Gray and Buck-skin</p> <p>—Our—</p> <h3>Boys' Suits and Overcoats</h3> <p>Are Greatly Reduced. A Large Line to Select From.</p> <p>GREAT REDUCTIONS IN</p> <h3>Men's Suits, Overcoats &amp; Raincoats</h3>	

## I. D. Beneman's Dept. Store

Opposite Union Natl. Bank. Mount Joy, Penna.