

A WOMAN'S GOOD LOOKS

Depend on her general health and freedom from pain. Many a woman looks old before her time because of those irregularities which are essentially feminine. Starting from early womanhood, she suffers from frequently recurring derangements that upset her womanly health. If she be beautiful she grows into that mellow age without wrinkles and crowfeet about the eyes or the blue circles underneath. It is invariably the rule that such women suffer little, or not at all, from womanly derangements which sap the health and leave in the face the tell-tale story of pain and suffering. Dr. R. V. Pierce, the famous specialist in the diseases of women, found a prescription in his early practice that soothed the organism peculiar to womanhood—oiled the machinery, as it were, of the human system—and helped the woman to pass those painful periods that scar-lined and aged her face. This remedy became the well-known Dr. Pierce's Favorite Prescription, that has benefited thousands of women and saved them from misery and suffering at different periods in life.



Mrs. HARKLEY E. PIERCE, of 244 Bright Street, Saratoga, Ont., writes: "I am now a well woman after suffering for three years and doctoring with several different doctors, each one saying it was something different, and the last one, after putting me through a thorough examination, said I was suffering from a growth, which, in time, would result in cancer, and said I would not live more than two years if not operated upon right away. I became hopelessly discouraged but would not consent to the operation as I was too weak and too much afraid, but at last, through the advice of a friend, I tried Dr. Pierce's medicine, and after using two bottles of the 'Favorite Prescription' I immediately felt a change. I also used two boxes of 'Healing Suppositories' and eight boxes of 'Lotion Tablets,' and can safely praise the name of Dr. Pierce's medicines to all who suffer from any female disease, for these medicines are all they are claimed to be, and I hope will help others as they have helped me."

GOOD FURNITURE

is the only kind I sell—Furniture that is Furniture

Rockers Mirrors Hall Racks
Picture Frames Ladies' Desks
Extension & Other Tables, Davenport
China Closets, Kitchen Cabinets

In fact anything in the Furniture Line

Undertaking and Embalming

H. C. BRUNNER

MOUNT JOY, PENNA.

Satisfied FARM BUYERS

If you will go to see every one of the Lancaster County people to whom I sold Lebanon Valley farms you will find that not one of them will sell at a profit of \$1000.00. Many of them have had profits offered them of over \$1000.

This is also true with all my customers from Chicago, Pittsburgh, Philadelphia, and other places.

Write me what kind of a farm you want to buy and I will send you a list by return mail, giving complete descriptions, locations, and prices. Do it now. Early buyers usually get the best bargains.

Arrangements will be made to show you the farms.

FOR SALE—7½ ACRES, with all improvements, 2 miles from Lancaster. Write for full description and price.

J. L. RUTTER

Real Estate and Insurance

Farmers Trust Building

829 Cumberland St.

LEBANON, PENNA.

Summer Shoes Reduced

At least a dollar or two less than usual; many pairs as low as half price.

See Windows for Great Bargains

Get \$2 to \$4 Oxfords for \$1 to \$2

We fit you just as carefully, as though you paid full price.

OXFORDS FOR MEN

Regular \$3.50, \$4, \$5 and \$6 now \$2.45, \$2.85 and \$4.15

Boys' \$3 Oxfords at \$1.85

SHAUB & CO.

BOOTS, SHOES, RUBBERS and HOSIERY

18 N. Queen Street, LANCASTER

PENNSYLVANIA RAILROAD

ELEVEN-DAY EXCURSION

TO

Ocean Grove Camp Meeting

Asbury Park or Long Branch

Saturday, August 24th, 1912

\$4.25 Round Trip From Mount Joy, Pa.

Tickets good going only on train leaving 12:36 P. M. Good returning on all regular trains

Covers Closing Sunday and Monday of Camp Meeting

For detail information, consult Hand Bills, or nearest Ticket Agent

The Lebanon Fair

The ever greater Lebanon Fair will be held August 27-30, and everything points to the exhibition far eclipsing all former efforts of the association. There will be four days of good racing, the program providing three events daily, with four races on the big day, Thursday, at a cost of \$5,000 in purses. Each succeeding year demonstrates the need of a substantial addition to the reservation for the agricultural exhibit, which will include the last word of the manufacturer in the scientific working of the soil, and this year will be no exception. Something new is assured in the erection of a Horticultural building in which the Pennsylvania State College will have its big educational agricultural Commission exhibit. Both will have a large corps of experts present to deliver lectures, as will also the new building. The State College exhibited will be augmented by specimens of the purest breed of cattle, sheep and swine, and the live stock exhibit will include the pick of the herds on Lebanon Valley farms.

The poultry show will again be in charge of the Lebanon Pigeon and Poultry Association, which will award ten silver cups and liberal premiums, and has secured the services of an expert, insuring fair dealing in the judging of birds.

The main Exposition building is certain to again be filled to its doors by the exhibits of local merchants and manufacturers and specimens of the product of the farm. The Midway will be bigger and better in the way of attractions than ever, and the vaudeville entertainment given on the raised platform in front of the grand stand, between the racing heats, will introduce strictly first-class talent.

See the State Chester Blight Exhibit. Lectures daily.

Interesting Features at County Fair

The rapidly growing recognition of the educational value of county and State fairs is again emphasized by the great number of exhibits and demonstrations booked for the Lancaster County Fair in October. Among others are the moving picture demonstration by the Curtis Publishing Company of the possibilities of increased comfort and advantages in farming life; the exhibit of the Health Department of Pennsylvania, especially as related to tuberculosis and the crusade for pure milk; demonstration by the American Anti-Vivisection Society advancing their particular ideas; a large exhibit by the Southern Pacific Railroad Land and Industrial Department showing the products grown along their line and the industries connected therewith; the large exhibit and demonstration of the State Chestnut Blight Commission, and the several exhibits of Pennsylvania State College on stock raising and agriculture. In addition to these special exhibits considerable interest is being manifested by the many exhibitors in the several regular departments of the fair. From present indications, the fair will greatly exceed any former exposition in Lancaster county.

WATER POWERS OF GREEN RIVER.

150,000 Theoretical Horse Power in Basin of Main Tributary of Colorado River.

The waters of Green River, the main branch of the Colorado, and its tributaries, while possessing large possibilities for the development of power, are practically unused except for irrigation. Theoretically it would be possible at the present time, according to the United States Geological Survey, by utilizing known storage sites, to develop about 1,500,000 horsepower in the basin of the Green. From Wells, Wyo., to the Wyoming State line, a distance of 225 miles, the stream has an average fall of 11 feet to the mile; and from the Wyoming State line to the mouth of Minnie Maud Creek, a distance of 200 miles, the total fall is 3,875 feet.

Notice

The meat business lately conducted by Charles K. Bennett on E. Main St., Mt. Joy, will be sold or leased. The said business has been well established for forty years, and should prove a very attractive investment either for a purchaser or lessee. Any persons interested should consult the undersigned, on the premises, or Charles H. Zeller, 53 East Main street, Mount Joy, Pa.

ETTA M. BENNETT.

The strength of a school can be measured by the work done by its Faculty. The work in the class room is the test of the school's standing. Look over the list of teachers that are engaged at Millersville and you will be impressed with their ability and understand why the Millersville State Normal School ranks among the first schools of the kind in the country.

Straws! Straws!

Any Straw Hat we have is yours for 75c and \$1.00 apiece. Getz Bros.

**EARLY MOLTING OF CHICKENS**

Western Poultryman Gives Excellent Method of Controlling Hens in Changing Feathers.

Most people believe that if they can force their hens to molt early they will lay more eggs during the season, but this is not true. Hens that have molted late will lay more eggs during the winter than the early molters.

This has been shown by the most careful experiments, but the facts are not generally known.

Molting hens require a large amount of feed containing nitrogen such as oil meal, meat and other feeds rich in protein. Molting can be forced by cutting down the feed of hens as it has been shown by experiments that scantily fed hens begin molting earlier than those on full feed, but the former do not finish molting much earlier.

Starved hens molt more uniformly than others and this is particularly noticeable in hens two or three years old.

In an experiment conducted by the Cornell experiment station it was found that on a basis of 100 hens the fed flock produced eggs to the value of \$29.97 more than by the starved flock.

The total income from all the birds was \$278 for the starved flock and \$360 for the fed flock, a difference in favor of natural molting for the year of about \$85.

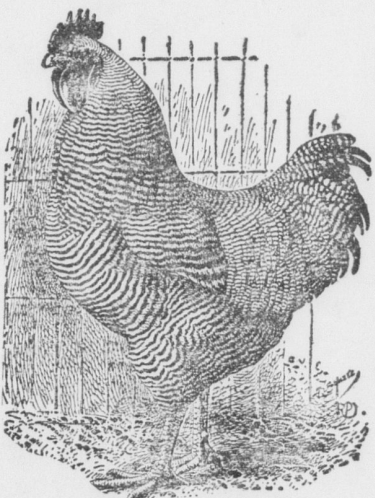
A western poultryman of long experience gives his method of controlling molting as follows:

As soon as the hens are through laying he turns them out on alfalfa, feeding them dry bran only, in addition. Under this treatment they get thin. Then he feeds them a mixed ration of grains and meat, giving a light feed in the morning and all they will eat at noon and night. Under this treatment they finish molting quickly, get new feathers and begin laying in September. By October 1 they are all in good laying condition and make a profit through the fall and winter.

PLYMOUTH ROCK IS POPULAR

Blocky Shape Makes Them Excellent Breed for Broilers—Much Favored as Utility Fowl.

The Barred Plymouth Rock is without a doubt the most popular breed of chickens in this country—more of them are found on the farms than any other breed. On special poultry farms the Leghorn is a very popular breed, and in the poultry farming districts the Rhode Island Reds are almost exclusively used, says a writer in the Rural New Yorker. As a general utility fowl the Wyandottes



Prize Winning Rock.

are second in popularity to the Rocks, the white variety being the most popular.

Their blocky shape makes them an excellent breed for broilers. Like the Plymouth Rocks and Rhode Island Reds, they lay a brown egg. The Leghorns lay a white egg, and in this respect they have a slight advantage, as most markets prefer the white egg, though there is no difference in the qualities of eggs with a brown or a white shell.

**POULTRY NOTES**

Overcrowding ducklings will induce feather-pulling.

Kerosene is sure death to lice, if applied as a spray.

Hens suffer from overeating as much as from starving.

It is provoking to have hens steal their nests this time of the year.

The feeding of onions to laying hens has produced an onion flavor in eggs.

A hen egg-bound will be seen to visit the nest repeatedly without result.

Fodder corn makes fine green food for poultry of all ages. Try it fed green.

Many will realize this fall and winter that the early-hatched chick is the winter layer.

It is not advisable to allow ducklings bathing water before the weather is warm and pleasant.

Marked at once all males not kept for breeders, and all pullets that have not kept pace with the rest of the flock.

They Won't be There

The York Fair managers announce that they hope to have Taft, Roosevelt and Wilson on hand for speeches.

New Arrivals

We received a shipment of Fall Clothing and we have them ready for your inspection. \$10.00 to \$18.00 Getz Bros.

Boys' Suits at Big Savings

School Opens In 10 Days

Better Get One and Save \$2.50

GETZ BROTHERS**SALE REGISTER**

A Notice in This List is Read by Several Thousand People Weekly

Following is a list of sales for which posters have been printed or else are advertised in this paper. These notices are given FREE until day of sale.

Wednesday, Aug. 28—At the hotel at Florin, a lot of fine cows, bulls and heifers by Sol Rosenthal, Pierce, Auct.

Friday, Aug. 30—On the premises on Mount Joy street, Mount Joy, a large lot of household goods by Mrs. Wm. Ganiz. Zeller, auct.

Saturday, Aug. 31—At the Court House, Lancaster, receivers sale of the power plant, pole lines, franchise, etc., of the Elizabethtown and Marietta Electric Light Company by Bernard J. Myers and John A. Numan, Receivers. See ad.

Tuesday, Sept. 10—On the premises in Mt. Joy township, 1 mile northeast of Rheims, a tract of 98 acres of limestone land with frame house, frame barn and outbuildings, by Jacob H. Stauffer. Zeller, auct.

Saturday, Sept. 14—In Rapho township, 70 acres of gravel and limestone land with improvements, by E. S. Metzler. Summy, auct. See ad.

Tuesday, Sept. 24—On the premises in East Donegal township, 2 miles west of Mount Joy, a tract of land containing 56 acres and 83 perches with frame house, bank barn, tobacco shed, and outbuildings by John G. Snyder and Henry G. Shelly, adms. of Elias N. Nissley, Dec'd. Minnich, auct.

Private Sale
A tract of land in East Donegal township, along the Donegal creek, near Kraybill's Church, 104 acres with stone and brick house, barn, tobacco shed and outbuildings by Henry E. Witmer.

Constipation
"For many years I was troubled, in spite of all so-called remedies I used. At last I found quick relief and cure in those mild, yet thorough and really wonderful
DR. KING'S New Life Pills
Adolph Schumacher, Buffalo, N.Y.
25 CENTS PER BOTTLE AT ALL DRUGGISTS."

GREATEST COAL MINER.

The United States Produces Two-Fifths of World's Output.

The United States has held first place among the coal-producing countries of the world since 1899, when this country supplanted Great Britain. In 1911 the total world's production of coal amounted to approximately 1,302,500,000 short tons, of which the United States contributed 496,221,168 tons, or 38.1 per cent, according to the United States Geological Survey. In the 12 years from 1899 to 1911 the production of the United States increased over 250 per cent; from 1899 to 1911 Great Britain has increased its output 50 per cent, from 198,146,731 to 304,521,195 tons. The United States in 1911 produced almost 500,000,000 tons, or 6 per cent more than Great Britain in 1911; Germany's production of coal and lignite in 1899 was 92,640,500 tons; in 1911 it was 258,223,763 tons, an increase of over 175 per cent. The combined production of Great Britain and Germany in 1911 was 562,744,958 short tons, which exceeded the output of the United States by only 66,500,000 tons, 13.2 per cent. These three countries, United States, Great Britain, and Germany, produce more than 80 per cent of the world's total supply of coal.

WILLIAMS GROVE PICNIC

Reduced Rates via Pennsylvania Railroad

For the Grangers' picnic, Williams Grove, Pa., Aug. 26 to 31, the Pennsylvania Railroad will sell excursion tickets to Williams Grove from stations in Pennsylvania and near Kraybill's Church, Elmira, Frederick and intermediate stations on Northern Central Railway, Aug. 20 to 30, inclusive, good for return passage to reach original starting point not later than September 3, at reduced rates. Aug. 14-21

Send for an illustrated catalogue if you desire to learn something of the Millersville State Normal School at Millersville. The new catalogue is a book of 146 pages filled with information of the school. Any one who examines the list of the Alumni Association published in the catalogue can form some idea of the magnitude of the work this great institution has done.

ADDITIONAL PERSONALS

Mr. and Mrs. J. A. Snyder of Strasburg, spent Sunday with Mr. and Mrs. W. D. Chandler.

William H. Schofield and family of Philadelphia, spent Thursday as the guest of William Swords.

Mrs. Edith Webb and children Matilda and James, are spending several days with the family of J. E. Webb.

Mrs. B. L. Garber, Mrs. H. N. Nissley, Misses Carrie Nissley and Esther Garber spent Saturday at Middletown.

Mr. and Mrs. B. F. Greenwalt spent Sunday at Rocky Springs, where they attended the meeting of the Christian Alliance.

Marriage Licenses

Paul S. Sload, East Donegal, and Florence L. Helsey, Mount Joy.
John W. Brosey, Rapho, and Katie B. Caslow, Mount Joy township.

The Anti-Cruelty Society says there are more cats in Chicago than human beings.

Read the Bulletin**PUBLIC SALE**

On Saturday, Sept. 14, 1912, will be offered at public sale on the premises, in Rapho township, the following prescribed Real Estate, to wit:—

A TRACT OF LIMESTONE AND GRAVEL LAND

Containing 70 Acres, more or less situated on the public road leading from the Manheim and Mt. Joy road to Union Square, about midway between Manheim and Mt. Joy, adjoining lands of B. B. Ginder, Jacob E. Becker, D. S. Metzler, A. K. Brubaker and Tobias Musser. The buildings and improvements thereon consist of a Two-Story Stone DWELLING HOUSE, with Two-Story Frame Kitchen attached, Frame Bank Barn, Carriage House with Horse Power Shed attached, Corn Barn with Tobacco Cellar, Hog Stables, Poultry House, Wood Shed and other outbuildings; a well of water and cistern with pumps therein at the house, cistern at the barn and running water between house and barn; also a number of fruit trees and grapevines in bearing order. The entire tract is farming land in a high state of cultivation. Persons wishing to view the above, before the day of sale, will be shown same by calling on the undersigned residing thereon. Sale to commence at 2 o'clock P. M. of said day when the condition will be made known by E. S. METZLER, S. G. Summy, Auct. A. G. Hamaker, Clerk.

LEINBACH & CO.**OUR CLOAK CLEARANCE**

Brings You Bigger and Better Values Than You've Ever Purchased before

A strong statement, but the big price cuts will more than bear it out. Many garments are marked a-half and some two-thirds less than the regular prices, and remember, too, that every garment is of this season's style.

\$20 to \$25 Wool Coats, Wool Suits, Wash Dresses, Silk Dresses, Lingerie Dresses, all at.....	\$9.98
\$15.00 to \$18.50 Wool and Linen Suits, Wash and Silk Dresses, Silk and Pongee Coats.....	\$7.49
\$10.50 to \$13.50 Washable and Silk Dresses, Wool Suits Wool and Washable Coats, at.....	\$5.98
\$7.00 to \$10.00 Stylish Linen Suits and pretty Washable Dresses, white and colors.....	\$3.98
\$5.00 to \$6.50 White and colored Wash Dresses and Suits; dark and light colors, at.....	\$2.49
\$3.00 to \$4.00 Washable Dresses; of many different materials; also, Linen Suits; for.....	\$1.49
\$2.00 Plain Chambray and Light Lawn and Batiste Dresses, plain and figured.....	98c

47-49 North Queen Street, Lancaster, Pa.