

JULY CLEARANCE SALE

Commences at The

Buchanan & Young Store Saturday Morning July 6

At Eight O'clock

It's An Important--Valuable--Timely Money Saving Sale

IMPORTANT--because, its every advantage you can turn to profitable account.

VALUABLE--because, it's low prices mean many valuable savings to you.

TIMELY--because the reductions are on Seasonable Merchandise. Things that you need now and will need for months to come.

From July 6th To The Month's End

This store will be turned into the greatest bargain bazaar ever seen in this section.

This great sale is going to turn the usual store methods upside-down.

Going To Break All Records

And while it does this, you personally, may reap great profit right at the time of the year when you will most appreciate it.

We Want To Call Your Attention To The

Price Lists Which Follow

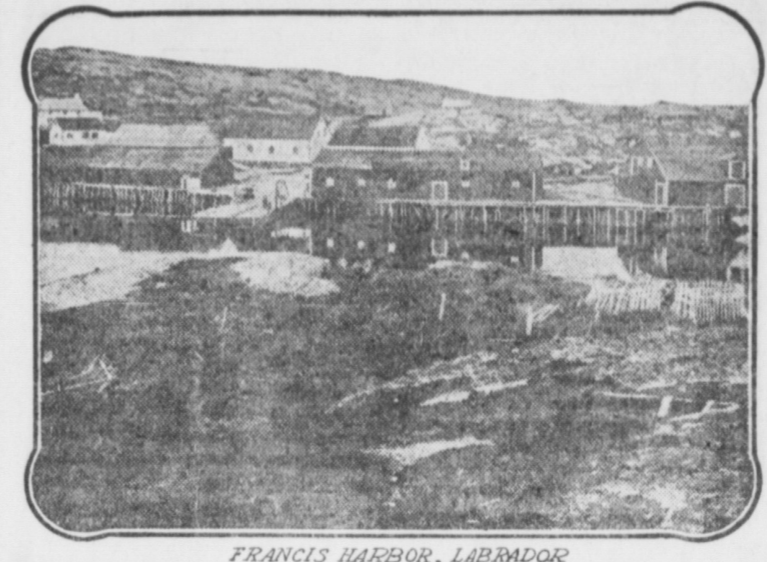
Every line is important, promising more for your expenditure than you have ever seen given by any store.

And you may be sure of one thing. We shall keep ever promise. More than that we shall exceed them.

- | | | |
|---|--|--|
| <p>BARGAIN SECTION</p> <p>\$1.00 Waists--Ladies' fine White Lawn Waists with embroidered fronts. Sale Price 25c</p> <p>39c Gowns--Good Muslin Gowns, high and low necks--trimmed. Ladies' sizes. Sale Price 25c.</p> <p>39c Corset Covers--Ladies' Corset Covers, all sizes, fine quality, lace, embroidery and ribbon trimmings. Sale Price, 25c.</p> <p>\$1.00 Waists--Ladies' fine lace trimmed Lingerie Shirt-Waists. Sale Price 48c.</p> <p>59c Gowns--Ladies' fine Summer Night Gowns--embroidered yoke, lace trimmed neck and sleeves. Sale Price, 48c.</p> <p>75c Corset Covers--Ladies' Corset Covers, very fine quality and rich trimmings of laces, embroideries and draw ribbons. Sale Price 48c.</p> <p>WASH DRESSES</p> <p>\$2.50 Wash Dresses--Ladies' Dresses of Dotted Swiss with colored figures. Sale Price \$1.48</p> <p>\$5.00 Wash Dresses--A big variety of small lots of Ladies' White and Colored Wash Dresses, values from \$2.50 to \$5.00--many sample dresses in the lot. Sale Price \$1.98.</p> <p>\$3.98 Linen Dresses--Ladies' and Misses Pure Linen Dresses in natural color, trimmed with white, a number of good styles in this lot. Sale Price \$2.39.</p> <p>\$3.98 and \$4.98 Dresses--Colored Wash Dresses in Lawns, Batiste, Linens and Gingham. Sale Price \$2.98.</p> <p>\$4.95 and \$5.95 Dresses--White and Colored Wash Dresses in the latest creations in the most becoming styles and fabrics. Sale Price \$3.88.</p> <p>\$6.50 to \$7.50 Dresses--Some very choice Wash Dresses in Ladies' and Misses sizes, white and colored lawns and linens. Sale Price \$4.98.</p> | <p>DRESS GOODS</p> <p>15c Checks--Good fast color Black and White Shepherd Checks of medium size. Sale Price, 8c.</p> <p>50c Challis--Wool Challis, 30 inches wide, cream ground with neat figures in delicate colors. Sale Price 29c.</p> <p>50c Serges--White all-wool Serge with Black pin stripe--full yard wide.</p> <p>DRESS SILKS</p> <p>50c Silks--Good quality Silk Poplins, 20 inches wide in a few good colors--Sale Price 19c.</p> <p>75c Pongee--Pongee Silk in rough and smooth weaves, 36 inches wide, colors--Natural, Tan and Jasper. Sale Price, 39c.</p> <p>39c Silks--Dress Silks 27 in. wide in Jacquards and Pongee weaves--a large and splendid line of colors. Sale Price 14c.</p> <p>50c Wash Silks--Reliable Wash Silks 20 in. wide--white grounds with colored stripes. Sale Price 25c.</p> <p>\$1.00 Mesaline--High quality yard-wide Black Satin Messa line with a splendid finish. Sale Price 58c.</p> <p>59c Foulards--Fine Satin Foulard Dress Silks--in all the fashionable ground colors in the neat figured designs--dots and stripes. Sale Price 33c.</p> <p>TABLE DAMASK</p> <p>75c Table Linen--Pure Bleached Irish Linen Table Damask, 70 inches wide, good designs. Sale Price 49c.</p> <p>35c Damask--Pure White Mercerized Table Damask, good patterns, 60 inches wide. Sale Price 29c.</p> <p>29c Damask--Fine Bleached Mercerized Table Damask, 53 inches wide, five good patterns. Sale Price 22c.</p> | <p>WASH GOODS</p> <p>12c Lawns--Fine figured Lawns--plenty of choice, light grounds. Sale Price 5c.</p> <p>15c Lawns--Fine Dress Lawns White and colored grounds with dots and figures in black and colors. Sale Price 8c.</p> <p>25c Dimities--Fine Corded Irish Dimities and Linette and cotton Volles, in stripe, check and figure designs. Sale Price 12c.</p> <p>Women's 50c Pine Gauze Pants, tight knee, Sale Price 37c.</p> <p>Women's 25c Nursing Vests, Sale Price 19c.</p> <p>Women's 10c Ribbed Vest, sleeveless, lace edge neck and arms; full size. Sale Price 7c each.</p> <p>15c Fine Ribbed Vest, Low neck, no sleeves, silk trimmed neck and arms. Sale Price 11c each.</p> <p>Women's 25c Ribbed Pants, lace knee. Sale Price 17c.</p> <p>Women's 39c Union Suits, lace knee. Sale Price 29c.</p> <p>Women's 50c Union Suits, lace knee Sale Price 39c.</p> <p>12c Satines--Dress Satines, Black and navy, with neat white figures. Sale Price, 10c.</p> <p>7c Checks--Black and White mercerized Shepherd Check Dress Cottons. Sale Price 4c.</p> <p>8c Wash Goods--mercerized Cotton Foulard Wash Goods--Black, Blue, Green and Garnet grounds with neat white figures, Sale Price 5c.</p> <p>17c Galatea--Strong Galatea Cloth in desirable colors and figures for children's wear. Sale Price 10c.</p> <p>12c Gingham--Strong Gingham for House Dresses, standard width and extra weight, neat fast color, stripes and checks. Sale Price 8c.</p> <p>12c Gingham--The Standard 12c Bates Dress Gingham, in stripes, checks and plaids. 9c.</p> |
|---|--|--|

BUCHANAN & YOUNG 115-117 N. Queen St. Lancaster Pa.,

COD FISHER EVER CALM



FRANCIS HARBOR, LABRADOR

The conditions surrounding the industry of cod fishing there is a fascination for the inlander that takes him back year after year. And most interesting of all is the fisherman himself. I am not certain, writes W. Lacey Amy in the Toronto Globe, but it really seems to be his supreme indifference to everything but the fish that makes him so attractive.

I have wandered in and out among them where they do not see a visitor in a month; I have seen them empty a boatload of shiny cod that equaled a fortnight's ordinary catch; I have watched them lift a large horse into a tiny skiff where nothing save prayer appeared to offer any hope of its reaching its destination; I have helped them carry into the steamer's hospital men sick unto death, and have had "good luck" to a patient returning from the hospital legless and helpless in life's fight; I have handed out food to the starving from the steamer's stores, and have heard them refuse to accept well paid work until the cod ran again. But I have never seen a cod fisherman excited.

The nature of the fisherman's life is strenuous enough to relieve him of the necessity of overexertion to prevent falling asleep at inopportune moments. Although it requires but a small cloud and a tiny clap of thunder to keep him from the fishing grounds, scarcely a week passes that he is not forced to meet the terrible machinations of storm and wave to compass his destruction. In his dizzily bobbing little boat he fights the sea, the most apathetic of men against the most relentless of nature's forces.

Open Waters in June.

The fact that he cannot swim seems not to throw into his struggle any sign of fear; so long as a plank holds between him and water he can weather anything that blows. In the early spring, long before the cod begin to run, he risks his life a thousand times across the treacherous ice floes in chase of the seal. In May, while the winds are still icy, he makes a few extra cents in herring off the Magdalen. A month later the Labrador fisherman may succeed in catching a few salmon if the ice is open. But when the cod run there is nothing but cod, except of late years, when the Magdaleners have taken a liking for mackerel, however scarce they be.

Around the Magdalen Islands and at Gaspe there is an interval of lobster catching that means money, but along the Labrador coast there is nothing from July until the ice forms again in October but cod, or, as they call it, "fish." The Magdalener is a motley fisherman--herring, cod, mackerel, haddock--but the Labrador fisherman lives, sleeps and smells of cod.

His home is in Newfoundland, the many quaint towns of the east coast sending out almost all their men to the north country just as soon as the ice opens a little in June. Early in that month the fishing schooners start on their long run down the coast, dodging through the ice fields, running into port in face of a storm or a threatening ice floe, and trusting more to Providence than to aught else for their safety.

It is a fearsome run, that first trek northward, staking wooden bottom against grinding, inexorable ice, and many a Newfoundland home is empty from a losing risk. But the seemingly indolent, passive fisherman is willing to take the chances to secure an early choice of fishing ground. All summer through he spends his days on the water, his evenings splitting the day's catch, and his nights in the makeshift shacks that are deemed sufficient covering for the three or four months season in that northland.

As few women now venture north, the fishermen must perform all their own work in the treatment of the fish. They are unable to leave the fishing to attend to the drying, with the result that many of them tempt the fate of a winter sail along an inhospitable, deserted coast by remaining north until the middle of November, spending the last few weeks in carefully utilizing every ray of sunshine to make the best sale for their wares. And then the light back through the ever thickening ice and increasing storms is worse than the spring run.

Oddities of Fishing Villages.

A fishing village is the quietest, ragedest spot on earth. City planning does not even reach the location of the house or the road rights. In the Magdalen Islands, where the land is more level and there is soil enough to make it a consideration, the fish houses are placed with some common regard for a roadway. The bait and tackle and other odoriferous material are kept in the lower story, and the

MEET DEMAND FOR ODD SHOES

Manufacturers and Dealers Prepared for Need, and There Is No Difficulty in the Matter.

When a one legged man buys a shoe the dealer sends to the factory for a shoe to match the one left remaining. In these days of the use of machinery in every process of their manufacture shoes are made with the utmost exactness and precision and it is easily possible to mate that remaining shoe with the greatest nicety in size, style, material and finish.

Few people have feet exactly alike. But there are people who buy shoes commonly the left foot is larger than the right, so that one shoe may fit a little more snugly than the other. Commonly, however, people buy shoes in regularly matched pairs, the difference in their feet, if it is noticeable to them at all, not being enough to me any other course desirable.

But there are people who buy shoes of different sizes or widths, in which case the dealer breaks two pairs for them, giving them, to fit their feet, one shoe from each. In such cases the dealer matches up the two remaining shoes, one from each of two pairs, just as he would where he had broken one pair to sell one shoe to a one legged man.

But a man doesn't have to be one legged or to have feet of uneven sizes or shapes to make him ask the dealer to break a pair of shoes for him. Here was a man with two perfectly good feet who came into the store where he was accustomed to buy and who wanted on this occasion one shoe. Traveling in a sleeping car his shoes had been mixed up with others and he had got back one of his own and one of some other man's; a fact which he had not discovered until he was too far away from train and station to make return and setting things right possible; and now he came in to buy one shoe to match his own.

Woman's Wit Saved Situation.

While a crowd of several hundred men and women lined the banks of the Park river, Hartford, Conn., offering futile suggestions for three hours one recent afternoon, as to how to rescue a poor little puppy that had become marooned on an ice floe, the water had frozen on his hair and he yelped piteously as he ran sniffling at the open water on all sides of his ice island. Human Society agents were attracted by the crowd and got long planks with which to bridge the water to the shore. The puppy started over it, only to fall in to the water, from which he scrambled back onto the ice floe. Then a woman who had been one of the crowd stepped forward and she ordered the men to strap two planks together and sent her own pet dog across the planks to fetch a stick which she threw onto the floe. After she had repeated this twice the lonely terrier understood and cautiously followed the other dog to shore and safety.

When he returned from Africa Col. Roosevelt should have brought back his own supply of black delegates.

The ease with which Eugene Debs gets nominated creates a suspicion that the socialist party is developing steam roller tendencies.

Some people seem to think it takes a houn' dawg to tree a Teddy Bear.

IOWA WOMAN WELL AGAIN

Freed From Shooting Pains, Spinal Weakness, Dizziness, by Lydia E. Pinkham's Vegetable Compound.



Ottumwa, Iowa. "For years I was almost a constant sufferer from female trouble in all its dreadful forms; shooting pains all over my body, sick headache, spinal weakness, dizziness, depression, and everything that was horrid. I tried many doctors in different parts of the United States, but Lydia E. Pinkham's Vegetable Compound has done more for me than all the doctors. I feel it my duty to tell you these facts. My heart is full of gratitude to Lydia E. Pinkham's Vegetable Compound for my health."--Mrs. HARRIET E. WAMPLER, 524 S. Ransom Street, Ottumwa, Iowa.

Consider Well This Advice.

No woman suffering from any form of female troubles should lose hope until she has given Lydia E. Pinkham's Vegetable Compound a fair trial.

This famous remedy, the medicinal ingredients of which are derived from native roots and herbs, has for nearly forty years proved to be a most valuable tonic and invigorator of the female organism. Women everywhere bring willing testimony to the wonderful virtue of Lydia E. Pinkham's Vegetable Compound.

If you want special advice write to Lydia E. Pinkham Medicine Co. (confidential), Lynn, Mass. Your letter will be opened, read and answered by a woman and held in strict confidence.

TROLLEY SCHEDULE

WESTWARD	
Leave Lancaster--A. M.	4.30, 5.15, 6.15, 7.15, 8.15, 9.15, 10.15, 11.15, P. M.
Leave Rohrerstown--A. M.	4.50, 5.35, 6.35, 7.35, 8.35, 9.35, 10.35, 11.35, P. M.
Leave Landisville--A. M.	5.10, 5.55, 6.55, 7.55, 8.55, 9.55, 10.55, 11.55, P. M.
Leave Salunga--A. M.	5.30, 6.15, 7.15, 8.15, 9.15, 10.15, 11.15, P. M.
Leave Mount Joy--A. M.	5.45, 6.30, 7.30, 8.30, 9.30, 10.30, 11.30, P. M.
Leave Elizabethtown--A. M.	6.00, 6.45, 7.45, 8.45, 9.45, 10.45, 11.45, P. M.
Leave Lancaster--A. M.	6.15, 7.00, 8.00, 9.00, 10.00, 11.00, P. M.
Leave Rohrerstown--A. M.	6.30, 7.15, 8.15, 9.15, 10.15, 11.15, P. M.
Leave Landisville--A. M.	6.45, 7.30, 8.30, 9.30, 10.30, 11.30, P. M.
Leave Salunga--A. M.	7.00, 7.45, 8.45, 9.45, 10.45, 11.45, P. M.
Leave Mount Joy--A. M.	7.15, 8.00, 9.00, 10.00, 11.00, P. M.
Leave Elizabethtown--A. M.	7.30, 8.15, 9.15, 10.15, 11.15, P. M.
Leave Lancaster--A. M.	7.45, 8.30, 9.30, 10.30, 11.30, P. M.
Leave Rohrerstown--A. M.	8.00, 8.45, 9.45, 10.45, 11.45, P. M.
Leave Landisville--A. M.	8.15, 9.00, 10.00, 11.00, P. M.
Leave Salunga--A. M.	8.30, 9.15, 10.15, 11.15, P. M.
Leave Mount Joy--A. M.	8.45, 9.30, 10.30, 11.30, P. M.
Leave Elizabethtown--A. M.	9.00, 9.45, 10.45, 11.45, P. M.
Leave Lancaster--A. M.	9.15, 10.00, 11.00, P. M.
Leave Rohrerstown--A. M.	9.30, 10.15, 11.15, P. M.
Leave Landisville--A. M.	9.45, 10.30, 11.30, P. M.
Leave Salunga--A. M.	10.00, 10.45, 11.45, P. M.
Leave Mount Joy--A. M.	10.15, 11.00, 12.00, P. M.
Leave Elizabethtown--A. M.	10.30, 11.15, 12.15, P. M.
Leave Lancaster--A. M.	10.45, 11.30, 12.30, P. M.
Leave Rohrerstown--A. M.	11.00, 11.45, 12.45, P. M.
Leave Landisville--A. M.	11.15, 12.00, 1.00, P. M.
Leave Salunga--A. M.	11.30, 12.15, 1.15, P. M.
Leave Mount Joy--A. M.	11.45, 12.30, 1.30, P. M.
Leave Elizabethtown--A. M.	12.00, 12.45, 1.45, P. M.
Leave Lancaster--A. M.	12.15, 1.00, 2.00, P. M.
Leave Rohrerstown--A. M.	12.30, 1.15, 2.15, P. M.
Leave Landisville--A. M.	12.45, 1.30, 2.30, P. M.
Leave Salunga--A. M.	1.00, 1.45, 2.45, P. M.
Leave Mount Joy--A. M.	1.15, 2.00, 3.00, P. M.
Leave Elizabethtown--A. M.	1.30, 2.15, 3.15, P. M.
Leave Lancaster--A. M.	1.45, 2.30, 3.30, P. M.
Leave Rohrerstown--A. M.	2.00, 2.45, 3.45, P. M.
Leave Landisville--A. M.	2.15, 3.00, 4.00, P. M.
Leave Salunga--A. M.	2.30, 3.15, 4.15, P. M.
Leave Mount Joy--A. M.	2.45, 3.30, 4.30, P. M.
Leave Elizabethtown--A. M.	3.00, 3.45, 4.45, P. M.
Leave Lancaster--A. M.	3.15, 4.00, 5.00, P. M.
Leave Rohrerstown--A. M.	3.30, 4.15, 5.15, P. M.
Leave Landisville--A. M.	3.45, 4.30, 5.30, P. M.
Leave Salunga--A. M.	4.00, 4.45, 5.45, P. M.
Leave Mount Joy--A. M.	4.15, 5.00, 6.00, P. M.
Leave Elizabethtown--A. M.	4.30, 5.15, 6.15, P. M.
Leave Lancaster--A. M.	4.45, 5.30, 6.30, P. M.
Leave Rohrerstown--A. M.	5.00, 5.45, 6.45, P. M.
Leave Landisville--A. M.	5.15, 6.00, 7.00, P. M.
Leave Salunga--A. M.	5.30, 6.15, 7.15, P. M.
Leave Mount Joy--A. M.	5.45, 6.30, 7.30, P. M.
Leave Elizabethtown--A. M.	6.00, 6.45, 7.45, P. M.
Leave Lancaster--A. M.	6.15, 7.00, 8.00, P. M.
Leave Rohrerstown--A. M.	6.30, 7.15, 8.15, P. M.
Leave Landisville--A. M.	6.45, 7.30, 8.30, P. M.
Leave Salunga--A. M.	7.00, 7.45, 8.45, P. M.
Leave Mount Joy--A. M.	7.15, 8.00, 9.00, P. M.
Leave Elizabethtown--A. M.	7.30, 8.15, 9.15, P. M.
Leave Lancaster--A. M.	7.45, 8.30, 9.30, P. M.
Leave Rohrerstown--A. M.	8.00, 8.45, 9.45, P. M.
Leave Landisville--A. M.	8.15, 9.00, 10.00, P. M.
Leave Salunga--A. M.	8.30, 9.15, 10.15, P. M.
Leave Mount Joy--A. M.	8.45, 9.30, 10.30, P. M.
Leave Elizabethtown--A. M.	9.00, 9.45, 10.45, P. M.
Leave Lancaster--A. M.	9.15, 10.00, 11.00, P. M.
Leave Rohrerstown--A. M.	9.30, 10.15, 11.15, P. M.
Leave Landisville--A. M.	9.45, 10.30, 11.30, P. M.
Leave Salunga--A. M.	10.00, 10.45, 11.45, P. M.
Leave Mount Joy--A. M.	10.15, 11.00, 12.00, P. M.
Leave Elizabethtown--A. M.	10.30, 11.15, 12.15, P. M.
Leave Lancaster--A. M.	10.45, 11.30, 12.30, P. M.
Leave Rohrerstown--A. M.	11.00, 11.45, 12.45, P. M.
Leave Landisville--A. M.	11.15, 12.00, 1.00, P. M.
Leave Salunga--A. M.	11.30, 12.15, 1.15, P. M.
Leave Mount Joy--A. M.	11.45, 12.30, 1.30, P. M.
Leave Elizabethtown--A. M.	12.00, 12.45, 1.45, P. M.
Leave Lancaster--A. M.	12.15, 1.00, 2.00, P. M.
Leave Rohrerstown--A. M.	12.30, 1.15, 2.15, P. M.
Leave Landisville--A. M.	12.45, 1.30, 2.30, P. M.
Leave Salunga--A. M.	1.00, 1.45, 2.45, P. M.
Leave Mount Joy--A. M.	1.15, 2.00, 3.00, P. M.
Leave Elizabethtown--A. M.	1.30, 2.15, 3.15, P. M.
Leave Lancaster--A. M.	1.45, 2.30, 3.30, P. M.
Leave Rohrerstown--A. M.	2.00, 2.45, 3.45, P. M.
Leave Landisville--A. M.	2.15, 3.00, 4.00, P. M.
Leave Salunga--A. M.	2.30, 3.15, 4.15, P. M.
Leave Mount Joy--A. M.	2.45, 3.30, 4.30, P. M.
Leave Elizabethtown--A. M.	3.00, 3.45, 4.45, P. M.
Leave Lancaster--A. M.	3.15, 4.00, 5.00, P. M.
Leave Rohrerstown--A. M.	3.30, 4.15, 5.15, P. M.
Leave Landisville--A. M.	3.45, 4.30, 5.30, P. M.
Leave Salunga--A. M.	4.00, 4.45, 5.45, P. M.
Leave Mount Joy--A. M.	4.15, 5.00, 6.00, P. M.
Leave Elizabethtown--A. M.	4.30, 5.15, 6.15, P. M.
Leave Lancaster--A. M.	4.45, 5.30, 6.30, P. M.
Leave Rohrerstown--A. M.	5.00, 5.45, 6.45, P. M.
Leave Landisville--A. M.	5.15, 6.00, 7.00, P. M.
Leave Salunga--A. M.	5.30, 6.15, 7.15, P. M.
Leave Mount Joy--A. M.	5.45, 6.30, 7.30, P. M.
Leave Elizabethtown--A. M.	6.00, 6.45, 7.45, P. M.
Leave Lancaster--A. M.	6.15, 7.00, 8.00, P. M.
Leave Rohrerstown--A. M.	6.30, 7.15, 8.15, P. M.
Leave Landisville--A. M.	6.45, 7.30, 8.30, P. M.
Leave Salunga--A. M.	7.00, 7.45, 8.45, P. M.
Leave Mount Joy--A. M.	7.15, 8.00, 9.00, P. M.
Leave Elizabethtown--A. M.	7.30, 8.15, 9.15, P. M.
Leave Lancaster--A. M.	7.45, 8.30, 9.30, P. M.
Leave Rohrerstown--A. M.	8.00, 8.45, 9.45, P. M.
Leave Landisville--A. M.	8.15, 9.00, 10.00, P. M.
Leave Salunga--A. M.	8.30, 9.15, 10.15, P. M.
Leave Mount Joy--A. M.	8.45, 9.30, 10.30, P. M.
Leave Elizabethtown--A. M.	9.00, 9.45, 10.45, P. M.
Leave Lancaster--A. M.	9.15, 10.00, 11.00, P. M.
Leave Rohrerstown--A. M.	9.30, 10.15, 11.15, P. M.
Leave Landisville--A. M.	9.45, 10.30, 11.30, P. M.
Leave Salunga--A. M.	10.00, 10.45, 11.45, P. M.
Leave Mount Joy--A. M.	10.15, 11.00, 12.00, P. M.
Leave Elizabethtown--A. M.	10.30, 11.15, 12.15, P. M.
Leave Lancaster--A. M.	10.45, 11.30, 12.30, P. M.
Leave Rohrerstown--A. M.	11.00, 11.45, 12.45, P. M.
Leave Landisville--A. M.	11.15, 12.00, 1.00, P. M.
Leave Salunga--A. M.	11.30, 12.15, 1.15, P. M.
Leave Mount Joy--A. M.	11.45, 12.30, 1.30, P. M.
Leave Elizabethtown--A. M.	12.00, 12.45, 1.45, P. M.
Leave Lancaster--A. M.	12.15, 1.00, 2.00, P. M.
Leave Rohrerstown--A. M.	12.30, 1.15, 2.15, P. M.
Leave Landisville--A. M.	12.45, 1.30, 2.30, P. M.
Leave Salunga--A. M.	1.00, 1.45, 2.45, P. M.
Leave Mount Joy--A. M.	1.15, 2.00, 3.00, P. M.
Leave Elizabethtown--A. M.	1.30, 2.15, 3.15, P. M.
Leave Lancaster--A. M.	1.45, 2.30, 3.30, P. M.
Leave Rohrerstown--A. M.	2.00, 2.45, 3.45, P. M.
Leave Landisville--A. M.	2.15, 3.00, 4.00, P. M.
Leave Salunga--A. M.	2.30, 3.15, 4.15, P. M.
Leave Mount Joy--A. M.	2.45, 3.30, 4.30, P. M.
Leave Elizabethtown--A. M.	3.00, 3.45, 4.45, P. M.
Leave Lancaster--A. M.	3.15, 4.00, 5.00, P. M.
Leave Rohrerstown--A. M.	3.30, 4.15, 5.15, P. M.
Leave Landisville--A. M.	3.45, 4.30, 5.30, P. M.
Leave Salunga--A. M.	4.00, 4.45, 5.45, P. M.
Leave Mount Joy--A. M.	4.15, 5.00, 6.00, P. M.
Leave Elizabethtown--A. M.	4.30, 5.15, 6.15, P. M.
Leave Lancaster--A. M.	4.45, 5.30, 6.30, P. M.
Leave Rohrerstown--A. M.	