

HAPPY THO' MARRIED?

There are unhappy married lives, but a large percentage of these unhappy homes are due to the illness of the wife, mother or daughter.

"I suffered greatly for a number of years and for the past three years was so bad that life was a misery to me."

The Medical Adviser by R. V. Pierce, M. D., Buffalo, N. Y., answers hosts of delicate questions about which every woman, single or married ought to know.

Send for receipt of 31 stamps to pay for wrapping and mailing only.

SHAUB & COMPANY YOU KNOW, OR OUGHT TO KNOW, HOW IMPORTANT IT IS TO HAVE YOUR SHOES FIT AND FEEL RIGHT

Atlantic City Cape May Wildwood, Ocean City, Anglessa, Sea Isle City, Holly Beach, Avalon, Stone Harbor, New Jersey

MR. HORSE OWNER It will pay you to read this ad carefully, then come and inspect my line of Flynets, Cooling Blankets, Lap Dusters

PATENTS TRADE-MARKS and copyrights obtained or no. D. SWIFT & CO. PATENT LAWYERS, 303 Seventh St., Washington, D. C.

C. S. MUSSER, THE BAKER Fresh Bread and Cakes Delivered through towns daily

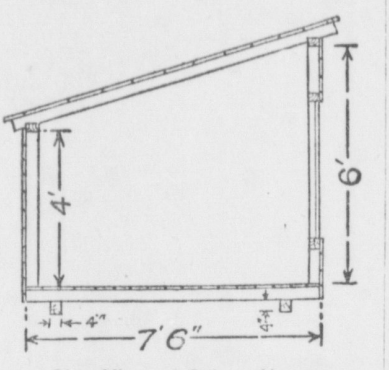
DR. J. CLEMENT JENKINS Eye, Ear, Nose and Throat 530-532 Woolworth Building Lancaster, Pa.

DR. THEEL & DR. W. L. THEEL 1719 Spring Garden St. (formerly 222 R. 6th St., Phila., Pa.)



PORTABLE COLONY HEN HOUSE Structure is Suitable for Brooding Early Chicks and May Be Used on Range in Summer.

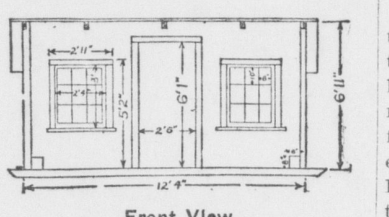
(By H. L. KEMPSTER, Michigan Experiment Station.) The illustrations show a portable colony house which has a universal use, being suited for brooding early chicks, when fitted up with indoor brooders.



Side View of Colony House.

pen for breeding hens in the early spring. The house is 7 1/2 feet by 12 feet. It is built on runners four inches square, extending lengthwise of the building.

Simplicity of construction, economy of building material, efficiency of ventilation and lighting, with due regard to location and dryness are the essential points to be considered in building a poultry plant.



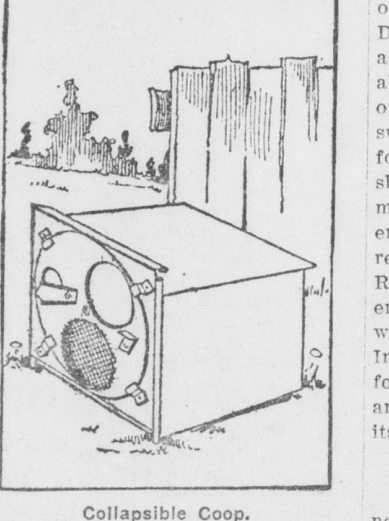
Front View.

the least possible amount of floor space. Feed boxes, hoppers, nests, etc., should have sloping tops and windows should be arranged in a way to prevent birds from roosting in objectionable places.

COOP IS MADE COLLAPSIBLE

"Knockdown" Affair, Invented by Indiana Man, Can Be Taken Apart in Few Minutes.

A sort of "knockdown" chicken coop has been designed by an Indiana man. It can be put together in a minute or taken apart and laid away in six flat surfaces in the same time.



Collapsible Coop.

ingenious features of the whole affair, however, is the front of the coop. This has a revolving circular plate pivoted to it, and in this plate are three holes—two large and one small.

Annual Reunion

(Continued from page 1) sey, Rheims; Benjamin F. Hoffman, Bainbridge; Mr. Amos Gish, Rheims.

The meeting was closed with prayer by Rev. Bossert, who had conducted the opening devotional services.

Announcement was made at the close of the meeting that Mrs. Manson, of Connecticut, had given \$300 for the purchase of a library

for the church and had taken out a life membership in Donegal Society.

At the close of the morning meeting Rev. Bossert had made an appeal for funds for the purpose.

D. A. R. SESSION

Meeting Held Under Auspices of the Lancaster and Columbia Chapters

A few minutes after 3 o'clock Miss Susan Reigart Slaymaker, regent of Donegal Chapter, D. A. R., of Lancaster, called the third meeting of the day to order.

Miss Irene McClure, regent of Witness Tree Chapter, gave the address of welcome. She referred to the many old graves in the churchyard and suggested a roll call of the persons who fill them, with suitable response.

Address by Miss Frazer The next address was given by Miss Susan C. Frazer, honorary State regent. Miss Frazer told her hearers that they could be proud of their heritage and of the church of their forefathers.

Miss Miriam Spiers, of Lancaster, then gave a charming violin solo for which she was liberally applauded.

Rev. Brown's Address

Rev. George I. Brown of Lancaster, the next speaker, opened his talk with a history of Donegal, Ireland. He pointed out the graves of men near Donegal church who came from Donegal, Ireland.

The closing address of the afternoon was given by Miss Lillian S. Evans, who was introduced as a former regent of both Donegal and Witness Tree Chapters.

ARE YOU ON OPPOSITE SIDE?

Frank Crane Thinks the "Standing Minority Report" Necessary to Keep Mankind Honest.

Doubtless each of us knows someone in his circle of acquaintances who is intellectually contrary. Such a one delights to take on every occasion the opposite side.

Prize Steers Not Good Meat

The meat of more than one prize steer has proved disappointing in the eating, though fine to look at. In the development of the animal for competition his flesh is sometimes, if not always, seamed with small veins of fat which are diluted by cooking into tough strings.

Must Have Been Her Lucky Day

In a lot of old papers and magazines that Mrs. T. G. Payson gave to the Salvation army of Jersey City the other day was an envelope containing \$225 in bills that Mrs. Payson had overlooked.

Read the Mt. Joy Bulletin.

HAVE YOU TRIED MAGIC

KLEENER

If not will you try the trial size left at your house today?

There is nothing to equal it FOR CLEANING CLOTHING of Grease or Tar Spots, Cleaning Colors on Men's or Ladies' Coats

It is soon time for house cleaning and if you want to clean the woodwork or brighten up the furniture use a little of the trial size I left you so that you will be convinced that there is nothing better

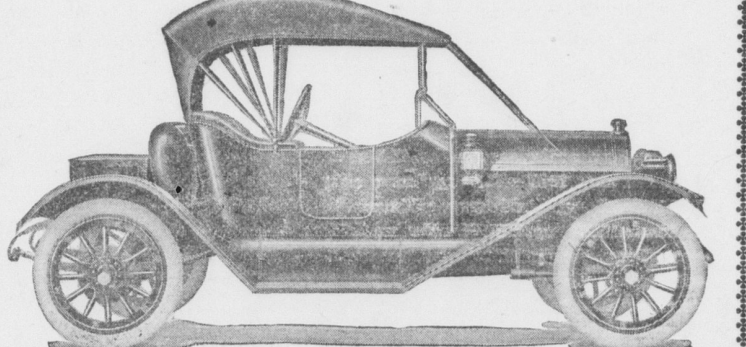
For House Cleaning We can sell any quantity you want at a very reasonable figure.

Give It a Trial

Garber's Drug Store

East Main Street, Mount Joy, Pa.

1912 Imperial Car



Imperial Model 33 Roadster \$1250 Specifications—4 5-16 by 5 1-4; 40 h. p; wheel-base 116; 34x3 1/2 demountable rims and tires, Mohair top, wind-shield; speedometer and gas tank.

Model 44 Fully Equipped \$1750 Motor, 4 1/2 by 5 1-4; wheel base, 120 inches; full floating rear axle; tires, 36 by 4. Silk Mohair Top; Wind-Shield, Speedometer and Gas Tank.

Where can you get better value for your money? Imperial cars are noted for their quiet and beautiful operation, remarkable flexibility, hill climbing capacity, simple construction, easy-riding qualities.

Imperial Cars are strictly high grade and at a medium price. Imperial Model 34, Touring Car, Five Passenger, Fully Equipped \$1400

Specifications: Motor, 4 5-16 by 5 1-4; 40 horse power; wheel base, 116 inches; tires, 34x4; demountable rims; mohair top; windshield; Speedometer and Gas Tank.

J. F. LONGENECKER General Agent, Lititz, Pa.

A Real Jewelry Store

Jewelry Stores are plenty in the general sense. But this is a jewelry store in all the special senses—not merely a little jewelry for Christmas, but for every time—for the gift givers, for the birthday, for the June bride, for the Commencement girl, for the silver, gold or diamond weddings.

S. H. MILLER, East Main Street, MOUNT JOY, PA.