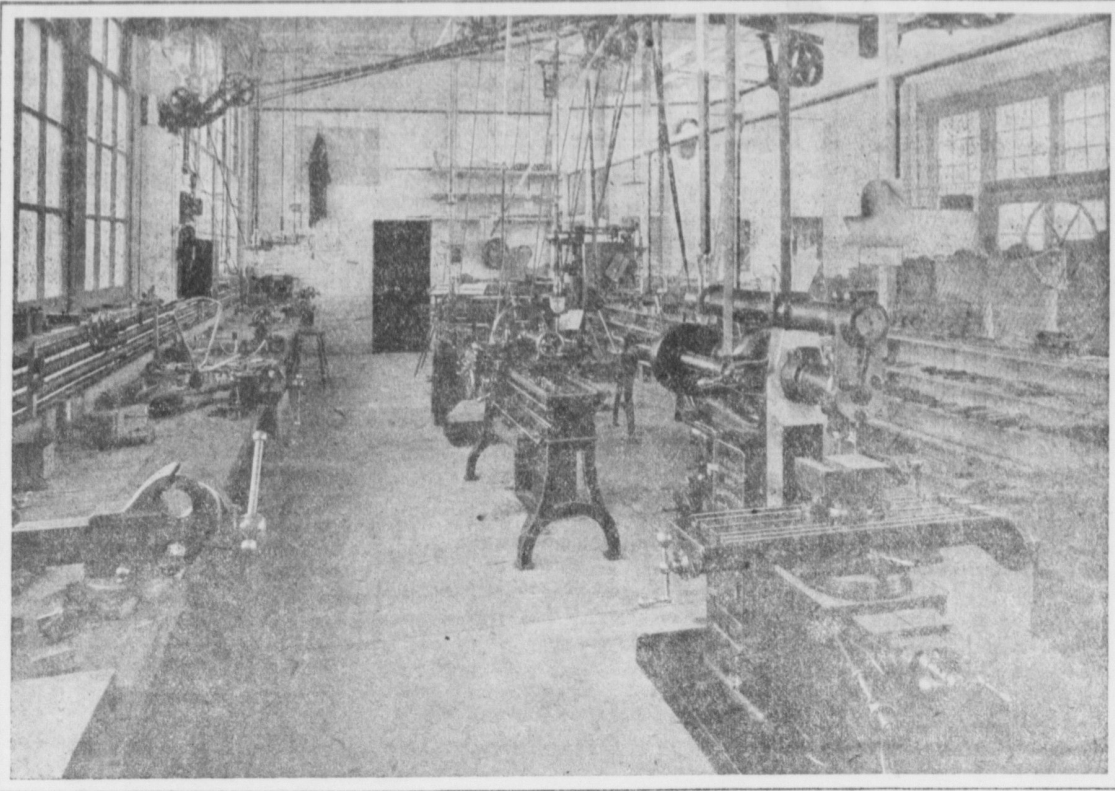


The New Standard Hardware Works



View of Tool Room—Shows Entrance to Vault.

(Continued from page 3)
dry rot.)

In the layout of the ground plan particular attention was given to the matter of the natural movement of the work through the plant, so that no back tracking would ensue. At the front of the building, to the left of the main entrance, an office 19x15 ft., is located; to the right a concrete vault, 18 ft. 7 in. by 14 ft. 8 in., is located. The vault has 8 1/2 in. concrete walls and a concrete roof, and is entered through fire-proof doors. This vault is used for the storage of patterns, small tools and various supplies. A commodious and very complete tool room, 40 by 16 ft., enclosed in expanded metal, adjoins the vault.

The tool-room equipment includes tool-room and bench lathes, a shaper, drill press, grinders, uni-

versal milling machines, etc., and in addition to making and keeping in repair the tools and jigs is also used for metal pattern making purposes. Work benches 30 in. wide, with 3 in. oak plank tops 12 in. wide, the rear portion being of maple flooring, carried on New Britain Machine Company's bench legs, extend along both sides of the building and are used for vise work, assembling and packing purposes.

At the rear of the building is located the power plant, consisting of a 15-h. p. auxiliary oil engine, which drives the line shafting through which power is furnished for the general machine tools. Auxiliary power, through 10 h. p. motors, and line shaft drive are also used in connection with various special machines, as well as the tool-room equipment. At this end of the

building, in a separate brick compartment, 21 ft. 8 in. by 7 ft. 6 in., is a tempering and hardening department, equipped with the necessary tempering and hardening furnaces, oil baths, etc.

The heating of the building is by means of low pressure steam, supplied by a 30-h. p. upright boiler. In addition to the large provisions for general lighting purposes, with individual electric incandescent lamps at the various tools.

Adequate toilet facilities are located at each end of the main building, while at convenient places wash trays for the use of the employees are provided.

The tinning plant is located in a separate building, 36 by 20 ft., adjoining the main factory building. This is fully equipped with the necessary cleaning apparatus, electric-

ally driven, also acid baths, tinning furnaces and other appliances. The tinning plant has recently been doubled in capacity due to the rapid increase of business.

In the final preparation for shipment the chopper bodies, worms and handles are assembled and inspected, after which the bearings are oiled and each part wrapped in paper and packed in an individual pasteboard box, then in wooden cases of one dozen choppers each. The different chopper disks are placed in a heavy manilla envelope, on which full instructions are given for the use of the various cutters for the class of work intended. In order to differentiate readily between sizes, a different colored label is used on boxes containing the individual choppers.

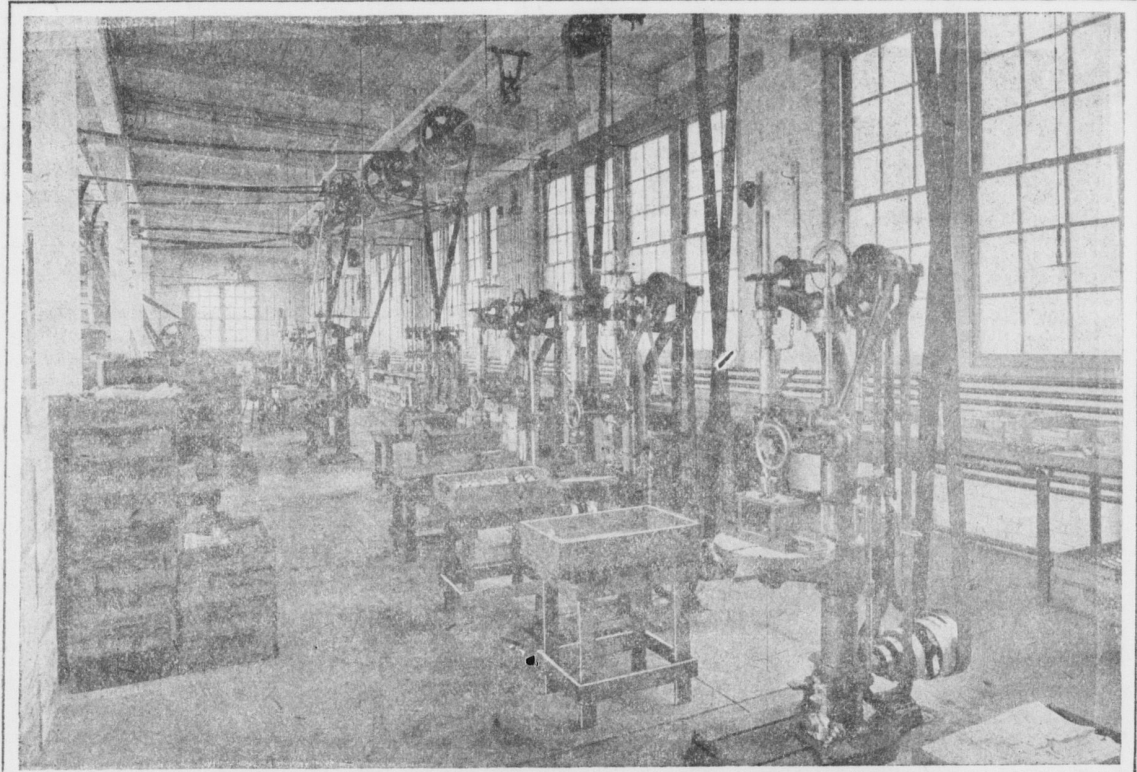
Rigid inspection, care in workmanship and complete records of work performed are enjoined on

the company's employees, at the same time their convenience is carefully considered. A reading table is provided, on which may be found for the employees use copies of the various trade journals identified with the company's line, as well as equipment used in connection with the work.

The Company's Products
The company's principal output is the New Standard line of food choppers, embracing a large variety of sizes for family use, for which the plant with its present equipment has a capacity of 10,000 choppers per month, which, however, can be increased to 25,000 per month. In addition, under the New Standard name, cherry stoners, bread knives, bottle openers and computing scales were cold handles, asbestos mats, and other goods are manufactured. The business of the Company was

started about three years ago in Simon Snyder's mill at Chickles Creek, and two years since was incorporated as the New Standard Hardware Works, with M. A. Rollman as President and Elizabeth E. Rollman as Secretary and Treasurer, and last fall Ezra E. Zercher joined the Company and is Vice President and Superintendent. In Feb. 1911, the erection of the present plant was begun and it was completed in August, and is considered one of the finest plants in Lancaster county and state.

The growth of the Company has been remarkable in spite of all obstacles that have been placed in its path since its beginning. The company already gives employment to about 40 people in its own plant besides keeping a good many molders busy at the Grey Iron Casting Co. of this borough.



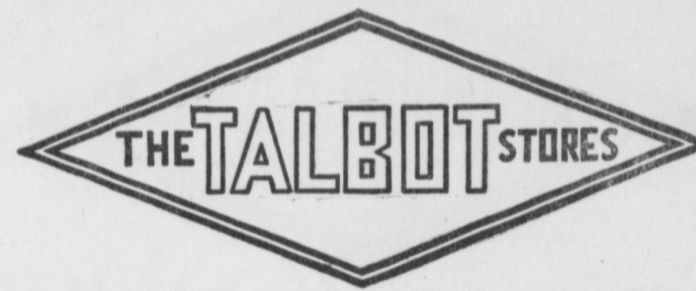
ally driven, also acid baths, tinning furnaces and other appliances. The tinning plant has recently been doubled in capacity due to the rapid increase of business.

In the final preparation for shipment the chopper bodies, worms and handles are assembled and inspected, after which the bearings are oiled and each part wrapped in paper and packed in an individual pasteboard box, then in wooden cases of one dozen choppers each. The different chopper disks are placed in a heavy manilla envelope, on which full instructions are given for the use of the various cutters for the class of work intended. In order to differentiate readily between sizes, a different colored label is used on boxes containing the individual choppers.

Rigid inspection, care in workmanship and complete records of work performed are enjoined on

the company's employees, at the same time their convenience is carefully considered. A reading table is provided, on which may be found for the employees use copies of the various trade journals identified with the company's line, as well as equipment used in connection with the work.

The growth of the Company has been remarkable in spite of all obstacles that have been placed in its path since its beginning. The company already gives employment to about 40 people in its own plant besides keeping a good many molders busy at the Grey Iron Casting Co. of this borough.



The Most Unique Institution in the State.

No doubt there are shoppers throughout the county, who on hearing of the opening of the Talbot Stores, have remarked "another store."

It is not "another store" as the term is applied. It is a new store with a new idea.

Heretofore, after you have purchased a 5c package of pins in ordinary stores, could you have spent a quiet, restful hour in a well-appointed ladies' parlor?

Or after partaking of a glass of soda water, could you have walked a few steps and listened to a FREE concert by accomplished musicians?

Or while you were buying household utensils, check your other bundles without charge, or leave your children in a glorious big playroom?

Or after purchasing some personal needfuls, attend a demonstration lecture on Cooking?

These—and scores of other conveniences—have been provided for you at the Talbot Stores, and, best of all, they are open to you whether or not a purchase has been made.

Now, what can you purchase?

25c, 50c and \$1.00
—for Home or Person

Our stock of merchandise in many instances the entire output of large factories has been secured. In the conduct of a number of stores a large volume of buying is necessary, and this means extraordinary advantages in selling, with accompanying low prices and wide-spread selection.

B. T. Babbitt Trademarks Good as Cash Here

On your way to Ye Colonial Shop (Babbitt Premium Dept.) if you see something in the Talbot Stores you want, your trademarks from Babbitt's Cleansing Products will be just as good as cash. In the Talbot Stores 10 Babbitt Trademarks equal 5c—20 Babbitt Trademarks equal 10c and so on.

THE TALBOT STORES

154-158 N. Queen St.

LANCASTER PENNA.

Additional Talbot Stores Will Soon Be Open in York, Reading, Hanover, Easton And Other Prominent Cities.

MARIETTA

A festival and bazaar will be held in the Maytown Band Hall on Thursday evening, by the ladies of the Reformed Church.

Mrs. Alice Stanfield and Flora Eyer, of Harrisburg, who were the guests of Mr. and Mrs. George Ramsey, have returned home.

Immediately after the business session of Ashara Lodge, No. 398, Free and Accepted Masons, on Monday evening they repaired to Cassel's Hall, where a banquet was served.

A May Queen Social will be held in the John Scott School house, on Thursday beginning at four o'clock in the afternoon. It is under the auspices of the Mite Missionary Society of the Bethel church. Refreshments will be served.

The Marietta Junior base ball team has organized for the season, with the following players: Paul Shields, Frank Haas, Howard Roberts, Glen Shank, Ira Wood, George Bowers, B. McFarland, John McDivitt and Donald Robers.

Dr. H. M. Alexander and Company has been notified that the head of the dog sent to the State Sanitary Board, at Philadelphia, brought to this place by E. O. Geib, of Manheim who was badly bitten had signs of rabies and all precautions should be taken. Mr. Geib, with a number of others are now under treatment at the "Pines," this place.

The Sunday School classes of the Misses Mary Rutherford and Gertrude Wagner of the Presbyterian Sunday School, held their annual picnic at Accomac, and a good time was enjoyed. The following were present: Reed Graves, Edward Graves, Ben Hiestand, Lester Stahl, Donald Comph, Vaul Stoner, Ralph Illingworth, Samuel Duppeller, and George McElroy. Among the features of the days outing was a game of base ball, and a throw for distance, which was won by Lester Stahl.

Kraybill—Young

Mr. John Kraybill a well known young farmer residing south of this place, and Miss Ella G. Young, of East Petersburg were united in the holy bonds of matrimony last Thursday by Elder A. S. Hottenstein of East Petersburg. The groom was a former dairyman of this place and has a host of friends who wish him much joy and happiness.

Subscribe for the Mt. Joy Bulletin

BUCHANAN & YOUNG

115 & 117 N. Queen St.

Lancaster, Pa.

Great June Sale of Ladies' Muslin Garments

This Store is Doing Things Better and Bigger—Improving and This June Sale of Thousand of Underpriced Garments Will be the Greatest Ever Held in This Store.

CORSET COVERS	PRINCESS SLIPS	MUSLIN GOWNS
19c Corset Covers, lace and ribbon trimmed, June Price, 12 1/2c.	Fine \$1.50 Princess Slips—two exceptionally good numbers, —lace and embroidery trimmed, June Price, 95c.	50c Muslin Gowns, high and low neck, neck embroidery trimmed, ruffle sleeves, June Price, 28c.
Corset Covers—many styles in this lot worth 25c, embroidery and lace trimmed, June Price, 15c.	Fine Princess Slips—one style with fine and the other with open work embroidery trimming and beading with wide wash ribbon draw string, June Price, \$1.25.	Fine High Grade 50c Night Gowns, high, low, square or V necks, lace and embroidery trimmings, June Price, 39c.
39c Corset Covers—elaborate trimmed styles—handsome laces, embroideries, insertions, beadings and wash ribbons, June Price 25c.	A fine \$2.00 Princess Slip trimmed with high grade embroidery, beading and ribbon, June Price, \$1.50.	69c Ladies' Gowns, made of fine Long Cloth, some choice styles: a variety of trimmings, June Price, 48c.
Ladies' fine Corset Covers, finished with embroidery, insertion, laces, and ribbon draw strings, arm holes lace trimmed, a splendid cover at 29c.	COMBINATIONS Ladies' fine Combinations—Corset Covers and Drawers—embroidery, Fine Lace and German Torchon Lace Trimmed. A special Sale offering, June Price, 48c.	75c Summer Gowns, low neck with embroidery yoke and edged with torchon lace, June Price, 59c.
50c Corset Covers—fine Nainsook and corded check dimity, with beautiful rich trimmings, June Price, 39c.	Four special combination covers—corset covers and drawers, all-over embroidery effect—and neat lace trimmed styles, June Price, 95c.	LADIES' DRAWERS 19c Muslin Drawers, with Cambric hemstitched ruffle, June Price, 12 1/2c.
FINE COVERS, 19c Big 25c value in Ladies' Corset Covers—a variety of styles trimmed in laces, insertions, embroideries and draw ribbons,—lace trimmed armholes—a big special at 19c.	Combinations, \$2.00 styles; allover embroidery and lace trimmed styles, corset cover and drawers, June Price, \$1.25. \$2.00 Combination garments, rich quality with beautiful fine lace and embroidery trimmings, June Price, \$1.50.	39c Muslin Drawers with Swiss embroidery ruffle and cluster tucks, June Price, 25c. The New Wide Drawers of fine quality, Cambric and hemstitched ruffle, June Price, 39c. 75c Drawers with rich fine lace and embroidery trimmings, the very best of styles, June Price, 48c.

Injured His Hand

While Mr. John Stehman, east of town, was motorcycling last Wednesday his machine skidded and he was thrown off, stoving his right hand severely.

Read the Mt. Joy Bulletin.

Advertise in the Mt. Joy Bulletin

Church Trustees

William B. Fink, Marietta; Samuel R. Slaymaker, of this city, and Solomon Hoover, East Donegal Presbyterian church.

For Sale—A good piano with player attachment and a lot of music at this office.

Our Home Markets.

Butter, per lb.,	28
Eggs, per doz.,	17
Lard, per lb.,	11
Potatoes, per bu.,	1.50
Wheat, per bu.,	\$1.10
Corn, per bu.,	80
Oats, per bu.,	60