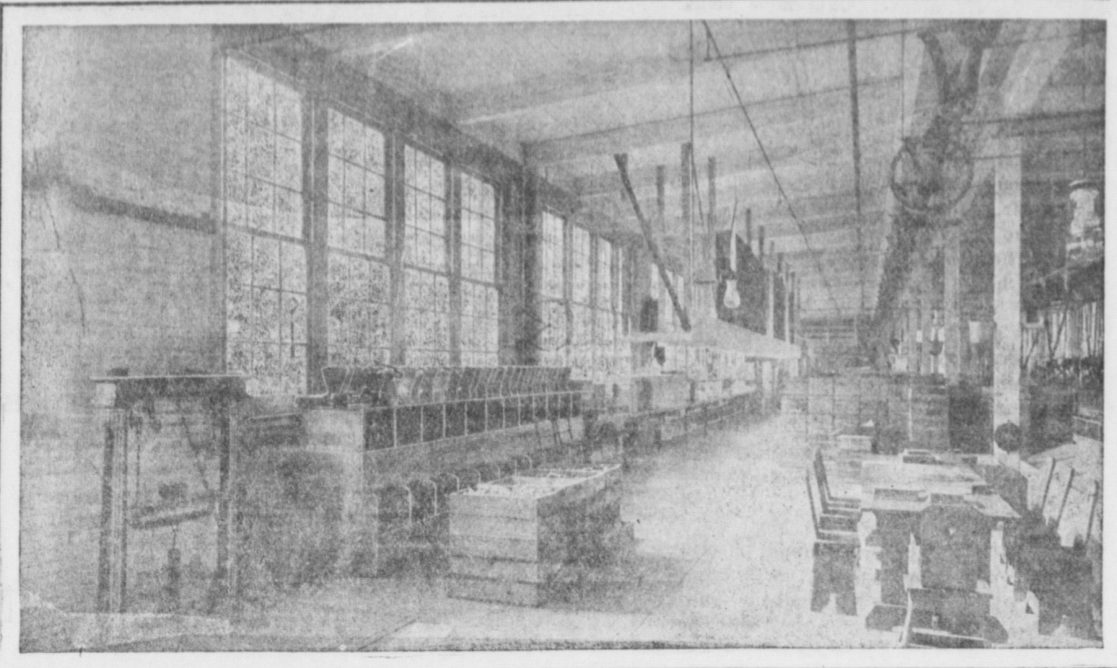
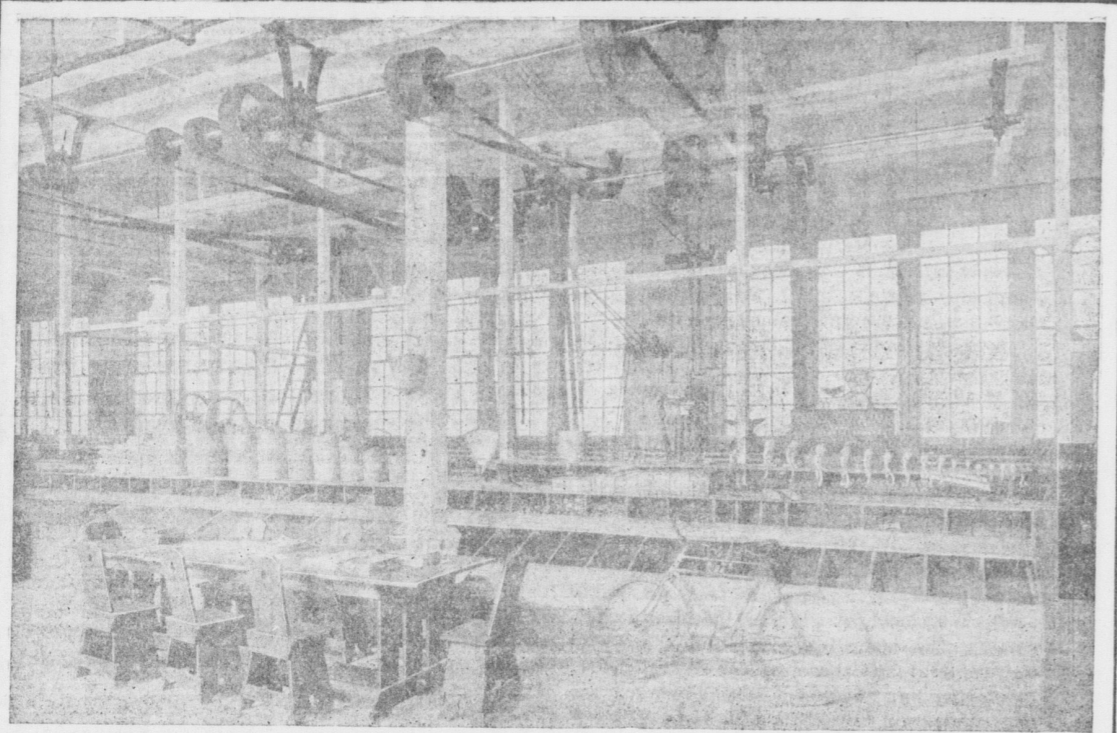


The New Standard Hardware Works



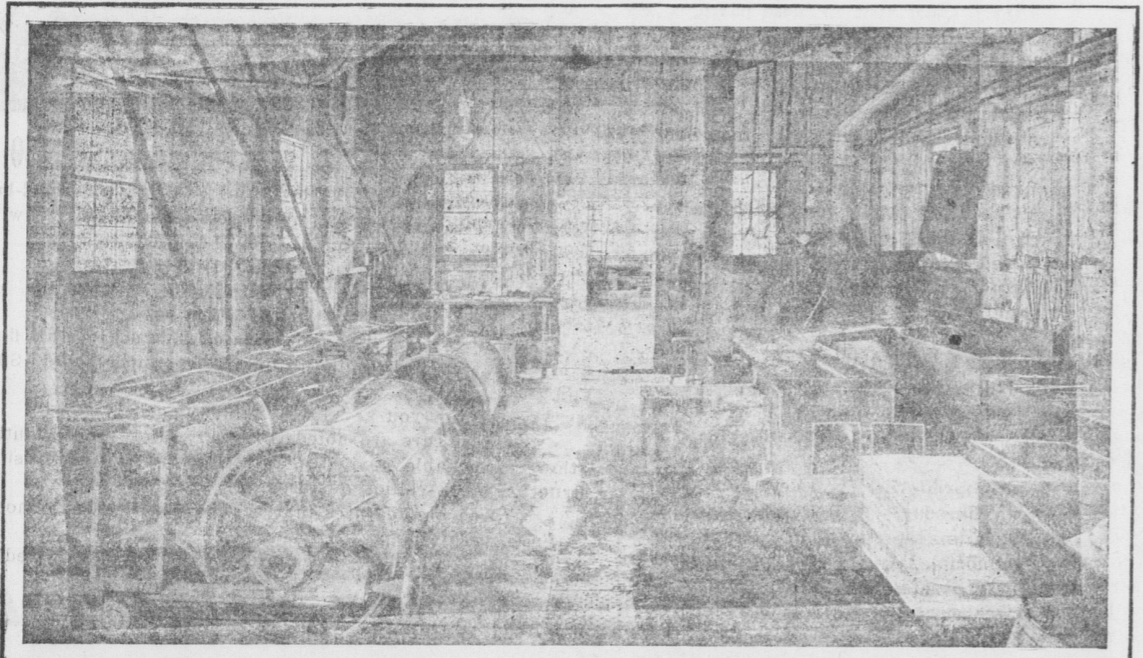
View Showing Packing and Shipping Department.

(Continued from page 1) The main building measures 200x40 ft. on the ground plan; it is one story, the inside height being 16 ft. in the clear. Brick side and end walls rise to a height of 4 ft. from the floor line, resting on stone foundations, designed for a soil pressure of 2 tons to the square foot. Brick piers, 4 ft. 10 in. wide, support the roof. These are located 20 ft. apart and between each of the windows, 15 ft. apart, on both sides of the building. These windows are of sufficient height to permit daylight to penetrate fully to the center of the building, the total area of window space being approximately 2500 sq. ft. The floor of the building is of concrete, laid on four-ply felt paper on hard soil. Four inches of concrete, following the usual top dressing, was used, except for foundations of tools and of the center columns carrying the roof, which were of a size sufficiently large for mill construction, 2-in. planks



Reading Room for Employees—View of Storage Bins, Manufacturing Equipment.

perks and similar hardware specialties. Detail as to economies in handling both the crude and finished products were carefully considered. Directness in the routing of work for employees, light and sanitary arrangements were all carefully planned. In fact every detail which would enable the company to make its product in a workmanlike and thorough manner at a minimum cost, was assigned carefully for the manufacture of food chains



Tinning House and Equipment.



Assembling, Packing and Shipping Departments.

What the B. T. Babbitt New Free Premium Idea Means to You



B. T. BABBITT BORN 1809 DECEASED 1889 CHEMIST AND SOAPMAKER

B. T. Babbitt not only invented newer and better ways of making soap, but of selling and exploiting it. He was one of the first American business men to share his profits with his customers by giving valuable premiums in exchange for the wrappers on the goods.

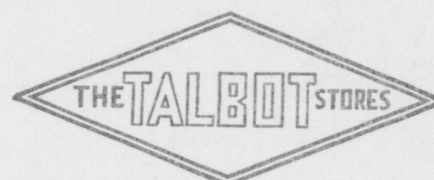
Babbitt's famous Products are: Best Soap, 1776 Washing Powder, Naptha Soap, Lye or Potash. Babbitt's Newer Products are: Babbitt's Cleanser, White Floating Soap, Naptha Soap.



In carrying out his ideals his successors have improved even his methods.

You may now Select Babbitt Premiums at Babbitt, Premium Stores in Your Own Locality

This means better choice—eyesight choice—instead of selection from a catalogue. It means that you have an immense variety from which to select at your leisure. It means that 10 BABBITT TRADEMARKS ARE NOW EQUAL TO 5c. in the Talbot Stores. 20 BABBITT TRADEMARKS EQUAL TO 10c., and so on.



are the local premium headquarters—and not only may you select the beautiful Babbitt Premiums in the Premium Shop, but anything in the Talbot Stores—merchandise, ice cream, soda, cigars—no matter what.

Thus, you see, when you insist upon getting B. T. Babbitt Products you get not only the best goods that the money can buy, but you get without cost valuable premiums—an immense selection—based on the liberal policy that says:

GIVE THE CUSTOMERS MORE FOR THE MONEY— A SHARE IN THE PROFITS—AND THE CUSTOMER WILL BE YOUR BEST ADVERTISEMENT

Save all your Babbitt wrappers. Simply cut Trademark from wrapper, or, if you do not know how, bring wrappers with you. Trademarks or wrappers should be put in packages of 10. As little as 10 Trademarks now secure a premium.

B. T. BABBITT, Inc., NEW YORK THE TALBOT STORES IN LANCASTER Are Located at 154-158 North Queen Street.

The Week in Grain

Compiled for the Mount Joy Bulletin, at Mount Joy, Pa., by Wm. L. Bear & Co., Pennsylvania Building, Philadelphia, Pa., by D. B. Lehman, Manager, Woolworth Building, Lancaster, Penna.

There has been good trading activity in both directions, with weakness predominant at the week end. Western crop advices continued pessimistic earlier, and several crop experts of experience, sent rather sensational messages. There was a suggestion of nervousness in trade circles, as to possible developments during the closing week of May, and that added to the nervous final session passed without outward incident, trading in May stuff limited to an occasional small amount thru commission houses. A short interest was apparently almost entirely lacking, with sellers confined to cash handlers for a market. This lack of support encouraged both liquidation and short selling in the distant deliveries, and weakness accentuated today, by rains thru Kansas and Nebraska. The breaking of serious drought in this direction, immediately became predominant as a factor, and a rather sharp decline featured thru the entire list, the final session of the week.

The crop making period is normally one of conflicting opinions and developments, and wide and erratic price swings. For that reason, a trader's attitude, governed by actual crop progress as distinct from daily reports, is suggested as desirable.

\$100 Reward, \$100

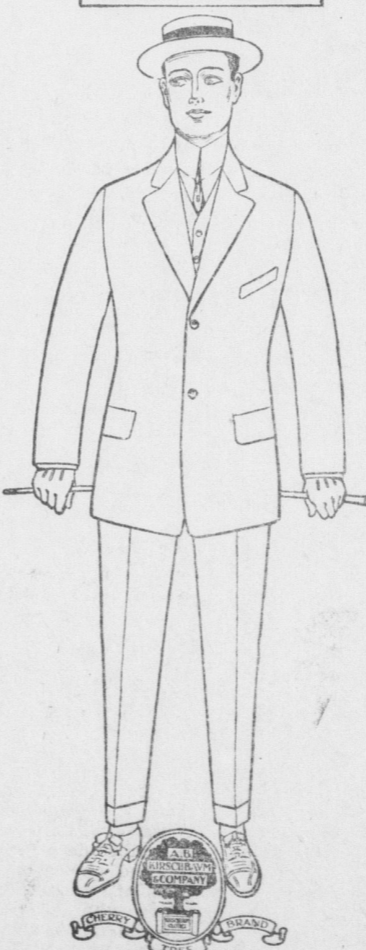
The readers of this paper will be pleased to learn that there is at least one dreaded disease that science has been able to cure in all its stages, and that is Catarrh. Hall's Catarrh Cure is the only positive cure now known to the medical fraternity, Catarrh being a constitutional disease, requires a constitutional treatment. Hall's Catarrh Cure is taken internally, acting directly upon the blood and mucous surfaces of the system, thereby destroying the foundation of the disease, and giving the patient strength by building up the constitution and assisting nature in doing its work. The proprietors have so much faith in its curative powers that they offer One Hundred Dollars for any case that it fails to cure. Send for list of testimonials. Address F. J. CHENEY & CO., Toledo, Ohio. Sold by all Druggists, 75c. Take Hall's Family Pills for constipation.

WE SELL CHEAPER BECAUSE WE GIVE S. & H. GREEN TRADING STAMPS

LEINBACH & CO. LANCASTER, PA.

FREE PHONE SERVICE JUST CALL 1100 & HAVE CHARGES REVERSED

GUARANTEED Kirschbaum Clothes. ALL WOOL. HAND-MADE.



Sale of Men's Suits Here's Your One Big Chance Genuine A. B. Kirschbaum Cherry Tree Garments At Reduced Prices

Clothes that are worn by the most particular dressers in America. Every style correct, perfect in color, weave and cut. When you buy these Kirschbaum garments, you buy the newest expression of an ideal in tailoring. You get the biggest value ever offered.

- Note the special reductions on these suits.
- The finest \$12.50 all wool at.... **\$10.00**
- The finest \$16.50 all wool at.... **\$12.50**
- The finest \$18.00 all wool at.... **\$15.00**
- \$22.50 and \$25.00 all wool at.... **\$18.75**

Come in and try these suits on. Leinbach's new Men's store, Second Floor.

WHEN IN LANCASTER, WE CORDIALLY INVITE YOU TO USE OUR REST ROOM ON THE SECOND FLOOR. BRING YOUR PARCELS HERE, WE CHECK THEM FREE.