

Entertained the Officers
Last evening the Stewards and Trustees of the Trinity U. E. Church held their business meeting at the parsonage and after their business was transacted they were very much surprised when Rev. Johnson invited them to the dining room where an elegant supper was served. The following enjoyed the supper: Messrs. Geo. Cunningham, S. F. Eshleman, Eli Williams, C. S. Gingrich, Simon Menaugh, Frank Peffer and Frank Bookman. They all enjoyed the affair immensely and hope for many more such happy occasions.

It's a poor presidential boom that doesn't help a candidate's magazine rate.

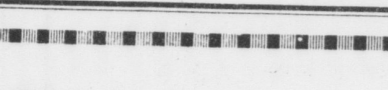


After You Are Through Experimenting With The Just-as-Good-Kind.

BUICK Locomobile AUTOCAR AND BUICK TRUCKS Sold strictly on their merits.

New 1912 Cars Now Here

Lancaster Automobile Co. 230-238 W. King St., LANCASTER PENNA.



The only strictly first class garage and repair shop in Lancaster City or County.

HARRISBURG TELEGRAPH The Central Pennsylvania Newspaper Entering Over 19,000 Homes Daily. \$3.00 a Year 6 Cents a Week

The Telegraph is printed principally for the particular people who live within a radius of fifty miles of Harrisburg; the people who want the news of their own section first and foremost, and with it first-hand accounts of events at the State Capital, with complete telegraphic news and intelligent comment on the happenings of the day.

The only complete encyclopedia of Central Pennsylvania's State and county governments, business and agricultural interests is to be found in The 1912 Year Book & Almanac

The Daily Telegraph 216 FEDERAL SQUARE HARRISBURG, PA.

THE GRAIN HOUSE OF THE EAST ESTABLISHED 1897 WILLIAM L. BEAR & CO. (Members Chicago Board of Trade) BROKERS STOCKS-BONDS-INVESTMENTS

Controller's Report

County Finances

TO THE HONORABLE THE JUDGES OF THE COURT OF COMMON PLEAS OF LANCASTER COUNTY I, H. Frank Eshleman, County Controller of Lancaster County, submit the following report of the receipts and expenditures of said County for the year ending January 1, 1912, as required by the Act of General Assembly in such case made and provided:

The following are the amounts charged against the County Treasurer: Cash on hand Jan. 2, '11 \$158,952.50

Table of financial transactions including Cash on hand, Taxes, Licenses, and various fees for 1911 and 1912.

Table of financial transactions including Discharged cases, Court cases, and Constables' returns.

Table of financial transactions including Court House repairs, Supplies, and other expenses.

Table of financial transactions including Furniture and other supplies.

Table of balance in Treasurer's hands and other assets.

Table of Assessor's Bills and other financial items.

Table of Advertising, Printing and Stationary expenses.

Table of Discharged cases and Court cases.

Table of Constables' returns and other financial items.

Table of Court House repairs and other expenses.

Table of Furniture and other supplies.

Table of other financial items and totals.

Table of Fuel, Light, Water, Postage, and other expenses.

Table of District Attorney's salary and other legal fees.

Table of Trial lists and court proceedings.

Table of Witness bills and other court expenses.

Table of Election Expenses.

Table of Computing returns and other expenses.

Table of Charitable Institutions and other expenses.

Table of other financial items and totals.

Table of Forest fires and other expenses.

Table of Roads and Streets expenses.

Table of Burials and other expenses.

Table of Commissioners' salaries and other expenses.

Table of Treasurer's Office expenses.

Table of Miscellaneous expenses.

Table of other financial items and totals.

Table of other financial items and totals.

Table of State hospital and other expenses.

Table of Sinking Fund and other financial items.

Table of Public Offices, Fees and Salaries.

Table of Recorder's Office and other expenses.

Table of Sheriff's Office and other expenses.

Table of other financial items and totals.

Table of other financial items and totals.

Table of other financial items and totals.

Table of fees and other financial items.

Table of other financial items and totals.

Table of other financial items and totals.

Table of other financial items and totals.

Table of other financial items and totals.

Table of other financial items and totals.

Table of other financial items and totals.

Table of other financial items and totals.

Advertisement for CHAS. M. STIEFF, MANUFACTURER OF Stieff, Shaw & Bennett & Bretz Pianos and Player Pianos. WHY NOT BUY YOUR PIANO DIRECT FROM THE MANUFACTURER...