

GARBER'S PHARMACY

Best Food for Babies

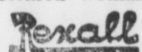
If you are having trouble with the baby's food, and nothing seems to give with it, you can probably get the child to take A. D. S. Malted Milk and thrive on it, as it is a particularly nourishing, satisfying and carefully made preparation, intended especially for troublesome etc. usachs of both infants and adults.

It is one of the standard, reliable American Druggists' Syndicate products, and its use is unhesitatingly advised by the entire 12,000 druggists who are A. D. S. members, and know its true value. There is nothing in it to prove harmful to the baby—no drugs or medicines. It is merely a scientifically made article of food, which you can rely upon. This is the way they speak of



Round Shoulders A Sign of Old Age

It is possible for every woman to have that erect, commanding, graceful appearance typical of the perfectly formed woman.



SHOULDER BRACES

Correct any tendency to become stooped-shouldered, correct deep breathing and do this without the uncomfortable sensation produced by most braces.

These Braces are constructed entirely of cloth, have no metal parts to bind, rust and break and may be worn without your knowledge except as you assume an incorrect position.

Recall Shoulder Braces, we believe to be equally beneficial for man, woman or child. All sizes—just send your chest measurement.

Price, \$1.00

A. D. S. Malted Milk

Mr. V. G. Newell, a prominent druggist of Warren, Pa. says: "Gentlemen—Enclosed you will find a picture of my youngest boy, whose LIFE WAS SAVED BY A. D. S. MALTED MILK.

"That sounds like a pretty big story, but here are the facts:

"John Winston Newell was born January 29, 1909, and after the first week his mother was unable to nurse him. He was put on a well advertised brand of malted milk, and at 5 weeks weighed only 7 1/2 pounds, was very thin and showed symptoms of starvation. Then we put him on A. D. S. Malted Milk and he began to gain at once. At 5 months, when this picture was taken, he weighed 15 pounds. We cannot recommend it too highly."

THE HUMAN BRAIN.

Scientists Claim It is Distributed All Over the Body.

Once it was believed that the gray matter of the brain was confined within the skull. Now physicians and other students of physiology tell us that this same "gray" matter is found in other parts of the body—for instance, in the tips of the fingers of the blind, where the thinking has been conscientiously exercised. One physician tells us there is little brain in the throat, and it often seems to be an independent thinking organ. An operator on the throat must become a friend and confidant of that little brain or his operation will not be successful. The little brain has a memory, and if the operator's hand has slipped and missed that throat the brain in the head may consent to the operation and desire it, but that little throat brain will resist even if it be months after the mistake, and if the operator persists the patient may be thrown into convulsions, such is the memory of that little brain.

And what has been discovered in the throat and in the finger tips will yet be discovered throughout the whole body, because we will conscientiously think in every part. At present much of the thinking is involuntary, not with the co-operation of the eye or central consciousness, but self knowledge brings you where you co-operate with yourself, and there are harmony and unity in all the activities of the body because of confidence throughout in the master of it.

The cells of your body can be seen as little selves or people, forming a government over which you exercise good rule by becoming acquainted with your people, educating public sentiment in noble thinking, putting away internal strife, hatred and other forms of inharmony. Certain persons suffer because they have hatred and despised parts and functions of their bodies. Hatred withers, paralyzes and congests. No one can do his best under disapproval—seek out a way to think kindly, generously, truly of yourself.—Detroit Free Press.

MORBID BLUSHING.

A Terrible Affliction That May Be Helped by Convex Glasses.

The essential cause of morbid blushing is a morbid temperament, says Dr. H. Campbell, M. R. C. P., in the Practitioner. A normal person may blush, but he is not greatly disturbed by it. He may be disconcerted for the time, but the storm over, he soon forgets all about it. The morbid blusher, on the other hand, suffers mental torture. The blush throws him into a state of panic such as in the normal person can only be excited by some desperate experience. The anguish is so great that he lives in constant dread of being exposed to the conditions which excite it. This dread colors his entire life. He wakes up with it; he falls asleep with it. It haunts his dreams.

Morbid blushing is, in truth, a terrible affliction. In its severe form, Dr. Campbell says, it always calls up thoughts of suicide and not infrequently actually prompts it.

The female sex is more apt to blush than the male sex, although more men than women seek medical help for morbid blushing. Those who suffer from the complaint may gain some confidence by using strong convex glasses. The artificial myopia thus induced by blurring the surroundings tends to diminish self-consciousness.

In other words, distort the faces of people by means of spectacles and it will not matter to you how they look at you, for you will not notice them.

Russia's Parquet Floors.

Most flooring put down in Russia is parquet, and it is generally oak. Even in the unpretentious houses and flat buildings this parquet is to be found. In some cases, of course, the finish is not so fine as in others, and in ordinary buildings the designs are not so elaborate. One of the most noticeable features of a Russian house is that rugs and carpets are used for wall decorations instead of floor coverings. Floor polishing by professionals, who come regularly once every week or ten days, is considered a part of the regular routine of running a house.—Detroit Free Press.

Churchyard Yew Trees.

One reason given why very old yew trees are so often found in country churchyards is that originally these trees were planted to supply the peasants with wood for their bows, for in lawless times it was soon discovered that the only place where trees would be safe from nightly marauders was the churchyard, where the most hardened thief dared not venture between darkness and dawn.—London Mail.

A Philosopher.

"My! You wanted fried potatoes, didn't you?" said the careless waitress as the customer in the restaurant finished his meal and rose to leave.

"That's all right," answered the patient man. "I've wanted so many things all my life that I didn't get 'em used to it."—Newark News.

Social Parasites.

"You needn't brag about your social connections if you do belong to an aristocratic family. Don't you work for a living?"

"I work! How do I work?"

"Everybody you can"—Baltimore American.

An Exception.

"They say that lightning never strikes twice in the same place."

"Doesn't it? I know a woman who's been married for her money three times."—Detroit Free Press.

It is to be hoped that the impressive inauguration of Dr. Sun as President of China was not restricted by police regulations forbidding the setting off of fire-crackers.

If it were not for the number of persons who fall off the water wagon there wouldn't be any room for others to get on. But there's always room.

NEWTOWN

Revival services are in progress at Ironville Church, conducted by the pastor.

There will be preaching services next Sunday at 7 p. m., in the church in this place, by the pastor.

Mr. John Mumma and children of York, spent Sunday with his parents, Mr. and Mrs. Abram Mumma.

Mr. Clifford Wittle of Lancaster, sojourned as a visitor of his parents, Mr. and Mrs. John Wittle over Sunday.

Mrs. John Wittle who has been in poor condition of health for some

time, is able to attend to her household duties again.

School Report

Report of Newtown Secondary School for the month of December: Number of scholars enrolled, male 14; female 20. Average attendance male 12; female 18. Per cent. of attendance, male 83; female 92.

ANDREW M. DIXON

Teacher Report of Newtown Primary School for December: Number of pupils enrolled, male 17; female, 15. Average attendance, male 15; female 12. Per cent. of attendance,

male 86; female 82.

MISS EDITH SPRING, Teacher

Mrs. Harry F. Eshenbaugh, Stella, wife of Harry F. Eshenbaugh, died at her home, in Elizabethtown, on Wednesday, in her twenty-fourth year. She leaves a husband and two small children to mourn her early departure. Her parents, John Hershey and wife, of Mount Joy township; several brothers and sisters and her grandfather, Emanuel Miller, of New York, also survive her. The funeral services were held on Sunday afternoon at

one o'clock at the Church of the Brethren Meeting-House, in Elizabethtown. Interment was made at the Green Tree Meeting-House.

Mr. W. S. Krady spent several days at Pittsburg, attending the P. S. Horticultural Association Meeting held in the Carnegie Library Building, from which place he was accompanied by Adolph Mueller, of Norristown. They went to Buffalo, Rochester, New York, coming home by the way of Canandaigua and Elira.

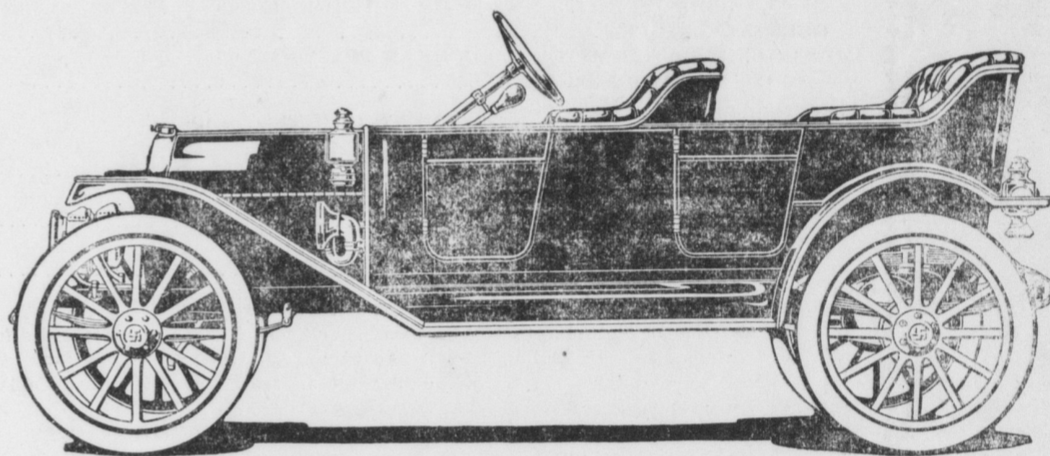
The Best Cars For The Least Money

—AT THE—

LARGEST GARAGE IN LANCASTER

PULLMAN CARS

- 4 Cylinder, 30 horse power vestibuled touring car, \$1,675, fully equipped; TRANSMISSION, three speeds forward; Wheel Base, 118 inches; TIRES, 34x4; EQUIPMENT, top, top-boot, windshield, speedometer.
- 4 cylinder, 40 horse power vestibuled five passenger touring car, \$2,150, fully equipped; TRANSMISSION, four speeds forward; WHEEL BASE, 122 inches; TIRES 36x4; EQUIPMENT, self-cranking motor, complete electric lighting equipment, demountable rims, top, top-boot, windshield, speedometer, etc.
- 4 Cylinder, 50 horse power seven passenger vestibuled touring car, \$2,700, fully equipped; TRANSMISSION, four speeds forward; WHEEL BASE, 127 inches; TIRES 36x4; EQUIPMENT, self-cranking motor, complete electric lighting equipment, top, top-boot, windshield, speedometer, etc.
- 6 Cylinder, 60 horse power seven passenger vestibuled touring car, \$2,750, fully equipped; TRANSMISSION, four speeds forward; WHEEL BASE, 138 inches; TIRES 36x4; EQUIPMENT, self-cranking motor, complete electric equipment, demountable rims, top, top-cover, windshield, speedometer, etc.



MAXWELL CARS

- Maxwell "SPECIAL"—a 36 horsepower touring car for \$1,280
- THE GLIDDEN TOUR PROVES THIS CAR.
- Maxwell "MERCURY"—a 30 horse power Roadster, built to run a mile-a-minute, for \$1,150.
- Maxwell "MASCOTT"—a 25 horse power Family Touring car \$980.
- Maxwell "MESSENGER"—a 16 horse power car, \$600 with or without doors, full equipped.

REGAL CARS—The Great Underslung Touring Cars and Roadsters.
THE OLDSMOBILE—"The Limited," "The Autocrat," "The Defender."

Call or write for catalogues to

B. FRANKLIN FUTER, 215 N. Prince St., LANCASTER.

Automobiles To Hire

Repairing Promptly Attended

Now is the time to have your car rebuilt and repainted, we make a speciality of it, tops and top-covers. All work guaranteed.

CHAS. M. STIEFF

MANUFACTURER OF

Stieff, Shaw & Bennett & Bretz

Pianos and Player Pianos

WHY NOT

BUY YOUR PIANO DIRECT FROM THE MANUFACTURER, AND SAVE THE DEALER'S PROFIT? OUR PIANOS ARE USED EXCLUSIVELY BY MORE THAN 225 CONSERVATORIES AND SCHOOLS THROUGHOUT THE UNITED STATES, WHICH MUST BE VERY CONCLUSIVE EVIDENCE OF THEIR SUPERIOR TONE, QUALITY AND DURABILITY.

WE HAVE ALL OUR PIANOS SPECIAL PRICED FROM THE FACTORY TO THE HOME, NOT ONLY ONE WEEK IN THE YEAR, BUT EVERY DAY AND WEEK THROUGH THE YEAR, AND DISTRIBUTE THEM FROM OUR OWN STORES, HAVING THREE FACTORIES AND THIRTY-SIX STORES, ALL OF WHICH ARE OWNED AND CONTROLLED BY CHAS. M. STIEFF.

CALL AT OUR LANCASTER STORE, AND LET US CONVINCING YOU THAT WE WILL SAVE YOU THE DEALER'S PROFIT.

Lancaster Store, 16 South Duke Street.

All Player Music at Half Regular Price.

E. W. GARBER

E. MAIN ST., MOUNT JOY

HARRISBURG TELEGRAPH

The Central Pennsylvania Newspaper
Entering Over 19,000 Homes Daily.
\$3.00 a Year 6 Cents a Week

The Telegraph is printed principally for the particular people who live within a radius of fifty miles of Harrisburg; the people who want the news of their own section first and foremost, and with it first-hand accounts of events at the State Capital, with complete telegraphic news and intelligent comment on the happenings of the day.

The only complete encyclopedia of Central Pennsylvania's State and county governments, business and agricultural interests is to be found in

The 1912 Year Book & Almanac

The Daily Telegraph

216 FEDERAL SQUARE

HARRISBURG, PA.

Engle's Furniture Warerooms

MOUNT JOY, PENNA.

GOOD HOMEMADE FURNITURE A SPECIALTY
UPHOLSTERING DONE TO ORDER

Popular Lumber for sale in lots to suit the purchasers

Undertaking and Embalming