

Square Pianos and Their Value

If you want a Piano and don't wish to invest much money, buy a good Second-Hand Square.

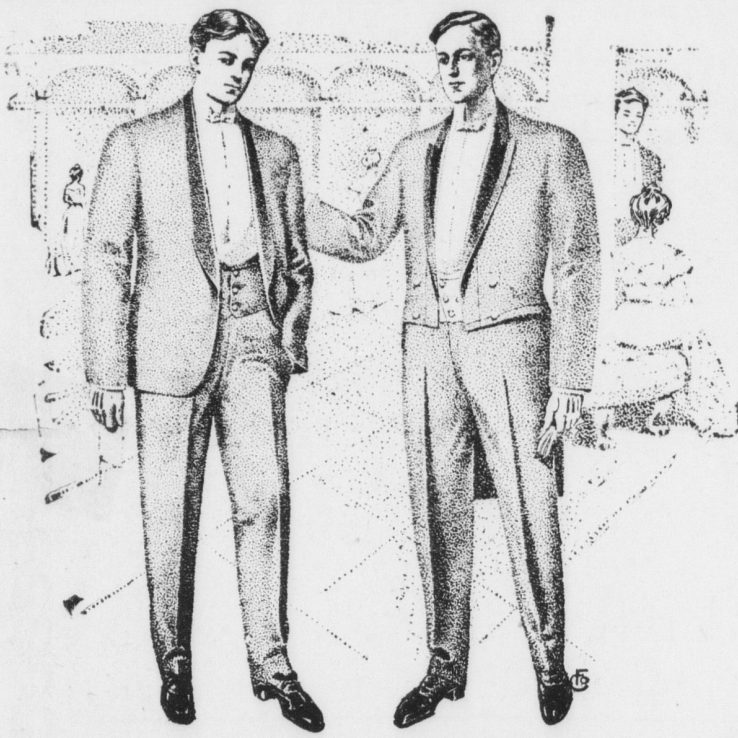
We Have Them as Low as \$25.

Guaranteed absolutely for 5 years kept in tune one year free. These pianos will outwear any cheap new piano. It's this way,—If the childreun learn to play and become good musicians, you can well afford to trade it off, later on for a good new Upright. If they don't learn to play well, you have spent enough money.

Kirk Johnson & Co.

PIANO AND ORGAN HOUSE

24 W. King St., LANCASTER, PA.



SOCIETY MEN

by reason of their eminence in social circles must necessarily be all that is perfect in matters sartorial. Their dress requirements are most exacting and are subject to the most rigid and critical inspection. Gentlemen whose social duties call for the best in the tailor's art, together with strict exactness in the matter of style propriety, would do well to look into the merits of

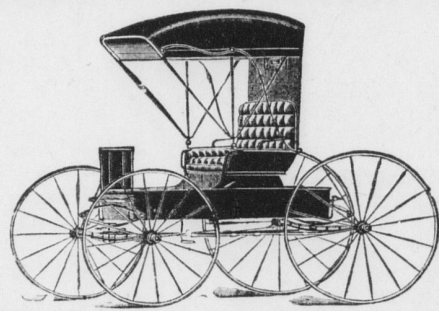
"INTERNATIONAL" GARMENTS.

They excel in all those little points, without which, quality and workmanship, avail nothing. We show their complete line and take measurements.

H. E. EBERSOLE

WEST MAIN ST., MOUNT JOY, PA.

The Rubber Tire Season



is about at hand and by all appearances the vehicle without them will be a back number this season. We put on all sizes on any vehicle and do all the work right here in our own shop. We buy our rubber direct from the manufacturer, thus saving a middle man's profit and the severest tests have proven that we buy only the best. Let us quote prices before you place your order elsewhere.

YOUNG BROS., FLORIN PENNA

Good Times Are Going To Continue

If you buy Coal of me you will certainly have a good comfortable home and after all that's where the real good times start from.

F. H. BAKER

Building Slate, Coal and Lumber
Opposite Old P. R. R. Depot, MOUNT JOY, PENNA.

PENNSYLVANIA DUTCH.

WHAT SHWILKEY BUMBLESOCK HAS TO SAY THIS WEEK.



Des is de tzeit fun yohr woo de boova un de maid graduata doona on da Colleges un Seminaries. Es hut mich shunt uft g'woonered we's comed os tzwae mit der sama amount fun larning nows in de we-ldt gaena, un aner gebt en mon feel influence un respektability un der onner gait der grebbs-gong. Ich mane ich het's om end ons g'foona. De shult is, aner hut gooter ferst-ond un der onner hut kenner. Nem en boo fun der boweri woo wase was arawet is, woo noddeerlich is, un hut larna shoffa. Shick ene in de shoof. Educate ene, don lusht on mon. Nem derno en city chap, woo in sine laeva nix g'wilt but os we si hussa ous wara uff em sitz, woo mained es ware en shont tsu shoffa, woo en hund hut so waich bow-wol un so kold os en lizzard—shick so en kolb in de college un won are rous comed lusht en galanter uz. Der arshit boogait in bisniss, won's notewennich is far en barl tookeer in der keller rolla don shpoutsed arein de hend un nembt holdt. Em onera si hend sin net fit far on ebbes hold greega. Derno larnt are de piano shubba. Are on a pawr shtieker shpeela, un ferleicht coombany shae entertaing far en owet, awver, luss mich dere sawga, de piano shubba far en yunger mon is en accomplished, un is hendich far en ornament, awver es bringt ken brodewarshit ins house.

Mit unsera maid is es feel der same wake. Era mitter hen larna shpinna, wessa, melka, un feleicht hoy-recha. Se sin g'sunt on fuft-zich yohr un kenna ivver en finrlig fense joompa. De maid sin en ornament, uns daid note mer daid se is baw-woll wickla un uff en shelf laega fun ame Somshdw; ovet tzoom onera. Era aim is en mon tsu fonga. Se kenna shaesch-wetza, (farleicht Latin) sekenna de piano shpeela os es dunnered, un shae ga-tziffer maucha far umera hemmer room, awver won se amohj g'hired sin don fint era mon glious dos even Latin un Greek un tr-gonometry un astronomy nix tsu do hut mit windla wessa un brote boeka.

Shwilkey Bumblesock

NEWTOWN.

Harry Witmer and children of New Cumberland, visited relatives in this place over Sunday.

Oscar Myers and wife of near Baltimore are on a visit to relatives in this section of the county.

Jacob Geltmacher sr., who has been afflicted with a complication of diseases, is still confined to his bed.

Preaching services were held on Sunday morning by the pastor. Services will be held again on Sunday June 21 in the evening.

Mrs. Howard Eisenberger of Kinderhook and John M. Rhoads of Donegal, were the guests of their sister Mrs. Daniel Moore on Sunday.

LANDISVILLE.

Harry Koser and wife, J. M. Trout, wife and daughter have returned from an auto trip to Philadelphia.

Rev. Peter Hershey of Dauphin county, and Miss Anna Hershey, of Philadelphia, are visiting their brother, Levi.

The auditorium on the Landisville campmeeting grounds has been remodeled. It will now seat 1,000 persons.

ELM DALE

Ephraim Shelly is quite ill. Jacob Hostetter and wife called on M. N. Stauffer Sunday.

Mr. and Mrs. J. Fissel visited D. E. Felker and wife on Sunday. The barn on Kate Stauffer's property was raised on Thursday. Mrs. Albert Stieckler and daughter Martha and Annie Walters spent Saturday with M. N. Stauffer.

Publishers & Printers

We manufacture the very highest grade of
TYPE
BRASS RULES IN STRIPS
BRASS LABOR SAVING RULE
BRASS COLUMN RULE
BRASS CIRCLES
BRASS LEADERS
BRASS ROUND CORNERS
BRASS LEADS AND SLUGS
BRASS GALLEYS
METAL BORDERS
L. S. METAL FURNITURE
LEADS AND SLUGS
METAL LEADERS
SPACES AND QUADS, 6 to 48 Point.
METAL QUAINS, ETC.
Old Column Rules refaced and made as good as new at a small cost.
Please remember that we are not in any Trust or Combination and we are sure we can make it greatly to your advantage to deal with us.
A copy of our Catalogue will be cheerfully furnished on application.

PHILADELPHIA PRINTERS' SUPPLY CO.
Manufacturers of
Type and High Grade Printing Material
PROPRIETORS
PENNY TYPE FOUNDRY,
39 North Ninth Street PHILADELPHIA.

STOP AT THE Sorrel Horse Hotel

WEST KING ST., LANCASTER
The annex now complete with the **SORREL HORSE**, makes frontage of 49, 55 and 57 West King Street. Dinner 25 cents. Best accommodations in every respect. A share of your patronage solicited.

A. B. ADAMS, Prop.

For a neat and clean shave or Hair cut go to the

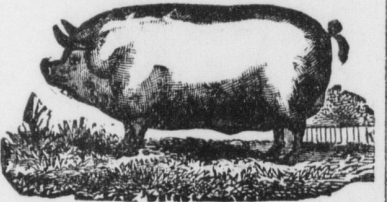
New Tonsorial Parlors

Opposite First National Bank
West Main Street, Mount Joy, Pa.
IRVIN M. BAKER, Proprietor.

Agent for the Elkhorn Steam Laundry

Shire's Meat Market

Rear of Nisley's Tobacco Warehouse
FLORIN - PENNA.
W. W. SHIRE, Propr.



Dealer in Fresh & Smoked Meats, Tallow, Lard, &c.

C. S. Musser Successor to Wm. Scholing
The Only Place to Get

Good Bread, Cakes, Buns, &c.

IS AT
Musser's Ws Eil Bakery
Mount Joy Penna

CHOICE HAMS

Let us furnish you with some Choice Ham for your dinner. It is finer than the ordinary and remember, no small picnic hams either. Must be good or I will return your money. One purchase will make you a regular customer. Don't forget that I have rented the slaughter house recently used by Mumma & Detweiler where I will do all my own killing. Always have a big supply of Beef, Pork, Sausage, Pressed and Prepared Ham, Bologna, Dried Beef, etc., &c. Call and be convinced.

H. H. KRALL

East Main St., Opposite Post Office,
MOUNT JOY, PA.

C. A. Wiley

Justice of the Peace
Conveyancer
and Scrivener

Special Attention Given to the
Collection of Rents
Your Patronage Solicited
Office:
Main Street, Florin, Penna.

ROHRERTOWN, LANDISVILLE AND MOUNT JOY STREET RY.

Leave Mount Joy (a. m.) 5:30, 7:15, 8:15, 9:15, 10:15, 11:15, 12:15, 1:15, 2:15, 3:15, 4:15, 5:15, 6:15, 7:15, 8:15, 9:15, 10:15, 11:15 a. m.
Saturday 11:15 a. m. and 12:15 p. m.
Leave Lancaster (a. m.) 4:15, 5:15, 6:15, 7:15, 8:15, 9:15, 10:15, 11:15, 12:15, 1:15, 2:15, 3:15, 4:15, 5:15, 6:15, 7:15, 8:15, 9:15, and 11:15.
Saturday 10:15, 11:15 p. m.
On Sundays first car will leave Lancaster 7:15 a. m., Leave Mount Joy 8:15 a. m., with same schedule as above.

H. Clay Miller

Electrical...
Contracting & Supplies.

Repair Work
a specialty
242 East Walnut Street
Bell Phone 145X Lancaster

Windsor Hotel

W. T. BRUBAKER, Manager.
Midway between Broad St. Station and Reading Terminal on Filbert St.
A convenient and homelike place to stay while in the city shopping.
An excellent restaurant where good service combines with low prices.
Rooms \$1.00 per day and up.
The only moderate priced hotel of reputation and consequence in
PHILADELPHIA.

THREE SPECIES OF MOOSE.

Distinguishing Features of the Animals Found in Different Parts of the World.

There are supposed to be three species of moose: The European moose, or elk, found in northern Europe and adjoining parts of Asia; the common moose of Eastern America, distinguished chiefly from its European congener by the skull being narrowed across the maxillaries, also by its greater size and darker color, and the Alaskan moose, separated by its giant stature, its narrow occiput, broad palate and heavy mandibles, writes Ernest Thompson Seton, in Scribner's Monthly.

Expressed in external features as illustrated in the adult male (always best for differentiating species): The Scandinavian elk is a small, gray animal with little palm and many spikes on its antlers. The Canadian is a large black animal with much palmation and always a separate brow of spikes. I have seen hundreds of Canadian moose antlers, but never a pair that did not show a well developed separate group of prongs in front of each brow. I have seen a score or more of Swedish elk, but never saw one that did have a separated brow group of prongs, though I confess I have seen figures of each.

The Alaskan is a richly colored black, gray and brown giant, not only the largest deer alive to-day, but believed to be the largest that ever did exist, since no fossil has been found to equal it in bulk. Its antlers differ chiefly in size from those of the Canadian moose, but Madison Grant claims that they are also more complex and have in the brow antlers a second palmation which is set at right angles to that of the main palmation. In these peculiarities he finds "a startling resemblance is shown to the extinct Cervalces, a moose-like deer of Pleistocene times, probably ancestral to the genus Alces."

If this resemblance indicates any close relationship, we have in the Alaskan moose a survivor of the archaic type from which the true moose and Scandinavian elk have somewhat degenerated.

New Varieties, a Beautiful Half-Acre of Petunias—New Forms of Old Flowers.

The newer verbenas have few leaves, a short upright stem and a truss, as the bunch of florets is called, that attains a circumference of from 12 to 15 inches. The floral florets, if the plants are properly grown, are as large as a silver quarter. Their stocky growth has made them even stronger than they were, and they bloom now from seed during a whole summer. Some of the new colors this year are "Aurora Boreale," which is a vivid scarlet, and the "Commodante Marechal," which is a blend of garnet and maroon.

One of the most beautiful exhibits every year in a garden near Berardsville is a half acre devoted wholly to various kinds of petunias. They have been planted there as freely as if they were grass seed and the ground is covered with them. They are naturally a wonderful blend of color and there is scarcely a conceivable shade in the lighter hues that is not to be found there. The petunias are single flowers, and it is easy to conceive how much more beautiful would be if the new double flower had been used instead. The doubles are exquisite crumpled balls of color, like velvet in their depth, and there are fruted petals, fringed petals and petals edged with two or three shades that contrast beautifully with the prevailing tint of the petunia. Some of the petals are crossed with different stripes of color. The shades in white are chrysanthemums, gray are sufficiently descriptive of the varieties to be had. They are amethyst, garnet, pink and crimson with green edges, pure rose pink, brilliant rosy scarlet, blended red and white, pure white, and mottled crimson and pink.

Primroses, in mauve, white and pink are nearly twice the size they were and the double poppy of the day is a ball of color as large as a peony, bearing only in its name and its brilliant scarlet hue a strong resemblance to its prototype. They are most beautiful in the solid colors, although the variegated combinations of color are popular. Lovers of the old-fashioned single poppy can still buy that in a much larger form than it used to grow. Asters are grown on the plants seen this year until they are as large as chrysanthemums. All the old-fashioned flowers, such as phlox, larkspur, sweet william and wall flowers have gained in the experiments made by the growers during the past year, and they hopefully promise more for the future.

About Plants.
It is best to wait until the plant shows it needs water, then give it a good dousing in the bathtub. A plant with its roots constantly in mud cannot thrive. If hort-house plants are watered once a week with water in which there is a little ammonia they will thrive well. Sometimes small white worms are found in the earth. Ammonia or lime water will kill them. Stir up the soil, to expose as many as possible, before pouring it on.

Accidents will happen, but, the best-regulated families keep Dr. Thomas' Electric Oil for such emergencies. It subdues the pain and heals the hurts.

Telephone your next order for job printing to 860B and get a good job at a moderate price.

ABNER M. HERSHEY AUCTIONEER

Mount Joy, Penna.

NOTARY PUBLIC.

W. M. HOLLOWBUSH

ATTORNEY-AT-LAW,
48 West Main Street, Mount Joy, Penna.

Days at Lancaster, Monday and Tuesday, at No. North Duk Street.

"Suffered day and night the torment of itching piles. Nothing helped me until I used Doan's Ointment. It cured me permanently."—Hon. John R. Garrett, Mayor, Girard, Ala.

HOTEL MCGINNIS

The undersigned having remodeled the old Mooney Hotel, adding a number of sleeping rooms, bath, etc., is now prepared to entertain transient and regular guests.

Restaurant

In connection with hotel where he will serve in season.
Oysters and Clams in every style,
Butter Soup, Deviled Crabs,
Tongue and Tripe,
Cheese and Sandwiches,
Steaks and Chops to order.
Private dining room for ladies.

J. W. McGinnis, PROPRIETOR.

CHAS. H. ZELLER

Real Estate and Insurance Office

E. MAIN STREET, MOUNT JOY

Calling and Collecting of Public Sales

Settlement of estates, collection of rents, surveying and conveyancing.

MADAME DEAN'S FRENCH FEMALE PILLS.

A Safe, Certain Remedy for Suppressed Menstruation. NEVER KNOWN TO FAIL. Sold in 25-cent and 50-cent packages. Full directions on box. Beware of cheap imitations. Will send them on trial, to be paid for when relieved. Sample Free. If you drop your name on the list, we will send you a box of the pills. UNITED MEDICAL CO., 106 N. 7th St., PHILADELPHIA, PA.

Sold in Mt. Joy by W. Garber and J. C. Goff

LOOK HERE

Have you a Photo you would like to have enlarged?

I can fill your order at once for an Enlargement of any size, from 5x7 to 40x72.

Your orders solicited.

Full Line Photographers' Supplies

W. B. BENDER Shaving Hair Cutting Shampooing

E. Main St., Mount Joy

Agency for Standard Steam Laundry

WATT & SHAND

The Great Auction Sale!

Of the Arnold Manufacturing Company was an event in the history of Auction Sales in New York, but it interests you more to know that we bought a greater variety of goods, larger quantities, and at lower prices, than at any trade sale we have ever attended.

Many of our lots were knocked down to us at fifty cents on the dollar.

We invite you to a share of the bargains, all of which are new, stylish and seasonable.

Sole Imprime, a lovely Silk waeve with superq floral designs, in tinted effects, on a white ground.

25c a Yard, Instead of 50c

Silk Mousseline, in dainty shades, pin stripes, with wee figures between.

25c a Yard, Instead of 50c

Marqu's Silks, have hem-tichel stripes, bordered with satin stripe effects and rich printings of roses and chrysanthemums.

18c a Yard in Place of 37 1-2c

Printed Dotted Silks, dots are woven on white and colored ground rich floral effects, beautifully tinted.

15c a Yard in Place of 25c

Fine Madras, of a superior quality, dainty woven figures, on white, with neat figures, or dots, in Black or Navy.

15c a Yard in Place of 25c

Sheer Irish Dimities clusters of fine woven stripes, sprinkled with dots, figures, or rings, in colors.

12 1-2 a yard, in Place of 25c

Milan Tissues, over lovely striped Muslins, with rich floral effects.

12 1-2 a yard in Place of 25c

Fine Batiste, neat floral designs, rings and dots, on a soft Muslin.

Butterick Fashions

An elegant Fashion Journal, filled with the latest and best styles of every description. Every lady should own one—25c. a copy. Each Book contains a coupon good for a 15c. pattern.

New York Store

Corner Square and E. King St., Lancaster

If You Are a Horse Owner



We want to remind you that now is the time for you to get your horse ready for the cold weather. We have the largest stock of cold weather clothing for the horse in Lancaster, and our prices are always uniform.

Horse Blankets from \$1.00 to \$9.00
Stable Blankets, from \$1.00 to \$4.50.
LAP ROBES—We have the most attractive robes in the city, made of the best materials. Our prices will surprise you, any pattern imaginable. From \$3.00 to \$25.00.

Edward Kreckel

Lancaster, Penna.

Engle's Furniture Warerooms

Mount Joy, Penna.

Good Homemade Furniture a Specialty

Upholstering Done to Order

POPULAR LUMBER FOR SALE IN LOTS TO SUIT THE PURCHASERS.

Undertaking and Embalming