

MIFFLIN PRESS, INC.
LETTERPRESS - OFFSET
 336 LOCUST STREET
 COLUMBIA, PA. 17512
 PHONE 717 684-2253

Complete Quick Copy Service



Interior of "The Study"

Unique book shop in Marietta

"The Study," a used book store on West Front Street in Marietta, is exactly what its name denotes: a study.

It occupies the two front rooms of owner Joyce Reimherr Perry's house, and is the place where she pursues her favorite activities of reading and writing. Even on weekdays, when the store is closed, Joyce is often in The Study, wielding a pen or devouring a book.

Her chief reason for opening the store in December of 1979, she says, was that she wanted to turn her home into "a very comfortable library."

Stocking the shelves was easy; she already owned a big collection of books. (Even today, only a fraction of her collection is on display for the buying public. Her attic is heaped with books. Her "personal collection" occupies a substantial area of the second floor).

This collection is continually being enlarged and improved by Joyce's mother and other book-lovers, who bring salable books to the store on consignment. Joyce's mother, a retired

English teacher, travels to bookstores the length of the East Coast, searching for suitable volumes for her daughter's store, and having a fine time in the process.

The Study contains extensive collections of old children's books, biography, and fiction: so if you're looking for a book in one of those categories, you might want to drop by the store some Sunday afternoon.

Joyce is actively collecting books on Marietta, rivers, small towns, trains, historic architecture, writing, literature, and politics. Anyone who owns a book fitting into one of these categories, who

would like to sell the book, might also profitably visit the store.

"This place is mainly for fun," says Joyce, who earns her bread as a salesman for a printing trade service company. "I enjoy meeting the customers, and I enjoy the books."

Making money is a secondary concern; in fact, after showing off two of her most valuable old books, she informs a potential customer that those particular tomes are not for sale, not at any price.

The Study is open Saturday 10 to 6, Sunday noon to 6, and evenings by chance.



Mount Joy Jaycees attend PA board meet

Six members of the Mount Joy Jaycees attended the Pennsylvania Jaycees November Board meeting recently held in Allentown. Those Jaycees attending included: Rob Stoner (also PA Jaycees Director of Sales), Rick Rossman (also District 2E Director), Kevin Ney, Ralph Spayd, Tom Konas and Alan Swanson.

The chapter and several chapter members were recognized for outstanding achievements during the months of July, August and September. Those individuals recognized included:

David Landvater, District Springboard and Spoke Winner; Dave Dumeyer, District Outstanding Board Member; Tom Konas, Dis-

trict Jaycee of the Month for August; Kevin Ney, Mid-Year Regional Spark Plug Winner; and Tom Konas, Runner-up in Regional Spoke Competition.

Chapter awards included: Outstanding Chapter in the District for the 2nd Quarter; Third Place Chapter in Region 2 for the 2nd Quarter and Fourth Place in the Region for the Year-to-Date; and the Mount Joy Jaycees were recognized for the Outstanding Faith-in-God program in the State for the First Six Months. Chaplin Rob Stoner accepted the award.

Any young man between the ages of 18 and 35 can be a member of the Jaycees. If you are interested, call Alan Swanson at 653-2688.

LACI honors family farms and farmers

Several area farmers were honored last Thursday evening at the 1980 Agriculture-Industry Banquet sponsored by the Lancaster Association of Commerce and Industry.

The awards were given to families who worked a particular farm for at least 100 years.

Irwin and Grace Engle, RD1 Marietta, have 110 acres of the original 203-acre farm operated by Jacob Engle in 1802. The Engles grow hay and corn and raise 114 dairy cows and 212 heifers.

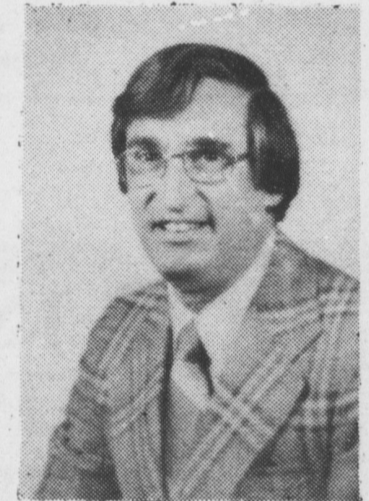
Although many new structures have been added to the farm, all of the old buildings remain intact. The farm may continue in the Engle family for an eighth generation, for Engle's seven-year-old daughter loves to work with the livestock.

Samuel B. Nissley began farming south of Mount Joy in 1822, and now, seven generations later, part of the farm is still operated by his descendant, Gerald N. Erb and his wife Judith.

Erb operates a 100-Holstein dairy and works 86 acres of the original farm. Erb, who has two children, is not optimistic that the farm will continue in the same family for many more generations. He cites the high cost of maintaining a farm operation as the reason for his point of view.

Savings from Nationwide Your home may qualify for important insurance discounts.

- If your home was built in the last seven years, Nationwide has good news for you. We now have discounts of 2% to 14% on homeowners insurance premiums.
- Current policyholders who qualify will automatically get the same discounts at renewal time.
- And whether your home is new or old, we have a discount for you if you have an approved smoke detector or burglar alarm system.
- Call your Nationwide agent for details today.
- Discounts available in most states.



JACK TYNDALL
 805 Church Street
 Mount Joy, PA
 Phone 653-5970

NATIONWIDE INSURANCE
 Nationwide is on your side
 Nationwide Mutual Insurance Company
 Nationwide Mutual Fire Insurance Company
 Home office: Columbus, Ohio

SHOPPER'S DREAM SOURCE MARVELOUS GIFT ITEMS FROM ALL OVER THE WORLD

Wholesale PRODUCT CATALOG 81-A

Sam's & Frey's Gifts
 90 East Main St.
 Mount Joy, PA 17552

Here are wonderfully appropriate gifts for clients, business associates, staff emmbers, personal friends, and family . . . everyone and anyone you value . . . men and women.

We specialize in personal service, and you may expect from us the kind of attention and concern that you receive in the finest stores.

Send: \$2.00 for lavishly-produced color catalog or stop in and see us at 90 East Main Street, Mount Joy, PA 17552.

Come in and see our **Explosion Bags** along with **Canvas Totes** **Stocking Stuffers** **Christmas Cards** **Calico Purse Accessories**

THE ROSEMARY SHOP
 17 east market st., marietta, penna.
 phone 426-1126