

The Theodore Darling house will be on the Bainbridge-Maytown Candlelight Tour this coming Sunday. Drawings by Floyd Runkle.

Columbia Little Theatre

presents

HELLO, DOLLY!

Sept. 25 to Oct. 4

8 pm except Sept. 27
(Sunday 2 pm matinee)

Adult: \$4.00
Students & Senior Citizens: \$3.00

STATE THEATRE BUILDING

421 Locust Street, Columbia
684-2273 for Box Office Information

Box Office Monday through Friday, 6 to 8
Saturday, 9 to 4

Bainbridge-Maytown Candlelight Tour this Sunday

The second annual Bainbridge-Maytown Candlelight Tour will be held on Sunday, September 28, from 2 to 7 pm. This year's tour, which is co-sponsored by the Haldeman Mansion Preservation Society and the Bainbridge-Maytown Rotary Club, will include stops at four private home, two historic mansions, a vineyard, blacksmith shop, cabinet shop, private gardens, and two churches.

At historic Haldeman Mansion, a variety of arts and crafts will be on display. Artisans will be demonstrating such crafts as basket weaving, candle making, calligraphy and fracturing, quilting, wood carving, natural wreaths, tinsmithing, scherenschnitte, and reverse painting on glass. Also featured will be needlepoint, quilting, doll dressing, water colors, tinsel painting, toleware, photography, spinning and weaving. Blacksmithing will be done at the blacksmith shop in Bainbridge.

Other special features include wine tasting at the winery, as well as a string ensemble performing Nineteenth Century music and light refreshments at the Haldeman Mansion.

A brochure describing the tour sites and including a map locating the stops will be distributed the day of the tour. Tickets, at \$3 per person, will be available at all tour sites (except the two churches), or earlier from any member of the sponsoring groups. For easy identification, a basket of yellow chrysanthemums will mark each site.

Sites to be included on the tour are as follows:

The Haldeman Mansion at Locust Grove, Locust Grove Road, Bainbridge, is architecturally and historically significant. Built over the period c. 1738 to 1811, it is listed on the National Register of Historic Places and Sites. Birthplace of eminent naturalist Professor Samuel Stehman Haldeman (1812-1880), the mansion exterior and summer kitchen/smokehouse have been restored. A variety of crafts will be demonstrated at this stop. It will also serve as a rest stop.

The Old Blacksmith Shop on Second Street, Bainbridge, painstakingly restored to its original condition by Richard W. Brooks and his son Wayne, dates to the late 1700s. This rare example of early Americana contains the original tools and parts including the bellows, forge, colonial anvil, hammers and forging tools. A number of local antiques are on display. Featured here is the art of blacksmithing.

Ludwig United Methodist Church, Race Street, Bainbridge. The original church was organized and built in 1827. In 1844 a new one story frame building was constructed on the present site with a second story being added in 1882. A fire in 1896 necessitated construction of the present brick church. All architecture is typical of the period. The church will serve as a rest stop.

Hawthorn's Cabinet Shop lets you step back in six generations of history at Hawthorn's Furniture and Interiors. See a journeyman cabinet maker ply his trade with restored antique tools

and machines of the Nineteenth Century. See handcrafted furniture and reproduction furniture of a quality that would be fitting to grace the finest and most beautiful of home. Hawthorn's has been in business since 1820.

Hackberry Hill on the Maytown-Bainbridge Road, Bainbridge, is the home of Drs. Irwin and M. Susan Richman and the Rev. and Mrs. E.O. Steigerwalt. The terraced gardens are of primary interest, each having a personality of its own.

Winery of Nissley Vineyards on the Maytown-Bainbridge Road, Bainbridge. Inspired by a nearby 18th Century stone mill and its companion stone-arch bridge, architect Clifford Coleman designed the main building. Although the winery has a traditional look, the wine-making equipment

is of modern design. The construction of the winery by J. Richard Nissley and his son, John, was started in 1976 and completed in 1978. Taste as you tour.

James Leonard House on the Maytown-Bainbridge Road, Bainbridge. The front half of this period brick farm house was built around 1800. It is believed that the remainder of the first floor and the second floor were added around 1830. The dining room is furnished almost entirely with Early American Antiques, including a pierced tin pie safe (1830) and a large jelly cupboard with its original red milk paint (1820).

Barry E. Haverstick House on the Maytown-Bainbridge Road, Bainbridge. This 2½ story brick farm house was built in 1845 by Jacob and Barbara Zeigler. It is presently in the

process of being restored. It has eight rooms, center hall, open stairway and many other features typical of this period. A separate summer house with a walk-in fireplace is situated next to the main house.

Adam H. Greer House, East High Street, Maytown. This gracious home was built about 1780. It is thought to have been built by Samuel Cook, who made provisions that all his slaves would be set free on their 24th birthdays. Some of the original features include 24 inch walls, two fireplaces, chair rails and inside strap hinges. The Victorian Era additions included the Ionic design front porch, the stained glass (leaded) window in transom and at the first of a double landing staircase.

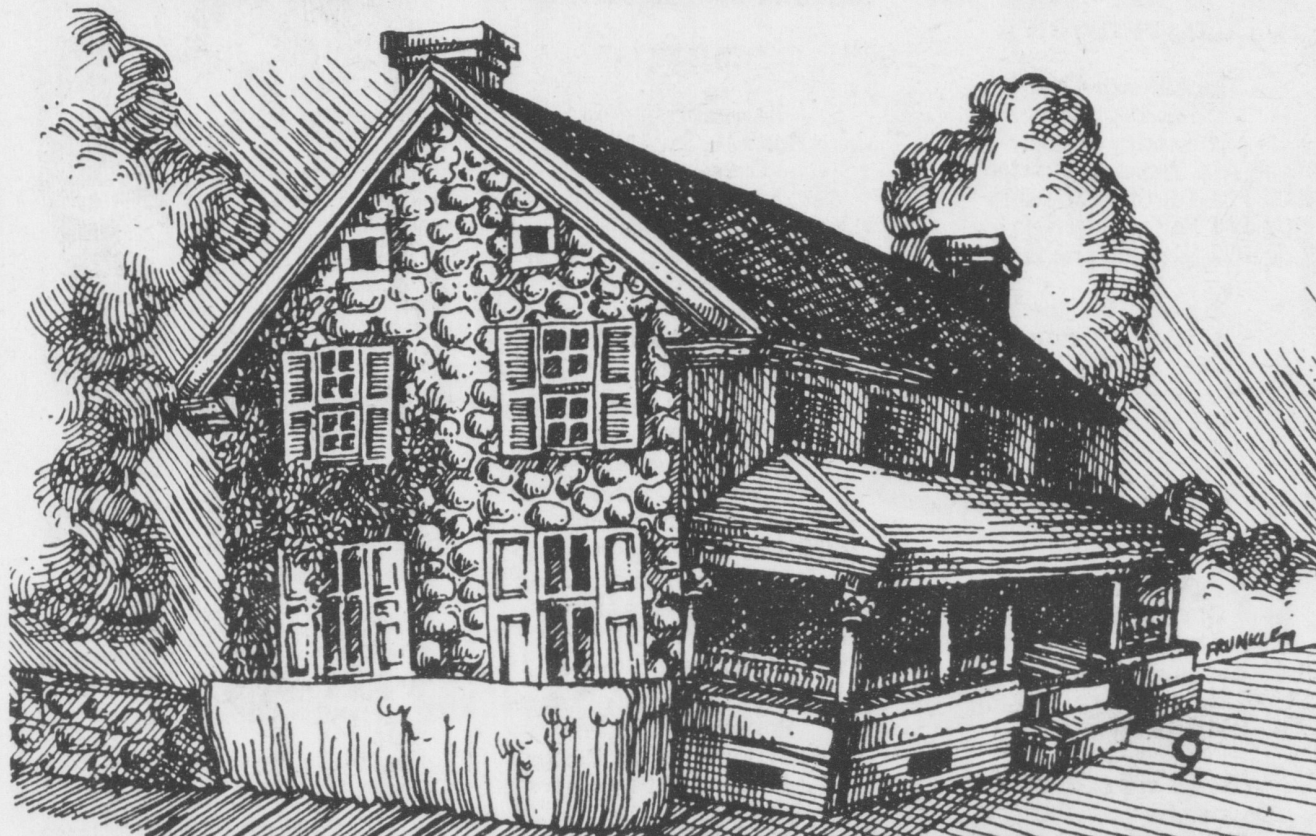
Theodore Darling House, East High Street, Maytown. This home, one of May-

town's earliest structures, is said to have been used as a barracks during the Revolutionary War. The story and one half brick structure still retains its classically molded water table on the facade. Restoration of the property by the Darlings should be completed in several months.

The Donegal Presbyterian Church, Donegal Springs Road, Mount Joy, was established in 1721 by Scots-Irish settlers in the Lancaster County frontier. Near the church stands the centuries old white oak known as the Witness Tree. Around this tree the congregation pledged their support to the American Revolution. The basic form of the building and the gambrel roof show Irish influences. The exact age of the church structure is not known, however, researchers set the approximate date somewhere between 1725 and 1740. The church is a rest stop on the tour.

The Mansion House at Donegal Mills Plantation, Trout Run Road, Mount Joy, was originally an 18th Century stone German farm house that was transformed into a palatial residence in the early 19th Century. It is furnished in several styles, including Empire, Early and Late Victorian. Open 6 to 8 pm only.

Proceeds from the tour will benefit the Rotary Club's youth and community projects, and the society's continued restoration of Haldeman Mansion and the establishment of a museum exhibiting the works and collections of Professor Samuel Stehman Haldeman.



The Adam H. Greer House, part of the Maytown-Bainbridge Tour