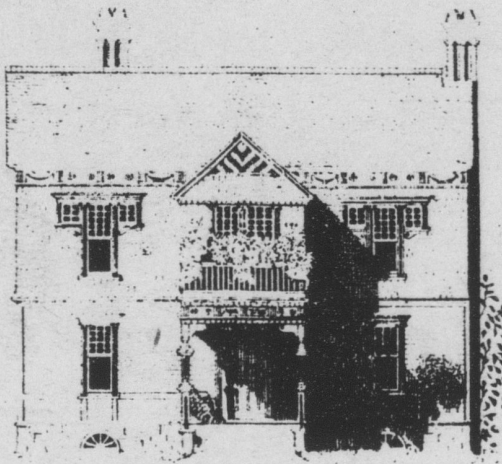


House paint (cont.)

[continued from front page]

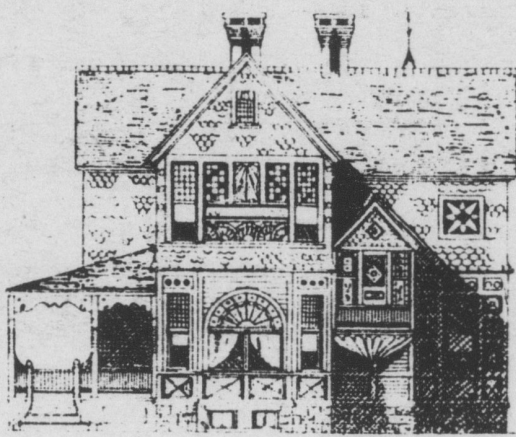
stone) and in sunny areas like San Francisco where it was especially popular, it was always painted in light colors. Here is a lighter

version of the Italianate:
 Body: Peachy tan.
 Porch, cornice, doors and window mouldings: Cream.
 Blinds (if any), moulding strip on cornice, porch grilles: Medium brown.



Stick and Shingle .
 First Story Body: Maroon.
 Shingle work of second story: Terra Cotta red.
 Panels in gables: Peachy tan.

Trimmings: Dark green.
 Window sash: White.
 Carved work: Chrome yellow.
 Blinds (if any): Green.



Queen Anne
 Shingles: Dark red—stained or painted.
 Woodwork: Dark green.

Panels, base of Oriel window: Old Gold.
 Sash: White.

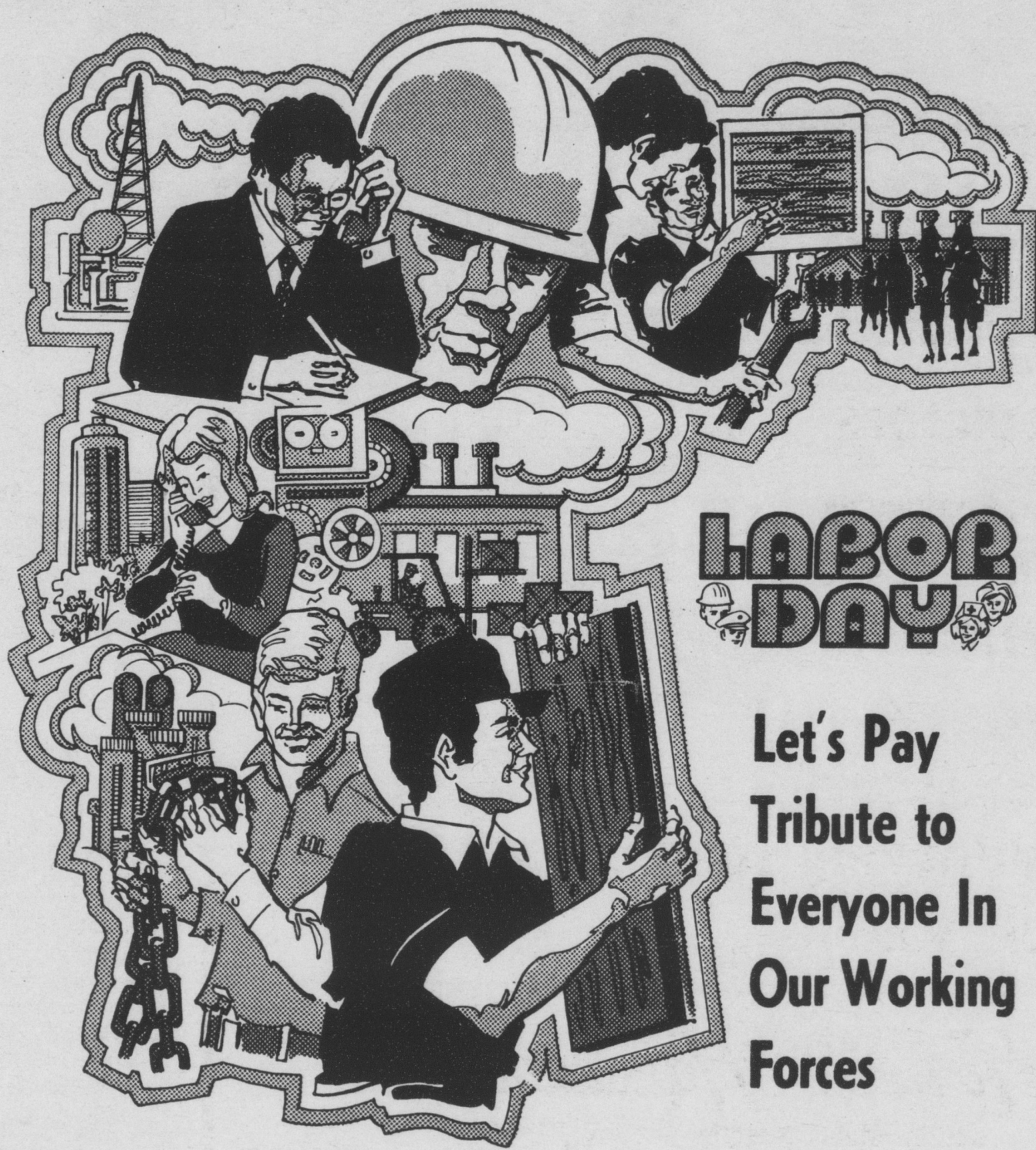
The color combinations given here show the variety of shades and hues used on a single house. The scheme for the Queen Anne house is the most unusual, but not for its own time—about 1885. Today's homeowner may not like these specific combinations at all. An alternate color combination can be worked out by staying in the range of colors suggested for the period. The important factor is the use of two or more colors for picking out the

details.
 It is not easy to generalize about the delineation of details because the Victorian period encompasses so many different types of decoration. But here is a suggestion: Before you select colors, stand in front of your house and look at it with an eye to what makes you house (or row) look different. That decoration and trim, or anything that might be labeled "unnecessary" today, is what should be painted to call attention to itself.

'Operation Paintbrush'

"Operation Paintbrush" is a program designed to provide free exterior house paint and necessary painting supplies to eligible homeowners in Lancaster County. Top quality exterior house paint will be available to home owners who reside in designated Neighborhood Strategy Areas, including: Marietta, Bainbridge, Rheems, Mount Joy, Columbia and Elizabethtown.

The program is funded by the Lancaster County Community Development Block Grant Program, through the sponsorship of the Commissioners, and is administered by the Redevelopment Authority. Information may be obtained by visiting the Redevelopment Authority on the fourth floor of Lancaster County Courthouse, or calling 394-0793.



Arnold Pontiac

Hostetter Hardware, Inc.

Arnold's Welding Shop

J.B. Hostteter & Sons, Inc.

Central Savings & Loan

Johnson's Bus Service

Marietta & Columbia

Miller's Tire & Service

Billmeyer's Jewelry Store

Nissley Funeral Home, Ltd.

Andrew F. Reymer, Supervisor

Crider's Citgo Service Station

First Federal Savings

Phillips Die Cutting, Inc.

& Loan of Lancaster

B. Titus Rutt Agency, Inc.

Garber Oil Co.

Stonebridge Farm Butchershop

Terry Hamilton Barber Shop

Susquehanna Times & Magazine, Inc.

James Heilig Funeral Home

Heistand's Memorials, Inc.

Big T Taste Freez

Hollinger Oil Service

Union National Bank