

CALL IN NEWS.....to
 Hazel Baker [Marietta]
 426-3643
 Cherie Dillow [Mount Joy]
 653-1609
 The Susquehanna Times
 426-2212 or 653-8383

RALPH M SNYDER
 R.D. 2 BOX 3040
 MOUNT JOY, PA. 17552

SUSQUEHANNA TIMES

Vol. 80, No. 34, August 27, 1980

Susquehanna Times & The Mount Joy Bulletin
 MARIETTA & MOUNT JOY, PA.

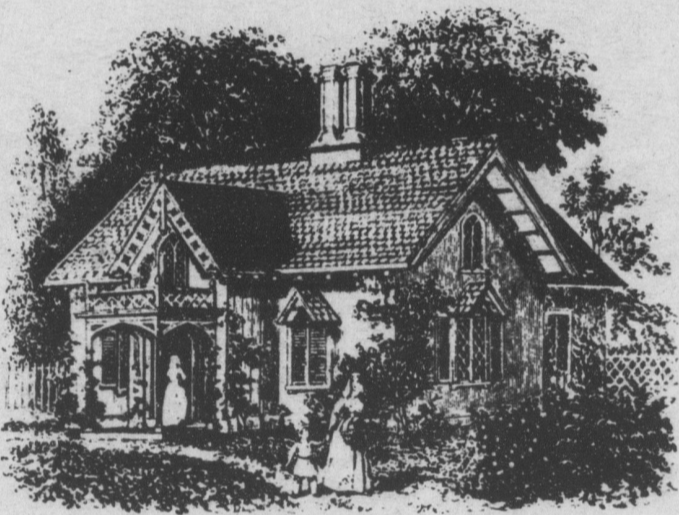
FIFTEEN CENTS

Painting the exterior of your old home

The following house paint guidelines were sent to us by Linda Ross, Marietta, who felt home owners taking advantage of the Lancaster County Community Development "Operation Paint-brush" program would be

able to use the ideas.

The descriptions below are taken from the August 1976 issue of *The Old-House Journal*, and list the colors of paint originally used on several styles of houses.



Gothic Revival

Body: A warm gray.
 Eaves, porch, window trim: Dark grayish-blue.
 Blinds: Dark blue.

or

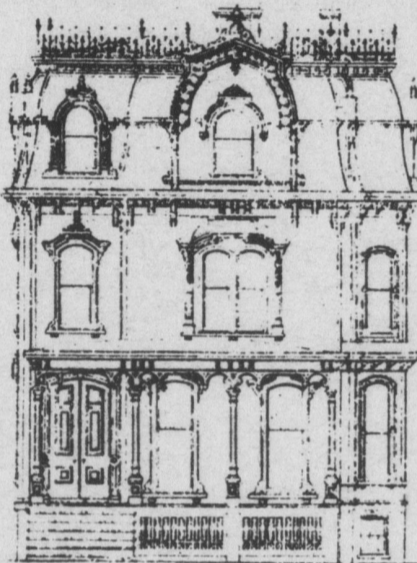
Body: Drab.
 Eaves, porch, window trim: Light brown.
 Blinds: Dark brown.

Mansard

Body: Maroon.
 Porch, trim, cornice: Green.
 Blinds: Gray.
 Sash: Brown.

or

Body: Yellowish beige.
 Porch, trim, cornice: Tan.
 Blinds: Dark brown.
 Sash: Same color as body.



Stick Style

Body: Light sage.
 Porch, bands, corner-

boards, etc.: Orange-yellow.
 Cut-work and chamfered edges: Black.



Bracketed Farmhouse

Body: Warm sage green.
 Porch Brackets, Window trim: Straw.
 Shutters and Blinds: Dark brown.

or

Body: Fawn, cream.
 Porch, brackets, window trim: Medium brown.
 Shutters and Blinds: Dark green.

Note: The color combinations for the Gothic Revival and Bracketed farmhouse are appropriate for many styles—Carpenter Gothic,

the Bracketed and the wood Italianate—built throughout the Victorian era. A plain house may have no more than a steep gable, a pointed (lancet) window or sawn wood ornament to show its Gothic influence. According to the directions given by the architects these color schemes can be reversed. That is, light trim on a dark body or dark trim on a light body. But shutters and blinds were always very dark and usually the darkest brown or green.

Italianate

Body: Light grayish-green.
 Porch, cornice, doors and window mouldings: Dark olive green.
 Blinds, moulding strip on cornice, door trim, etc.: Reddish-brown.
 Sash: Same as porch.

Note: The above color scheme is from the Late Victorian period. But the Italianate house had been popular since mid-century. At that time it was painted in light shades resembling stone (particularly Italian *[continued on page 5]*)



Board reveals details of contract proposals

With the 1980-81 school year only one week away, Donegal school district teachers have yet to sign contracts. After 14 bargaining sessions, beginning in January, between the school board and members of the Donegal Education Association, an agreement has yet to be reached. The teachers plan to return to work Tuesday while contract talks continue.

At Thursday night's school board meeting, Dale Arnold, chairman of the board's teachers' negotiations and welfare committee, revealed the terms of the board's contract proposals.

"We (the board and teachers) are farthest apart on dental coverage," Arnold said Thursday night. While Donegal teachers are requesting a full dental program, the board is outlining a program that would provide benefits for the employee only the first year of the contract. The second year would allow for three parties, two parents and a child, and the third year would provide dental benefits covering the entire family.

The first year of the contract would allow a maximum of \$800 per person per year, the second and third years, \$1,000 per person per year.

Salary increases over the three-year term of the contract will depend on both the years of service and educational level.

Teachers with one to five years of service will receive a \$1,300 raise for the 1980-81 year; with six to ten years, a \$1,400 raise; with a bachelors degree and 11 to 20 years, a \$1,500 raise; with a bachelors degree and over 20 years, a \$1,650 raise; with masters degree and 11 to 20 years, a \$1,550 raise; and with masters degree and more than 20 years, a \$1,700 raise.

Each category would have an additional \$50 added to the raise rate for the following two years.

The average increases for the 130 employees for 1980-81 would be \$1,466, or 9.9%. Increases for the three year contract period over the 1979-80 scale would be \$4,512, or 30.47%.

In addition to salary proposals, the board also released fringe benefit plans.

The board proposes mileage reimbursement at whichever rate is higher—that set by state statute or I.R.S.

They also propose credit reimbursement of \$400 for 1980-81, \$425 for 1981-82, and \$450 for 1982-83. \$100 of these amounts can be *[continued on back page]*

This week's calendar

Thursday, August 28, a meeting of the newly formed Emergency CB club, 7:30 pm in the Bainbridge Fire Hall. Phone 367-0862 for information.

Friday, August 29, at 8 pm, the first Donegal football game of the season at Columbia.

Tuesday, September 2, at 1:30 pm, a meeting of the Marietta Senior League at the Community House.

Tuesday, September 2, 7:30 pm, the first fall rehearsal of the Mount Joy

Community Chorus in the Fellowship Hall of Trinity Lutheran Church, Mount Joy.

Wednesday, September 3, the first day of school in the Donegal district.

If your group, club or organization has information that it would like published in the *SUSQUEHANNA TIMES* Calendar, just send it to the newspaper by Friday of the week before the publication date. You may also phone in the information at 653-8383 or 426-2212.