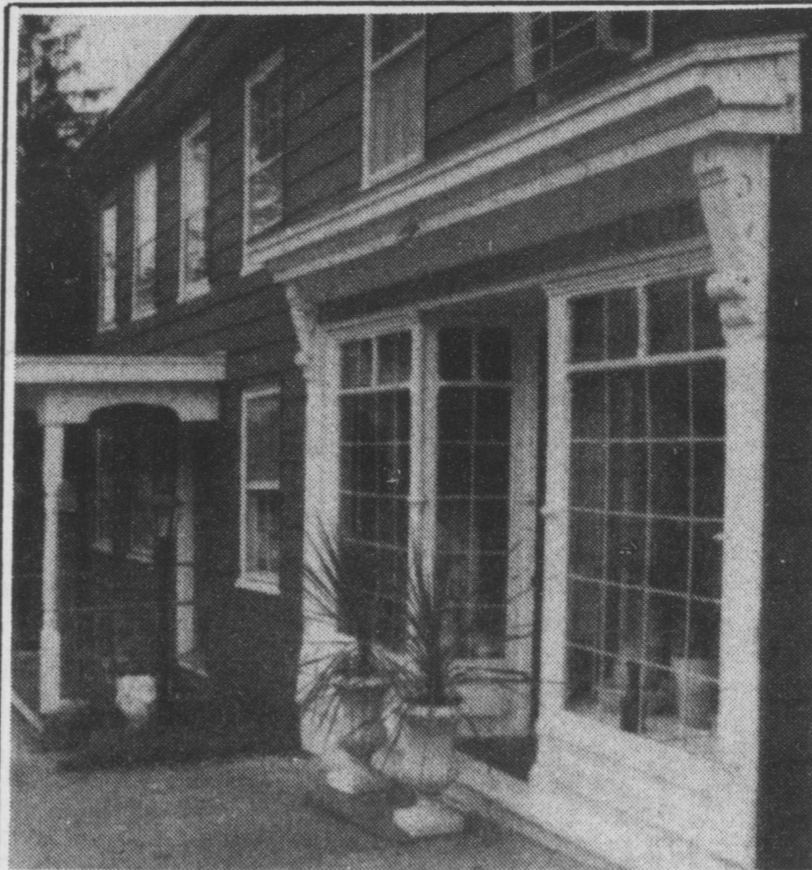


Bainbridge-Maytown Autumn Candlelight Tour this month

The Bainbridge-Maytown Rotary Club and the Haldeman Mansion Preservation Society will co-sponsor the Bainbridge-Maytown Autumn Candlelight Tour to be held on Sunday, October 14 from 2-7 PM. Tickets may be obtained at any one of the twelve locations on the tour the day of the event. Admission to any or all of the homes is \$3. Proceeds from the tour will benefit community and youth projects sponsored by the Rotary Club and the on-going restoration and preservation of historic Haldeman Mansion.

Several interesting and historical old homes are featured on the tour in and around the Bainbridge and Maytown area, plus Three Center Square Inn on Maytown Square and the Nissley Vineyards Winery near Bainbridge. This is the only commercially operated winery in northwestern Lancaster County. Also featured are two churches, St. John's Lutheran in Maytown, and St. Luke's Lutheran in Bainbridge.

The tour includes the following twelve locations and a description of each location is given.



Gingrich House

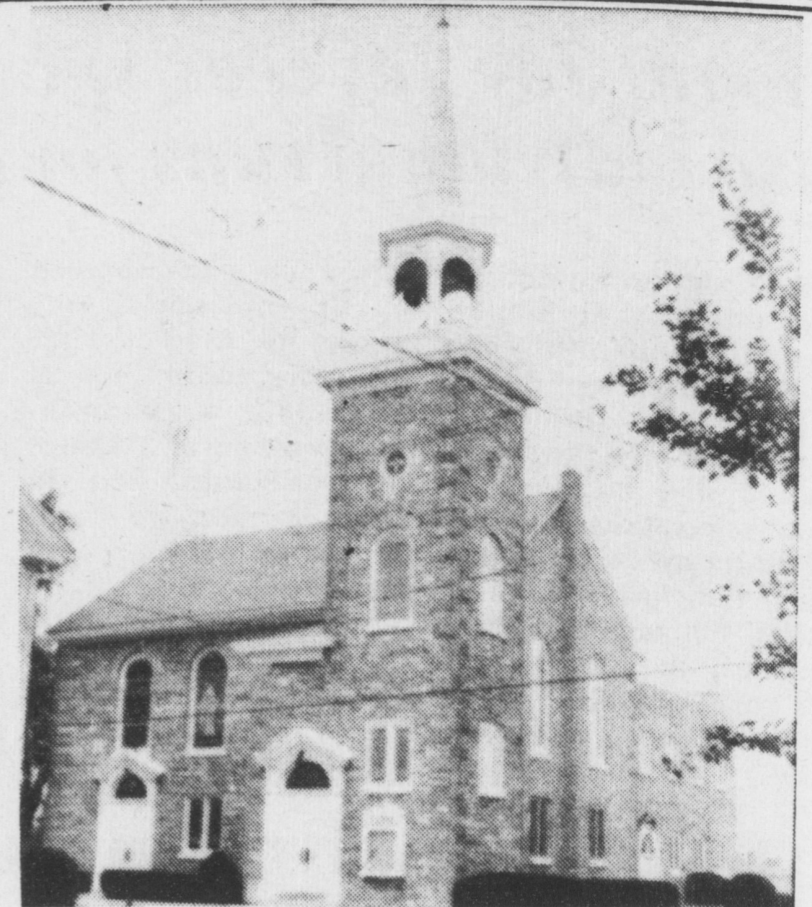
The Gingrich House

HARRISON & MARGARETTA GINGRICH, 2nd St., Bainbridge, was built in the early 1800's. A salt-box with four rooms and a summer kitchen in the rear joined to the house by a porch, had a two-story addition built which was used as a tailor shop and clothing store.

From 1899 to 1927, and again from 1955 to 1960, the Post Office was housed in

this building. There were no structural changes made to the front of the house. The windows in the front are the original ones with the sign above painted by an R.J. Miller.

The house is furnished in antiques of different periods and there is a large collection of ironstone and Adams china. Questions pertaining to the house and the antiques would be most welcome.



St. John's Lutheran Church

Saint John's Lutheran Church

SAINT JOHN'S LUTHERAN CHURCH, erected in Maytown in 1769, was built of logs and relatively well dressed, the sort of building we think of as a blockhouse.

In 1804 a new building was erected. The building was rectangular, one story with very high ceilings, arched windows and a gallery extending around the two ends and along the west side of the interior. A "Wine-glass Pulpit" was built against the center of the east wall. The original music was provided by a Melodeon.

In 1853 the whole interior was remodeled with a floor put in just above the windows.

A major renovation was undertaken in 1896 when a large stone tower was built. The original arched windows were restored with stained glass memorial windows, and a painting of Christ the good Shepherd was also added to the North end of the church.

A new Christian education building was added in 1959, which gives the church the look you recognize today.



Nissley Vineyards property

The Nissley Vineyards

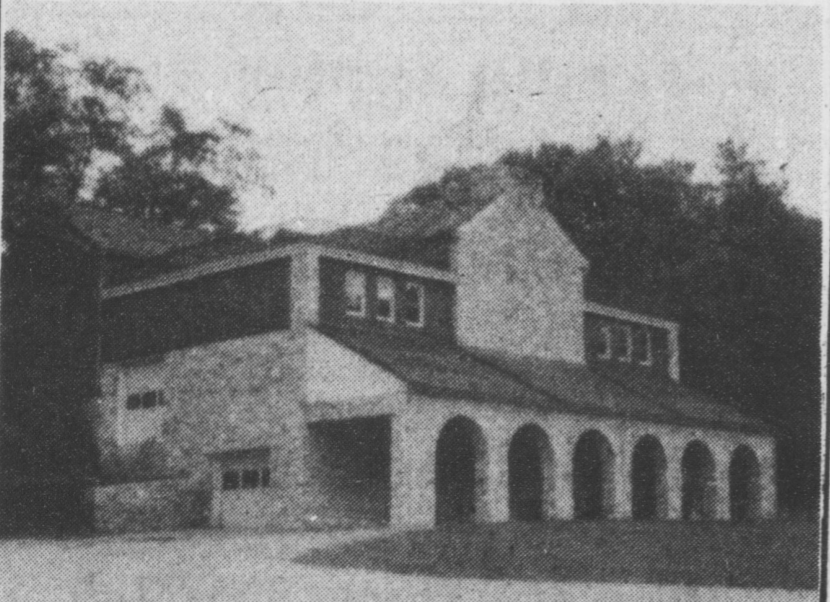
THE NISSLEY VINEYARDS Winery with its graceful stone arches reflect the peace and charm of the winery's setting. Not far from the main building rests an 18th Century stone mill which, together with its companion, a stone-arch bridge, inspired architect Clifford Coleman's design for the winery.

The actual construction of the winery was begun in 1976, and completed in 1978. Having first weatherized an old existing tobacco

barn to house the large wine tanks, a front stone section was built to provide space for the auxiliary wine making equipment.

Although the building has a traditional look, the wine making equipment is up-to-date.

Here the Nissley Family produce and bottle Pennsylvania vintage wines from their 30 acres of French-hybrid and vinifera grapes. Your questions will be welcomed as you tour the grounds and edifices of this most unique family venture.



Nissley Vineyards

Three Center Square Inn

THREE CENTER SQUARE INN—owned by Mr. & Mrs. Harry Rebman, is an early stage coach house and tavern located in Maytown. This structure has housed an eating establishment since 1780 (log portion) with a brick section added in 1820. Early maps record this property as The Washington House. Restored, Three Center Square Inn was

opened in 1978, featuring gourmet cooking. Six burning fireplaces add warmth and charm to the atmosphere.

Because it is a place of business, open house will be limited to the hours of 2PM to 4PM. Visitors may make reservations for lunch or dinner during the regular business hours.

The Frank Home

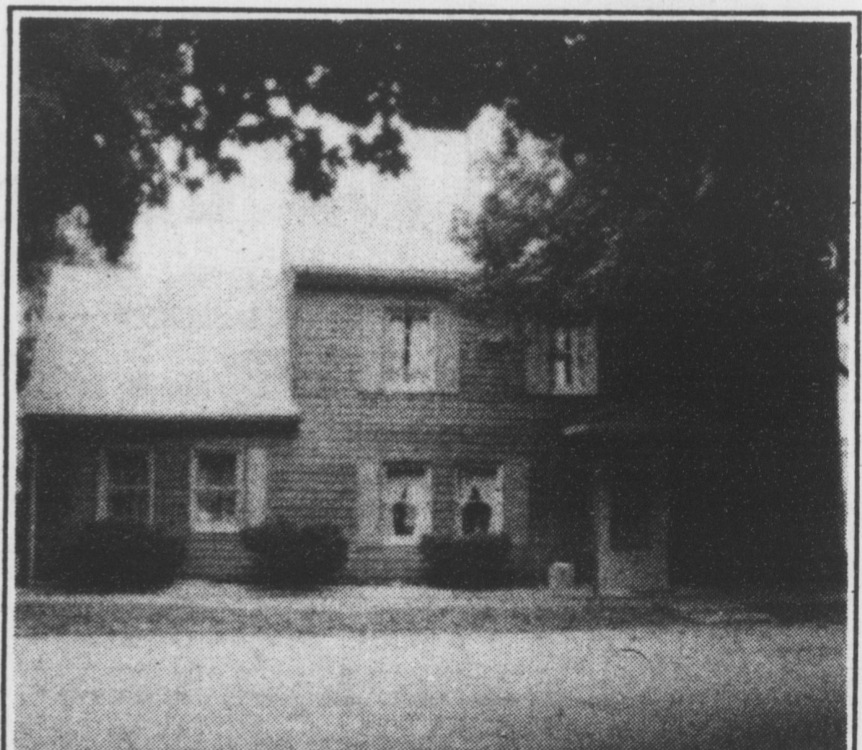
MR. & MRS. JACK H. FRANK AND SON, 100 S. River St., Maytown, have a splendid example of Federal period architecture. This house was built in 1834 and is characteristic of town-house-type homes. Paired chimneys add to its beauty. Cornices are of brick, an unusual feature.

The summer kitchen contains a walk-in fireplace and originally contained a bake oven and smokehouse. Fireplaces in the front living room and in the bedroom are useable.

The hallway features a stairway which is open to the third floor landing. Floorboards are random width throughout and of different woods. Original door and window hardware are intact.

Family heirlooms are preserved, and the Williamsburg treatment is prevalent throughout the interior.

This home has been in the Frank family since 1910. During the tour, the Frank family will welcome your questions and comments.



Kraus House

The Kraus Home

MR. & MRS. CHAS. M. KRAUS, III, 113 E. High Maytown, is a good example of early homes of rural Penna. in the late 1700's. The original three rooms were built at that time, and the house was enlarged to its present space in 1850. This was the third residence built in Maytown. A cigar maker used the first

floor addition as a tobacco shop and processing room. David Bowman, a clock maker, also resided in this house at an early date.

The outstanding points of interest is the excellent log construction and restoration along with a section of split lath and cow hair plaster now being preserved by the present owners.