



Ms. Nix addressing the Mount Joy BPW

Pennsylvania BPW Woman of the Year Mount Joy club

Ms. Madelyn Nix, who was chosen "Pennsylvania BPW Woman of the Year" in 1978, was guest speaker at the February 26 meeting of the Mount Joy Business and Professional Women's

Club.

Ms. Nix, who is an attorney for Sperry New Holland, spoke to the club on "Women's Legal Rights."

Obituaries

HAROLD W. HERR

Harold W. "Fuss" Herr, 67, of 318 North Barbara Street, Mount Joy, died at his home February 23 following a short illness.

Husband of the late Agnes Witmer Herr, who died in 1961, Herr was born in Manheim, the son of the late Allen H. and Ada Hollser Herr.

He was a retired cobwinder who had worked at Raybestos Manhattan Inc., Manheim. He was a member of Mount Joy's Friendship Fire Co.

Herr is survived by a stepdaughter, Myrtle B.; wife of Kenneth O. Teufel, Mount Joy; three granddaughters and seven great-grandchildren. He is also survived by two sisters, Mary Meiskey, Manheim and Helen Coppenhaffer, Lancaster.

MERVIN L. NOLL

Mervin L. Noll, 53, died on February 15th at St. Joseph Hospital after an illness of several weeks. He was the husband of Viola Nell Noll.

Noll was employed by the Merchandiser, Mount Joy, and Olmstead Air Force Base. He served in the Army Air Corps during World War Two.

Born in Dauphin County, he was a son of the late Harrison and Fannie Rider Noll.

Surviving him, in addition to his wife, are: a son, J. Richard Noll, Rowenna; a son, Mervin L. Noll, Jr., of Columbia; a step-daughter, Frances, the wife of David Boyd of Maytown; five grandchildren; a brother, Foster Noll, of Bainbridge RD1; and a sister, Ethel Albright, of Lancaster.

for a lifetime of savings

If you're planning to build an electrically heated home, make it "Energy Efficient".

Energy Efficient Homes are designed for a lifetime of energy savings . . . a feature so important in these days of rising costs.

To earn an Energy Efficient Home Award, your builder must meet or exceed PP&L's standards for:

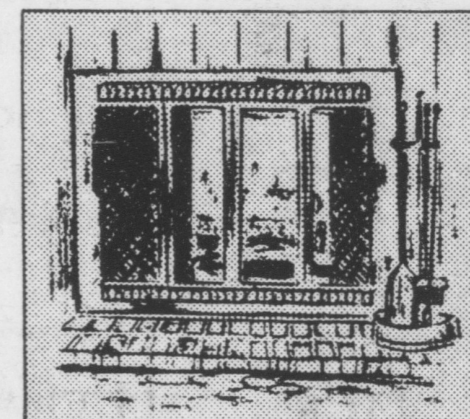


✓ Insulation and sheathing

✓ Windows and doors

✓ Ventilation

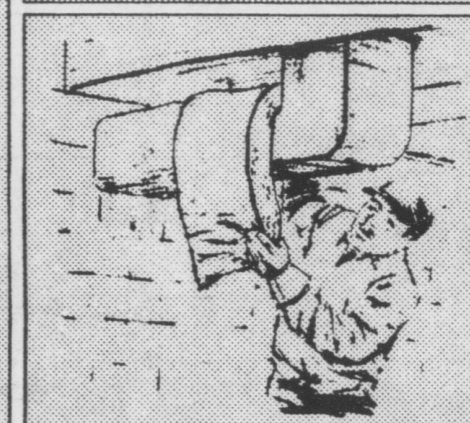
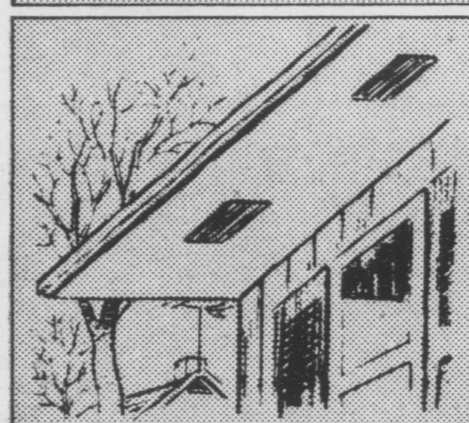
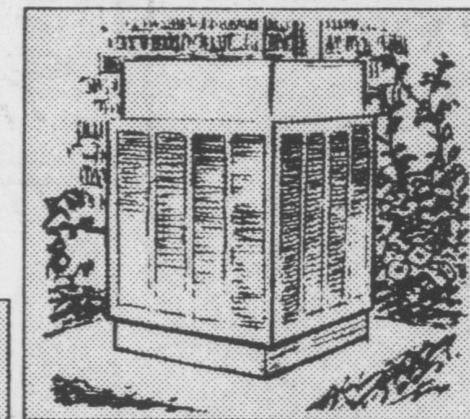
✓ Fireplace (if used)



✓ Heating and Cooling

✓ Air duct system

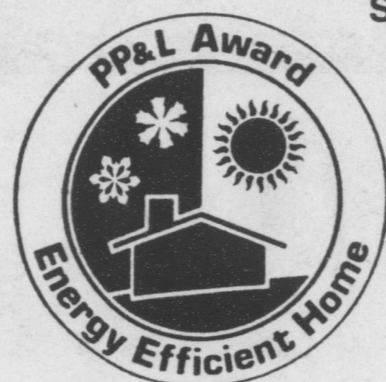
✓ Water heating



Ask your builder about an Energy Efficient Home. If he's not familiar with the building requirements for one, call PP&L. One of our residential consultants will be glad to give you specifications on materials along with builder information.

Symbol of savings . . .

"Your home's worth more because it offers more."



PP&L