

Labor Day Week

SPECIALS

- '76 FORD Van V-8, stick
- '76 BUICK Skyhawk Hatchback, loaded
- '75 FORD Pick-up, 3/4 ton, AT, PS, PB
- '75 FORD 1/2 ton, AT, PS, PB
- '75 FORD Torino Station Wagon, PS, PB
AT, AC
- '74 TOYOTA Pick-up long bed, stick
- '74 PINTO Wagon 4 cyl., 4 spd.
- '74 FORD Van V-8, stick
- '72 CHEVY Vega Hatchback, AT
- '72 CHEVROLET AT, PS, PB
- '72 PONTIAC AT, PS, PB
- '69 PLYMOUTH Wagon 4 cyl., 4 spd.
- '66 FORD Pick-up, 4 spd.
- '66 DODGE Coupe AT, PS, PB
- '65 FORD Pick-up 6 cyl., 3 spd.

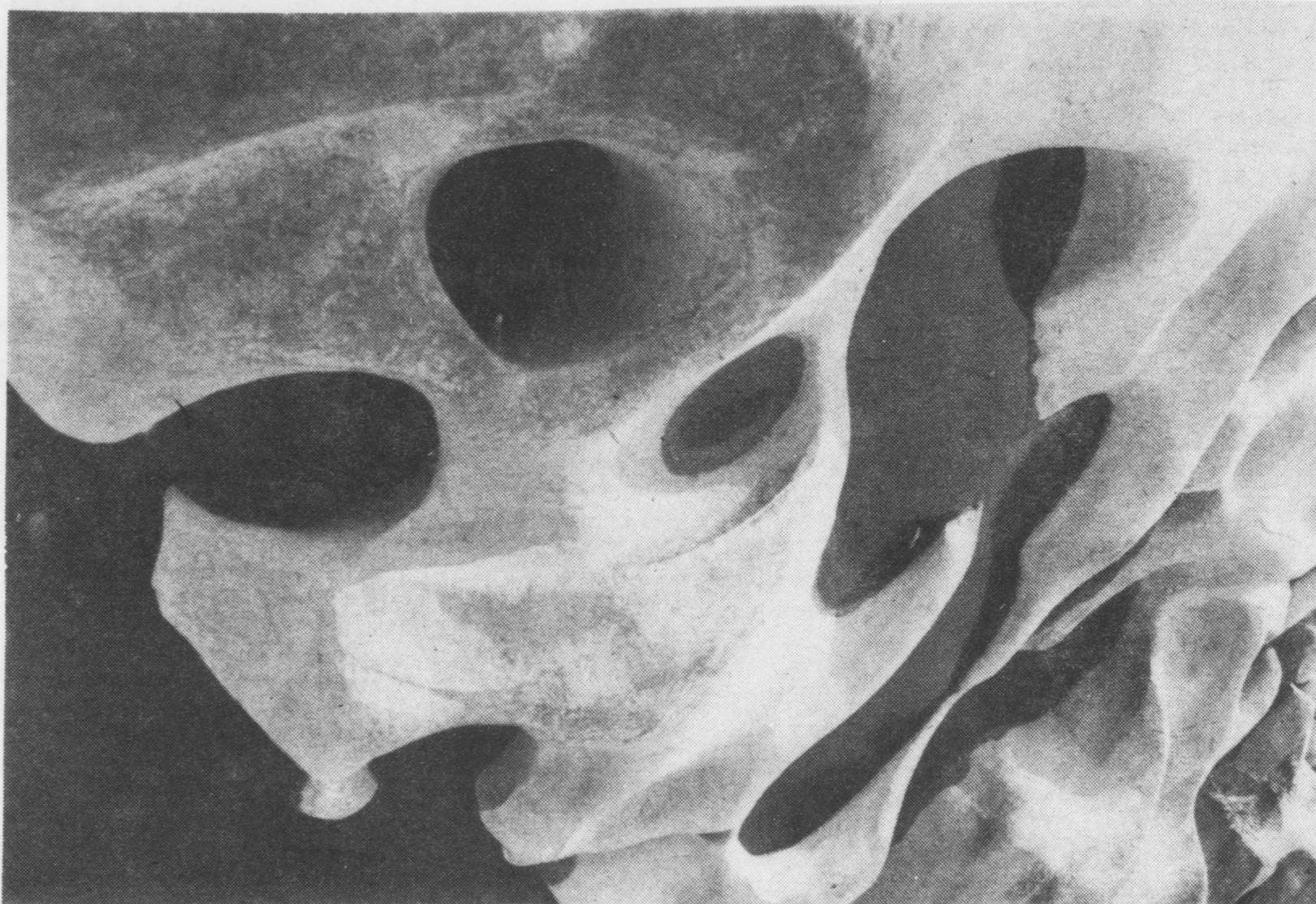
A GREAT SELECTION OF
LOWER PRICED CARS

L & G MOTORS

R. D. 2, Rt. 230 West, Mount Joy, Pa. 17552
Telephone 653-8210 - Monday thru Saturday

What's this?

If you can guess, you might get a free subscription
to the county's most interesting magazine!



What is it? That's for you to guess. If you can tell us what this is, and where it is, you could win a free subscription to the **Susquehanna Magazine**. Send us a postcard (do not phone) with your guess. The first two

correct replies (those with the earliest postmarks) will get the subscriptions. So don't delay, write today!

Hint: The photo was taken less than 5 miles from either Marietta or Mount Joy, in Lancaster County.

Back to School Sale

Boys' Anklets
39¢ pair

Looseleaf Binder
\$1.89

\$2.39

School Bag
\$1.39 \$3.49

Boys' Fruit of the Loom Underwear

Knee Hi's
\$1.00

Filler Paper
39¢ 89¢

Misses Briefs
59¢

Martin's 5 & 10
Mount Joy
Marietta 5 & 10
Marietta

Locust Grove on National Register

Locust Grove, also known as the Haldeman Mansion, recently was named the

21st Lancaster County property on the National Register of Historic Places,

maintained in Washington, DC. The Mansion is located about a half mile south of Bainbridge.

The late 18th Century stone house was the birthplace of Samuel Stearns Haldeman, a distinguished scientist and authority on natural history, ethnology, philology, and archaeology.

The author of 150 books, Dr. Haldeman wrote "On Species and their Distribution," which paved the way for Darwin's theory of evolution.

Locust Grove's architectural significance rests on its fine workmanship and proportions. The stonework is native sandstone with smooth quoins.

Two other buildings are on the site, also of sandstone. The old smokehouse is now deteriorated.

On the 2.6 acre site is an old Indian cemetery, used from 1718 to 1743, and part of the Shenk's Ferry occupation.

J.E. Baker Co., York, is the owner of the property. It is leased to the Historic Preservation Trust of Lancaster County.

END OF SUMMER Blast !!

at Root Distributor

Coke
85¢
6 pack



10 oz. returnables

\$3.40 per case

\$3.95 per case

A-Treat cans

Pepsi 10 oz. returnables

\$3.40 per case



85¢ 6 pack

Drive Thru Service