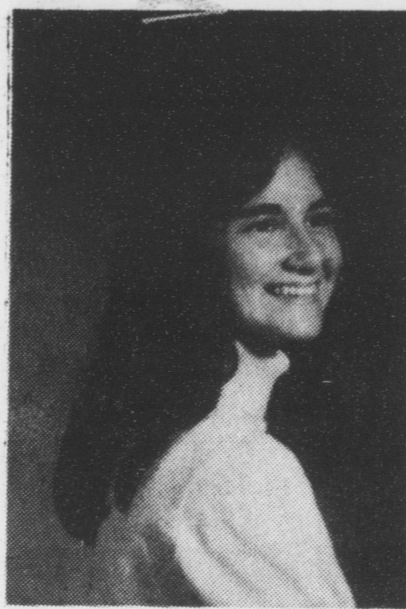


Mary Kanoff enlists

Mary Kanoff, daughter of Mary and Michael Kanoff, 9 W. Elizabeth St., Maytown has enlisted in the United States Army's Delayed Entry Program on March 22, 1977. She will depart for active duty on November 16 for 7 weeks basic training. After completion of basic training Mary will go to 8 weeks school for training as a Chaplain's Assistant where

she will learn to supervise and perform duties to assist the Chaplain in the upkeep of the Chapel, conduct religious and related services, and the performance of related administrative functions. A graduate of Donegal High School, Mary will further her education under the Army's Project Ahead program.



Mary Kanoff

DID YOU HEAR...

Mr. and Mrs. Robert Berghaus, 281 West Walnut Street, Marietta, celebrated their 16th wedding anniversary on June 17th.

POOPSIE'S Key & Lock Shop
 136 West Market Street
 Marietta
 426-2510



SHOP HOURS:
 Mon., Tue., Thu. & Fri. 1-6
 Sat. 10-6 Wed. & Sun.—CLOSED

Lawrence Priester completes basic school

Marine Second Lieutenant Lawrence E. Priester, brother of Mrs. Jeanette C. Smith of 18 N. Bank St., Marietta, Pa., was graduated from the Basic School.

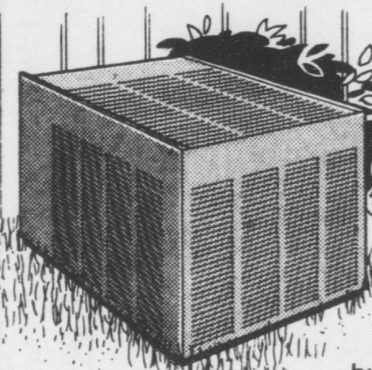
The Basic School is located at the Marine Corps Development and Education Command in Quantico, Va. It is designed to prepare newly-commissioned officers for assignment to the Fleet Marine Force and emphasizes the duties and responsibilities of a rifle platoon commander.

The training includes instruction on land navigation, marksmanship, tactics, military law, personnel administration, Marine Corps history and traditions, communications and the techniques of military instruction.

During the 26-week course, leadership by example and teamwork were stressed and the students participated in a demanding physical conditioning program.

A 1976 graduate of Lebanon Valley College, Annville, with a bachelor of science degree, he joined the Marine Corps in July 1976.

Before You Buy Central Air Conditioning, Check the E.E.R.



IT CAN SAVE YOU MORE THAN ENERGY.

Energy Efficiency Ratio is defined as: The quotient obtained by dividing BTU'S/HR. output by the electrical watts input during cooling. This value represents the relative electrical efficiency of air conditioning equipment.

Let us show you in dollars and cents how a high efficiency Rheem system can actually save you money in operating costs, even though the initial investment may be slightly more. Call us for complete details.

Rheem A Name You'll Feel Comfortable With

R. V. RICHARDS & SONS

426-1836

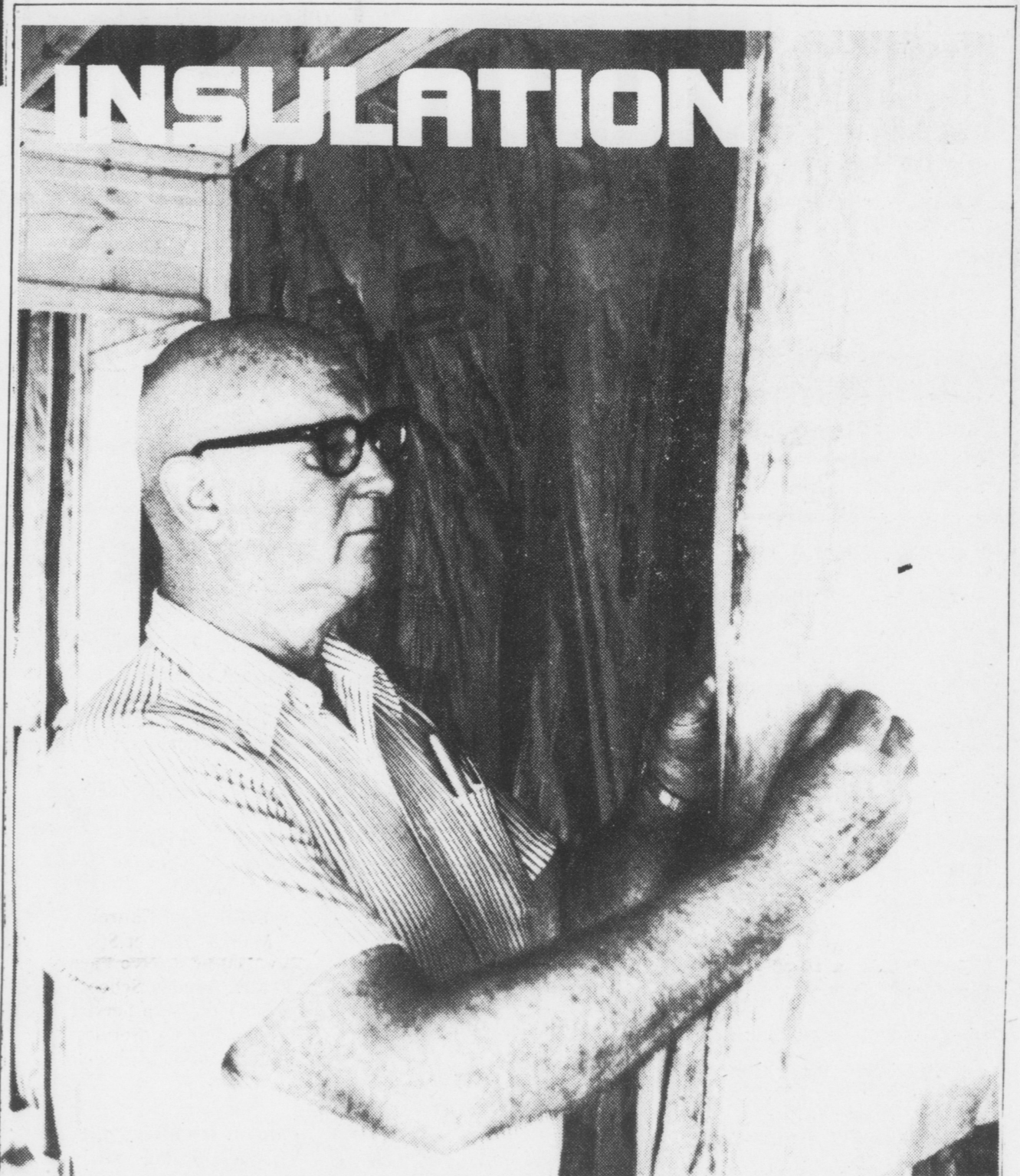


COLUMBIA

R. D. 1



"Call us to do your work"



If you're planning to buy an electrically heated home...

Energy-Efficient Homes Offer More

Insulation not only adds comfort to your home but saves you money season after season. In winter, it holds heat in to lower heating bills. In summer, it keeps your home cooler to reduce air conditioning costs.

That's why PP&L-approved Energy Efficient homes are super insulated. In ceilings it's as much as 10-inches thick... full thickness in every exterior wall. Even floors, over unheated areas like basements and garages, are heavily insulated. And, in the case of slab floors, you'll find insulation all around the perimeter.

The sheathing used in Energy Efficient

homes insulates too. It's tongue and groove... 1-inch thick polystyrene. With 4 times the insulation value of standard type sheathing, it is one of the best insulating materials on the market today.

Doors and windows must meet PP&L's insulation requirements as well. Fact is, everything that should be insulated is... right down to hot water pipes and heating ducts.

So, if you're thinking of a new electrically heated home, look for one that qualifies for the Energy Efficient Home Award. It's your assurance that you'll be getting the most practical energy-saving features money can buy.



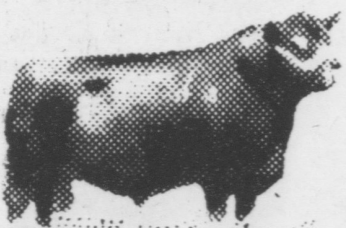
If your builder is not familiar with the requirements of an Energy Efficient Home, call PP&L.

Ask for a residential consultant who can supply you with materials and equipment specifications and builder information.

PP&L

**TOM McCOY
 CUSTOM
 BUTCHERING**

**MILTON GROVE
 R. D. 3
 Elizabethtown
 653-5335**



1 stop butcher shop, poultry dressing, beef, pork & sheep. Slaughtered, cut, wrapped & frozen. Sugar curing.

SUMMER CLEARANCE SALE

on many plants in stock

**Flowering Annuals—
 1/2 price**



**Geraniums—
 1/2 price**

RUHL'S FLOWERS

PHONE 653-4006 Pinkerton Road Mount Joy