

# Ourself on TV



While Ryan O'Leary operates the video camera, Mike Melhorn (right) "interviews" Bill Nagy (left).



Teacher Joe Siberski scrutinizes an instant re-run of an interview. Sandy Shearer (left) and Laura Negvesky (right) are students in the class. Playback lets students watch themselves being interviewed, and helps them to improve their performance.

## n indoor game

Pequea Valley relied heavily on their size and power, but Donegal refused to be outmuscled. With just thirteen seconds remaining in the fourth overtime period, Henry Klugh gained control of the ball deep in the left corner and sent an incredible shot screaming along the floor between Pequea Valley's goalie and goal. The ball hit the far goal bar and bounced into the net to give Donegal the 2-1 victory and the championship.

After the game Mr.

Arnold, the athletic director at Donegal, presented the trophy to the team and their coach.

Playing for the Indians were Greg Lindemuth, Greg Newlin (goalie), Henry Klugh, Mel Hay, Randy Houseal, Marc Battalli, Sang Houa, Kevin McKain, Ted McKain, Randy Shelly, Mike Seaman, and Na Moua. The coach was Bernie Thome.

The officials for the tournament were Ron Wagner, Banks Wagner, and Ed Miller.

## Volleyball tourney; kids vs. teachers

Three volleyball games between the women faculty and the Donegal Girl's Basketball team will play an exhibition benefit contest on Thursday, March 31 at 7 p.m. Best out of three games will win. This will be followed by members of the male faculty playing members of the W.I. Beahm Junior High School in basketball.

Tickets may be purchased at the door (\$1.25 for adults and 75c for students). Proceeds will be contributed toward project D-Lite. The event is sponsored by the Donegal Booster Club.

### DID YOU HEAR...

Mrs. Warren Foley, Mount Joy, retiring vice president of the Board of Directors of the Penn Laurel Girl Scout Council was recently presented with a gift of appreciation at a meeting in the Council's headquarters in York.

## athletics

chants and industries. A few coaches are still needed and volunteer workers are always appreciated. The next meeting, open to the public, will be held April 7th, at 7 p.m. in the Community House.

## Scouts conquer muddy trail

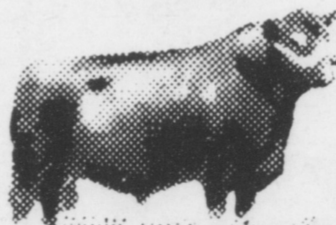
Boy Scouts Troops in the Western District of the Lancaster-Lebanon Council held what was to be a "Frozen Trail" but really was a "Muddy Trail" on Saturday, March 5, at Gettysburg National Military Park. 300 Scouts and Leaders from Elizabethtown, East Petersburg, Rheems, Mount Joy, Landisville, Manheim, Mountville, Columbia, Maytown, Rohrerstown, Centerville, and Penryn hiked the ten mile Gettysburg Heritage Trail which was developed by the York-Adams Council Boy Scouts of America along with the National Park Service.

## Bake sale

The Women of Bethel A.M.E. Church, Fairview Avenue, Marietta, will sponsor a bazaar, bake sale with a white elephant table as a Women's day project on Saturday, March 26 from 10 a.m. until 4 p.m., at the church. Mrs. Jane Tucker and Mrs. Jean Becton are co-sponsors of the benefit.

### TOM McCOY CUSTOM BUTCHERING

MILTON GROVE  
R. D. 3  
Elizabethtown  
653-5335



1 stop butcher shop, poultry dressing, beef, pork & sheep. Slaughtered, cut, wrapped & frozen. Sugar curing.

**Wolgemuth Fruit Market Specializes in Good Food at the Best Possible Prices**  
**Quantity Packs Make Your Food Dollar Go F-A-R-T-H-E-R**  
**While YOU FEED YOUR FAMILY BETTER STOP & SHOP OFTEN at WOLGEMUTH'S**  
**Where you can get your GARDEN SUPPLIES:**

**Rohrer's Seeds—Seed Potatoes**

**Ortho Sprays—Peat Moss**

**Fertilizer—Tools**

**WOLGEMUTH FRUIT MKT**

**¼ mi. W. of Mt. Joy, along Rte. 230**

**Ph. 653-5661**

**Daily 8 a.m. to 6 p.m.; Fri., 8 a.m. to 9 p.m.**

**Saturday-8 a.m. to 5:30 p.m.**

## L & G MOTORS

"QUALITY USED CARS and TRUCKS"



R. D. 2, Rt. 230 West, Mount Joy, Pa. 17552

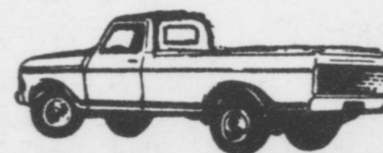
### TRUCKS

- 1976 FORD F100 AT, PS, PB, AC - Loaded!
- 1976 FORD VAN E250, sharp!
- 1975 FORD Courier, 4 speed, low mileage
- 1975 FORD Super Cad F-250, AT, PS, PB
- 1975 DODGE Club Cab D-100, AT, PS, PB
- 1974 FORD VAN E-100, sharp!
- 1974 DATSUN ½ ton, AT
- 1973 FORD F-100, 3 speed, PS, PB
- 1973 FORD F-100, AT
- 1970 FORD F-100, 3 speed
- 1969 GMC C-25, 6 cyl., 3 speed

### CARS

- 1975 FORD Torino Wagon 10 pass., AT, PS., PB, AC.
- 1975 FORD "Elite" AT, PS, PB, AC, Cruise, "Loaded"
- 1973 LINCOLN Continental Sedan, PS, PB, AC, "Big car"
- 1972 PONTIAC Coupe AT, PS, PB, AC, sharp!
- 1970 CHEV. IMPALA Coupe AT, PS, PC
- 1970 CHRYSLER Newport PS, PB, AC
- 1969 PLYMOUTH Satellite

WE HAVE MANY MORE  
(All Price Ranges)



PHONE 653-8210

Mondays thru Saturdays

## MT. JOY TWIN KISS

(Under new management)

Nationally known for our Frosted Root Beer

**SPECIAL Cheeseburger 94c**  
French fries & mug of Root Beer

Clean Facilities — Fast Courteous Service!

Call in Order 653-1791

Family Prices — OPEN 7 Days a Week.

Sun. - Thurs. 10 - 10; Fri. - Sat. 10 - 11 811 E. Main St., Mount Joy