

If You Don't Know Roofing

Know Your Roofer

RALPH F. KLINE, SR.

Roofing - Siding - Spouting

Competent Qualified Workman

Over 25 Years Experience

Mount Joy

653-5771

Ephrata

733-1224

Formerly of Lititz
The Original and Recommended Roofer



Ibberson's

CARPET FOR HOME & CAR

1660 S. MARKET ST.

ELIZABETHTOWN, PA. 17022

Open 9 to 5:30

Mon., Thurs., Fri. 9 to 9

Creative
Carpetry

GILBERT MOTORS

1974 CHEVY CAMARO
V-8 AUTO, PS, PB, 4
SPEED

1973 CHEVY IMPALA
2 DR., HT, V-8
AUTO., PS, PB, AIR

1973 PLYMOUTH
SATELLITE V-8,
AUTO., PS, PB

1971 PLYMOUTH
SATELLITE V-8,
AUTO., PS, PB.

1970 OLDS CUTLASS
V-8, AUTO., PS, PB

1970 PONTIAC LE-
MANS 2 DR., V-8.,
AUTO., PS, PB

1967 RAMBLER V-8, 2
DR., AUTO., PS, PB

Maytown, PA 426-3604

Anti-inflation seed and garden program

A state-wide seed program will be repeated this year under the title "The Anti-Inflationary Seed and Garden Program of Pennsylvania." The seeds are available to all residents of PA. Low and fixed income individuals especially are encouraged to participate in the program to reduce high food costs.

Across the nation, gardening is increasing in popularity. Locally, participation in the seed and garden program is also increasing. Last year seeds were distributed in Lancaster County to approximately 1,600 family units, an increase of 600 family units over the previous year. More participation is expected for this year, the third year of the program.

The program has many direct and indirect benefits. Not only does it provide fresh nutritious vegetables, but also indoor, healthy exercise. Gardening is a creative family activity as well as a means of lowering family food costs.

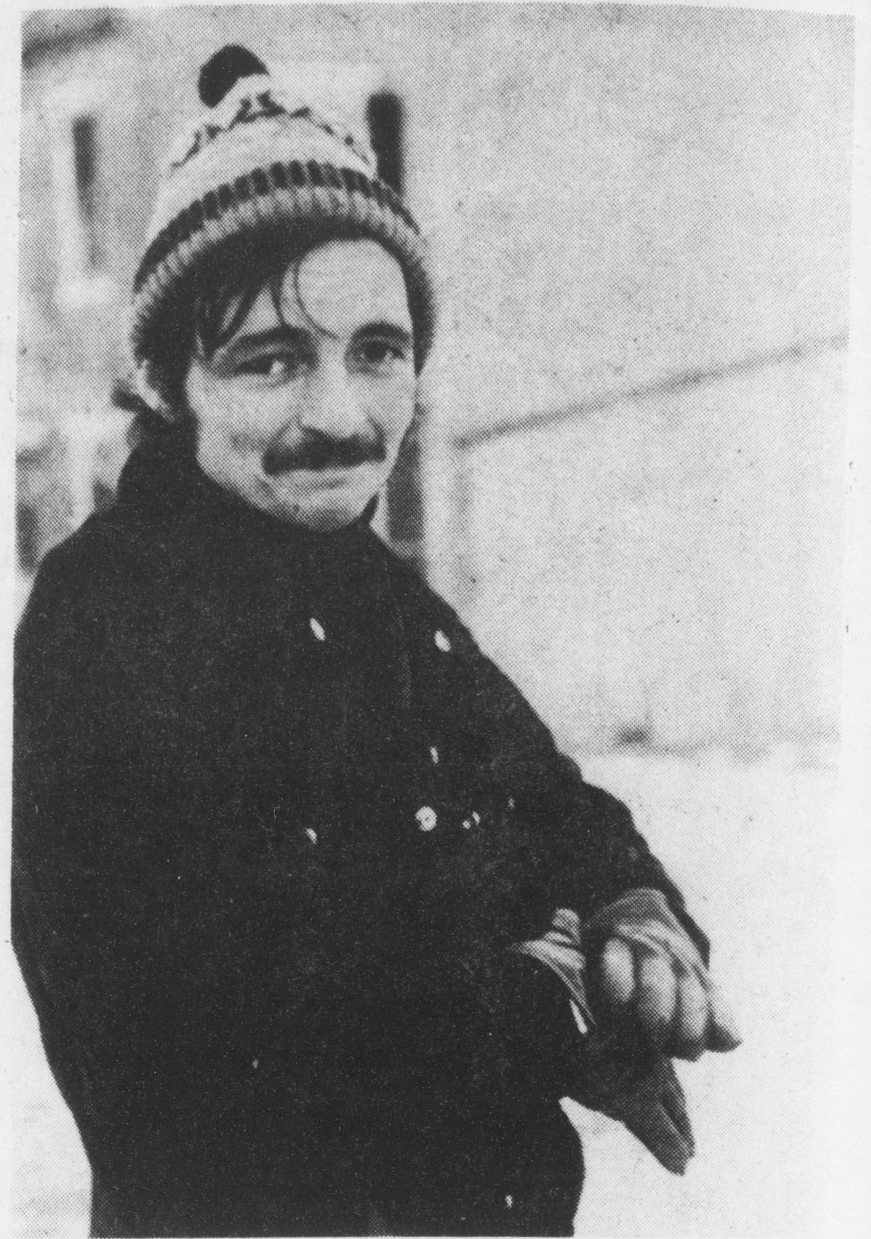
Each seed packet contains the following ten varieties:

Beans, Golden Wax-Yellow Bush; corn, Golden Bantam; carrots-Danver 1/2 long; radishes, Scarlet Globe; squash, Zucchini; lettuce, Grand Rapids; peas, Triple Treat; beets, Detroit Dark Red; turnips, Purple Top White Globe; cucumbers, Long Green.

The cost is 37c plus shipping per packet of ten varieties.

Agencies and groups are encouraged to request bulk orders for their clients and members. Individual orders are also accepted. Seed packets can be ordered by sending a written request including a stamped, self-addressed envelope to Ella M. Newswanger, Community Action Program, 630 Rockland Street, Lancaster, PA 17602. The self-addressed, stamped envelope will be used to contact persons when seeds arrive.

All orders must be in no later than January 20, 1977. The seed shipment is expected on or about March 15, 1977. All orders will need to be picked up at Community Action Program. Payment will be due upon receipt of seeds.



"If only I'd had my seismometer," said visiting geologist Ray Cheeseman on New Year's Day.

Noted geologist finds tremors in Marietta

Geologist Ray "Big Cheese" Cheeseman, of Roswell, New Mexico, predicted an earthquake in Marietta during a visit with *Susquehanna Times* editor Rick Bromer last week.

Mr. Cheeseman is one of the world's leading experts on North American potash deposits, but his credentials as an earthquake predictor are nonexistent, at best.

On the other hand, Cheeseman is a bona fide geologist.

At about midnight on New Year's Eve, Cheeseman thought he detected an earth tremor.

"The room is shaking!"

he shouted, leaping to his feet. At that instant, the whole room began to rock like a rudderless Zeppelin in a typhoon.

"Earthquake!" Cheeseman muttered, as the impact sent him sprawling to the buckling floor.

The next morning, the noted geologist admitted that he might have made a mistake.

"It was a totally unscientific, off-the-cuff sort of opinion," he allowed. "I just wish I had packed my seismometer. Then we'd have some hard evidence."

Mr. Cheeseman has detected earthquakes in many corners of the world over the last ten New Year's Eves.

Chance to complain

A Representative from the Lancaster City-County Human Relations Committee will sit at the following county locations four (4) times a year from 3:00 p.m. to 7:00 p.m., to hear complaints from citizens. (employment, education, housing, public accommodations, etc.)

The committee will sit at Elizabethtown Borough Hall on February 7; May 2; August 8 and November 3, 1977.

Also at Columbia Borough Hall on February 23; May 18; August 17 and November 16, 1977.

Services will be provided annually.

Union National Bank receives U.W. award

United Way of Lancaster County announced that Union National Bank of Mount Joy was the recipient of its 1976 campaign Bronze award for organizations accomplishing the most successful campaigns in the county-wide fund

drive for 38 local human service agencies.

The criterion for determining which award each organization qualified for was the percentage of employees participating in the campaign: the Bronze award is for 70 to 79 per cent.



Your Local
Insurance
Company

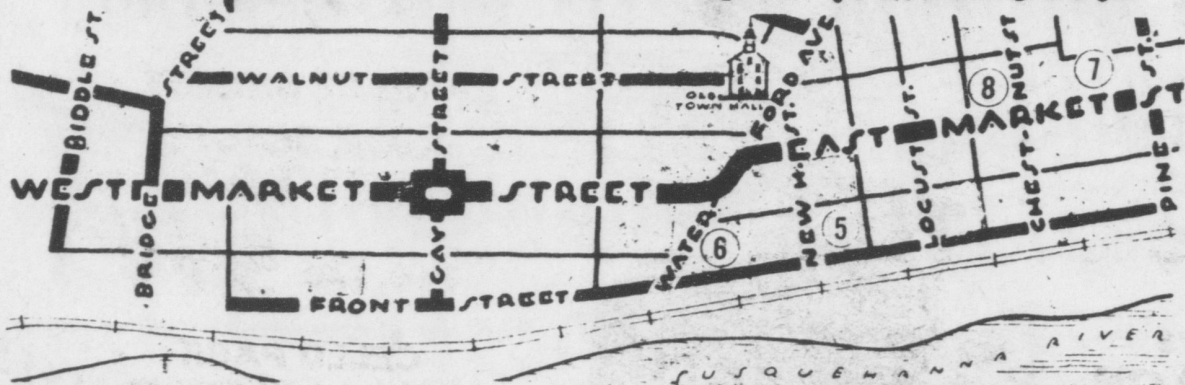
Supporting
a Local
Effort

Donegal Mutual Insurance Company

ROUTE no. 441 BY-PASS

MARIETTA, PENNSYLVANIA 17547

Antiques And Art In Marietta



**8. Henry & Jane
Schlosser Studio**

234 E. MARKET ST. [BY APP'T] - 426-2201
[Antique Toy Shop and Gallery now in
Intercourse, Pa. Route 340]

5. The Oliver House

104 E. FRONT - 426-3796
Fine Antiques, Crystal and China

**6. White Swan Tavern
Antiques**

14 E. FRONT - 426-2189
Clocks, Furniture and Accompaniments

7. "The Parlor"

328 E. MARKET - 426-1270
Antiques and Gifts