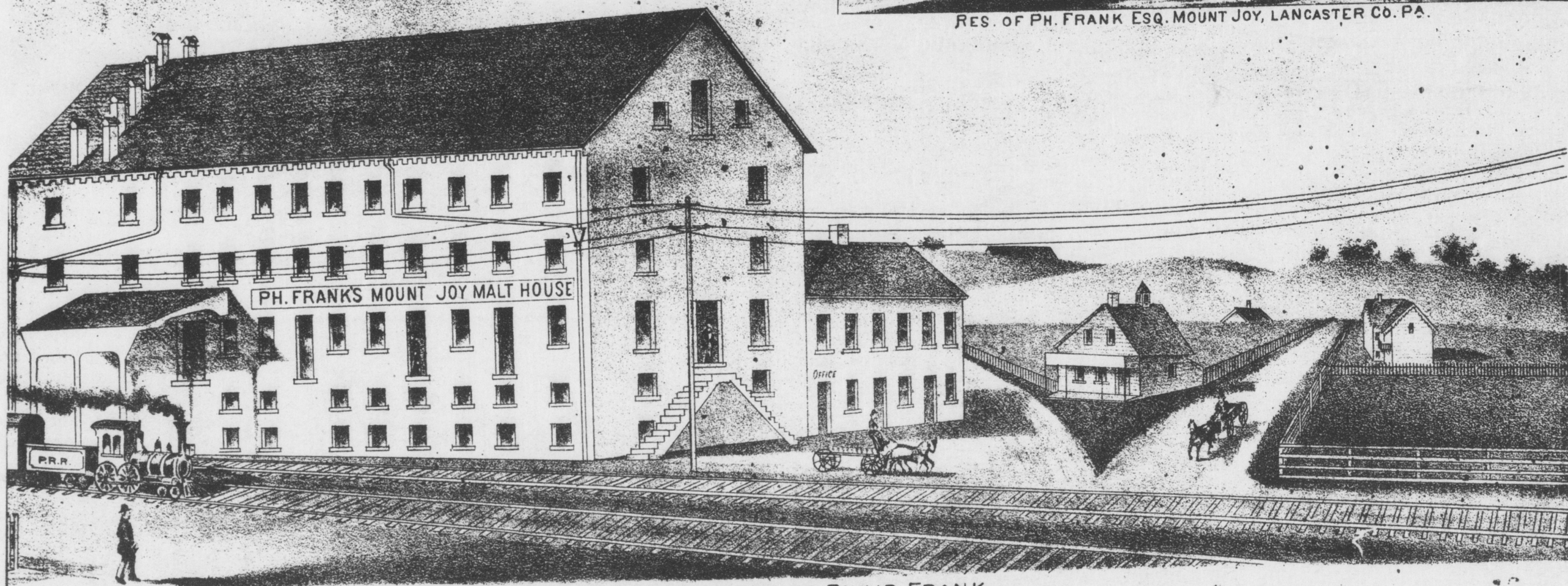
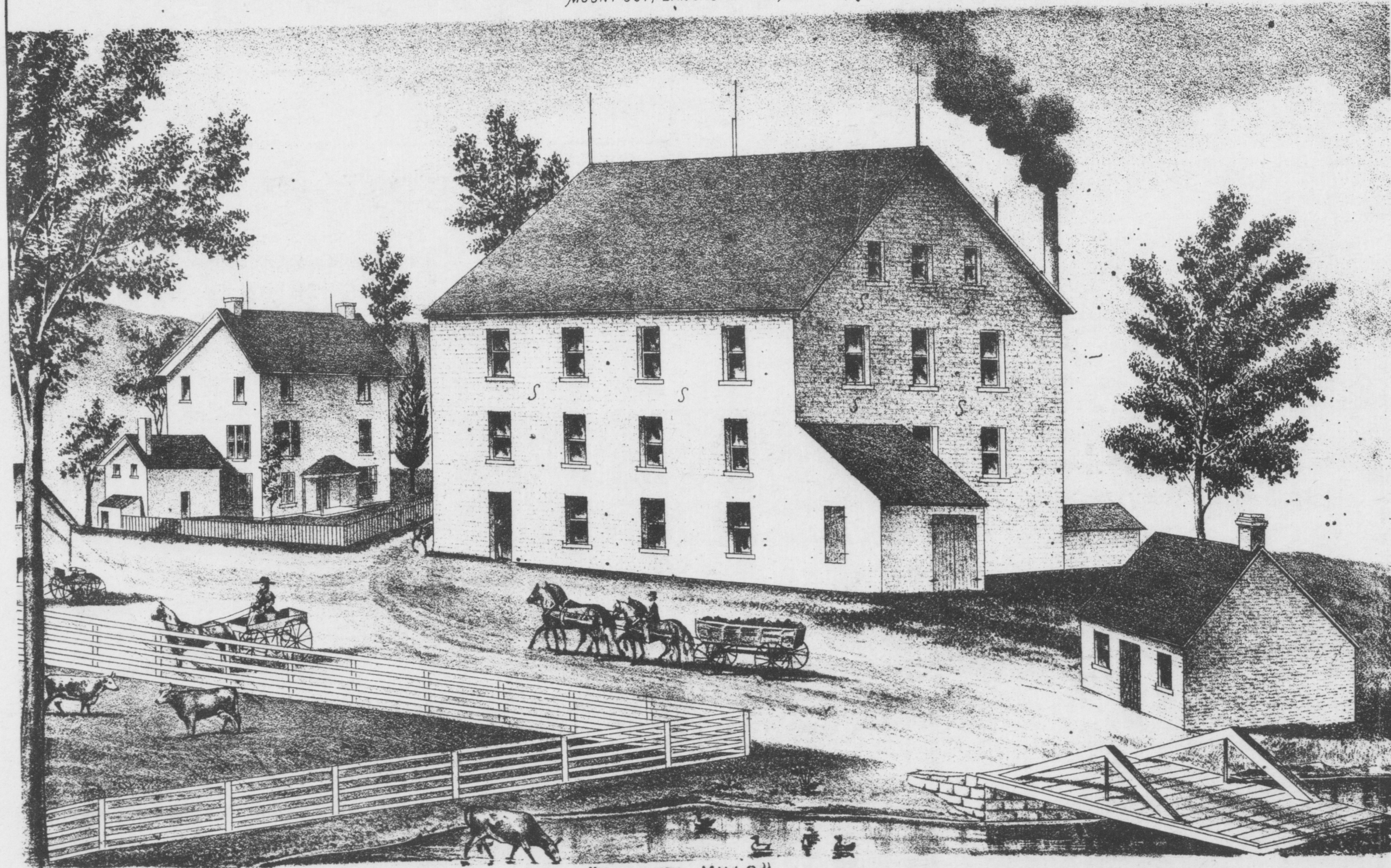


RES. OF PH. FRANK ESQ. MOUNT JOY, LANCASTER CO. PA.



RES. & MALT HOUSE OF PHILIP FRANK,
MOUNT JOY, LANCASTER CO PA.



"MARIETTA MILLS"
RES. AND MILL OF J.H. MUSSER ESQ. E. DEONEGAL TP. LANCASTER CO. PA.

Recognize these?

The pictures shown here are from the 1875 **Historical Atlas of Lancaster County, Pa.** by Everts and Stewart. The Atlas has recently been reproduced

from the original, owned by H. Clifford Kreisle, Lancaster, under the sponsorship of the Lancaster County Historical Society. The Atlas was printed by The

Bookmark, Knightstown, Indiana. Copies can be purchased through the Lancaster County Historical Society for \$16.50.

Maps and drawings from the Atlas will be reproduced in the **Susquehanna Times** as space permits. We are grateful to the Lancaster County Historical

Society for permission to reprint portions of the Atlas, and we congratulate the Society for making this Atlas available to the public.