

Births

Mr. and Mrs. Delbert Ellsworth (Mary Lou Holbrook) 7 Donegal Place, Marietta, a daughter at General Hospital, July 8.

Mr. and Mrs. Jack Loser (Donna Afton; 371 Chocolate Avenue, Apt. B, Mount Joy, a daughter at Osteopathic Hospital, July 10.

Mr. and Mrs. Jay Nace (Sharon Garber; 421 West Main Street, Mount Joy, a son at General Hospital, July 10.

Mr. and Mrs. William Nagle (Connie Corbin) 3 Henry Street, Mount Joy, a son at General Hospital, July 4.

PP&L wants regulation modified

The Susquehanna River Basin Commission was requested Thursday, July 8, to provide for power plants already under construction when it puts a low-flow regulation into effect for the river.

Pennsylvania Power & Light Company's vice president Engineering and Construction, Norman W. Curtis, testified at an SRBC hearing that PP&L is in favor of the proposed regulations, but if the regulation is not modified, it could result in shutdowns of the Susquehanna Steam Electric Station during times when the river is

below certain flow levels.

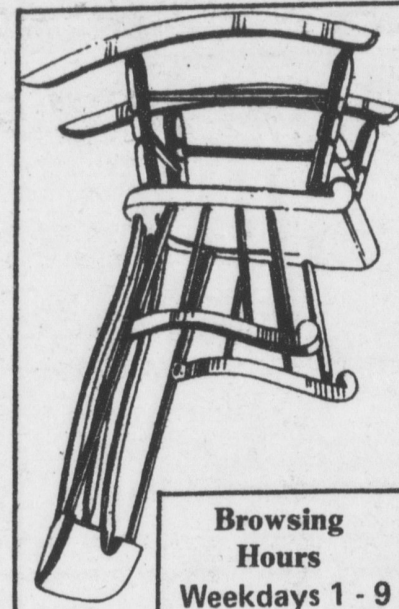
During the hearing in the Penn Ram Motor Inn, Camp Hill, Curtis reminded the commission that PP&L cannot construct a water reservoir in time for November, 1980, start-up of the station's Unit 1 because of the need for low-flow criteria on consumptive use of river water. Those criteria will be included in the proposed regulation. He had urged speedy action by the SRBC on the subject at another hearing earlier in the year.

Curtis said that if an exception were not made for the plant under construc-

tion, PP&L could lose 25 per cent of its capacity by untimely shutdowns of the plant, at a cost of \$1,200,000 per day to its customers.

Mark reunion

President Robert W. Mark announced the Mark Reunion will be held at Sico Park, July 25, 1976 at 10 a.m. to 6 p.m. Bring a covered dish, there will be entertainment.



Browsing Hours
Weekdays 1 - 9
Saturday 1 - 6

I haul cancelled store orders, odd discontinued styles and show samples from Carolina factories.
NO SECONDS.
Prices are just above nice used things.
Orders for regular production furniture hauled at a saving.

Tom Swope
TRUCKER
OF FACTORY FRESH
FURNITURE
17 New Haven St., Mt. Joy

A LIMITED SERVICE WAREHOUSE OUTLET

PUBLIC SALE

WEDNESDAY, JULY 28
& THURSDAY, JULY 29
At 5:30 p.m. Prompt
Bainbridge, PA

(Bainbridge is on route 441 midway between Marietta and Middletown)

METAL AND WOODWORKING EQUIPMENT, TOOL AND OFFICE EQUIPMENT, HOUSEHOLD AND ANTIQUE ITEMS

Wednesday at 5:30 P.M.

(2) Buda diesel engines, 4 cyl. diesel generator 20 KVA Buda, WINCO 3000 watt generator, quarry stone, driller and bits, portable motorized cement mixer, small cement mixer, (2) 1/2 ton chain hoists, (1) electric, high capacity hydraulic jack, hydraulic garage jack, hydraulic press, geared head motors (new & used), various size electric motors, Shramm air compressor, 2 cyl. air compressor, air drill, air nozzle, new Air motors, air control gauge boiler and water separator, Devalt radial arm saw, 30" band saw, Rockwell shafer atlas disc and belt sander, 24" Delta jig saw, 4" craftsman jointer (2) Craftsman table saws, (2) Shopmaster 12" band saws, bench vises, (3) chain saws, 9", South Bend lathe, Century sabre saws (2) paint spray guns, (1) electro engineering airless) Battery operated drill with charger, 3/4" Speedway drill, 1/4" B&D Drill, 1/4" Snap-on drill, 1/2" Skill disc sander, (2) 9" metal lathes - new South Bend, bench grinder, power hack saw, (2) 15" champion drill presses, small rolling mill, Delta carbide-tool grinder, Kalamazoo metal cutting band saw, metal lathe tools, flexible shafts, new drill rod, new 17" Delta commercial drill press, Arc welder, spot welder, Hobart welder, a complete line of tools, gauges and supplies used in a machine shop-many electrical supplies, micro-switches, transformer, battery charger, kegs of nails, copper tubing, ball bearing plow blocks, brass fittings, pulleys, large coil stainless steel wire and many more items.

Thursday at 5:30 P.M.

Antiques

MODEL "A" FORD ENGINE (new in crate), flour chest, dry sink, pot belly stoves, wood burning range, 17th century Rush lamp, double arm fat lamp, book binding press, sausage stuffer, hearth waffle iron, wood plane plank, large anvil, old Lancaster Square picture, fine arms, etc.

Household Items

New electric griddles, ovens, broilers, fry pans, knives, Frigidaire refrigerator, old milk can, etc.

Office Equipment

Monroe calculators, adding machines, desk, (2) metal cabinets, filing cabinets, transcriber dictaphone, check writer, etc.

Farm Equipment

FORD TRACTOR and BACKHOE (used 65 hrs.), new tarpaulins, rolls of fencing, 2 wheel trailer, platform scales, cultivator, fertilizer spreader, plows sickle bar attach for tractor, Buhr - Stone grain grinding mill, Toro well jet pump, shallow sell pump, propane torches, camper heaters, etc.

SALE BY
ALINE DeVITRY and
HAROLD H. BORTHWICK EXORS
of the PIERRE DeVITRY ESTATE
WINDOLPH, BURKHOLDER, STANTON
ATTYS.

WALTER A. SMITH, JR. AUCTIONER

BALD or THINNING?



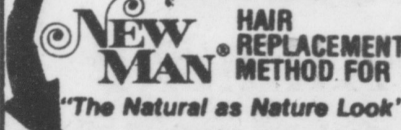
Now exclusively from your NEW MAN® Barber-Stylist you can have...

"THE NATURAL AS NATURE LOOK"!

You'll look your best confidently with a full and 100% natural appearing head of hair when you choose the exciting NEW MAN "Natural as Nature Look" hair replacement method. Your professional NEW MAN Barber-Stylist makes it happen! He'll show you how the NEW MAN honest approach to hair loss frees men from worry. YOU CAN PLAY ALL SPORTS, SLEEP AND SWIM WITH COMPLETE SECURITY. Make your move! Meet the man who can give you the natural appearance you really want ... your expert NEW MAN Barber-Stylist!

Get full information TODAY!

Send Coupon, Phone or Visit to Discover...



MAN'S WORLD

BARBER SALON

2 W. Orange St.

Lancaster

Ph. 394-0641

S.T.

Tell me how I can have a 100% natural appearing head of hair with NEW MAN.

Name _____

Street _____

City _____

State _____ Zip _____

Phone _____

©1975 Allen Arthur, Inc. NEW MAN is a registered trademark of Allen Arthur, Inc.

FREE CONSULTATION • SEND NOW!



Refreshing Summer Treats



Russell Stover Candies

Sloan's Pharmacy

61 EAST MAIN ST. MOUNT JOY

653-4001