

## Gloria Longenecker sings for Farm Women #9

by Hazel Baker

Gloria Longenecker, Miss Lancaster County, was guest entertainer for the Society of Farm Women #9 at Donegal Presbyterian Church Saturday afternoon.

Gloria's vocal solo included "Sing a Song," "One Hand—One Heart," "Somewhere Just Beyond Tomorrow," and "Impossible Dream." Her flute solo was entitled "Dancing Dell."

She was accompanied by her sister, Mrs. Glenn Weaver, who presented a piano solo "Hungary."

In her final two numbers, Miss Longenecker sang impressions of a chamber maid, by Strauss, and Flavia Tosca from Vissi D'arte.

Mrs. Lewis Bixler conducted the business session. She appointed an auditing committee of Mrs. Harold Drager and Mrs. Harold Frey. Mrs. Clyde Wivell volunteered to assist with Heart Screening Day.

Mrs. Warren Heisey, Mrs. Paul Erb and Mrs. Ruth Eby gave a report on the state convention of Farm Women.

Mrs. Paul Witman was

presented the red, white and blue centerpiece of spring flowers on the occasion of her twenty-fifth wedding anniversary. Hostesses for the session were Phyllis Endelow, Grace Bixler, Elizabeth Witmer and Minnie Eulp.

Refreshments were brought by members attending.

President Bixler opened the meeting by reading the scriptures and Bicentennial quotations. The group sang the "Battle Hymn of the Republic" and "America."

The next meeting will be

held at the home of the Misses Ruth and Anna Mae Eby. Ruth Eby will speak on dolls. Co-hostesses will be Alice Myers, Mary Schaefer and Lizzie Houser.

Elsie Longenecker is a graduate of Donegal High School and is attending Lebanon Valley College where she is majoring in music. She has the female lead in the spring musical "Irene."

Gloria Longenecker, the reigning Miss Lancaster County, will sing at the Lancaster Farm and Home Foundation dinner at the Farm and Home Center, Jan. 29.



Gloria sings to the piano accompaniment of her sister, Mrs. Glenn Weaver.

## Mrs. P. Duval is on board

Mrs. Paul Duval of Mount Joy R.D. #1, was elected to the board of the Visiting Nurse Association at last week's meeting in Lancaster.

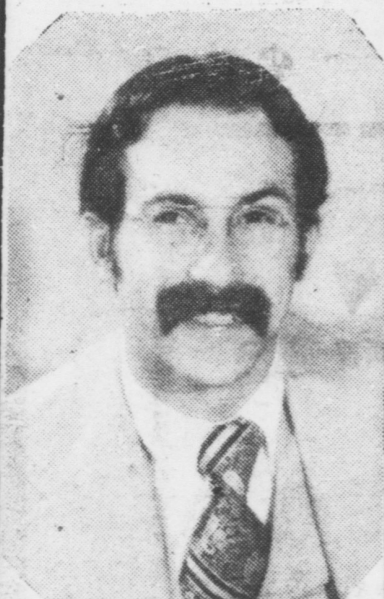
Mrs. Duval has been "extremely active in civic activities," a VNA spokesman said.

### DID YOU HEAR....

Eight of our local Donegal Rangers traveled to South Carolina last week-end to fight the Battle of Cowpens. They won a decisive victory for the American forces—just like the one headed by Daniel Morgan in 1781.

**"A parked car is less apt to hit something."**

People who are driving less these days should pay less for their insurance. See me for details.



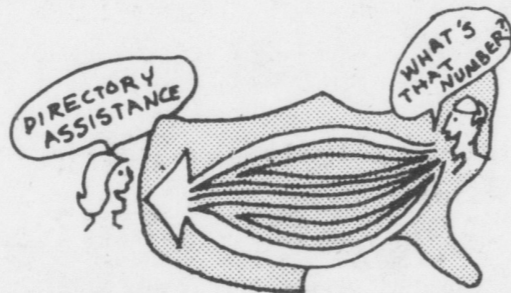
**ALEX JUST**

74 E. Main Street  
Mount Joy, Pa.  
PHONE 653-2212

Like a good neighbor,  
State Farm  
is there.



STATE FARM MUTUAL  
AUTOMOBILE INSURANCE COMPANY  
Farm City, Illinois



# 5 more ways to Save on your phone bill (Part 3)

**11.** You know dialing direct is the least expensive way. But what if you don't know the number in that distant city? Simply dial the area code (if required) and 555-1212 for directory assistance. A listing of all area codes can be found in the front of your telephone directory. Save yourself some time later on by recording the new number in a personal number book.

**12.** Know when direct dialing rates apply. They apply on all calls out of the state to anywhere in the United States (except Alaska) if completed from a residence or business phone without the aid of an operator.

**13.** It's even more important to know the circumstances when direct-dial rates do NOT apply. They do not apply on person-to-person, hotel-guest, credit card or collect calls, or on calls charged to another number, because an operator must assist on such calls. Direct-dial rates do not apply on calls made from coin phones.

**14.** While operator-handled calls cost you more than those you dial yourself, there is one exception. If you run into equipment trouble completing a Long Distance call you're dialing yourself from a home or business phone, you're still eligible for the dial-direct rate even if you require an operator's assistance. Call an operator and explain your problem to her. If you need help in getting the call through, or in making a satisfactory connection, confirm with the operator that it will be charged at the dial-direct rate.

**15.** Dial direct, but save even more by making your long distance calls within the time periods when rates are lowest. The lower rates for long distance made in the evening, on the weekends or late at night are described for you in the call guide in the front of your telephone directory.



*This advertisement is another in a series of helpful and cost saving tips from your United Telephone Company to help you save money. (And everyone knows saving money is not easy these days).*



THE UNITED TELEPHONE  
COMPANY OF PENNSYLVANIA

A Company of United Telecommunications, Inc.