

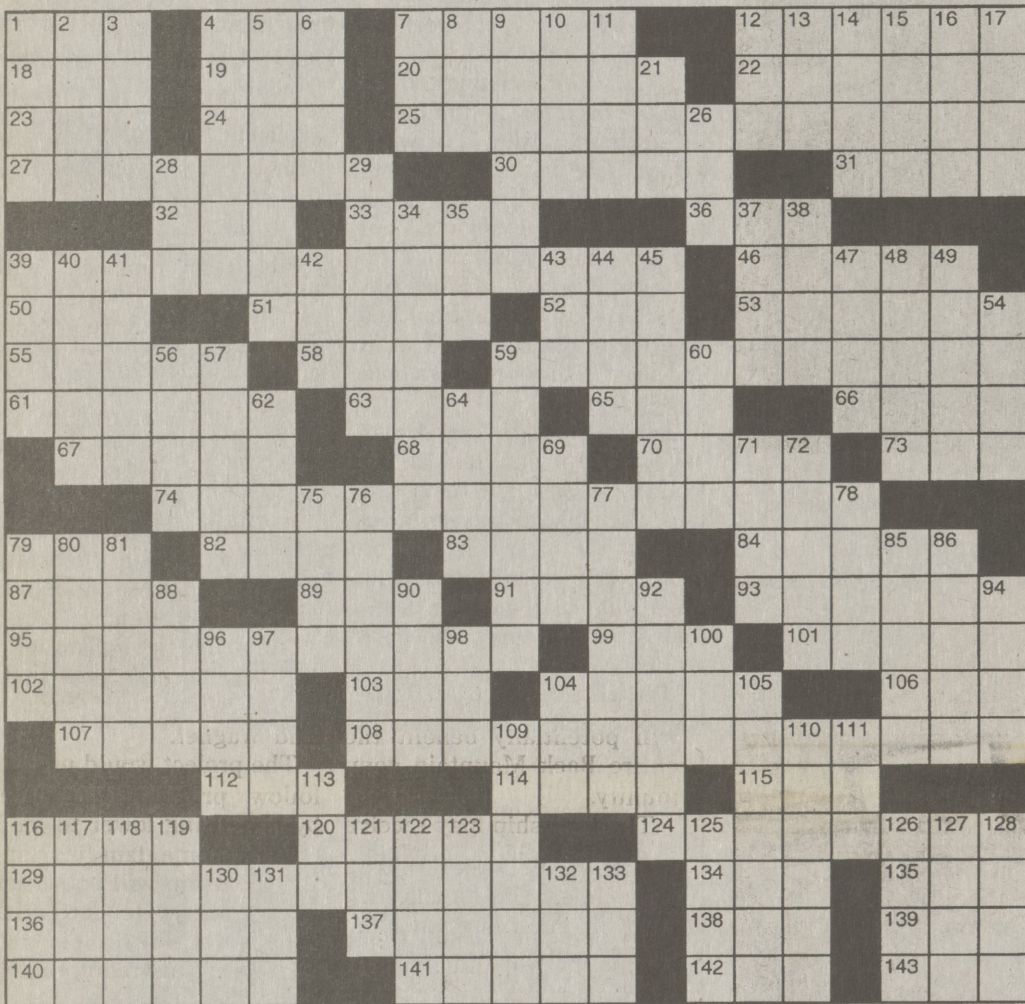
CROSSWORD CORNER

Puzzle answers, Page 11

Super Crossword

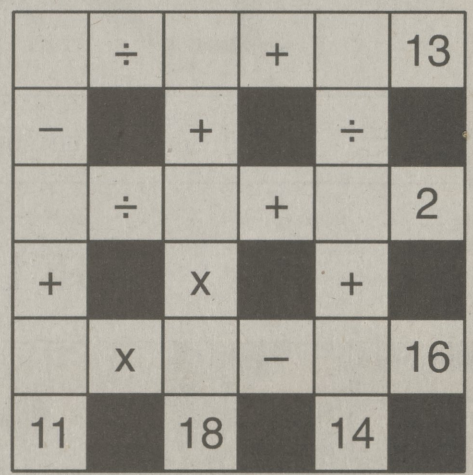
BELONGINGS

- ACROSS 1 Use a calculator 4 Cartographer's creation 7 Actress Sonia 12 "Dancing" (78 smash) 18 Payable 19 Bristol brew 20 Abuse 22 Puget Sound city 23 Mimic 24 Tub 25 Sarah Miles movie 27 Ruehl of "The Fisher King" 30 Muldoon's partner 31 Itches 32 Remnant 33 Southwest-ern sight 36 Start to snooze 39 Anne Nichols play 46 Existed 50 Japanese honorific 51 Nick of 130 Down 52 Zlich 53 '90 Barry Levinson film 55 Style 58 "the fields we go..." 108 Liam Neeson film 112 Make a muumuu 114 Ruminant 115 "The truth at last!" 116 New York stadium 120 Cornerstone abbr. 124 "David Copperfield" character 129 Saul Bellow novel 134 Pirate's quaff 135 Hubbub 136 Estefan or Estevez 137 Painted poorly 138 Slangy suffix 139 Brink 140 Just 141 Philharmonic section 142 Opera's Merriman 143 Essential DOWN 1 Eliot's "Bede" 2 Con 3 "Bambi" extras 4 Experts 5 Lamp lad 6 "Our Gang" canine 7 "It's freezing!" 8 Bandleader Alvino 9 Incarnation 10 Marchetti of football 11 In addition 12 R-V hookup? 13 Crone 14 "Breaky Heart" ('92 hit) 15 Make too much of 16 Portent 17 Fights 21 "Kookie" Byrnes 26 Writer Rand 28 Artichoke heart? 29 Shows one's teeth 34 "ChiPs" star 35 Cow or sow 37 Norwegian saint 38 Prima donna 39 Actress Nielsen 40 Fishhook parts 41 Sluggish 42 Milne creature 43 — roll 44 Airhead 45 May or Stritch 47 Siren 48 Architect Saarinen 49 "La — Vita" ('60 film) 54 AMEX rival 56 Linguist Chomsky 57 — Lama War site 59 — Hill (Civil War site) 60 Corset part 62 Earl — Biggers 64 Spurt 69 Benito's bread 71 Flat hats 72 Idle and Severeid 75 After-bath powder 76 "Gimme five!" and "Aloha!" 77 Mythological swimmers 78 Sketch 79 Wear out the carpet 80 — garde 81 Lenya or Lehmann 85 Roman fountain 86 Underworld 88 Impact sound 90 Comice kin 92 Symbol 94 Exemplar of redness 96 Puppy protests 97 — gin fizz 98 Presidential monogram 100 Place-kicker's prop 104 Wildebeest 105 Blood count? 109 Exercise the elbow 110 Witch doctor 111 Frankfurter's field 113 Marry 116 Noah's eldest 117 Scottish philosopher 118 Kuwait ruler 119 Competent 121 Part of EST 122 Peter or Ivan 123 Malarial fever 125 Rock's — Butterfly 126 Conifer covering 127 Singer Adams 128 Actress Schneider 130 "Lorenzo's —" ('92 film) 131 Powell co-star 132 Nourished 133 QB's stats



GO FIGURE! by Linda Thistle

The idea of Go Figure is to arrive at the figures given at the bottom and right-hand columns of the diagram by following the arithmetic signs in the order they are given (that is, from left to right and top to bottom). Use only the numbers below the diagram to complete its blank squares and use each of the nine numbers only once.



DIFFICULTY: ★★

★ Moderate ★★ Difficult ★★★ GO FIGURE!

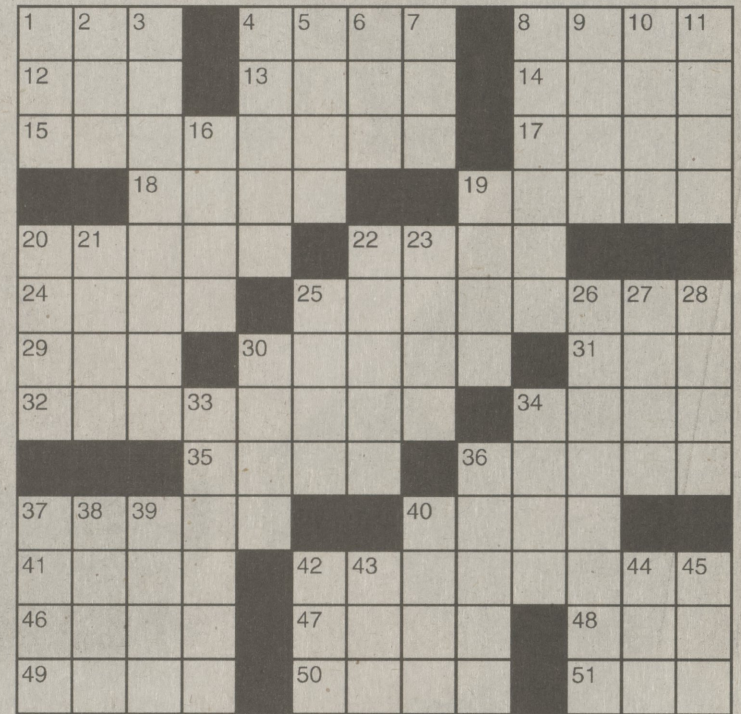
1 2 3 4 4 5 7 8 9

© 2010 King Features Syndicate, Inc.

King Crossword

ACROSS

- 1 Curved line 4 Sheltered 8 Use as an example 12 "Phooey!" 13 Folder's locale 14 Hebrew month 15 Workers' jargon 17 "West Side Story" gang 18 Loading site 19 Friars Club event 20 Shocking weapon 22 False god 24 Responsibility



- 25 Accelerator 29 Inseparable 30 Suggest as a theory 31 Bat stat 32 Company's promotional souvenir, often 34 Versifier 35 Smacks 36 Profundity 37 Wild 40 High point 41 Racetrack shape 42 Curbside octagon 46 Krupa or Simmons 47 Woody's son 48 One of the brass (Abbr.) 49 Fit of peevishness 50 Beer ingredient 51 Trivia whiz Jennings

- 7 "A mouse!" 8 Wheedle 9 Thought 10 Body art works, for short 11 Once, old-style 16 Slapstick arsenal 19 Engrossed 20 Snatched 21 Actress Hathaway 22 Foundation 23 A — apple 25 Capricorn 26 Gridiron ploy wing

- 27 Help a hood 28 Rock (Suff.) 30 Dr. McGraw 33 Home in the Alps 34 Carrots' mates 36 Station 37 Clouds (up) 38 Squared 39 Hindu princess 40 Survey 42 Muppet eagle 43 La-la lead-in 44 "Gosh!" 45 — compos mentis

Child prodigy presents holiday concert

Rhema Marvanne, an 8-year-old angelic-voiced child prodigy, will present her "Capturing the Spirit of Christmas and Life" concert at 7:30 p.m. on Monday, Nov. 29 in Lemmond Theater in Walsh Hall on the campus of Misericordia University.

Marvanne became an instant sensation on YouTube when her rendition of "Amazing Grace" went viral with more than five million views. Since then, she has recorded two studio albums, including "All Seasons," which was released October 15 and includes a new orchestrated version of "Amazing Grace" and six other songs.

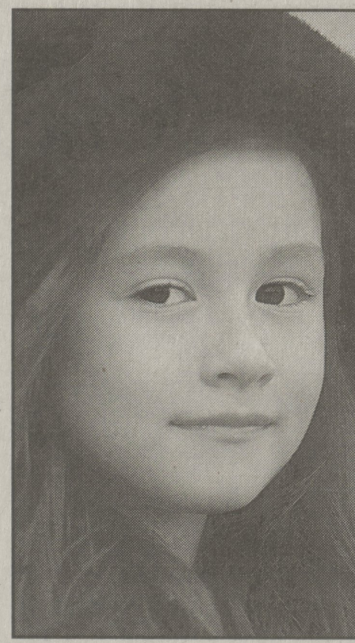
will perform songs like "O Holy Night," "Silent Night," "First Noel," "I Love the Lord," "Note to God," "Lord's Prayer" and "Jesus Loves Me" during her concert at Misericordia.

Marvanne's recent album, the self-titled, "Rhema Marvanne," included the hits "The Prayer," and "I Love the Lord."

The debut CD launched her professional career and her latest release has her scheduled to appear on ABC's "20/20," ABC Family's Christian Broadcast Network and in front of more than 100,000 people as she performs, "The Star Spangled Banner" at Fort Hood Army Base. Gospel singing is Rhema's min-

istry, but she receives inspiration from her late mother, Wendi Marvanne who died after a lengthy battle with ovarian cancer in 2008. Today, she is a singer and servant of God whose mission is to spread the word of God through her performances at churches, non-profit organizations, charities, hospitals and special events.

General admission tickets for Marvanne's "Capturing the Spirit of Christmas and Life" concert at Misericordia University are \$15 and \$5 for students and may be purchased by calling the Misericordia University Box Office at 674-6719.



MARVANNE

DUI checkpoints will affect motorists in Kingston Twp.

DUI checkpoints are scheduled to take place this Thanksgiving holiday. Area police will watch for drivers displaying unsafe behaviors on the roads of Luzerne County.

Checkpoints and roving patrols are scheduled the week of November 22-28 in the borough of Courtdale and the townships of Kingston, Wright, Plains and Hanover.

The Luzerne County Sobriety Checkpoint Program is administered through Catholic

Social Services with funding provided by the Pennsylvania Department of Transportation (PennDOT).

Police officers will be out in force to enhance public safety during the holiday season and remind the motoring public of the dangers of drinking and driving.

For more information, contact Charles Rauschkolb, Checkpoint Program Coordinator at Catholic Social Services, at 406-0942.

NEWS

Coverage Area: The Dallas Post covers the Back Mountain community which includes the Dallas and Lake-Lehman school districts. We try to get to as many events as possible, but staff and space limitations make it impossible to cover everything. If you have news about your family, town, or organization, please send it to us and we'll try to get it in. Photographs are welcome. You may send items two ways: by mail to 15 N. Main St., Wilkes-Barre, 18711 or by e-mail to news@mydallaspost.com. E-mail is the best and most timely method for submissions. E-mailed photos must be sent in JPEG format with a resolution of at least 200 dpi. The deadline for all copy is 10 a.m. Wednesday prior to publication.

Corrections, clarifications: The Dallas Post will correct errors of fact or clarify any misunderstandings. Call 970-7440.

Have a story idea? Please call, we'd like to hear about it.

Letters: The Dallas Post prints letters of local interest. Send letters to: Editor, The Dallas Post, 15 N. Main St., Wilkes-Barre PA 18711. All letters must be signed and include a daytime phone number for verification.

The Dallas Post

THE TIMES LEADER Community Newspaper Group

15 N. MAIN ST., WILKES-BARRE, PA 18711 • 570-675-5211 news@mydallaspost.com • FAX: 570-675-3650

(ISSN-1551-1650) USPS 147720

ADVERTISING

Display Advertising Deadline: Tuesdays at 12 noon.

Call: Tammy Holena (570) 970-7291

The Dallas Post has a variety of advertising rates and programs.

The Dallas Post satisfies most co-op ad programs. Offers creative services at no charge.

Combination rates with The Abington Journal, Clarks Summit, and the Sunday Dispatch, Pittston available.

WANT A PHOTO?

You can now purchase any photo that appears in the Dallas Post from The Times Leader Photo Store. Simply log onto www.timesleader.com/photostore and click on the link for the Dallas Post.

CIRCULATION

Orders for subscriptions received by Friday at noon will begin the following week. Please inform us of damage or delay, call 829-5000. The Dallas Post is published weekly by Wilkes-Barre Publishing Company. \$20 per year in Luzerne and Wyoming counties (PA), \$24 in NY, NY and all other PA counties, \$27 all other states. Call 829-5000 for rates to other areas.

Periodicals postage paid at Wilkes-Barre, PA 18701-9998

POSTMASTER: Send address changes to The Dallas Post, 15 N. Main St., Wilkes-Barre PA 18711