

CROSSWORD CORNER

Super Crossword FRIENDLY

Puzzle answers, Page 13

- ACROSS**  
 1 Balaam's beast  
 4 Spud  
 9 Passing fashions  
 13 Swerve  
 17 "Mighty \_\_\_ a Rose"  
 18 Physicist Joliot-Curie  
 19 Flick  
 20 Correctional  
 22 Start of a remark by Milton Berle  
 24 Where Devils fight Flames  
 25 Musical of "Tomorrow"  
 26 Swit co-star  
 27 They may be frozen  
 29 Dweeb  
 31 "Born in the \_\_\_" ('84 hit)  
 32 Neat as \_\_\_  
 34 Part 2 of remark  
 38 Jeopardize  
 42 Fairy-tale start  
 43 Base stuff?  
 44 TV's "The Squad"  
 45 Johnson of "Brief Encounter"  
 47 Rainbow shape  
 49 Where to find edelweiss
- 52 Shopper's Shangri-la  
 54 Napoleon's cousin  
 57 Quilled critter  
 61 Winning  
 63 Winner  
 64 Altar  
 65 Actor answer  
 66 Adroit  
 68 Velvety plant  
 70 Theater section  
 72 DC figure  
 73 Dental appointment, for some  
 76 Part 3 of remark  
 78 Circular, e.g.  
 80 For each  
 81 Tibetan monk  
 83 Ceremony  
 84 Conceal  
 85 Sedan season  
 86 Maglie of baseball  
 87 Crete's capital  
 89 Beardless dwarf  
 93 "A Christmas Carol" name  
 96 Cocktail ingredient
- 97 Breaker  
 98 "Kismet" character  
 99 Bit part in "Cleopatra"  
 101 Mythical weeper  
 104 Pan Alley  
 105 Spellbound  
 108 Word with candy or copy  
 111 Labors  
 113 Part 4 of remark  
 118 Connecticut campus  
 119 USN rank  
 120 Leave  
 121 San Luis, CA  
 124 "Them!" critters  
 127 Actor Christopher  
 130 Incited, with "on"  
 132 End of remark  
 134 Designer Donna  
 135 Card or bill  
 136 Mrs. Ethan Frome  
 137 Kauai keepsake  
 138 Lovett or Waggoner  
 139 "Eat your dinner \_\_\_ dessert!"  
 140 "Rawhide" role
- 141 Fashion monogram  
 ridge  
 38 Madame Bovary  
 39 Wyle of "ER"  
 40 Choose  
 41 Loaded  
 46 Battle site of 1836  
 48 Prepare the champagne  
 50 Part of a process  
 51 Dignified  
 53 Stow  
 55 "\_\_\_-propre" (self-esteem)  
 56 Massachusetts town  
 58 Tokyo, formerly  
 59 Cowboy's critter  
 60 Fellow  
 62 Distribute the deck  
 67 Instant  
 69 Indian lute  
 71 Writer  
 73 Crude cartel  
 74 Fashionably nostalgic  
 75 Night vision?  
 76 "Big Three" site  
 77 October Revolution name  
 79 Deliberate  
 82 \_\_\_ tai (rum cocktail)
- 84 Mist  
 88 Give off  
 90 Without complaining  
 91 Sinister  
 92 Desires  
 94 Skater  
 95 Grouch  
 96 Petty clash?  
 100 '65 Jr.  
 Walker & the All Stars hit  
 102 New Jersey city  
 103 \_\_\_ Marie Saint  
 106 Raven maven?  
 107 Prom wear  
 109 \_\_\_ Island  
 110 Society miss  
 112 Sitka's st.  
 113 Escapade  
 114 Perfect  
 115 Abrasive substance  
 116 \_\_\_ lily  
 117 Posh  
 122 Queens stadium  
 123 Artist  
 125 Stocking stuffers?  
 126 Besmirch  
 128 Actor Kilmer  
 129 Compass pt.  
 131 Author Umberto  
 133 Helium or hydrogen

GO FIGURE! by Linda Thistle

The idea of Go Figure is to arrive at the figures given at the bottom and right-hand columns of the diagram by following the arithmetic signs in the order they are given (that is, from left to right and top to bottom). Use only the numbers below the diagram to complete its blank squares and use each of the nine numbers only once.

|    |   |    |   |    |    |
|----|---|----|---|----|----|
|    | X |    | + |    | 15 |
| +  |   | ÷  |   | -  |    |
|    | ÷ |    | + |    | 11 |
| X  |   | X  |   | X  |    |
|    | X |    | - |    | 19 |
| 27 |   | 24 |   | 10 |    |

DIFFICULTY: ★★

★ Moderate ★★ Difficult  
 ★★★ GO FIGURE!

1 2 3 5 6 7 8 8 9

© 2010 King Features Syndicate, Inc.

King Crossword

ACROSS

- 1 Burden  
 5 Tulip, at first  
 9 Wildebeest  
 12 Crumbly cheese  
 13 Screenwriter James  
 14 Erstwhile acorn  
 15 Is unhappy  
 17 Prior night  
 18 Salver  
 19 Firetruck gear  
 21 Memory units  
 24 Bob's "Road" co-star  
 25 Stentorian  
 26 Book before Ecclesiastes  
 30 Blunder  
 31 Ralph of "The Waltons"  
 32 Mound stat  
 33 They drill and fill  
 35 Squad  
 36 Deadly septet  
 37 Treasury  
 38 Carried on  
 40 Ski lift type  
 42 "Ben- \_\_\_"  
 43 Angry  
 48 Coach Parseghian  
 49 Elliptical  
 50 Tittle

|    |    |    |    |    |    |    |    |    |    |    |    |
|----|----|----|----|----|----|----|----|----|----|----|----|
| 1  | 2  | 3  | 4  | 5  | 6  | 7  | 8  | 9  | 10 | 11 |    |
| 12 |    |    |    | 13 |    |    |    |    | 14 |    |    |
| 15 |    |    |    | 16 |    |    |    |    | 17 |    |    |
|    |    |    | 18 |    |    |    | 19 | 20 |    |    |    |
| 21 | 22 | 23 |    |    |    | 24 |    |    |    |    |    |
| 25 |    |    |    | 26 | 27 |    |    |    | 28 | 29 |    |
| 30 |    |    |    | 31 |    |    |    |    | 32 |    |    |
| 33 |    |    | 34 |    |    |    |    | 35 |    |    |    |
|    |    |    | 36 |    |    |    | 37 |    |    |    |    |
| 38 | 39 |    |    |    | 40 | 41 |    |    |    |    |    |
| 42 |    |    |    | 43 | 44 |    |    |    | 45 | 46 | 47 |
| 48 |    |    |    | 49 |    |    |    | 50 |    |    |    |
| 51 |    |    |    | 52 |    |    |    | 53 |    |    |    |

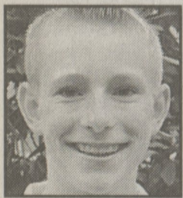
- 51 Has permis  
 sion  
 52 Leaf gatherer  
 53 Out of bounds  
 9 Becomes (discount store)  
 eco-friendly  
 10 Church area  
 11 Guitars' kin  
 16 Former jrs.  
 20 Indivisible  
 21 Evidenced a cut  
 22 Days gone by  
 23 Ages, maybe  
 24 Automotons, for short  
 26 Bridge  
 27 Fabric-dye brand  
 28 Pitt or Paisley  
 29 \_\_\_ Club  
 31 With 34-Down, broad neckwear  
 34 See 31-Down  
 35 Bombastic  
 37 Enthusiast  
 38 "Pow!"  
 39 Emanation  
 40 Ship-build ing wood  
 41 Ill will  
 44 Actress Mendes  
 45 Shad product  
 46 Greek vowel  
 47 Pop

PEOPLE BRIEFS

Andrew Levandoski awarded scholarship

Andrew Levandoski, of Dallas, has been awarded a Henderson Scholarship by Wyoming Seminary.

The Henderson Scholarship, now in its 14th year, is awarded annually to two Sem Lower School eighth-grade students who go on to the Upper School and who exhibit characteristics of academic



Levandoski

achievement, community leadership, high performance and superior communication skills.

The son of Gerald and Diane Levandoski, Levandoski graduated from Wyoming Seminary Lower School in May.

He was a member of the cross-country team and the jazz band where he played the piano, saxophone and clarinet.

He also was active on the MathCounts team and enjoys swimming, art lessons and piano lessons.

Dr. Stair is honored by Wilkes

Mark Stair, V.M.D., of Trucks-

ville, was one of five alumni honored by Wilkes University during its Health Sciences Distinguished Service Awards at the Biology, Chemistry, and Health Sciences reception on Oct. 2, during Homecoming 2010.

Stair is a 1970 Wilkes graduate and full-time practicing veterinarian in Trucksville. He was the recipient of The Best of the Back Mountain Vet Award two years in a row.

He provides care to the Luzerne County Society for the Prevention of Cruelty to Animals and other humane groups in the area. He also participates in pre-med day at Wilkes and allows pre-vet students to shadow him at his practice.

THIS WEEK'S MEETINGS

MONDAY, OCT. 18

**Lake-Lehman School District**  
 Old Route 115, Lehman  
 The school board will have its regular meeting at 7 p.m. in the junior/senior high school library.

**Lehman Township**  
 1183 Old Route 115, Lehman  
 The supervisors will meet at 7 p.m. in the municipal building.

**Dallas Borough**  
 25 Main St., Dallas  
 Council will hold a work session meeting at 7 p.m. in the municipal building.

TUESDAY, OCT. 19

**Dallas Township**  
 601 Tunkhannock Hwy.C, Dallas Township  
 A special public hearing will be held at 7 p.m.

in the municipal building concerning approval conditional use of land for the Country Club Shopping Center developers. The supervisors will meet at 7:30 p.m. for their regular meeting.

**Harveys Lake Borough**  
 Route 415, Harveys Lake  
 Council will meet at 5:30 p.m. for a work session and at 7:30 p.m. for its regular meeting in the municipal building.

WEDNESDAY, OCT. 20

**Dallas Borough**  
 25 Main St., Dallas  
 Council will hold a regular meeting at 7:30 p.m. in the municipal building.

THURSDAY, OCT. 21

**Back Mountain Community Partnership**  
 301 Lake St., Dallas Township  
 Members will meet at 3 p.m. in the Sandy & Marlene Insalaco Hall at Misericordia University.

NEWS

**Coverage Area:** The Dallas Post covers the Back Mountain community which includes the Dallas and Lake-Lehman school districts. We try to get to as many events as possible, but staff and space limitations make it impossible to cover everything. If you have news about your family, town, or organization, please send it to us and we'll try to get it in. Photographs are welcome. You may send items two ways: by mail to 15 N. Main St., Wilkes-Barre, 18711 or by e-mail to news@mydallaspost.com. E-mail is the best and most timely method for submissions. E-mailed photos must be sent in JPEG format with a resolution of at least 200 dpi. The deadline for all copy is 10 a.m. Wednesday prior to publication.

**Corrections, clarifications:** The Dallas Post will correct errors of fact or clarify any misunderstandings. Call 970-7440.

**Have a story idea?** Please call, we'd like to hear about it.  
**Letters:** The Dallas Post prints letters of local interest. Send letters to: Editor, The Dallas Post, 15 N. Main St., Wilkes-Barre PA 18711. All letters must be signed and include a daytime phone number for verification.

The Dallas Post

THE TIMES LEADER Community Newspaper Group

15 N. MAIN ST., WILKES-BARRE, PA 18711 • 570-675-5211  
 news@mydallaspost.com • FAX: 570-675-3650

(ISSN 1551-1050) USPS 147720

ADVERTISING

Display Advertising Deadline: Tuesdays at 12 noon.

Call Diane McGehee 970-7153

The Dallas Post has a variety of advertising rates and programs.

The Dallas Post satisfies most co-op ad programs. Offers creative services at no charge.

Combination rates with The Abington Journal, Clarks Summit, and the Sunday Dispatch, Pittston available.

WANT A PHOTO?

You can now purchase any photo that appears in the Dallas Post from The Times Leader Photo Store. Simply log onto www.timesleader.com/photostore and click on the link for the Dallas Post.

CIRCULATION

Orders for subscriptions received by Friday at noon will begin the following week. Please inform us of damage or delay, call 829-5000. The Dallas Post is published weekly by Wilkes-Barre Publishing Company, \$20 per year in Luzerne and Wyoming counties (PA), \$24 in NY, NY and all other PA counties, \$27 all other states. Call 829-5000 for rates to other areas.

Periodicals postage paid at Wilkes-Barre, PA 18701-9998

POSTMASTER: Send address changes to The Dallas Post, 15 N. Main St., Wilkes-Barre PA 18711