

**WWM** Wyoming Valley Motors  
560 Pierce St. • Kingston, PA  
570-714-9924



2010 SUBARU  
**FORESTER**  
With Special Edition Package **2.5x**

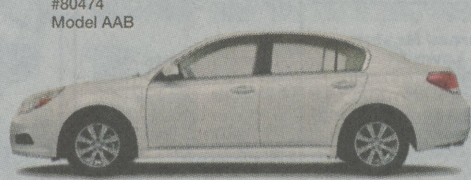


ONLY  
**\$20,995**  
OR  
**\$222\***

Customer Cash	\$1,500
Bank Fee	\$595
Security	\$0
1st Payment	\$222
Amount Due at lease signing	\$2317*

\*Plus tax & tags. 36 month lease. 10K miles/year with bank approval. Offers expire 4/30/10.

2010 SUBARU  
**LEGACY**  
**2.5i**



ONLY  
**\$21,495**  
OR  
**\$214\***

Customer Cash	\$1,500
Bank Fee	\$595
Security	\$0
1st Payment	\$214
Amount Due at lease signing	\$2309*

\*Plus tax & tags. 36 month lease. 10K miles/year with bank approval. Offers expire 4/30/10.

2010 SUBARU  
**IMPREZA**  
**2.5i**



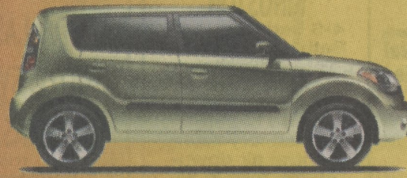
ONLY  
**\$16,490**  
OR  
**\$159\***

Customer Cash	\$1,500
Bank Fee	\$595
Security	\$0
1st Payment	\$159
Amount Due at lease signing	\$2254*

\*Plus tax & tags. 36 month lease. 10K miles/year with bank approval. Offers expire 4/30/10.

**0% FINANCING!**  
**COMPLIMENTARY VACATION**  
**WITH ANY TEST DRIVE!!!**

2010 KIA SOUL  
**\$16,995**



2010 KIA FORTE EX  
**\$17,250**



ONLY **\$99 PER MONTH!\***

All come with and Automatic Transmission, Keyless entry, Satellite Radio & Bluetooth Along with 10 year 100K Warranty

2010 KIA SORENTO LX  
**\$23,895**

ONLY **\$199 PER MONTH\***



**WWM** Wyoming Valley Motors  
560 Pierce St. • Kingston, PA  
570-714-9924



Connect with us! Facebook Search: Wyoming Valley Motors  
Twitter.com/WVMotors • MySpace.com/WyomingValleyMotors

\*36 month lease, 12K miles/year. Plus tax, tag & fees (Sorento \$3,441 plus fees) (Forte \$3,820 plus fees) (Soul, \$3,760 plus fees). 0% financing for 36 months. With approved credit. Warranty is a limited powertrain warranty. For details, see retailer or go to [kia.com](http://kia.com). Offer expires 4/30/10.



2010 Jetta  
**"LIMITED EDITION"**



Stk # 30080  
Automatic

- Bluetooth
- Leatherette
- Heated Seats
- Alloy Wheels
- No Charge Scheduled Maintenance!\*\*\*

LEASE FOR ONLY **\$199 per month!\***

\*Plus tax. \$1,750 customer down payment, plus fees due at signing. \$2,915.99 total c.o.d. Fees include \$575 acquisition fee, 1st months payment paid & tags. Waived security. 36 Month 10k miles per year. Valid upon Volkswagen credit approval. Exp. 4/30/10.

WE'VE GOT THE RATES YOU WANT!

<b>0.9% APR</b> 2010 CC	<b>0.9% APR</b> 2010 Tiguan • Jetta • Golf • GTI	<b>0.0% APR</b> 2010 Passat Sedan & Routan
----------------------------	---	---

2010 JETTA TDI DSG AUTOMATIC



LEASE FOR ONLY **\$249 PER MONTH**

\*Plus tax. 36 Month 10K miles per year. \$1999 plus fees due at signing (\$3290 total including \$249 security deposit). Valid upon Volkswagen credit approval. All offers expire 4/30/10.

FOR UP TO 66 MONTHS!  
\*SPECIAL RATES VALID UPON VCI APPROVAL.  
EXCLUDES TDI MODELS. EXPIRES 4/30/2010

**WWM** Wyoming Valley Motors  
Rt. 11 Larksville  
570-288-7411  
[wyomingvalleymotors.com](http://wyomingvalleymotors.com)



Das Auto.

\*Covers all MY 09 vehicles scheduled maintenance during the terms of the new vehicle limited warranty. Some limitations apply. See dealer for details. \*\*Est. 35mpg city/41mpg with automatic transmission EPA and fuel mileage are estimates only. Your fuel consumption may vary. \*\*\*The Volkswagen Carefree Maintenance Program covers the vehicle's scheduled maintenance for three years or 36,000 miles, whichever occurs first. Coverage during the term of the new vehicle limited warranty at no additional charge. Some limitations apply. See dealer or vehicle maintenance program booklet for complete details.



Lease A Mazda With Absolutely

**NOTHING**

Paid Out Of Pocket!\*

\*MAZDA3 & MAZDA6 ONLY. Excludes MAZDASPEED3.

**0% APR**  
FOR 60 MONTHS ON  
MAZDA3  
MAZDA6 &  
Mazda CX-9



2010 MAZDA3  
i Sport Automatic



ONLY  
**\$195 per month!**

With \$0 Due at Signing!

2010 MAZDA6  
i Sport Automatic



ONLY  
**\$229 per month!**

With \$0 Due at Signing!

2010 MAZDA3  
5 Door Sport Automatic



ONLY  
**\$239 per month!**

With \$0 Due at Signing!

Test Drive  
A Mazda Today!



Wyoming Valley Motors  
Rt. 11 Larksville  
570-288-7411

View All Of Our Specials Online At: [WYOMINGVALLEYMOTORS.COM](http://WYOMINGVALLEYMOTORS.COM)

**EXTENDED DUE TO RECORD SALES!**

[audiusa.com](http://audiusa.com)

Truth in Engineering Audi



Financing  
As Low As  
**1.9%**



2010 Audi A5 quattro Premium  
**\$459** Mo. 36 Month Lease

Down Payment	\$2,500
Refundable security deposit	\$550
Acquisition Fee	\$625
First month's payment	\$459
Amount due at lease inception	\$4,134

2010 Audi Q5 Premium  
**\$499** Mo. 36 Month Lease

Down Payment	\$2,500
Refundable security deposit	\$525
Acquisition Fee	\$625
First month's payment	\$499
Amount due at lease inception	\$4,149



2010 Audi A4 quattro Premium  
**\$369** Mo. 36 Month Lease

Down Payment	\$2,500
Refundable security deposit	\$0
Acquisition Fee	\$625
First month's payment	\$369
Amount due at lease inception	\$3,494



2010 Audi A6 3.0 Premium Plus  
**\$619** Mo. 36 Month Lease

Down Payment	\$2,500
Refundable security deposit	\$0
Acquisition Fee	\$625
First month's payment	\$619
Amount due at lease inception	\$3,744

**WWM** Wyoming Valley Motors  
Rt. 11 Larksville • (570) 288-7411 • [wyomingvalleyaudi.com](http://wyomingvalleyaudi.com)

Audi of America Inc. defines competition as automatic transmission versions of the 2009 Audi A4 2.0 T quattro, and the 2008 BMW 328xi and Mercedes-Benz C300 4MATIC. \*"Bigger" based on manufacturer-published dimensions. \*\*"Faster" based on independent, AMCI Certified 0-60 mph testing. \*\*\*"More fuel-efficient" based on EPA highway fuel economy estimates for each model; 27 highway mpg for A4 2.0 T quattro automatic. Your mileage may vary. \*36-month closed-end lease offered to qualified customers (in state(s) or market(s) here) by Audi Financial Services through participating dealers. Must take delivery by April 30, 2010. All payments based on \$2,500.00 plus first payment, bank fees and title fee due at delivery. Security Deposit is waived on all A4 leases. License fee \$212.00 on all models. Rate based on MSRP \$39,950 of 2010 Audi A5 quattro with premium package, Tiptronic transmission, heated seats and destination charge. Rate based on MSRP \$40,075 of 2010 Audi Q5 with premium package, Tiptronic transmission, heated seats and destination charge. Rate based on MSRP \$35,025 of 2010 Audi A4 quattro with premium package Tiptronic transmission, heated seats and destination charge. Rate based on MSRP \$52,875 of 2010 Audi A6 3.0 with premium package, Tiptronic transmission, heated seats and destination charge. Prices exclude taxes, title, other options and dealer charges. Lessee responsible for insurance, maintenance and repairs and may have some financial liability at lease end. Lessee responsible for \$0.25/mile over 10,000 miles per year and a disposition fee of \$350 due at lease end. "Audi", "A4", "quattro" and the four rings and Audi emblems are registered trademarks and "TFSI" is a trademark of AUDI AG. "Truth in Engineering" is a trademark of Audi of America, Inc. ©2008 Audi of America, Inc. To find out more about Audi, see your dealer, call 1-800-FOR-AUDI or visit us at [audiusa.com](http://audiusa.com).

The BMW  
Spring Sale Drive.

Wyoming Valley BMW



(570) 287-1133

The Ultimate Driving Machine®

Exceptional lease and finance offers  
Legendary performance  
No-cost maintenance standard  
The most fuel-efficient luxury fleet in America

**\$2,500 Spring Drive Credit**



2010 328i xDrive

**\$379**

per mo. +tax



Wyoming Valley BMW  
588 Market St. Kingston, PA  
570-287-1133  
[www.wvmbmw.com](http://www.wvmbmw.com)

**3.9% Financing for 60 Months**

\*36 Month lease. \$3,500 down payment. \$2,500 spring drive credit. 10,000 miles per year. MSRP \$40,050. \$5,044 total due at signing plus tax & tags. See dealer for details. Offer expires 4/30/10.