

**PUZZLE ANSWERS**

**King Crossword**

Answers

Solution time: 25 mins.

|   |   |   |   |   |   |   |   |   |   |   |   |
|---|---|---|---|---|---|---|---|---|---|---|---|
| E | B | B | S | E | A | S | B | E | T | A |   |
| G | O | O | U | L | N | A | A | M | E | N |   |
| A | R | M | I | L | O | V | E | L | U | C | Y |
| D | E | B | U | T | E | E | L |   |   |   |   |
|   |   | M | O | H | S | K | A | Z | O |   |   |
| I | A | M | A | R | O | C | K | D | A | N | A |
| O | V | A | S | P | O | O | K | N | T | H |   |
| T | I | M | S | I | W | A | N | T | Y | O | U |
| A | V | A | I | L | S | N | E | E |   |   |   |
|   |   | T | E | E |   | S | A | L | L | Y |   |
| I | G | E | T | I | D | E | A | S | Y | E | A |
| R | A | R | E | G | A | P | E | R | A | M |   |
| A | G | A | R | Y | U | R | T | E | N | S |   |

**Go Figure!**

answers

|    |   |    |   |   |    |
|----|---|----|---|---|----|
| 9  | ÷ | 3  | + | 8 | 11 |
| +  |   | x  |   | - |    |
| 1  | + | 7  | + | 7 | 15 |
| x  |   | +  |   | x |    |
| 2  | x | 4  | - | 5 | 3  |
| 20 |   | 25 |   | 5 |    |

**Super Crossword**

Answers

|   |   |   |   |   |   |   |   |   |   |   |   |   |   |   |   |   |   |   |   |
|---|---|---|---|---|---|---|---|---|---|---|---|---|---|---|---|---|---|---|---|
| B | A | F | A | C | R | E | D | I | E | T | Y | I | E | L | D |   |   |   |   |
| A | L | O | E | S | H | O | R | A | N | G | E | L | E | N | L | A | I |   |   |
| B | A | I | N | P | A | U | L | E | G | N | O | M | E | A | R | K | I | T | A |
| S | I | E | N | A | L | E | E | R | P | A | M | H | E | R |   |   |   |   |   |
| E | L | A | L | E | T | T | A | D | A | N | B | U | R | Y |   |   |   |   |   |
| W | I | L | L | J | A | M | S | B | U | R | G | E | R | I | E |   |   |   |   |
| E | R | N | W | H | O | S | S | O | L | A | R | G | L | A | S |   |   |   |   |
| N | E | V | A | D | A | T | R | A | C | T | O | R | H | A | L | L | I | E |   |
| E | N | O | L | A | N | O | R | M | A | W | U | R | S | T | T | E | E |   |   |
| C | A | C | A | O | O | N | A | B | A | A | R | E | E | K |   |   |   |   |   |
| J | A | M | E | S | T | O | W | N | F | R | A | N | K | F | O | R | T |   |   |
| P | O | T | O | T | E | L | G | A | L | X | B | E | L | I | G |   |   |   |   |
| E | L | L | T | O | S | I | R | L | A | M | A | S | D | U | A | N | E |   |   |
| A | L | O | H | A | V | I | S | I | T | O | R | P | O | E | T | I | C |   |   |
| M | A | N | E | T | R | E | N | E | N | A | P | A | O | N | O |   |   |   |   |
| R | U | T | H | S | A | N | T | A | B | A | R | B | A | R | I | A |   |   |   |
| C | A | P | E | M | A | Y | E | L | S | E | S | I | T | O | P |   |   |   |   |
| O | L | E | T | C | A | L | I | T | W | I | L | I | E | S |   |   |   |   |   |
| M | I | S | E | R | H | A | L | E | Y | E | A | U | C | L | A | I | R | E |   |
| M | A | T | T | E | M | I | A | M | O | G | R | E | R | A | I | L |   |   |   |
| A | S | S | E | T | N | O | O | N | N | O | E | L | Y | M | I | C | A |   |   |

Puzzles, Page 2



Seven Tiger Cub Scouts and two Lion Cub Scouts, all members of Pack 155 in Trucksville, recently hiked approximately five miles on the Back Mountain trail system between the Trucksville Fire Station and Luzerne. Scouts, from left, are Dennis Dukinas, Jacob Banta, Nick Zaboski, Doug Newbinging, Zack Chamberlain, Zack Calkins, Matt Cheskiewicz, Austin Sowga and Ethan Shilanski. Leaders, from left, are Erik Sowga and Russ Banta

**Pack 155 Scouts hike trail**

Seven Tiger Cub Scouts and two Lion Cub Scouts, all members of Pack 155 in Trucksville, braved unusually low temperatures and showery conditions completing approximately five miles on the Back Mountain trail system between the Trucksville Fire Station and Luzerne.

Members of the pack who participated in the hike include Dennis Dukinas, Jacob Banta, Nick Zaboski, Doug Newbinging, Zack Chamberlain, Zack Calkins, Matt Cheskiewicz, Austin Sowga and Ethan Shilanski.

The Scouts were accompanied by their leaders Russ Banta, Erik Sowga and Valerie Cal-

kins along with a number of parents.

By completing this hike, two of the Tigers, Dennis Dukinas and Nick Zaboski, earned one black bead each toward earning their Tiger Cub badge.

The Tiger Cubs and Lion Cubs of Pack 155 are sponsored by the Trucksville United Methodist Church and meet from 6:30 to 7:30 p.m. two Sunday evenings each month. For information about joining the pack, contact Russ Banta at 696-2833.

**Get The Benefits You Deserve!**

**Social Security Disability**

Claimants represented by attorneys are more successful in obtaining benefits. Call me for a FREE CONSULTATION. I can help.

Member of the National Organization of Social Security Claimants' Representatives

**Janet A. Conser**  
Attorney At Law

1575 Wyoming Ave., Forty Fort  
283-1200

Over 25 Years Experience



One of the Top 5 Summer Camps in PA!

5 MINUTES FROM THE DALLAS SCHOOL

**THERE'S SOMETHING FOR EVERYONE**

with over 25 recreational and educational activities to choose from like Horseback Riding, Go-carts, Crafts, Swimming, Soccer and more!



**WEEKLY RESIDENT CAMPS**

Ages 8-17  
July 4 - August 21  
PRICE FREEZE with 2009 prices!

**SUMMER DAY CAMP**

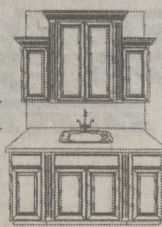
Ages 4 - 13  
June 14 - August 20  
NEW extended hours, transportation option and ALL-INCLUSIVE PRICING! Sign up for 1 week or all 10.

**OPEN HOUSE**  
May 2, 2010  
1-4pm

Call 333-4098 or visit us on the web at [www.camporchardhill.com](http://www.camporchardhill.com)

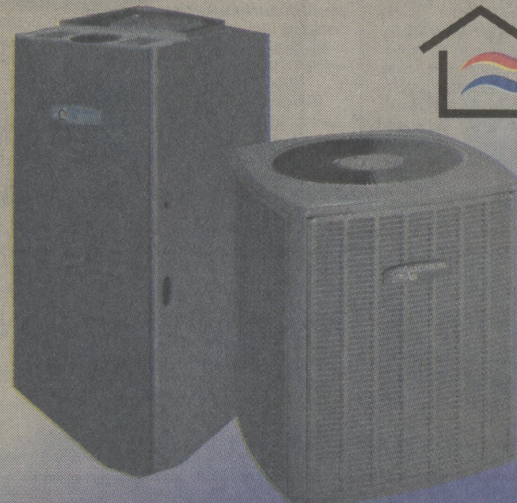
**QualityCabinets.**

60% OFF "ALL OF THE TIME"



WE SPECIALIZE IN KITCHENS AND BARS

**ANSTETT'S KITCHENS** PA. 012022  
12 EAST CAREY STREET, PLAINS, PA • 570-825-7530



QUALIFIES FOR FEDERAL TAX CREDITS!

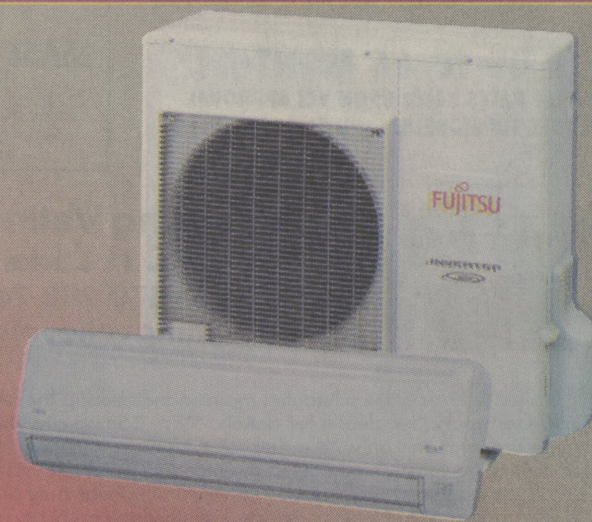
- High Efficiency
- Slab Mounted Condensing Unit
- Non-ozone Depleting A/C Coolant
- Financing Available on Most Units
- Manufacturer's Warranty

"Is a whole-house A/C system right for me?"

- Is your unit's current yearly operating cost more than \$400?
- Does your current unit have a SEER rating under 10?
- Did your current unit's warranty recently expire?
- Is your current unit too noisy?



- 18,000 BTUs
- 19 SEER Rating
- Slim and Stylish
- Energy Star Approved
- Apple-Catechin Air Filter
- Ultra Quiet Operation



**Cool Air in, Noise Out!**

- Typically half the cost of a ducted system
- Complete ductless design
- Does not take up any floor space
- Less noise than traditional Units

**Now is the time to order your A/C installation**

Save with 2 Years Same-As-Cash or up to 72 Month Payment Plan!

Call today! 1-888-666-8687



**Montour**  
A division of Superior Plus Energy Services

HOME COMFORT SERVICES

Our Energy Serving You

We've upgraded to a new website: [www.superiorplusenergy.com](http://www.superiorplusenergy.com) - Now Online Bill Pay!

Montoursville | Lewisburg | Mill Hall | State College | Bloomsburg | Scranton | Wilkes-Barre | Harrisburg | Shamokin | White Haven

\*Up to 24 month Same As Cash option available on qualified equipment purchase and/or installations. Up to 72 months installment payment plan available on qualified purchases and/or installations totaling over \$5000. Installment Plan option subject to installment fee. Call 1-888-666-8687 for more information and to see if you qualify. \*\*Tax credits available on select models only. See Superior Plus Energy Services for more information.