



Wyoming Valley Motors
Rt. II Larksville
570-288-7411
wyomingvalleyaudi.com



Financing As Low As

1.9% On In Stock 2009 Audi Vehicles

Save Up To \$5,000 On In Stock 2009 Audi Vehicles

audiusa.com



2009 Audi A4 2.0 quattro Premium

\$439 Mo. 36 Month Lease

Down payment	\$936
Refundable security deposit	\$500
Acquisition fee	\$625
First month's payment	\$439
Amount due at lease inception	\$2,500
Excludes Taxes, Title and Dealer Fees.	

Stk# 29133

2009 Audi Q5 3.2 quattro Premium

\$549 Mo. 36 Month Lease

Down payment	\$726
Refundable security deposit	\$600
Acquisition fee	\$625
First month's payment	\$549
Amount due at lease inception	\$2,500
Excludes Taxes, Title and Dealer Fees.	



Stk# 29187



Stk# 29140

2009 Audi A4 Cabriolet quattro Special Edition

\$549 Mo. 36 Month Lease

Down payment	\$726
Refundable security deposit	\$600
Acquisition fee	\$625
First month's payment	\$549
Amount due at lease inception	\$2,500
Excludes Taxes, Title and Dealer Fees.	

2009 Audi A6 3.0 quattro Premium

\$629 Mo. 36 Month Lease

Down payment	\$2,246
Refundable security deposit	\$0
Acquisition fee	\$625
First month's payment	\$629
Amount due at lease inception	\$3,500
Excludes Taxes, Title and Dealer Fees.	



Stk# 29165

Audi of America, Inc. defines competition as automatic transmission versions of the 2009 Audi A4 2.0 T quattro, and the 2008 BMW 328xi and Mercedes-Benz C300 4MATIC. *"Bigger" based on manufacturer-published dimensions. **"Faster" based on independent, AMCI Certified 0-60 mph testing. ***"More fuel-efficient" based on EPA highway fuel economy estimates for each model; 27 highway mpg for A4 2.0 T quattro automatic. Your mileage may vary. *36-month closed-end lease offered to qualified customers (in state(s) or market(s) here) by Audi Financial Services through participating dealers. Must take delivery by August 31, 2009. Rate based on MSRP \$34,725 of 2009 Audi A4 2.0 quattro with premium package, Tiptronic transmission, heated seats and destination charge. Rate based on MSRP \$41,175 of 2009 Audi Q5 3.2 quattro with premium package, Tiptronic transmission, heated seats and destination charge. Rate based on MSRP \$44,125 of 2009 Audi A4 Cabriolet quattro Special Edition. Rate based on MSRP \$50,925 of 2009 Audi A6 3.0 quattro with premium package, Tiptronic transmission, heated seats and destination charge. Prices exclude taxes, title, other options and dealer charges. Lessee responsible for insurance, maintenance and repairs and may have some financial liability at lease end. Lessee responsible for \$0.25/mile over 10,000 miles per year and a disposition fee of \$350 due at lease end. "Audi," "A4," "quattro" and the four rings and Audi emblems are registered trademarks and "TFSI" is a trademark of AUDIAG. "Truth in Engineering" is a trademark of Audi of America, Inc. ©2008 Audi of America, Inc. To find out more about Audi, see your dealer, call 1-800-FOR-AUDI or visit us at audiusa.com.

Wyoming Valley BMW



www.wvmbmw.com
(570) 287-1133

The Ultimate Driving Machine™

A force of nature in any weather.
2009 328i xDrive Sedan



\$369 per mo. + tax

1.9% Financing For 60 Months



Wyoming Valley BMW
588 Market St. Kingston, PA
570-287-1133
www.wvmbmw.com

*36 Month lease. \$3,350 down. \$4,252.21 due at signing plus tax and tag. 10,000 miles per year. MSRP \$39,645. See dealer for details. Offer expires 8/31/09.

THE SUBARU A LOT TO LOVE EVENT



Wyoming Valley Motors
580 Pierce St. • Kingston, PA
570-714-9924
wyomingvalleymotors.com



SUBARU

2009 SUBARU
TRIBECA
7 Passenger Special Edition

SALE PRICE \$28,495



(Model 9TL)

\$339 PER MONTH LEASE/
36 MONTHS

\$1,500 Customer Cash
\$595 Bank Fee
\$339 First Payment
\$0 Security Deposit

\$2,434 Total Due at Delivery*
*Plus tax and tags.

SALE PRICE \$18,995

\$193 PER MONTH LEASE/
36 MONTHS

\$1,500 Customer Cash
\$595 Bank Fee
\$193 First Payment
\$0 Security Deposit

\$2,288 Total Due at Delivery*
*Plus tax and tags.



(Model 9JB)

Automatic

2009 SUBARU
LEGACY
2.5i SPECIAL EDITION

SALE PRICE \$20,960



(Model 9AC)

\$199 PER MONTH LEASE/
36 MONTHS

\$1,500 Customer Cash
\$595 Bank Fee
\$199 First Payment
\$0 Security Deposit

\$2,294 Total Due at Delivery*
*Plus tax and tags.

*36 Months, 10K miles per year, plus tax & tag. With approved credit. Lease deals expire 8/31/09.



**CASH FOR CLUNKERS
HEADQUARTERS!**
CALL (570) 288-7411
FOR DETAILS!

Das Auto.



Wyoming Valley Motors
Rt. II Larksville
570-288-7411
wyomingvalleymotors.com

**0% FINANCING ON
ALL MODELS!**

*Excludes TDI trims. Valid upon Volkswagen credit approval.

NO CHARGE SCHEDULE MAINTENANCE STANDARD*

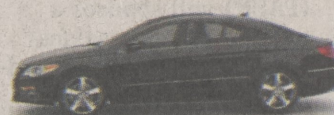
*Covers all MY 09 vehicles scheduled maintenance during the terms of the new vehicle limited warranty. Some limitations apply. See dealer for details.

2009 GTI



25 MPG Combined

2009 CC



23 MPG Combined

2009 EOS



25 MPG Combined

2009 Tiguan



20 MPG Combined

2009 Passat



23 MPG Combined

2009 Rabbit



24 MPG Combined

2009 Jetta



24 MPG Combined

2009 Routan
18 MPG Combined



**0% Plus \$3,000
for 72 Months***

2009 New Beetle
Convertible



23 MPG Combined

*0% for 36 months on Rabbit, Jetta, New Beetle, EOS, Tiguan, and CC. 0% for 60 months on GTI, Passat and Touareg. Valid upon Volkswagen credit approval. Expires 8/31/09.

**Routan with rear seat entertainment valid upon Volkswagen credit approval.

***EPA combined MPG.