

Feel the road. Feel the rush. Feel fiscally responsible.

3.9% Financing on 2005/2006 X3's and X5's and 2 Payments are on BMW

Wyoming Valley BMW



www.wvbmw.com
1-866-623-1094
(570) 287-1133

The Ultimate Driving Machine®



3 X3's available starting at \$20,995



3 X5's available starting at \$26,995

Financing as low as 1.9%*

*1.9% financing for 36 months, 2.9% for 24 months, 3.9% for 60 months.

Tax, tags, and licensing fees extra. Financing available through BMW Financial Services NA LLC for qualified buyers on Certified pre-owned 2005 and 2006 X3's and X5's. See dealer for details. Offer expires 12/31/08.



Wyoming Valley BMW
588 Market St. Kingston, PA
570-287-1133
www.wvbmw.com

Proof that the laws of physics are actually just loose suggestions.



The entirely new Audi A4. Progress is beautiful. At first glance, the stat sheet on our entirely new A4 doesn't make much sense. Usually, cars that are bigger don't go faster (see the new 2.0 TFSI engine). And cars that are both bigger and faster almost never consume less gas. And yet, somehow, the new Audi A4 is all three - bigger, faster and more fuel-efficient. A combination that probably doesn't sit well with our German-engineered competition. To experience this automotive enigma for yourself, visit an Audi dealer today and test drive the bigger, faster and, yes, more fuel-efficient Audi A4. Audi. Truth in Engineering.



audiusa.com

\$459 Mo.
36 Month Lease

Down payment	\$0
Refundable security deposit	\$0*
Acquisition fee	\$0
First month's payment	\$0
Amount due at lease inception	\$0
Excludes Taxes, Title and Dealer Fees.	

2009 A4 quattro®



Wyoming Valley Motors
Rt. 11 Larksville
570-288-7411

Audi of America, Inc. defines competition as automatic transmission versions of the 2009 Audi A4 2.0 T quattro, and the 2008 BMW 328xi and Mercedes-Benz C300 4MATIC. *Bigger based on manufacturer-published dimensions. *Faster based on independent, AECI Certified 0-60 mph testing. **More fuel-efficient based on EPA highway fuel economy estimates for each model: 27 highway mpg for A4 2.0 T quattro automatic. Your mileage may vary. *36-month closed-end lease offered to qualified customers (in states or markets) here by Audi Financial Services through participating dealers. Must take delivery by December 31, 2008. Rate based on MSRP \$33,975 of 2009 Audi A4 Premium 2.0 T with quattro all-wheel drive, 6-speed automatic transmission with Tiptronic, and destination charge. Price excludes taxes, title, other options and dealer charges. Purchase option at lease end for \$19,705. Advertised offer requires dealer contribution; final negotiated price may vary by dealer. Lessee responsible for insurance, maintenance and repairs and may have some financial liability at lease end. Lessee responsible for \$0.25/mile over 10,000 miles per year and a disposition fee of \$350 due at lease end. Model shown: Audi A4 Premium 2.0 T with quattro, 6-speed automatic transmission with Tiptronic and destination charge, MSRP \$33,975 (excludes taxes, title, other options and dealer charges), which affects lease price. *Audi, *A4, *quattro and the four rings and Audi emblems are registered trademarks and *TFSI is a trademark of AUDI AG. *Truth in Engineering is a trademark of Audi of America, Inc. ©2008 Audi of America, Inc. To find out more about Audi, see your dealer, call 1-800-FOR-AUDI or visit us at audiusa.com.

The Return of Volkswagen's



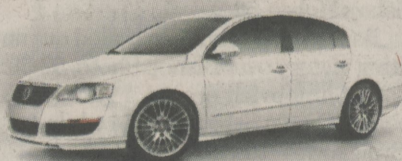
Das Auto:



Sign **THEN** drive
Event

ZERO Due at Start Leases on All 2009 VW models!**

2009 Passat



Stock # 39010

\$399 per month*

2009 Jetta



Stock # 39033

\$269 per month*

2009 Tiguan



Stock #39054

\$333 per month*



Wyoming Valley Motors
Rt. 11 Larksville
570-288-7411
wyomingvalleymotors.com

2009 Routan "S"



0% for 72 Months!*

*Offer valid upon credit approval. Financed through VW credit. Offer ends 12/31/08.

2009 Jetta TDI Clean Diesel



6 Available Starting at \$22,640!*

*Plus tax. With credit approval, financed through VW credit. Discounts are dealer discounts off of MSRP. Includes dealer case where applicable. Offer ends 12/31/08.

Owner Loyalty Offers Available. Call Us for Details. **

**On select models only. Must be the owner of 1999 or newer VW. See dealer for details. ALL OFFERS EXPIRE 12/31/2008.