

CHURCH SERVICES

Alderson United Methodist Harveys Lake
Sunday worship, 9:30 a.m.; Sunday school, 11 a.m.
Friday: Choir practice, 5:30 p.m.

Apostolic Faith Tabernacle
Village Road, Orange
Pastor Frank Chorba
333-5172
Sunday school and worship, 10 a.m.
Evening worship, 7 p.m.
Wednesday: Bible study, 7:30 p.m.

Back Mountain Harvest Assembly
340 Carverton Road, Trucksville
The Rev. Dan Miller
696-1128
Sunday: worship services 8 a.m., 9:45 a.m. and 11 a.m.; evening service 6:30 p.m.;
Children's services 8 and 11 a.m.;
Christian education classes 9:45 a.m.

Beaumont Union Gospel Church
Route 309, Beaumont
Pastor Dominick Petillo
Sunday worship, 9 a.m.; Sunday school for all ages, 10:15 a.m.;
Evening worship, 6 p.m.
Midweek prayer and Bible study at 6 p.m. Wednesdays.

Bowman's Creek Free Methodist Church
Route 309, Bowman's Creek

298-2137
Pastor Lynn and Beverly Mokwa
Sunday school, 10 a.m.; Worship service, 11 a.m.; Sunday night service, 6 p.m.
Tuesdays: ladies Bible study, 7 p.m.
Wednesdays: prayer group and teen group, 7 p.m.
Thursdays: men's Bible study, 7 p.m.

Carverton Charge of the United Methodist Church
(Carverton, Orange and Mt. Zion)
Rev. Jackson H. Cox, pastor
Services: Carverton, 9 a.m.; Orange, 10 a.m.; Mt. Zion, 11 a.m.

Center Moreland United Methodist Church
333-4354
The Rev. Mary Jean Simonin
Worship times:
Dymond Hollow: 10 a.m.
Center Moreland: Sunday school, 9:45 a.m.; Worship, 8:30 a.m. and 11 a.m.
Mondays: Choir, 6 p.m. and RE-NEW 1, 7 p.m.
Thursday: Purpose Driven Life, 10 a.m.

Cross Creek Community Church
370 Carverton Rd., Trucksville
696-0399
Sunday: Worship services and praise team, 8 a.m. and 10:30 a.m.; junior church, 10:30 a.m.; adult Bible studies and classes for all ages, 9:30 a.m.
Wednesday: Family Night - adult

Bible study and prayer; AWANA for children 3 years to sixth grade, 6:30 p.m.; Crossroads youth group for junior and senior high students, 6:30 p.m.

Dallas Baptist Church
Route 415, Dallas
The Rev. Jerry Branch
Sundays: Bible study for all ages, 9:15 a.m.; Worship, 10:30 a.m.
Wednesdays: Caraway Street for kids, 6:30 p.m.
Thursdays: women's Bible study, 9:30 a.m. at home of Mary Mounce.

Dallas United Methodist
4 Parsonage St., Dallas
675-0122
The Rev. William Lewis
Handicapped accessible
Sunday worship, 10:30 a.m.
Sunday school, 9 a.m.

Emmanuel Assembly of God
Dymond Hollow: 10 a.m.
243 Church Rd., Harveys Lake
Sunday school, all ages, 9:45 a.m.; worship services, 10:45 a.m. and 6:30 p.m.
Mondays: teen gathering, 6:30 p.m.
Wednesdays: boys groups (Rangers), girls groups (Missionettes), adult Bible study, 7 p.m.

Fellowship Evangelical Free Church
45 Hildebrandt Rd. Dallas,
Sundays: worship 9 a.m. and 10:45 a.m., Sunday school during both hours.
Wednesdays: Pioneer Clubs for children grades K-5 and adult

Bible study, 6:15 p.m.
Thursdays: Youth group for junior and senior high, 6 p.m.

Gate of Heaven
Machell Avenue, Dallas
675-2121
Confession, Saturdays from 4-4:30 p.m. and any time by request.
Saturday: Mass at 5 p.m.
Sunday: Mass at 7 a.m., 9 a.m. and 11:30 a.m.

Grace Community Church
Memorial Highway Dallas
Sunday school for all ages, 9:45 a.m.
Morning worship, 11 a.m.
Evening service, 6 p.m.
Youth group, 6 p.m.
Wednesday: Awana for kids, 6 p.m.
Wednesday: Bible study and prayer, 6:30 p.m.

High Point Church
1919 Mountain Road
Larksville
779-7668
www.highpointnepa.com
Sunday: Worship service 11 a.m.; adult learning 9:30 a.m.;
Children's Sunday school and student ministry, 9:30 a.m.
Wednesday: Kids Zone (age 2 to sixth grade), 6:45 p.m.
Student ministries (grades 7-12), 7 p.m.

Huntsville Christian Church
Pastor Dennis Gray
1160 Church Road, Dallas
675-0611

www.hccdoc.org
Worship, 9:30 a.m.
Sunday School, 11 a.m.
Wednesday prayer meeting, 6:30 p.m.

Huntsville United Methodist Church
2355 Huntsville Road
Jackson Township
675-3375
Pastor W. James Pall
Sunday worship and Sunday school, 10 a.m.

Lehman-Idetown United Methodist Church
Pastor Nancy L. Russell, 675-5192
Lehman UMC, 1011 Mt. View Dr., Lehman Center
Idetown UMC, Idetown Rd. off Routes 118 and 415
Sunday worship services at Lehman UMC, 10:30 a.m.

New Life Community Church
Brace Road, Orange
Sunday schedule: All ages Sunday school classes, 9:30 a.m.; worship service, 10:30 a.m.

Noxen Charge of the United Methodist Churches
The Rev. Leanne H. Campbell
298-2503
Kunkle, Route 309: Sunday worship 10 a.m. children's Sunday school during sermon.
Ruggles, Route 29 between Pikes Creek and Noxen: Sunday worship 9 a.m.
Children's Sunday school during sermon.

Our Lady of Mt. Carmel Church
Route 29, Lake Silkworth
Services: Saturday, 4 p.m.; Sunday, 8:30 a.m. and 11 a.m.

Outlet Tabernacle Bible Church
Outlet Road, Harveys Lake
675-1664
Sunday morning worship, 10:30 a.m.; Sunday evening worship, 6 p.m.
Wednesday: prayer meeting, 7 p.m.
Women's Bible Study first Monday of the month, 7 p.m.

Prince of Peace Episcopal Church
420 Main St., Dallas
Sunday, Dec. 25: Holy Eucharist, 10 a.m.
Alanon meeting, 7 p.m.
Dec. 26: AA meeting, 7 p.m.
Dec. 28: Parish Life meeting, 7 p.m.

River Of Life at Kingdom Power Ministries
194 North Memorial Hwy.
Shavertown
Sunday service 10:30 a.m., kids church available

Thursdays: Mentoring-Revelatory, 6 p.m.; Intercession and soaking prayer, 7 p.m.

River Of Life Fellowship Ministries
Old Lehman Middle School
Outlet Road, Lehman Township
www.roifministries.org
Sunday services, 10:30 a.m.
Clothing Closet on Wednesdays from 7-8:30 p.m. and Sundays from 10:30 a.m. to noon

Shavertown United Methodist
163 N. Pioneer Avenue, Shavertown
675-3616
The Rev. Douglas Clark and the Rev. Drew Cottle
Saturdays: 5:30 p.m., chapel service
Sundays: family service, 9 a.m.; education, 10 a.m.; traditional worship, 11 a.m.
Nursery care available during Sunday services.

St. Luke's Reformation Lutheran
Market and School streets, Noxen
298-2611
Martin Luther Everhart, lay minister
e-mail: everhartmartin56@hotmail.com
Worship service at 11 a.m.
Sunday School, 9:45 a.m.

St. Paul's Lutheran
Route 118, Dallas/Lehman Twp.
The Rev. Charles H. Grube
675-3859
E-mail: stpaul@epix.net
Web site: stpaulselca.com
Dec. 25: Lessons and carols on Christmas Day, 9:30 a.m.
Dec. 31: New Year's service, 5:30 p.m.
Jan. 1: worship, 9:30 a.m.

St. Therese's Catholic Church
Pioneer Avenue and Davis Street, Shavertown
Sunday: Sacrament of the Eucharist, 7:30 a.m., 9 a.m. and 11 a.m.
Children's Liturgy of the Word, 9 a.m.

Trinity Presbyterian Church
105 Irem Road, Dallas
Sunday school, 9:30 a.m.
Worship service, 11 a.m.

Trucksville United Methodist
40 Knob Hill Rd., Trucksville
The Rev. Michael Bealla
trucksvilleumc@epix.net
Sunday services at 8:30 a.m. and 11 a.m.
Church school at 9:45 a.m.

Victory Baptist Bible Church
58 Market St., Lehman Township
Sunday School, 10 a.m.; morning worship, 11 a.m.; evening worship, 6:30 p.m.
Wednesday prayer service, 6:30 p.m.

CROSSWORD CORNER

Super Crossword SWEET GNAW-THINGS

ACROSS 1 Pugilistic poke 4 Situated a squeak 9 Fuel source 13 "Turanod" tenor 18 Heady quaff 19 Savanna sight 20 Lhasa — 21 Arbus apparatus 22 Rodent's favorite Monkees tune? 24 Lost in thought 25 Nuclear eroding 26 Brimming 27 Join up 29 Take into account 31 Hook's educational mate 32 — reaction 34 Diva 36 Moon crawler 38 Relative of stir 39 Rodent cheese-cake? 45 Laundry problem 47 Frigg's fellow 48 Young boxers 49 Relished a roast

18 22 26 32 33 34 35 36 37 38 39 40 41 42 43 44 45 46 47 48 49 50 51 52 53 54 55 56 57 58 59 60 61 62 63 64 65 66 67 68 69 70 71 72 73 74 75 76 77 78 79 80 81 82 83 84 85 86 87 88 89 90 91 92 93 94 95 96 97 98 99 100 101 102 103 104 105 106 107 108 109 110 111 112 113 114 115 116 117 118 119 120 121 122 123 124 125 126 127 128 129 130 131 132 133 134 135 136 137 138 139 140 141 142

©2005 by King Features Syndicate, Inc. World rights reserved.

Rational Numbers by Linda Thistle

Using the clues, simple arithmetic, and a little logic, place a single digit (0 to 9) in each empty box in the diagram. To help you get started, one digit has been entered in the diagram.

Diagram for Rational Numbers crossword puzzle with numbers 1-14 placed in specific boxes.

- ACROSS 1. Three times 5-Down 3. One-seventh of 6-Across 4. Three less than 12-Across 5. Two more than 10-Across 6. 13-Across plus 13-Down 8. Consecutive digits in ascending order 9. 4-Across minus 8-Across 10. One-half of 1-Down 11. Two times 13-Across 12. One-third of 3-Down 13. 5-Across plus 8-Across 14. 11-Across plus 12-Across

- DOWN 1. Three less than 9-Across 2. 14-Across plus 10-Across

King Crossword

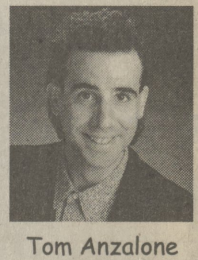
Diagram for King Crossword puzzle with numbers 1-14 placed in specific boxes.

- ACROSS 1 Periods of time 5 Distant 8 Oafish one 12 First State 14 Staffer 15 Listless 16 Broadway flasher 17 Cacophony 18 Extreme fruit-gality 20 Work in a refinery 23 Roll-call reply 24 Put on the payroll 25 Mrs. Bob Hope 28 Chang's brother 29 Succeeds in business 30 Anonymous John 32 Wheeled platforms 34 Be worthy of 35 Early sitcom heroine 36 Pointed (at) 37 Deli meat 40 Math course (Abbr.) 41 Egg 42 Miami team 47 "Queen - Day" 48 Apportioned 49 Evokes idolatry

- 1 Sib's kid 2 Secure spot 3 mater 4 Speak freely 5 Roth — 6 Exist 7 Temptation location 8 Earl — 9 Biggers 9 Living room 10 Antipollution grp. 11 "The — Night" ("50 film) 12 Carry 13 Perfect pet? 14 Grandpa McCoy 15 Rodent for squirrel 16 Pisce follower 17 Sapphire side 21 Future officer 23 "We've Only Just —" ("70 film) 28 Hairy legend 30 Urban transport 33 Sugar amts. 35 Barbecue 37 Christmas visitors 39 Volving 40 Turn of phrase 67 McCarthy's trunkmate 89 West alliance 92 Brace 95 Asta's mistress 96 Snarl 97 Banned pesticide 98 London district 102 Shake up town drunk 104 Actor's actor? 106 Spassky's game 107 Pillow, e.g. 109 Bit of a beach 110 Medical grp. 111 "V's "Eight is —" 112 About to sink 113 Screwdriver ingredient 118 Spouse 120 Composer 122 Prod 123 Binchy's "Road" 124 Tend the sauce 126 Wallop 127 Architect Saarinen 128 Small combo 130 Gibson or Tillis 132 Unbalanced 134 Wager

Puzzle answers, Page 10

Wise Crackers Comedy Club Smile Your Way into "06"
At our new showroom in Wilkes-Barre at Genetri's
Friday, December 30 at 9:00 p.m.
Saturday, December 31 at 7:00 p.m. and 10:00 p.m. (7:00 p.m. is non-smoking)
Dinner & Show Packages Available Also Show Packages Only
Closed Christmas Weekend
Call for reservations 1-866-424-2411



Tom Anzalone

The Post TIMES LEADER Community Newspaper Group
Coverage Area: The Post covers the "Back Mountain" area of Luzerne County, including the Dallas and Lake-Lehman school districts, and southern Wyoming County. We try to get to as many events as possible, but staff and space limitations make it impossible to cover everything. If you have news about your family, town, or organization, please send it to us and we'll try to get it in. Photographs are welcome. You may send items to the address above, or drop them off at the Uni-Mart in Dallas near the intersection of Routes 309 and 415. E-mail is the best and most timely method for submissions. Send items (digital photos, too) to thepost@leader.net
Deadline is noon, Wednesday prior to publication.
Corrections, clarifications: The Post will correct errors of fact or clarify any misunderstandings created by a story. Call 675-5211.
Have a story idea? Please call, we'd like to hear about it.
Letters: The Post prints letters of local interest. Send letters to: Editor, The Post, 15 N. Main St., Wilkes-Barre PA 18711. All letters must be signed and include a phone number at which we can reach the author.
WANT A PHOTO? We can provide colors prints of photos taken by our staff. Only 8x10 is available, at \$25 for the first print and \$15 each thereafter. Prepayment required. Call, mail in, or stop by to order.
ADVERTISING Display Advertising Deadline: Mondays at 5 P.M. Call: (570) 970-7101 We have a variety of rates and programs to suit your advertising needs. The Post satisfies most co-op ad programs. Creative services at no charge. Combination rates with The Abington Journal, Clarks Summit, and the Sunday Dispatch, Pittston available.
CIRCULATION Orders for subscriptions received by Friday at noon will begin the following week. Please inform us of damage or delay, call 829-5000. Published weekly by Cypress Media, LLC. \$26 per year in Luzerne and Wyoming counties (PA). Call 829-7141 for rates to other areas. Periodicals postage paid at Wilkes-Barre, PA 18701-9998
POSTMASTER: Send address changes to the Post, 15 N. Main St., Wilkes-Barre Pa 18711