

# COLLINI

Continued from Page 1

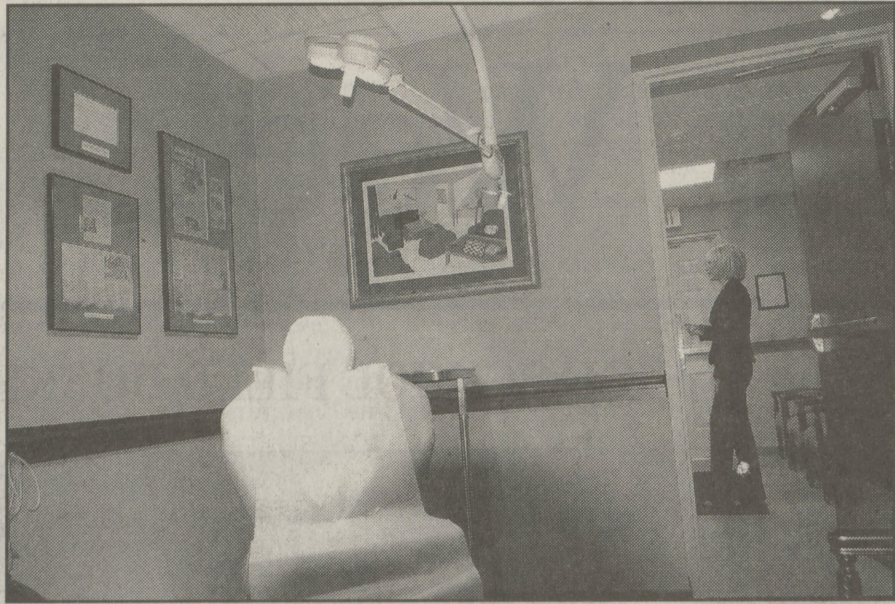
surgeons - to perform surgical treatments which involve all kinds of anesthetic agents, including general anesthesia.

"We had to change the design quite a bit to meet certain specifications, but the ultimate outcome is even greater than what we expected," he said.

Collini says three specific aspects of the facility make it "patient-friendly."

First, because plastic surgery is the only kind of surgery performed, there is a more sterile environment. Second, the admission process for patients is streamlined and much less complicated than a regular hospital. And finally, amenities such as lower lighting, the sound of falling water, and soft colors make it warmer and friendlier than a hospital operating room.

"I think it will stimulate more interest in the Back Mountain," said Collini, who performs a wide variety of plastic surgery, including facelifts, liposuction, breast reduction and enlargement, nose reshaping and Botox injections.



FOR THE POST/CHARLOTTE BARTIZEK

The Ambulatory Surgical Facility at the Renaissance Center for Plastic Surgery officially opened this week. The facility features two operating rooms and a recovery room.

"It shows the area is growing and it's a good place to do business. It's also a great place to live."

"I think it's a very positive addition to the Back Mountain. It's the kind of state-of-the-art facility you would only find in cities such as New York, Atlanta and Philadelphia."

And there could be more changes. At the present time, surgeries are performed on Monday, Tuesday afternoons, Friday, and Saturday mornings. Collini hopes that changes in the next few years.

"My ultimate goal is to have three or four other surgeons in this center," he said. "I'd love to see the operating room functioning on daily basis."

For more than a decade, Collini and his wife Susan have been very active in the local community. In addition to many other events, the couple plays a large role in the annual Pink Ribbon Ball, which benefits breast cancer research.

"Being a part of the community is very important to both of us," said Susan Collini, who serves as the facility's administrative director. "We enjoy promoting the people and businesses in the Back Mountain. We want them to thrive as much as us."

Susan Collini spent many hours helping to create more than 30 manuals for the new surgical center. The manuals include everything from policies to rules to regulations.

"It's been a crazy process and was difficult, at times, to work through everything," she said. "But it's definitely worth it. This is a very exciting time for everyone here."

# PET

Continued from Page 1

Kingston resident. "Often, we don't think of children as having problems, but our dogs have helped provide emotional support to children and people while encouraging reading."

The dogs aren't as much interested in reading as they are in listening to what the children or anyone has to say. There are several levels of obedience that a dog must master before being a certified as a TDI dog, Pulak says.

Dallas resident Marty Meely, a dog trainer of 20 years, says dogs of any age can learn. But it's easier to train a dog before 10 months old, before it develops any bad habit. Meely takes "Anna" to the Meadows Nursing Center in Dallas twice a month. "We walk in and they say 'Well here comes Anna'," he said.

Elaine Stephenson of Dallas came to the Dietrich wondering if she and her Corgi would be candidates for TDI's dog therapy program.

"It's a wonderful way to give back something to your community, through your dog," said Pulak.

The children are very intent on communicating with the dogs. "They are very serious about reading to the dogs," Meely says. But the dog is really an intermediary. It's the dog handler who is teaching the child to read. The dog is only the motivation. Regardless, the dogs are somehow soothing to the children. "It's amazing how calm the dogs are," says Margie Young from Tunkhannock.

At the program, each child is given a space on the floor with the dog and the handler, and chooses what book to read for 15 minutes. The dogs are not taught to respond in any specific manner. Some will listen, some will fall asleep. The handler is there for support in case the child stumbles while reading.

The results have been encouraging. Children who have not enjoyed reading before have come home to read books to their dogs, cats, birds or even pet fish.

Dallas Elementary School guidance counselor Betsy Jerome says the program - offered four times a year to first, second and third grade readers - provides remedial students an extra incentive to read.

"To be able to read to the dogs the children work through a series of reading goals and so reading to the dogs works as a reward," she says.

Dallas Elementary has had the therapy dogs in the school for the last three years at the end of each marking period.

And it's just plain fun, too. After watching "Sammy the Counting Poodle" perform, 7-year-old Anne Keeler of Kingston came up with this joke.

"What's better than a counting dog?" Her answer: "A spelling bee."

# DYB

Continued from Page 7

Hayden Jenkins scored 20 points as Dr. Kish posted a 36-16 win against PNC Bank. Nathan Kish added eight points and Tim Kennedy chipped in four for the winner. Ryan Hanson and Corey Eyerman scored eight and four points, respectively, for PNC while Nick Michalsin and Josh Shilanski each added a basket.

Craig Skudalski scored 16 points and Paul Brace added 15 as Brace's Orchard downed Dr. Ellis, 44-22. Michael Gallis added 10 points in the balanced scoring attack. Kohnor Rice and John Murray scored 10 points each for Dr. Ellis, while Justin Ellis added two points.

Jason Simonovich and Donnie Behm each scored 14 points as the Dough Company edged

M&T Bank, 32-31. David Miller added four points for the winners, while Logan May led both teams in steals.

Jordan Stephens scored a game-high 21 points and played well inside for M&T Bank. George Parkhurst and Harry Parkhurst added four points each and Ryan McCarthy chipped in a basket.

Shane Dunn scored 19 points as Eastern Penn Supply Co. narrowly defeated Rossen, Jenkins and Greenwald, 37-35. Austin Smith added seven points, while Ryan Thomas and Aaron Weir scored four points each. Sean Kerrick netted three points for the winners.

Brian Stepniak led Rossen with 14 points, while Johnathan Barre and Shane Panagakos added six and four points, respectively. Michael Carey led both teams in rebounds.

Alex Zubko and EJ Constantino combined for 38 points as

Gordon Insurance posted a 48-41 win against Drs. Scott and Clements. Zubko scored a game-high 22 points and Constantino finished with 16. Aaron Lisses and Chris Boland combined to score the other 10 points.

Ryan Zapoticky scored 20 points and Bobby Saba added 13 for Scott and Clements. Michael Kapral and Alex Barrilla chipped in six and two points, respectively.

### GIRLS DIVISION

Ashley Dunbar scored 14 points as The Fiedhouse posted a 26-21 win against Philly Hair in the Dallas Youth Basketball fifth/sixth grade girls division. Brianna Morgan and Sabrina Zurek added six points apiece for the winners.

Sarah Flaherty scored a game-

high 15 points for Philly Hair. Chelsey Conahan, Tamara Nijmeh and Sarah Zabolney added two points each.

## PUZZLE ANSWERS

### King Crossword

Answers  
Solution time: 21 mins.  
OBOE SAP ASKS  
RAYS AGO STOA  
ALEC DEMOTION  
LIZARD PHELPS  
PEER ORE  
DEMEANOR STOP  
LIVE REBUS TOE  
EAST DEMIJOHN  
DIP DIDO  
ADAGIO NEBULA  
DEMENTIA BRED  
AVER ION EGAD  
MOSS CUT REDS

### Rational Numbers

answers  
9 1 6 3 5  
4 6 7 1 0  
1 9 8 3 2  
6 3 7 3 7  
3 1 2 1 9  
4 2 7 5 2

LARA ABA UAFFA FODOR  
ESAU NIPS ELLIS ENOLA  
STING NTHRE BLUES DIANES  
STUN MEAL FIB DAH  
SCROD BAYS GAVAIN  
MATTHAU BALGO NAVEE  
ASHE STLO ERIE GOGGOL  
ITE THENECRLACE NORA  
DIAGAMA ABS STOKR DAD  
URIS GLDS EWAN ETE  
WANED CANADIENS GLED  
IMP ARAL TERM PLEA  
LOO SERIF EBB ELEVEN  
DOWN BABES IN ARMS EXO  
ENDOW TMIT ROUE TGET  
EVOKE CLACK STOMACH  
BRAKED ELLA SCARP  
PIP WIT ETTU LIEN  
ALLOT THEBANDPLAYEDON  
TBONE OASIS SAAB TITLO  
HOTEL RIATA TRE YEAR

Puzzles, Page 1

## Green Dog Pottery

Studio Sales and Lessons

Visit our studio on Main Street in Dallas. We feature fine stoneware pottery, handmade right in Dallas.



Custom orders accepted, or shop our gallery. Order early for the Holidays. Gift Certificates available. Stop by and see the potter at work!  
**Hours**  
Tuesday - Friday 9:00am - 2:30pm  
Wednesday Night 5:30-8:00pm  
Saturday 9:00am-3:00pm  
**674-2911**

All major credit cards accepted

GET A BETTER RETURN ON YOUR MONEY

MetLife Bank



For more information, visit **MetLife**  
50 Glenmaura National Blvd. Suite 302  
Moosic, PA 18507  
www.scranton.metlife.com  
or call 570-961-3900 x 129.

\*\*Annual Percentage Yields (APYs) are effective as of 11/16/05 and are subject to change. Money Market Accounts must maintain a minimum balance of \$1,499.99 or less to earn 3.50% APY; \$1,500-\$4,999.99 to earn 3.50% APR; \$5,000 - \$24,999.99 to earn 3.50% APY; \$25,000 or greater to earn 3.50% APY. Fees may reduce earnings. Certificates of Deposit require a minimum balance of \$1,000. Penalty for early withdrawal. Fees may reduce earnings.

MetLife Bank, N.A., Member FDIC

LQ401369Q(csp0106)MLB-LD

## A Touch of Elegance

For Mother's and Daughter's Dreams



Henry Roth  
style for your aisle

Family-owned  
bridal boutique

Everything your  
heart desires  
for the perfect  
event

Now featuring  
invitations & more!

801 Scranton-  
Carbondale Highway  
Eynon, PA 18403

Call Lois, Brenda or  
Blythe Today  
570-876-4360

Designed by  
Michelle Roth  
& Henry Roth

## Through the doors of SCRANTON PREP

Challenge Yourself To Become The Best You Can Be.

Exam Site Kings College, December 3, 2005  
McGowan Hall - Burke Auditorium  
Registration Begins At 8:30

For More Information Or To Arrange For a Personal Visit,  
Please Call 941-7737 Extension 112

## The Choice is Yours...Dallas!

15 MONTH CD

4.40%  
APY<sup>1</sup>

STAR ADVANTAGE

3.50%  
APY<sup>2</sup>

Money Market Account

There's no better time than now to lock into our **Choice CD** or to open a **STAR ADVANTAGE Money Market Account**. This special offer is available for a limited time. So hurry in to our **Dallas** branch today and make the **Choice** that's right for you.

\*Offer is good for new certificates of deposit and star advantage money market accounts only. That means money not currently on deposit at Pennstar Bank. The Annual Percentage Yields (APY) are accurate as of November 6, 2005. Rates are subject to change without notice.  
1. A \$1,000 minimum deposit and new or existing checking account are required to open and earn the stated APY. A penalty will be assessed for early withdrawal.  
2. A \$1,000 minimum deposit and new or existing checking account are required to open and earn the stated APY. Fees could reduce earnings. Rate is subject to change after account opening. Offer only available at our Dallas Branch.

300 Memorial Highway  
Dallas ★ 570-674-5172

Look To The Star  
Pennstar  
BANK

Anything Is Possible★

MEMBER FDIC  
Pennstar Bank is a  
division of NBT Bank, N.A.