

Wilkes University to offer well-water testing at lake

HARVEYS LAKE — A comprehensive package of drinking water tests is being offered to Harveys Lake residents at a deeply discounted price by Wilkes University's Water Quality Laboratory, together with the Harveys Lake Environmental Advisory Council.

Two testing packages are available, one at \$35 and one at \$65. The \$35 package measures water for acidity, conductivity, turbidity, total coliform, nitrate-nitrite and phosphate. The \$65 package measures water for all those plus fecal coliform, fecal streptococcus, corrosivity, hardness, iron, manganese and copper.

The water test samples will

be collected on Saturday, July 9. Interested residents should register with Carole Samson at 639-2113. A \$5 deposit will be required when picking up sampling packets. Full payment will be due on the day of testing, when dropping off water samples.

Sampling packets — including sampling containers and detailed instructions on drawing the water samples — can be picked up at the borough municipal building at any time during the week leading up to the testing, or they can be picked up on the test morning itself. The water sampling method is simple and can be completed in just a few minutes time.

On the morning of the test

day, participants will collect and deliver fresh water samples to the municipal building, where scientists will perform some tests immediately. Final results will be confidentially mailed to participants directly from the Wilkes laboratory within two weeks of the test day.

As an additional public service, the director of Wilkes University's Center for Environmental Quality, Brian Oram, will hold a question-and-answer session to aid in interpreting test results and answering well water questions for interested participants of this year's testing. The session will be held at 10 a.m. on Saturday, July 30, at the municipal building.

Bazaar fun and food

The sun shone on the 11th annual Gate of Heaven Church bazaar, held last weekend on the church grounds. Fun, games, baskets, entertainment and great food attracted hundreds of people to what has become another important date on the Back Mountain's social calendar.



Dorothy Kolankiewicz and Mary Evans serve up some pierogies.



Mark and Helene Kapral and son Jacob enjoy the food.



Nancy and Jill Paton, Tunkhannock, take their chances in the basket booth.



FOR THE POST/CHARLOTTE BARTIZEK

Maggie Gilbertson plays the black hole game.

Mattress Factory Direct
Comfortable Prices
19 West Side Mall
Edwardsville, PA 18704
570-288-1898

Twin Sets	\$99.00
Full Sets	\$119.00
Queen Sets	\$159.00

Curves
The power to amaze yourself.™

Wilkes-Barre Twp 270-6622
Plains 270-4554
Nanticoke 740-2777
Hanover 270-5588
Lehman 674-5588

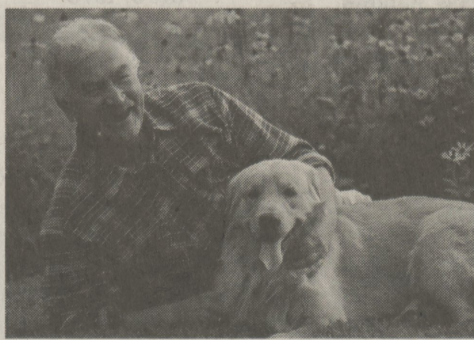
MASONIC VILLAGE
DALLAS, PA

Welcome to the area's newest active adult retirement community, located on the grounds of the Irem Country Club in Dallas!

You're invited to one of our Upcoming Presentations to learn about enjoying the carefree lifestyle you deserve:

July 6 & July 20

Each presentation begins at 10 a.m. at Irem Country Club, followed by a luncheon.



visit us on-line at www.pagrandlodge.org/villages/dallas/index.html

Our Administrative Office is now open at the Irem Clubhouse. To make an appointment to discuss possible cottage and apartment accommodations that suit your individual lifestyle, call Colleen Burns, Administrator, at (570) 675-1866 or 1 (866) 851-4243.



FOR THE POST/CHARLOTTE BARTIZEK

Truck runs into Toby Creek

A tractor-trailer coming down Route 309 to the intersection with Route 415 in Dallas ran straight through the intersection, and across the highway. The flatbed trailer and cab disconnected, with the cab rolling into Toby Creek. The accident occurred last Thursday at about 1:30 p.m. The Department of Environmental Protection and the Fish Commission were called out because the truck's engine leaked liquid into the creek. The driver appeared to be unhurt and initially refused treatment. In the photo, Dallas rescue personnel clamber down to get the driver out, but he had already climbed up on his own.

Need extra copies of this week's Post? They are on sale at local newsstands through Saturday

Gibbs Perennial Gardens
— LeRaysville, PA 18829 —
570-744-2717
www.gibbsperennialgardens.com

More than a Nursery,
More than a Garden —
An Outdoor Showroom that is
Worth the Trip from Anywhere

4 Acres of Walk-Through Gardens
Show Gardens • Ponds and Water Displays
Information Center and Sales Area
Antique and Gift Shop

From WB -
309 To Tunkhannock
Rte. 6 West Or To Wyalusing
At Red Light Turn Right
Take 706 To 467 To LeRaysville.

Buy directly from the grower for better prices,
quality, selection and hands-on knowledge

Open Daily May through September
8:00 AM to 4:30 PM
plus weekends and holidays

Waverly GENERAL STORE

Unique Gifts & Artisan Items
Stationary & Paper Goods
Clothing, Shoes & Accessories

Tue-Sat 10-6 Sunday 12-5 CLOSED Monday

1201 N Abington Road Waverly Pa
Adjacent to the Community House
586-1821

Beryl Ann's Bakery

Authentic home-made baked goods with no preservatives.

Pasties, Home-Made Bread, Pies,
Cakes & Cookies
Welsh Cookies!

675-2328
Hours: Wed-Fri 10am - 6pm • Sat 8am - 12pm • Closed Sun.
4 E. Center Street • Shavertown