

MIXING IT UP FOR BUSINESS



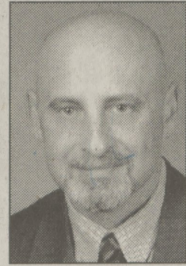
FOR THE POST/CHARLOTTE BARTIZEK

The Back Mountain Business and Professional Association held its fifth annual Business Fair and Card Exchange on May 24 at Stax & Co. restaurant in Dallas. The event, held each spring, allows members to display their products and services to one another and the general public. Next up is a members mixer on June 15. Call 675-9380 for information. In photos, clockwise from top: Elaine Weaver and Deanna Frei, from the Old House Cafe in Dallas, brought some tasty offerings to the event; Ben Oz, Direct Diamond Network, found a new friend in Angela Bonomo, from Shapes in Dallas; Nancy Eckert, from Lewith and Freeman Real Estate, filled out forms at the door.



MOVERS & SHAKERS

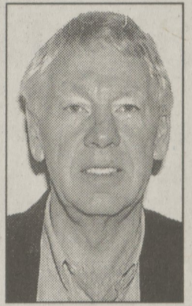
Charles Mancuso, M.D. has been appointed Chief of Anesthesiology at Tyler Memorial Hospital.



Dr. Mancuso comes to Tyler from Maimonides Medical Center, Brooklyn, New York, where he held various positions, including attending anesthesiologist, assistant director of anesthesiology and director of neurosurgical anesthesia. A native of Queens, New York, Dr. Mancuso received a bachelor of arts degree from New York University; and graduated from the Universidad Del Noreste, Tampico, Tamaulipas, Mexico in 1986. He completed a medical internship and a residency in anesthesiology at the Brookdale Hospital Medical Center, Brooklyn, New York. Dr. Mancuso, an avid sportsman, lives in Rush, with his wife Lauran and their golden retriever, Boudreaux.

recognition events. Anyone interested in information regarding the Wilkes-Barre campus Alumni Society can contact Hopa at 675-9202 or kaf165@psu.edu

Dr. William D. Camp has received a grant from the National Endowment to the Humanities in Washington, D.C. to study at the Ramsey Center of Mars College in



North Carolina. Several leading scholars and authors will participate in a colloquium and seminars during the June session, including Dr. John Inscow from the University of Georgia, who will lead research into the collection of artifacts and archival materials of the Ramsey Center.

Dr. Camp is a professor of sociology and history at Luzerne County Community College. His BA is from Gordon College, MA from Fairleigh Dickinson University, and his doctorate from Carnegie-Mellon University in Pittsburgh. Camp has participated in previous NEA programs at Brandeis, Harvard, and Boston Universities. He and his wife Ann reside in Dallas.

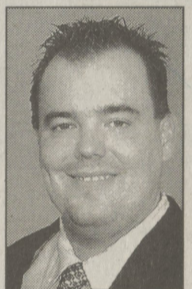
Kelley A. Hopa, Dallas, has been named alumni and development specialist at Penn State Wilkes-Barre.



Hopa earned her B.S. in human development and family studies from The Pennsylvania State University. She previously worked at the campus as an assistant with the summer youth program and served as an intern in the student activities office.

In her new role, Hopa will be responsible for coordinating alumni and development activities including identifying, cultivating and soliciting alumni and other potential donors; assisting in the planning and implementation of the annual fund, phonathon and donor

Michael A. Slacktish, owner/realtor of Century 21 Signature Properties in Shavertown



has completed the Century 21 International Management Academy (IMA), an intensive five-day course that educates and empowers new and seasoned Century 21 System affiliates with the latest management techniques.

Face value tax due by June 14

The 2005 Luzerne County and Dallas Borough real estate tax bills are due at the face amount on June 14. After June 15, unpaid bills will be subject to a 10 percent penalty. Dallas Borough Tax Collector Mark Van Etten will have office hours at the Dallas Borough Building on Saturday, June 11, from 8:30 to 11:30 a.m. and Wednesday, June 8 and June 14 from 6 to 7:30 p.m. Collection times are also available by appointment.

If mailing bills, send to: Mark W. Van Etten, Dallas Borough Tax Collector, P.O. Box 447, Dallas, PA 18612.

Send your news to The Post by e-mail.

thepost@leader.net

Digital photos welcome, too!

Deadline for submitted news is Wednesday at noon.

THANK YOU For Voting For

JOYCE DOMBROSKI-GEBHARDT

In the Primary for **DALLAS SCHOOL BOARD**

I will continue to support Act 72 Property Tax Relief for senior citizens and moderate income residents.

Paid for by the candidate

CLOCK

Continued from Page 1

sary of Rotary International, is scheduled to be dedicated at the Dallas Harvest Festival on September 18.

For those interested in supporting the fund-raiser, displays and order forms can be found at the Back Mountain Memorial Library, Roth's Jewelry Store, and Hilbert's the Tractor Store.



Ed and Pauline Roth, Dallas residents and business owners, donated the first \$5,000 to the clock fund and received the first miniature clock given by the Rotary Club of Dallas. The Roths wanted to show their appreciation to the community for the many years that area residents patronized their jewelry store.

DARLING & SONS' FARMS & GREENHOUSES
 "Growing Quality Is A Family Business Since 1930"
MEMORIAL DAY FLOWERS
 Geraniums • 12 Colors
 Bedding & Veg. Plants, Mixed Pots & Logs, Hanging Baskets, Spikes & Vinca Vines, Hibiscus, Patio Tomatoes, Mixed Deck Pots, Potting Soil, Peat, Pro Mix in bags or bales, Mulch & Much Much More!
 Buy From The Grower and Save! Low, Low Prices
 M-F 9-6 • Sat/Sun 9-5 **675-2080**
 Located 1/2 mile off Rt. 309, Dallas, Hildebrand Rd (200 yds. north of the Dallas Elementary School)

BELLES "Providing Quality Work Since 1957"
 CONSTRUCTION CO.
SIDING - National Award Winning Designs, Featured In Multiple National Publications.
ROOFING - Certaineed Select Shingle Roofer: Integrity Installation On All Projects.
WINDOWS - By Belles: Our Exclusive Plygem Custom Windows Combine Elegance & Performance. A Must See ... For Your Home.
 For A Free Estimate Call **824-7220**
 Like Our Prices, Love Our Quality • Financing & References Available

STYLING SERVICES
 Color • Facials
 Perms • Highlights
 Waxes • Massage
 Manicure & Pedicure
 Packages Available
 605 Main Road • Dallas, PA 675-4991

NEWS
 Coverage Area: The Post covers the "Back Mountain" area of Luzerne County, including the Dallas and Lake-Lehman school districts, and southern Wyoming County. We try to get to as many events as possible, but staff and space limitations make it impossible to cover everything. If you have news about your family, town or organization, please send it to us and we'll try to get it in. Photographs are welcome. You may send items to the address above, or drop them off at the Uni-Mart in Dallas near the intersection of Routes 309 and 415. E-mail is the best and most timely method for submissions. Send items (digital photos, too) to: thepost@leader.net
 Deadline is noon, Wednesday prior to publication.
 Corrections, clarifications: The Post will correct errors of fact or clarify any misunderstandings created by a story. Call 675-5211.
 Have a story idea? Please call, we'd like to hear about it.
 Letters: The Post prints letters of local interest. Send letters to: Editor, The Post, 15 N. Main St., Wilkes-Barre PA 18711. All letters must be signed and include a phone number at which we can reach the author.

THE POST
 TIMES•LEADER Community Newspaper Group
 15 N. MAIN ST., WILKES-BARRE PA 18711 • 570-675-5211
 thepost@leader.net
ADVERTISING
 Display Advertising Deadline: Mondays at 5 p.m.
 Call (570) 970-7101
 We have a variety of rates and programs to suit your advertising needs. The Post satisfies most co-op ad programs. Creative services at no charge. Combination rates with The Abington Journal, Clarks Summit, and the Sunday Dispatch, Pittston available.

WANT A PHOTO?
 We can provide color prints of photos taken by our staff. Only 8x10 is available, at \$25 for the first print and \$15 each thereafter. Prepayment required. Call, mail in, or stop by to order.
CIRCULATION
 Orders for subscriptions received by Friday at noon will begin the following week. Please inform us of damage or delay, call 829-5000.
 The Post (ISSN - 1551-1650)
 Published weekly by Cypress Media, LLC. \$26 per year, in Luzerne and Wyoming counties (PA). Call 829-7141 for rates to other areas. Periodicals postage paid at Wilkes-Barre, PA 18701-9998
 POSTMASTER: Send address changes to The Post, 15 N. Main St., Wilkes-Barre PA 18711
 ©COPYRIGHT 2005. Entire contents copyrighted. All rights reserved. No part of this publication may be reproduced by any means without the express written consent of the publisher.