

Burning ordinance draft expected next month

By CHARLOTTE BARTIZEK
Post Correspondent

LEHMAN TWP. — The supervisors plan to have the draft of a burning ordinance ready for next month's meeting. Supervisor Dave Sutton has been studying rural burning ordinances in the area and around the country to come up with one "that suits Lehman Township."

"Some were too strict, some had nothing to say, but I did find out what 'putricibles' are," Sutton said with a laugh at the Oct. 18 meeting. Solicitor Jon Roger complimented Sutton on his research and the comprehensive nature of the draft ordinance.

There is no burning ordinance now and Sutton said there have been abuses recently, especially around Oak Hill.

"We're definitely having a problem around Oak Hill where the lots are a lot smaller," he said. "Our intention is to put some conditions on burning such as the size of the fire, duration, and maybe time restrictions after 9 or 10 p.m."

Jamie Adamshick, a land owner, said the evening hours are the safest time to burn. "Dew-up is usually at dusk, so I fire up at night. If you have a fire at 3 p.m. you're more likely to have it go out of control than at night when the moisture will keep it down."

Sutton said the ordinance would not affect farmers and were intended to be "generalized ordinances" and that the township did not have the manpower to issue burning permits or even strictly enforce ordinances. "We just need to have something that people can refer to."

The supervisors think stop signs placed at three Lehman intersections are a small inconvenience to put up with considering the safety benefit.

"Most residents around Oak Hill using the new stop sign to turn onto 42nd Street from Idetown Road feel much safer now," said Sutton.

Additional stop signs have been placed on Old Route 115 at the intersections with Mountain View Drive and Hayfield Road. "People coming out of Penn State campus have been taking the stop signs more seriously," noted police chief Howard Kocher, now that it is a

"We're definitely having a problem around Oak Hill where the lots are a lot smaller."

Dave Sutton
Supervisor

four-way stop.

Cars making the turn onto Route 115 from Mountain View Drive to get to Lake-Lehman High School can safely come out onto Route 115 knowing traffic coming over the hill from Route 118 will have to stop, said Barbara Simms. "Now I don't feel like I'm going to get hit," she said.

In another safety related matter, the supervisors are looking into placing weight restrictions on trucks using township roads. Roadmaster Doug Ide said large tractor trailers travel the roads frequently, threatening the berm and soundness of the blacktop. He says some trucks can't make the sharp turns on Hillside Road and have even damaged stone walls near the roadway.

In conjunction with the county commissioners, the supervisors plan to limit truck weights on township roads except for local deliveries.

In other business:

- The supervisors said Lehman will hire another part-time police officer.

- The supervisors agreed to contribute \$1,500 to the Back Mountain Council of Governments towards cooperative or shared municipal services. They also authorized the COG to apply for a \$25,000 state grant along with the Back Mountain Business and Professional Association to study data and attract new jobs to the Back Mountain area.

- Elaine Mastruzzo, a property owner at Lake Silkworth, complained that the town's bus turnaround in the back of her property has been expanded over the years, creating a basin in the back of the property which repeatedly floods and does not allow her to "improve the property." Ide told her he would look into the matter, clear out the drainage area, and evaluate any other drainage possibilities for the road. Mastruzzo was relieved on Tuesday morning that Ide had already responded to her.



FOR THE POST/PETE G. WILCOX

Lake-Lehman's Queen

Marissa Mahle was crowned the 2004 Lake-Lehman Homecoming Queen during halftime of last week's football game. Last year's queen, Jackie Lovecchio, placed the tiara on Marissa while proud parents Shari Casterline and David Mahle looked on.

ST. THERESE'S

(continued from page 1)
ministry offices.

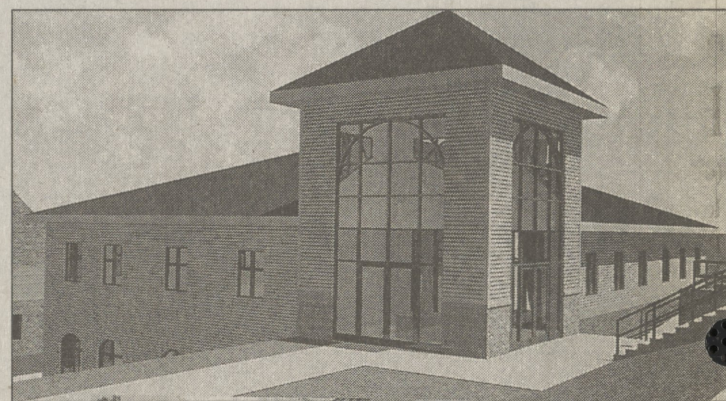
"We want our church to expand on its best quality," said Crynes, "and that is our quality of hospitality and sense of welcome. It's most exciting to see our congregation come alive and respond so well to meeting the future needs of this parish."

Rose Marie Taylor, chairman of the pastoral council, echoes the sentiments of Father Crynes. "I have a 15-year-old son who is very involved in the church. I think our generation not only needs to be good stewards of our present resources, but we also need to provide for the future so that our children can enjoy our labors as we have enjoyed this beautiful sanctuary built for us so many years ago."

With many improvements being made to the church and its surrounding grounds and facilities, none was deemed more important than the priority felt by master planning committee member Carol Kaleta and others. "We had a grand wish list," said Kaleta, "but the true grit of the project was to meet the needs of all of our people, not just the able-bodied ones."

Handicap access was a very high priority and a real eye-opener. The planners wanted people in wheelchairs and on walkers to be able to come to church and enjoy the services and programs.

"We love to do homebound calls to help all of our members feel a part of the church, but we will be excited and pleased to have them actually



This architect's drawing shows the new parish center that is planned to replace the existing rectory, behind the church.

come and be an active part of the church once again," Kaleta said.

"Our defining moment as a parish is recognized in the realization that St. Therese's is a welcoming community committed to our ministry," said Fr. Crynes. "How fortunate

we are to have a vital, interested people to help us move forward in our commitment to our faith and to each other. And to think we are only limited by our facilities, and that too will change as a result of this campaign for the future."

Lehman man faces child pornography charges

LEHMAN TWP. — A 34-year-old man was arrested on child pornography charges at his home Oct. 20.

Harold Leslie Saxe Jr. of Market Street had images on his computer depicting children nude and engaging in sex acts, state police said.

The Pennsylvania State Police Area II Computer Crime Task received information originating from the National Center for Missing and Exploited Children that Saxe was uploading child pornography on the Internet.

State police and the Lehman Township Police Department conducted a joint investigation and seized Saxe's computer.

Saxe was charged with sexual abuse of children, possession of child pornography and dissemination of child pornography, state police said.

He was arrested without incident and arraigned before District Justice James Tupper, at which time he was released on \$10,000 unsecured bail, state police said.

Fire department web addresses

Five local fire departments now have web pages where anyone who is interested may find out more about the departments and how to become a volunteer. They are:

- Shavertown: <http://go.to/shavertownfire>
- Trucksville: <http://www.trucksvillefire.com>
- Kunkle Fire & EMS: <http://home.usnetway.com/~kunkle>
- Harveys Lake Fire & EMS: <http://www.geocities.com/harveyslakefire>
- Northmoreland Fire: <http://www.geocities.com/station140>

STATEMENT OF OWNERSHIP, MANAGEMENT AND CIRCULATION

The Dallas Post, Publication Number 147720
Filing Date 10-14-04 Wednesday
52 Issues Published Annually
Annual Subscription Price \$26.00
15 North Main Street, Wilkes-Barre PA 18711
Owner: The Dallas Post, 15 North Main Street, Wilkes-Barre, Luzerne County, 18711 of which the sole stockholder is Knight Ridder, Inc.

Publisher: Patrick McHugh, 15 North Main Street, Wilkes-Barre, PA 18711
Editor: Allison Walzer, 15 North Main Street, Wilkes-Barre, PA 18711
Managing Editor: Dave Iseman, 15 North Main Street, Wilkes-Barre, PA 18711

Stockholders owning or holding 1% or more of total outstanding shares:

- Southeastern Asset Management, Inc., 860 Ridgeway Blvd., Suite 301, Memphis, TN 38119
- Harris Associates L.P., 2 North LaSalle Street, Chicago, IL 60602-3790
- AIM Trimark Investments, 5140 Yonge Street, Suite 900, Toronto, Ontario M2N 6X7
- Private Capital Management, 8889 Pelican Bay Boulevard, Suite 500, Naples, FL 34108
- T. Rowe Price Associates, Inc., Equity Research Department, 100 East Pratt Street, Baltimore, MD 21202-1008
- Barclays Global Investors, 45 Fremont Street, 17th Floor, San Francisco, CA 94105-2228
- Capital Research & Management, One Market, Steuart Tower, 19th Floor, San Francisco, CA 94105
- State Street Global Investors, Investment Research Department, 225 Franklin Street, Boston, MA 02110-2875
- Capital Guardian Trust Company, 333 S. Hope Street, 55th Floor, Los Angeles, CA 90071
- The Vanguard Group, 100 Vanguard Boulevard, Malvern, PA 19355
- Eubel Brady & Suttman Asset Mgmt., 7777 Washington Village Drive, Suite 210, Dayton, OH 45459
- U.S. Trust Corporation, 114 West 47th Street, New York, NY 10036
- JP Morgan Investment Management, 60 Wall Street, 11th Floor, New York, NY 10260-0060
- Morgan & Company, 1 Bush Street-800, San Francisco, CA 94104-4425
- Delaware Management Co., 2005 Market Street, Philadelphia, PA 19103
- Daniel H. Ridder, c/o Press-Telegram, 604 Pine Avenue, Long Beach, CA 90844-0003

Publication: The Dallas Post

| | Average No. Copies Each Issue During Preceding 12 Month | No. Copies of Single Issue Published Nearest to Filing Date |
|--|---|---|
| Total Number of Copies | 883 | 738 |
| Paid Outside County Mailed Subscriptions | 133 | 130 |
| Paid in County Mailed Subscriptions | 77 | 69 |
| Sales through Dealers, Carriers, Street Vendors, Counter Sales, and Other Non-USPS Paid Distribution | 338 | 377 |
| Total Paid and / or Requested Circulation | 548 | 576 |
| Free Distribution Outside the Mail | 4 | 4 |
| Total Free Distribution | 4 | 4 |
| Total Distribution | 552 | 580 |
| Copies Not Distributed | 331 | 158 |
| Total | 883 | 738 |
| Percent Paid and / or Request Circulation | 99.3% | 99.3% |

NEWS

Coverage Area: The Post covers the "Back Mountain" area of Luzerne County, including the Dallas and Lake-Lehman school districts, and southern Wyoming County. We try to get as many events as possible, but staff and space limitations make it impossible to cover everything. If you have news about your family, town or organization, please send it to us and we'll try to get it in. Photographs are welcome. You may send items to the address above, or drop them off at the Uni-Mart in Dallas near the intersection of Routes 309 and 415. E-mail is the best and most timely method for submissions. Send items (digital photos, too) to: thepost@leader.net. Deadline is noon, Wednesday prior to publication.
Corrections, clarifications: The Post will correct errors of fact or clarify any misunderstandings created by a story. Call 675-5211.
Have a story idea? Please call, we'd like to hear about it.
Letters: The Post prints letters of local interest. Send letters to: Editor, The Post, 15 N. Main St., Wilkes-Barre PA 18711. All letters must be signed and include a phone number at which we can reach the author.

THE POST

TIMES•LEADER Community Newspaper Group

15 N. MAIN ST., WILKES-BARRE PA 18711 • 570-675-5211
thepost@leader.net

ADVERTISING

Display Advertising Deadline: Mondays at 5 p.m.
Call (570) 970-7102
We have a variety of rates and programs to suit your advertising needs. The Post satisfies most co-op ad programs. Creative services at no charge. Combination rates with The Abington Journal, Clarks Summit, and the Sunday Dispatch, Pittston available.

WANT A PHOTO?

We can provide color prints of photos taken by our staff. Only 8x10 is available, at \$25 for the first print and \$15 each thereafter. Prepayment required. Call, mail in, or stop by to order.

CIRCULATION

Orders for subscriptions received by Friday at noon will begin the following week. Please inform us of damage or delay, call 829-5000.

The Post (ISSN - 1551-1650)

Published weekly by Cypress Media, LLC. \$26 per year, in Luzerne and Wyoming counties (PA). Call 829-7141 for rates to other areas. Periodicals postage paid at Wilkes-Barre, PA 18701-9998.
POSTMASTER: Send address changes to The Post, 15 N. Main St., Wilkes-Barre PA 18711

©COPYRIGHT 2004. Entire contents copyrighted. All rights reserved. No part of this publication may be reproduced by any means without the express written consent of the publisher.