

Kitchen

(continued from page 3)

typifies what has happened to kitchen design. The solution, of course, is to seek out a professional designer.

Practical Concerns
All Rutt designers agree that whatever style homeowners might want to borrow from favorite locales around the world, initial interviews and thorough preliminary plans and sketches are important first steps.

"We don't believe in formula design," explains Jim Bilotta of Bilotta Home Center, NY. Marmaroneck and Briarcliff, NY. "There is no magic plan that works for everybody. It makes a huge difference how a family shops, cooks and eats. That will dictate if they will need extra freezer space, two dishwashers, an additional sink, cabinets that will store baking paraphernalia, pretty china, trays, small appliances, giant bags of kibbles for the family dog, or whatever..."

He also cites such examples as more refrigerator space for those who like fresh foods; an indoor grill for those who prefer low-fat foods; and multiple work stations for families, who arrive home with hunger pangs and need room for everybody to pitch in and prepare dinner in a hurry.

"These are some of the practical considerations, and finding the right answers to them is just as essential to a successful kitchen as the aesthetics," he notes.

Lawn

(continued from page 4)

label advises how many square feet the product will cover (see sidebar for calculating square feet of lawn area); any portion not used will be just as effective next year, if stored in a dry area.

- Which type—Any reputable lawn and garden retailer will be able to recommend the best fertilizer mixture for a particular time of the year. In the fall, turfgrass needs less nitrogen (N) but higher ratios of phosphorus (P) and potassium (K) to encourage root growth and harden the grass plants for the coming winter.

- Proper application—To assure uniform coverage with either a broadcast spreader or a drop spreader, follow these simple steps:

- 1) Adjust the spreader application dial to one-half of the fertilizer bag's recommended setting and make the first application in an up-and-down pattern, covering the entire lawn.

- 2) Begin the second application immediately, in a left-to-right pattern, and continue over the entire lawn. (Hint: Use two small flags to mark the beginning and end of each row as you apply fertilizer.)

On the cover

A display at Top Value Kitchens, Shavertown, is a study in contrasting tones and textures.

PHOTO BY CHARLOTTE BARTZKE

Tile

(continued from page 5)

doors and the outdoors.

"Green" Pavers
Tile's and pavers' easy care and long wear are well-known attributes, but increasingly, their environmental talents are being appreciated as well. As it turns out, these heavy-duty flooring products help save energy because they store the sun of the heat for release during the cooler evening hours and capture night breezes for release during the day, thus cutting down on both heating and air conditioning bills.

And, of course, these products will last as long as the house stands, unlike synthetics, which have become the bane of landlords. In fact, many landlords now refuse to accept such materials.

By contrast, Summitville has found a way to utilize Feldspar, a waste material from tile manufacturing, to produce those pavers so admired for their good looks. Previously, Feldspar wound up in mountainous landfills in many Southern states.

All three are weathered stone looks that capture the texture and medleys of color reminiscent of ancient mountain paths.

Often, the tile and paver floors are continued onto patios and into courtyards, marrying the in-

DON'T DELAY! IT'S TUNE-UP TIME!

NOW IS THE TIME TO SCHEDULE A PRE-SEASON HEATING UNIT CLEAN-UP AND TUNE-UP FOR WINTER!

PHONE: 822-8158
C. W. SCHULTZ & SON INC.

The Service Experts Since 1921!

PLUMBING • HEATING • AIR CONDITIONING
WATER TREATMENT • SEWER & DRAIN CLEANING

C. W. SCHULTZ & SON INC.
216 Parrish Street, Wilkes-Barre Phone: 822-8158 • FAX: 824-8509



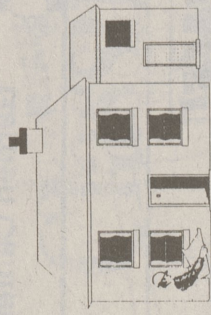
"At Your Service — Around the Clock, You'll Like the Way We Do Things."

- ✓ 24 hour Emergency Services — Montour employees are on duty 24 hours a day, 7 days a week.
- ✓ Free Tank Leak Protection
- ✓ Equipment Installation
- ✓ Premium "A" Plus Heating Oil
- ✓ Professional Duct Cleaning
- ✓ Oil Powered Water Heater Smart Buy Program
- ✓ Comfort Club Budget Plan
- ✓ Equipment Installation
- ✓ Heating Oil payments spread over a 12 month period with interest applied to credit balance.

MONTOUR
OIL SERVICE COMPANY

Call us at 570-883-9343
1-888-666-8687
(MONTOUR)

LOANS



WE CAN HELP WITH THE CASH YOU NEED.
HOME IMPROVEMENT LOANS
• NO APPLICATION FEE
• NO CREDIT REPORTING FEE
• NO APPRAISAL FEE

HOME EQUITY LOAN *8.50% APR

TOLL FREE 1-888-214-9132

GRANGE NATIONAL BANK

11 OFFICES
SERVING YOU LOCALLY AT:

BACK MOUNTAIN 696-6958
EDWARDSVILLE 283-4462
WILKES-BARRE 208-1500

BOWMANS CREEK 298-2163

SINCE 1907

Member FDIC
*REQUIRES AUTO DRAFT FROM GRANGE NATIONAL BANK account and loan amount in excess of \$10,000.00

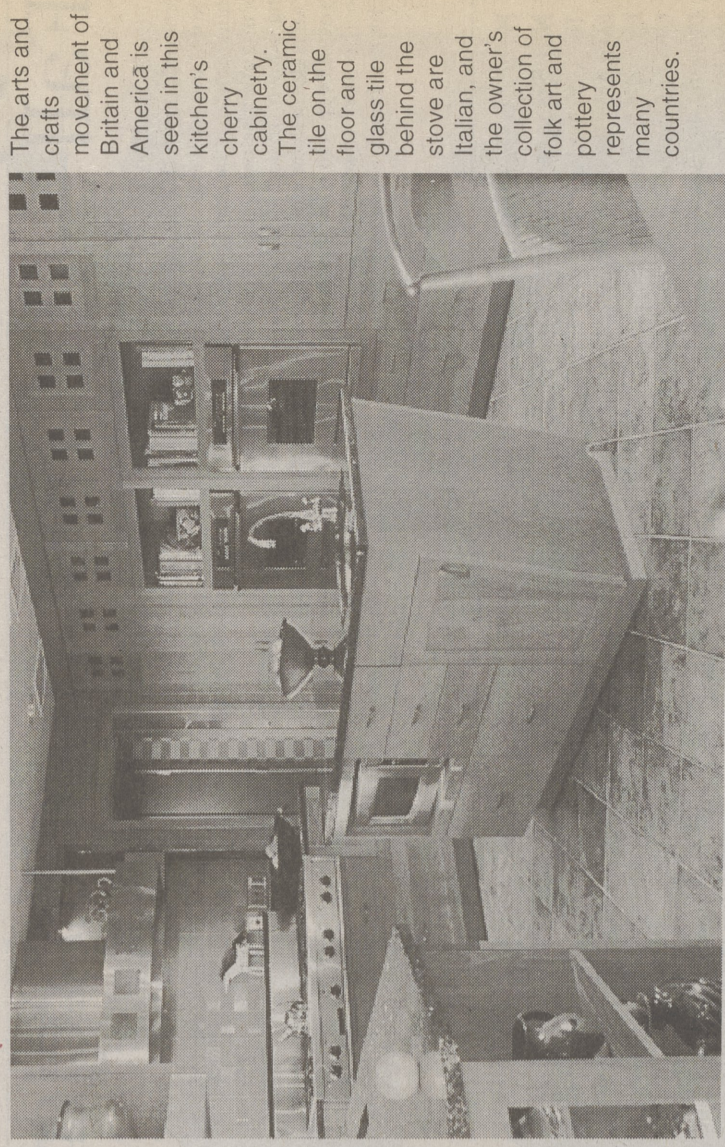
Equal Housing Lender
EQUAL OPPORTUNITY LENDER

Today's kitchen celebrates many lands and cultures

By Lis King
(HT)—Kitchens are getting more fascinating all the time thanks to well-traveled homeowners, who have learned to appreciate design elements from around the globe.

So say Rutt designers, whose award-winning kitchens are frequently inspired by their clients' fondness for the classicism of Florence, the timeless simplicity of Kyoto or the elegance of English country houses. However, they are quick to point out that while these global influences are important starting points, today's kitchens inevitably veer off in many directions.

"While Americans may admire the mellow warmth of a Provencal or Tuscan farmhouse, they also want superb function, and they want a kitchen that is tailored to the particular way they live," explains designer/architect Allen Sayles, who heads Rutt of Lafayette in California. "So we might wind up with a kitchen featuring cabinetry designed and crafted in the idiom of French or English antiques, a professional stainless steel range, gleaming granite counters, a Finnish soapstone stove that doubles as a fireplace, and a collection of Staffordshire platters."



The arts and crafts movement of Britain and America is seen in this kitchen's cherry cabinetry. The ceramic tile on the floor and the glass tile behind the stove are Italian, and the owner's collection of folk art and pottery represents many countries.

TOP VALUE KITCHENS

17 E. Center Street, Shavertown, PA
675-7083



Aristokraft Kitchen & Bath Cabinetry Sale

No Minimum Purchase.
Offer ends 10/31/00

10% OFF

OPEN
Mon. & Tues. 8-6
Wed., Thurs., & Fri. 8-8, Sat. 9-3

