

CALENDAR

Calendar items are published free of charge. Generally, items will appear the two weeks prior to an event. To submit material, send or bring it to The Dallas Post, P.O. Box 366, Dallas, PA 18612 or bring it to our office at 45 Main Road, Dallas. Deadline is Friday at 3 p.m.

COMMUNITY

THE ANTIQUE AND CLASSIC BOAT SOCIETY INC. - 9TH ANNUAL BOAT SHOW. Northeastern Pennsylvania Chapter. May 27 & 28. 10 a.m.-5 p.m. at the Grotto Marina, Harveys Lake. The public is invited to attend. Free admission.

RUMMAGE SALE, at the Trinity Presbyterian Church, Dallas, Friday, June 2 from 9 a.m. to 4 p.m. Bag Day on Saturday, June 3 from 9 a.m. - 12 p.m. \$2 a bag.

RUMMAGE AND BAKE SALE, at Alderson United Methodist Church, Pole 108, Harveys Lake. Fri., June 2 from 10 a.m. - 4 p.m. Sat., June 3, from 10 a.m. - 2 p.m.

OLD TIME COUNTRY STYLE PANCAKE & SAUSAGE SUPPER- at St. Paul's Lutheran Church, Shavertown, Sat. June 3. Serving from 4:30 - 7 p.m. Menu: Pancakes, sausage, scrambled eggs, real PA maple syrup, various fruit toppings for both pancakes and ice cream. Donation, \$5. For tickets call 675-3859 or you may purchase them at the door.

ICE CREAM SOCIAL, at the Sweet Valley Fire Co. Aux., Main Rd., Sweet Valley on Sat., June 3 at 4:30 p.m. Hot dogs, hamburgers, pork bbq, french fries, homemade ice cream, cakes and beverages will be served.

SLIGHTLY READ BOOKSHOP, Bk. Mt. Memorial Library, Mon. & Wed., 1-8 p.m., Sat., 10-5 p.m. Fiction, non-fiction, children, juvenile, classic, cookbooks, mystery, sci-fi, travel & others at great savings.

NEWSPAPERS for blind and elderly daily on WRKC-FM 88.5, 10 a.m.-noon. Call Tom Carten at 826-5811 for information.

FRIDAYS-BACK MOUNTAIN FREE MEDICAL CLINIC, at St. Therese's Church, lower level, corner of Pioneer and Davis St., Shavertown, welcomes all who are in need of medical care by competent doctors, nurses and staff. If uninsured or underinsured, we care to help. 6:30 p.m. Confidentiality assured.

BINGO every Thursday night at the Kunkle Fire Hall, Rte. 309, Kunkle. Jackpot, Early Birds, 5:45 p.m. regular games 7:15 p.m.

CLUBS/GROUPS

ACOA (Adult Children of Addictions) and other dysfunctional families Support Group meetings are held for one hour every Tuesday at 8 p.m. and every Saturday at 6:30 p.m. at Clearbrook Bldg, Wyoming Avenue, Forty Fort. Attendees should park and enter from rear of building.

2ND MON. EACH MONTH THE NURTURING COMMITTEE OF WYOMING VALLEY HABITAT FOR HUMANITY will sponsor a series of general interest courses, 7-9 p.m. at St. Stephen's Episcopal Church, 35 S. Franklin St., Wilkes-Barre. All courses are open to the public.

IDETOWN UM CHURCH COUPLES CLUB meets every third Saturday of each month Jan. through June and Sept. through Dec. New members are always welcome.

S.P.A.W.N. (Society of Poets and Writers of the Northeast) meeting. Third Sat. of each month. Call Steve at 639-2320 for more information.

ALCOHOLICS ANONYMOUS meeting in the Back Mountain: Tuesday, 7:30 p.m. (OD) at the Lehman Fire Hall, Lehman

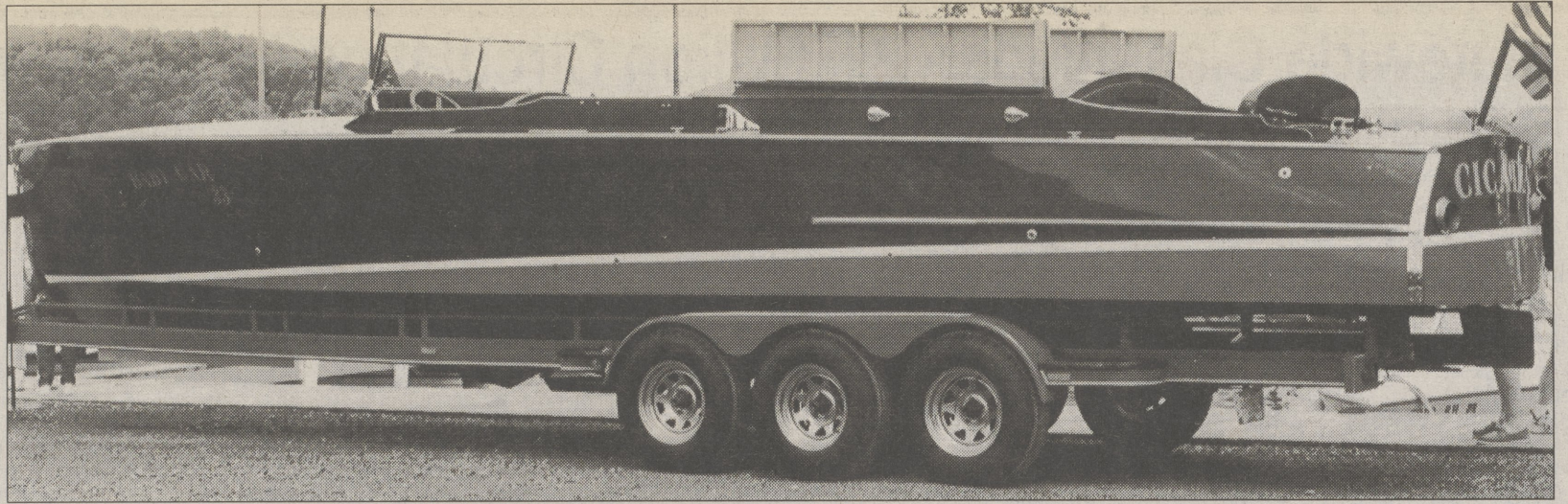
Wednesday, 7:30 p.m. (OD) at Loyallville Methodist Church.

Friday, 8 p.m. (OD) at St. Therese's Church Rectory, Pioneer and Davis St., Shavertown. OD: Open discussion; OS, Open speakers.

SUPPORT GROUP MEETINGS, for ACOA (Adult Children of Alcoholics) and other dysfunctional families are held every Sun., 8 p.m. Blue doors of Mercy Center at College Misericordia, Dallas. For more information, call the Help Line at 829-1341.

REUNIONS

LAKE-LEHMAN HIGH SCHOOL CLASS OF '90 REUNION, Our 10 year reunion is set for Sat., Nov. 25, and we're looking for everyone who graduated in 1990. Please contact Denise Thompson-DuBois at (732) 818-1008 or Michelle Lankwarden at (323) 822-9331 or E-mail us at lehman90@hotmail.com.



Antique, classic boats on display

The Northeastern Pennsylvania chapter of the Antique and Classic Boat Society, Inc. will hold its 9th annual boat show this weekend at the Grotto Marina, Harveys Lake. The show will take place

Saturday and Sunday, May 27 and 28, from 10 a.m. to 5 p.m. each day. There is no admission charge, and the public is welcome to attend and view the marvelous water craft that will be on display.

OUTDOORS

GREATER WYOMING VALLEY AUDUBON SOCIETY Houck Sanctuary - a visit to the Houck Sanctuary in Nescopeck, Sat., May 27 to see birds, wildflowers, and improvements that attract wildlife. Primarily a walking tour. Meet at 7:30 a.m. at either the Dallas United Methodist Church parking lot or the Park & Ride across from K-Mart by Blackmun St. Call Sandy Goodwin at 639-5785 to register. **Sunday Morning Birding in Kirby Park** - Sun. May 28. Jim Shoemaker will lead the outing in search of both woodland and river birds. Meet at 8 a.m. on the north side of Market Street near the dike in Kingston. This opportunity to learn to identify native birds is repeated the fourth Sunday of each month.

Auto Tour - to see birds and wildflowers, Sat., June 3. This trip will visit wetlands and other natural areas in Luzerne and Lackawanna Counties. Meet at 7 a.m. at the Dallas United Methodist Church parking lot. Call Bob Wasilewski at 829-6230 to register.

SUSQUEHANNA TRAILERS HIKING CLUB. Unless otherwise noted, hikes meet at Kirby Health Center, 71 N. Franklin St., Wilkes-Barre. Verify if weather is questionable. 654-3323.

YMCA HIKES, All hikes meet at the YMCA, Dunmore at 9:15 a.m. Bring water, food and sturdy footwear. 343-5144. or email info@HikingJane.com

OUTDOORS

SIERRA CLUB EVENTS Unless otherwise noted, hikes meet 8 a.m. at the Dunmore YMCA parking lot, Exit 55 off I-81.

FRANCES SLOCUM PARK All children age 6 and under must be accompanied by an adult to any program. Unescorted children will be sent back to their campsites. **Incredible Insects,** Friday, May 26, 8:30 p.m. at the Campground Amphitheater Meet PA's tiniest wild-life-bugs. Learn about the world of insects as you view the live critters and mounted specimens.

On the Right Track, Sat., May 27, 3 p.m. at the Campground Amphitheater. For children ages 5-10. Come and join in some tracking and stalking activities around the campground.

BLACK BEARS OF PA, Sat., May 27 at 8:30 p.m. in the Campground Amphitheater. Join us for a short video and activities related to the Pennsylvania black bear.

Birdwalk For Beginners, Sunday, May 28, at 3 p.m. Bring your binoculars and field guides if you have them, (they're not required) and enjoy a leisurely look at our local bird life. Meet near the 3rd Pavilion.

Seasons of the Bat, Sunday, May 28, 8:30 p.m. at the Campground Amphitheater. Bring a friend and learn some interesting facts about our only flying mammal.

KIDSTUFF

Kirby Center 71 Public Square, Wilkes-Barre, 826-1100, or Ticketmaster, 693-4100 or www.kirbycenter.org.

Ringling Bros. and Barnum & Bailey Circus, 130th edition of "The Greatest Show on Earth." First Union Arena, Wilkes-Barre Township. May 31, June 1 and 2 at 7 p.m.; June 3 at 7 p.m.; and June 4 at 1 and 5 p.m. Tickets are \$35, \$19.50, \$15.50 and \$12.50. On sale at all ETM locations and online at www.etm.com. Call 1-888-386-8497.

MUSIC

CHICORY HOUSE concerts held in the community room of St. Stephen's Church, 35 S. Franklin St., Wilkes-Barre. Public information 825-8772 or www.chicoryhouse.org.

THE CULTURE CLUB meets Monday and/or Tuesday evenings at Evans Falls, Route 29. Piano, poetry and choral concerts. Admission is free, all are welcome. For information and reservations phone 298-2191.

NORTHEAST PA DOO-WOPP SOCIETY seeks new members. Meeting/social hour at Lisle's Lounge, Fox Hill Road, Plains Twp. first Tues. of every month, 7 p.m. for details call 842-0730 or 696-4325 nights.

THE CHORAL SOCIETY OF Northeastern Pennsylvania invites adult singers to join its Symphonic Chorus. Rehearsals are Mondays, 7 p.m. at St. Peter's Lutheran Church, Scranton or Tuesdays, 7 p.m. at the First Presbyterian Church, S. Franklin St., Wilkes-Barre. Membership is \$40. 969-1203.

EXHIBITS

WYOMING HISTORICAL & GEOLOGICAL SOCIETY, 49 S. Franklin St., Wilkes-Barre. Research library. Museum with permanent exhibit on the anthracite era and local American Indians. 822-1727. www.whgs.org.

STUDIO III CULTURAL CENTRE, Luzerne will exhibit for the month of May Incredible Sculptures by John T. Medashewski, May 2-May 31. A reception for the artist will be held Sat. May 6, from 6-9 p.m. For information call 331-7824.

MACDONALD ART GALLERY, COLLEGE MISERICORDIA - Gallery hours are Tues., Wed., and Thur., 12-5 p.m., 6-8 p.m.; Friday, 12-5 p.m.; Sat., and Sun, 1-5 p.m. Closed Monday. For more information call 674-6250.

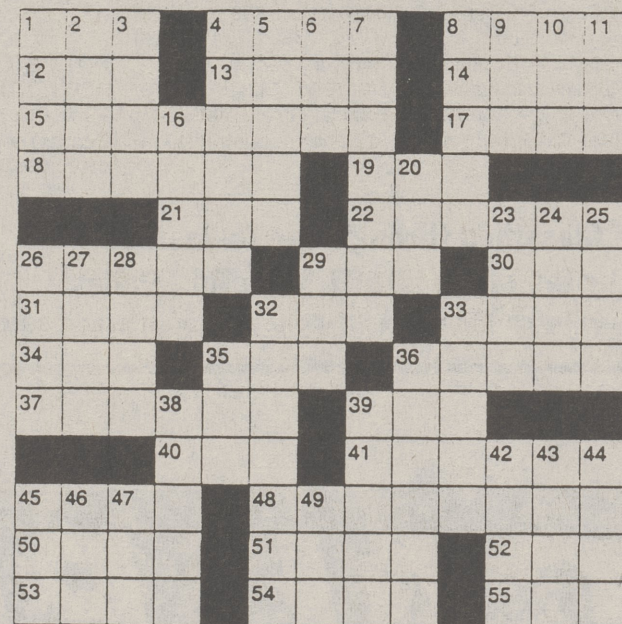
IMAGES IN PHOTOGRAPHY, April 15 through May 30. A Meet the Artist Reception will be held on Sat, April 15 from 6-8 p.m. The exhibit is free and open to the public. **MIXED MEDIA EXHIBITION,** by local potter and photographer Skip Sensbach, June 4-30. A gala Meet the Artist reception will be Sunday, June 4, from 2-5 p.m.

HEALTH

RECOVERY INC.: Self-Help Mental Health Since 1937, Wednesdays, 7-9 p.m. Shavertown U.M. Church, 163 N. Pioneer Ave., Shavertown. This is a self-help group for people who suffer from anxiety, fear, panic attacks, depression, obsessions and other nervous symptoms. For more information, 331-2422.

CROSSWORD CORNER

- | | | | | | | |
|----------------|-----------------|-----------------|-----------------|-----------------|------------------|------------------|
| ACROSS | 1 Furnishings | 61 Upright | 104 Evergreen | 14 It comes | 49 Conflict site | 87 Barbie's |
| 6 Pop's | 63 Reserve | 105 "Oh, woe!" | tree | before com | 50 French | boyfriend |
| neckwear | 64 Inventor | 106 Purse | 105 "Oh, woe!" | 15 "Don't You | 88 In thing | 88 In thing |
| 12 Compute | Rubik | 106 Purse | 106 Purse | Know" | 99 Lyman or | 99 Lyman or |
| 15 Damp and | 65 Castle and | 109 Ultimate | 109 Ultimate | singer | Lincoln | Lincoln |
| chilly | Cara | 109 Ultimate | 109 Ultimate | 16 Architectur- | 91 Common | 91 Common |
| 18 Wind | 66 A mom-ism | 117 Inc., in | 117 Inc., in | al features | possessive | possessive |
| instrument? | 71 Showed | England | England | 17 Most | 95 Elegance | 95 Elegance |
| 20 Formula | 72 Baudelaire's | 118 Mauna — | 118 Mauna — | minute | 96 Restaur- | 96 Restaur- |
| 21 '83 Duran | buddies | 119 Anaigesic | 119 Anaigesic | 19 Durban | ateur Shor | ateur Shor |
| Duran hit | 120 More | 120 More | 120 More | dough | 97 Manage to | 97 Manage to |
| 22 Summer on | 73 Chemical | 121 Nationality | 121 Nationality | 24 Essential | miss | miss |
| the Riviera | compound | 121 Nationality | 121 Nationality | 25 Two or | 98 Allison on | 98 Allison on |
| 23 A mom-ism | 74 Like some | 122 Deli | 122 Deli | more eras | "Peyton | "Peyton |
| 27 Actress | jackets | 122 Deli | 122 Deli | 26 Act like a | Place" | Place" |
| Massen | 75 Emerald or | 123 Curbed the | 123 Curbed the | humming- | 99 Lowest | 99 Lowest |
| 28 Over again | aquamarine | 123 Curbed the | 123 Curbed the | bird | deck | deck |
| 29 Seal school | 77 Alma — | 124 Scout | 124 Scout | 62 — "do-well | 100 Barcelona | 100 Barcelona |
| 30 Medical | 78 Suitable | 124 Scout | 124 Scout | 63 Confident | bravo | bravo |
| suffix | 81 Decorative | 124 Scout | 124 Scout | 64 TV award | 101 Rosalind | 101 Rosalind |
| 31 Singer Kim | vase | 124 Scout | 124 Scout | 65 Among | Russell role | Russell role |
| 32 Where to | 82 Rounded | DOWN | DOWN | 66 Richard's | 102 Until now | 102 Until now |
| drink glogg | roof | 1 Extinct bird | 1 Extinct bird | vape | 104 Linen in the | 104 Linen in the |
| 36 — emptor | 83 Harsh | 2 Desire | 2 Desire | 67 Barbara's | beginnin'?" | beginnin'?" |
| 38 Siren | 84 Fireworks | 3 Biblical | 3 Biblical | partner | 105 Confined to | 105 Confined to |
| 41 Racer | 85 A mom-ism | 3 Biblical | 3 Biblical | 35 Morning | a cot | a cot |
| 42 Leaf part | extra | 4 Giant | 4 Giant | moisture | 106 Conrad of | 106 Conrad of |
| 43 Fire sign | 90 Gandhi | 5 "Spartacus" | 5 "Spartacus" | 36 Prepare | "Diff'rent | "Diff'rent |
| 45 A mom-ism | legend | 6 Sailors | 6 Sailors | pasta | Strokes" | Strokes" |
| 52 Stimp's pal | wrapped it | 7 Sleep | 7 Sleep | 37 — Dhabi | 70 Fall | 70 Fall |
| 53 Flexible | up | 8 "Stroker —" | 8 "Stroker —" | flower | 107 Help a hood | 107 Help a hood |
| 55 Service | 92 Nomad | 8 "Stroker —" | 8 "Stroker —" | 71 Hit hard | 108 Greek | 108 Greek |
| member? | pad | 9 Damone or | 9 Damone or | 75 Kick | sandwich | sandwich |
| 56 Chianti | 93 Border on | Dana | Dana | 76 Cassowary | kin | kin |
| color | 94 Flair | 10 G's | 10 G's | 77 Maestro | 110 Unwell | 110 Unwell |
| 57 TV chef | 95 "Tristram | address | address | Zubin | 111 Old card | 111 Old card |
| Martin | Shandy" | 11 Arizona city | 11 Arizona city | 78 Mislead | game | game |
| 58 Kukia's | author | 12 Parched | 12 Parched | 79 Homeric | 112 New Deal | 112 New Deal |
| colleague | 98 Pavarotti's | 13 Uproar | 13 Uproar | character | agcy. | agcy. |
| 59 Paladin | 100 Epps or | 46 Terse verse | 46 Terse verse | 80 Svelte | 113 Word on a | 113 Word on a |
| portrayer | Sharif | 47 In progress | 47 In progress | 82 Unit of | pump | pump |
| | 103 Lacquered | 48 Every guy | 48 Every guy | 83 Overwhelm | 114 Asian ox | 114 Asian ox |
| | metalware | is one | is one | 86 Broadcast | 115 Canonized | 115 Canonized |
| | | | | 116 Siangy sib | Mile. | Mile. |
| | | | | | 116 Siangy sib | 116 Siangy sib |



- | | | | | |
|--------------------|--------------------|-------------------|-----------------|-----------------|
| ACROSS | 1 Close kin | 29 Pigs' home | 54 Never again | 25 Bring up |
| 4 Bruce's ex | 30 Pub offering | 31 Witnessed | 55 Bob's | 26 Pronto, on a |
| 8 Jupiter's | 32 Faux — | 33 "Diana" | longtime | memo |
| a.k.a. | 33 "Diana" | singer | partner | 27 Home or Olin |
| 12 Postal | 34 Literary | 34 Literary | 34 Literary | 28 Mad king of |
| Creed | collection | 2 Scottish island | 3 Bric-a — | literature |
| word | 35 Repair | 3 Bric-a — | 4 Scopes Trial | 29 Stan Getz's |
| 13 "East of | 36 Change | 4 Scopes Trial | 5 Wipe out | instrument |
| Eden" | 37 About 3 1/4 | 5 Wipe out | 6 Oft- | 32 He had |
| character | light years | 6 Oft- | tattooed word | a brush with |
| 14 Follow | orders | 7 Entomologist's | 8 Gags | greatness |
| orders | 15 What | 8 Gags | 9 Sapporo sash | 33 Scare |
| 18-, 22-, | 18-, 22-, | 9 Sapporo sash | 10 Doggy doc | 35 Retainer |
| 37-, and | 37-, and | 10 Doggy doc | 11 Storm center | 36 Video-game |
| 41- | 41- | 11 Storm center | 16 Board | parlor |
| Across are | Across are | 16 Board | 20 Path | 38 Pay out |
| 17 High flier | 17 High flier | 20 Path | 23 Get your | 39 Courtier in |
| 18 Indiana's | 18 Indiana's | 23 Get your | second | "Hamlet" |
| NBA team | NBA team | second | wind | 42 N.Y., e.g. |
| 19 Ram's | 19 Ram's | 42 N.Y., e.g. | 43 Entreaty | 44 Elusive |
| ma'am | ma'am | 43 Entreaty | 44 Elusive | 45 Intimidate |
| 21 Pirouette | 21 Pirouette | 44 Elusive | 45 Intimidate | 46 Downsize |
| pivot | pivot | 45 Intimidate | 46 Downsize | 47 Geese's |
| 22 Friendly spirit | 22 Friendly spirit | 46 Downsize | 47 Geese's | flight |
| 26 Let | 26 Let | 47 Geese's | 47 Geese's | pattern |
| | | 48 Make eggs | 48 Make eggs | 49 Soup holder |

Answers to Crossword, Challenger on page 12

challenger

DIRECTIONS:
Fill each square with a number, one through nine.
• Horizontal squares should add to totals on right.
• Vertical squares should add to totals on bottom.
• Diagonal squares through center should add to total in upper and lower right.

20									
		8							22
		2							24
						8			24
									9
18	21	14	26	8					

Today's Challenge
Time 10 Minutes
29 Seconds
Your Working
Time Minutes
Seconds

JOS. CHERMAK, INC.
SUZUKI • SAAB
Clarks Summit, PA 1-800-386-6676

WET BASEMENT?
B-DRY SYSTEM
824-8808
The B-DRY® SYSTEM has been proven to be SO UNIQUE & SO EFFECTIVE at eliminating basement leakage, that it has been awarded a United States Government Patent! FREE ESTIMATE.

Every Game! All Season!
RED BARONS
Only on Flagship Station
wick
Listen on the Web!
www.wick-am.com
1340 AM • 1400 AM • 1550 AM