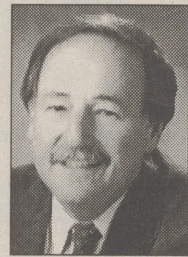
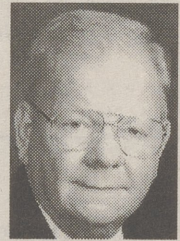


**MOVERS AND SHAKERS**

**John C. Metz**, Chairman and CEO of Metz Enterprises, was recently named one of the top fifty power players in the foodservice industry by Nation's Restaurant News. Metz Enterprises, with headquarters in Dallas, PA, is the umbrella corporation under which Metz and Associates, Ltd. and Northeast Concepts, Inc. operate. Metz and Associates, provides dining management services to clients such as hospitals, nursing homes, school districts, colleges, and corporate offices. Northeast Concepts, Inc. operates seven T.G.I. Friday's restaurants in Pennsylvania and New Jersey as a licensed franchisee.



**Joseph "Red" Jones**, former Luzerne County Commissioner, recently joined Convergence Technologies, a division of Northeastern Communications, Inc. as director of new business development.



Company vice president Thomas O'Donnell stated that Jones will be providing business solution in the networked voice, data, video, and Internet environments. Jones' prime objective will be to develop partnerships and new business in these environments.

**John M. Vaida**, chair of the fine arts department at Wyoming Seminary, has been honored by the Pennsylvania Music Educator's Program (PMEA) with the Distinguished Service Award.

Vaida, a resident of Shavertown, holds the Doris L. Patrick chair in fine arts at Sem where he directs the 126-voice Chorale and the award-winning 28-voice Madrigal Singers. Under his leadership, the Wyoming Seminary choral program has developed into one of the leading independent-school programs in the eastern United States. He has participated in the World Symposia on Choral Music in Sweden, Finland, Estonia and Austria, and was nominated for inclusion in "Who's Who in International Music."

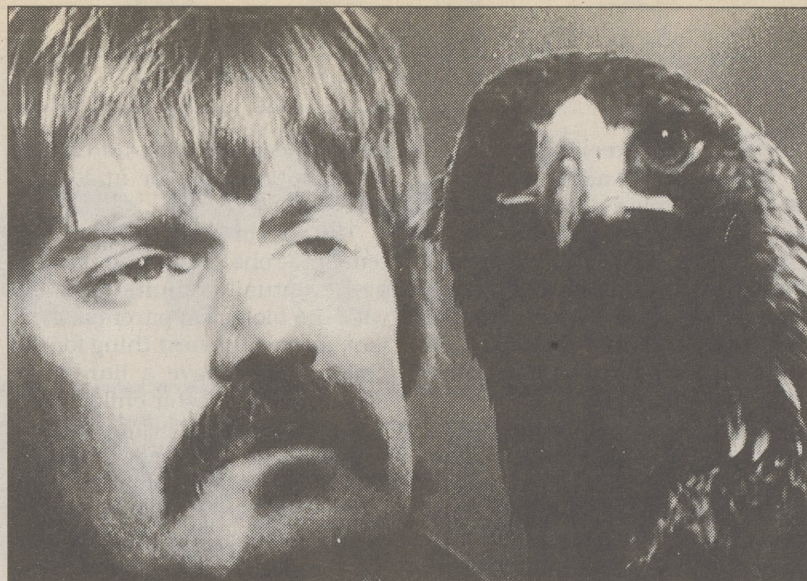
Vaida also has developed programs that link educators at the secondary, college and university levels. In addition to overseeing the choral program at Wyoming

Seminary, Vaida also oversees activities at the Performing Arts Institute of Wyoming Seminary, the school's summer program in music and performing arts. He has been instrumental in bringing world-class teachers and performers to the Wyoming Valley. A native of Connecticut, Vaida is a graduate of Westminster Choir College, where he received his bachelor's degree in 1973. He holds a master's degree from Marywood College.

**Charles Ghilani, Ph.D.**, associate professor and program chair for the B.S. Surveying and A.S. Surveying Technology programs at Penn State Wilkes-Barre, was nominated and voted in as an American Congress on Surveying and Mapping Fellow. Fellowship is bestowed upon individuals who have displayed outstanding accomplishments in the field of surveying and mapping and Ghilani was recognized for his contributions to the society and profession.



Dr. Ghilani, Sweet Valley, holds a Ph.D. and M.S. in Civil and Environmental Engineering from the University of Wisconsin-Madison, and a B.S. degree in mathematics and education from the University of Wisconsin-Milwaukee. Currently, he is working on *Elementary Surveying* with Dr. Paul R. Wolf. In addition, Ghilani has been developing Internet courses for surveying students and professionals since 1997.



Bill Streeter and a golden eagle.

**Birds of prey featured at Audubon dinner**

"Close Encounter with Birds of Prey" will be the featured presentation at the annual meeting and banquet of the Greater Wyoming Valley Audubon Society. The event will be held at 6:30 p.m., Wednesday, June 7, at the Knights of Columbus in Luzerne. Bill Streeter, Director of the Delaware Valley Raptor Center, will present a program close up and personal with live hawks and owls. The Delaware Valley Raptor Center is dedicated to providing humane and professional care for injured raptors.

The cost for dinner is \$16 if reserved before May 14 and \$20 if reserved between May 14 and May 27. Reservations should be sent to GWVAS, P.O. Box 535, Dallas, PA 18612. For information, call Sandy Goodwin at 639-5785.

**Girl Scout carnival May 6 at Camp Louise**

Girl Scouts, Penn's Woods Council invites the public to a carnival on Saturday, May 6 from 2 p.m. to 7 p.m. at Camp Louise in Berwick. The carnival is free and open to the public. The day will feature games, food, trading post yard sale, a campfire sing-a-long and other fun. Girls wishing to find out more about the Girl Scouts are encouraged to attend and will be able to register for fall 2000 membership. For more information about the Carnival and directions to Camp Louise call 1-800-227-6129.

**Your Sports & News items are welcomed at The Post**

**RELIGIOUS SERVICES**

**BACK MOUNTAIN HARVEST ASSEMBLY** - 340 Carverton Rd., Trucksville, 696-1128. Pastor, Daniel S. Miller. Christian Education for all ages, 10:00 a.m. Worship 8:30 a.m. and 11:00 a.m. Wed., 7 p.m., "Genos" youth service. Midweek home groups; call for days and times. Weekday prayer 6:30-7:30 a.m. Visitors welcome.

**DALLAS UNITED METHODIST CHURCH** - 4 Parsonage St., Dallas, 675-0122. Rev. William D. Lewis, Pastor. Morning Worship 10:30 a.m., Sunday School at 9 a.m.

**PRINCE OF PEACE EPISCOPAL CHURCH**, 420 Main St., Dallas, 675-1723. The Rev. Robert A. Nagy, Rector. Sunday Holy Eucharist 8 & 10 a.m. Adult Forum 9:15 a.m.; Sunday School pre-K thru high school 10 a.m. Midweek Holy Eucharist Tues. 7 p.m. & Thurs. 10 a.m. Both are healing services on the second Tuesday and Thursday of the month. Bible Study Tues. 7:30 p.m. All are welcome!

**SHAVERTOWN UNITED METHODIST CHURCH** - 163 N. Pioneer Ave., Shavertown. 675-3616. Pastors: Rev. Douglas and Janet Bryant Clark. Music Dir., John Vaida. Saturday Services: 5:30 p.m.; Sunday Services: 9 a.m., Family oriented Service: 11 a.m. Traditional Service in the Sanctuary. Sunday Child Care Provided. Visitors expected. PHONE-A-PRAYER 675-4666.

**ST. PAUL'S LUTHERAN CHURCH** - 196 N. Main St., Shavertown. Sat. Worship 5:30 p.m.; Sunday Worship 8:30 a.m. and 11 a.m. Sunday School 9:45 a.m. Phone 675-3859 or e-mail: stpaul@epix.net for more information. Everyone welcome! Rev. Charles H. Grube, Pastor.

**SENIOR MENUS**

Senior Citizens Centers sponsored by the Luzerne/Wyoming Counties Bureau for the Aging offer hot noon meals Monday through Friday to people 60 years of age or older. Donations from participants are gratefully accepted and needed in order to expand this program.

The following is the menu for the week of May 1, 2000. All meals include margarine, milk and coffee.

**MONDAY** - Irish beef stew with vegetables, butternut squash, buttermilk biscuit, chocolate pudding

**TUESDAY** - Roast turkey with gravy, whipped potatoes, bread stuffing, roman vegetable medley, cranberry sauce, whole wheat bread, applesauce

**WEDNESDAY** - Baked lasagna with tomato sauce, carrots, hot peach compote, italian bread, orange sherbert

**THURSDAY** - Italian hoagie, lettuce and tomato, mayonnaise, hearty vegetable soup, fruit mix, tomato juice, oatmeal raisin cookie

**FRIDAY** - Baked fish florentine, parsley boiled potatoes, wax beans, spinach, lemon, whole wheat bread, tapioca pudding

Tell our advertisers you saw them in The Dallas Post. They'll appreciate it, and so will we.

**NORTHEAST JUNIOR PLAYERS presents**

**HEY HO PINNOCHIO Family Musical**

May 8 in Shavertown  
1:30 p.m. & 7 pm.  
St. Therese's Theatre,  
Pioneer Ave.  
ADMISSION: \$5  
BOX OFFICE: 675-4333

**COOK'S PHARMACY**

- Computerized Prescription Service
- Russell Stover Candies
- Greeting Cards
- PA Lottery Tickets
- Newspapers
- Magazines

159 N. Memorial Hwy., Shavertown, PA

**675-1191**



Get a World of Financial Services When You Visit Us at Back Mountain.

**Back Mountain Financial Center 570-675-0213**

30 Memorial Highway  
Dallas, PA

**Lobby Hours:**  
M-Th 9 am - 4 pm  
Fri 9 am - 6 pm  
Sat 9 am - Noon

**Drive-Up Banking:**  
M-Th 9 am - 5 pm  
Fri 9 am - 6 pm  
Sat 9 am - Noon

24 Hour Drive-Up ATM Banking

When you're looking for a source for all your financial needs, you don't have far to go. That's because we're celebrating the grand opening of our new Back Mountain Financial Center. Please accept our invitation to tour our Financial Center and let us show you a complete range of financial services — from checking, online banking, CDs and loans\*, to ways to save for college and retirement. Are you ready to discover the Financial World? It's a lot closer than you think.

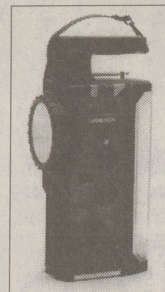
Visit us by May 12, open a new account, and you may be eligible to receive one of these or other fine gifts:\*\*



Bill Blass 25" Pocket Cruiser on Wheels



Windsor Portable CD Player



Windsor Lantern AM/FM Radio



George Foreman Salton Grill

\* Subject to credit approval.

\*\* Offer valid on new accounts opened April 15, 2000 - May 12, 2000, only at Back Mountain Financial Center. Gift levels vary based on type of account opened and minimum balance requirements. Tax liability, if any, is sole responsibility of person receiving gift. No cash substitutes. No warranties except for those of manufacturer if any. Deposit accounts must be opened with non-First Union funds to qualify for gift offer. Offer may be modified or discontinued at any time without prior notice. For more details, visit the Back Mountain Financial Center. Must be 18 years or older. Maximum of three gifts per family. Personal accounts only.

©2000 First Union Corporation 0001079