



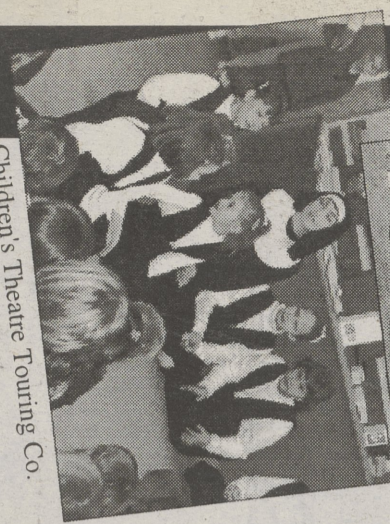
# MAJOR PERFORMING ARTS CENTER

"Successful Performing Arts Programs for the Whole Family!"  
**DANCE • THEATRE • VOICE • PIANO**  
**PRE-SCHOOL PROGRAMS**

MPAC Dance Classes



MPAC Dance Dept. Faculty & Dance Assistants



Children's Theatre Touring Co.

**MPAC FEATURES:**

- Dance Dept. 7 Award Winning, Certified, Senior Instructors, plus Dance Assts.
- **BALLET-TAP-JAZZ-POINTE**
- Music Dept. **PRO-VOCAL and PIANO**
- Theatre Dept. Childrens Theatre Classes, In-House Childrens Theatre Touring Co., and "home" to **NE PLAYERS**



1999 Ballet Production "Sleeping Beauty"

**DOZENS OF PERFORMANCES FOR THOSE WHO WISH TO PERFORM:**

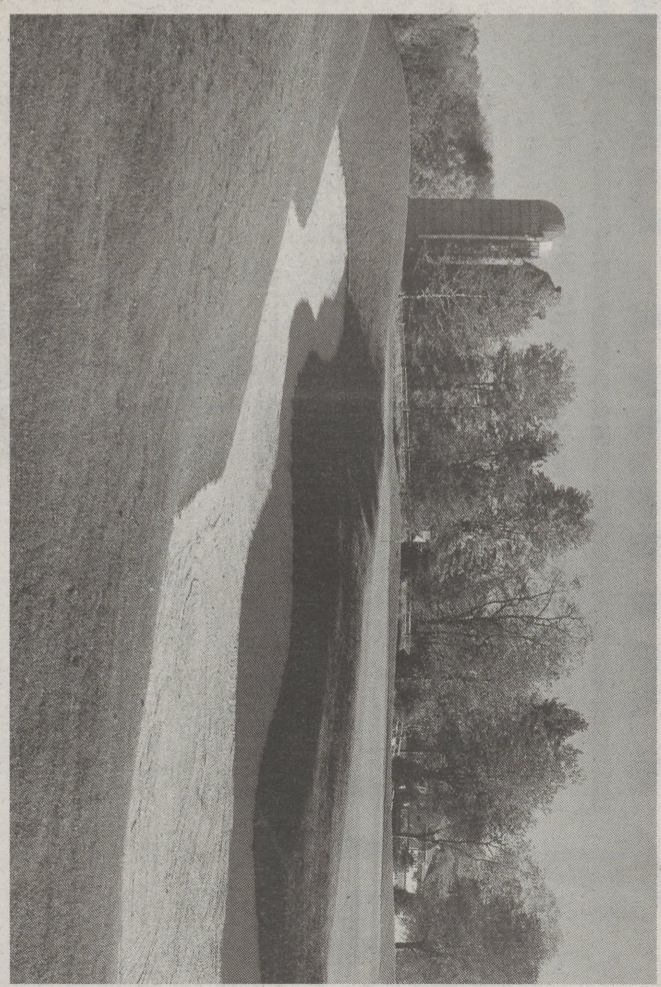
- Pro-staged Dance Revues
- Childrens Theatre opportunities
- Music Recitals
- Musical Theatre Events
- Community Shows
- Regional Productions
- Even Competitions for those interested in NY/LA agent connections.

**Kids Programs:** Mom & Me Club, KinderArts, Tots Tumbling, Friendship Club

**Accredited Professional Faculty**  
**Gina Major Ackerman • Director**

**CARVERTON RD. TRUCKSVILLE**  
**696-4755**

"Right in YOUR Backyard"  
 Convenient locations for all of the Back Mtn., Wyoming, and West Side Communities



**Expert golf. Family golf.**  
 (That's the beauty of Huntsville.)



Join this season, and the entire family will enjoy the Huntsville experience now - and for years to come. • Whether you're new to the game, or an experienced golfer, you'll find a professional learning environment, dedicated practice facilities, and a Junior Program to help you learn and grow. • Ranked as the 23rd in America's Top 100 Best Modern Courses (1997/*Golfweek*) and the 6th Best Course in Pennsylvania (1997/*Golf Digest*), you'll find it excellent for the expert - and fun for the entire family. • Play around at [www.golf-huntsville.com](http://www.golf-huntsville.com) or call 570-674-6532.



**HUNTSMVILLE GOLF CLUB**  
 LEHMAN, PENNSYLVANIA

©1999 Huntsville Golf Club - adjacent to the Penn State Lehman Campus.

Recreated above: *The Seventh at Huntsville*, a 410-yard par