

CALENDAR

Calendar items are published free of charge. Generally, items will appear the two weeks prior to an event. To submit material, send it to The Dallas Post, P.O. Box 366, Dallas PA 18612, or bring it to our office at 45 Main Road, Dallas. Deadline is Friday at 3 p.m.

COMMUNITY

- OCT. 8, ANNUAL FLU SHOTS, 10 a.m.-noon, Dallas Senior Citizens Center.
OCT. 9-10, RUMMAGE SALE, Lehman Church, Idetown, Fri., 9 a.m.-5 p.m.; Sat. 9 a.m.-12 noon.
OCT. 10, DORCAS RUMMAGE & BAKE SALE, 9 a.m.-1 p.m. St. Paul's Lutheran Church, 196 N. Main St., Shavertown, sponsored by Aid Assoc. for Lutherans Branch #5630.
OCT. 10, VOLUNTARY RECYCLING drop-off center for Lake Township accepting recyclables from 10 a.m.-12 noon at the township building.
OCT. 10, THE PIGEON HILL STATION, country blues band. Sweet Valley Fire Hall, Main Road, Sweet Valley, Adults \$5; children 6-12, \$2.50 and under 6 free.
OCT. 16-17, FALL RUMMAGE SALE, by Dallas U.M. Women, Fri., 9 a.m.-4 p.m.; Sat., 9 a.m.-12 noon (bag day) Refreshments and bake sale available.
OCT. 17 RABIES CLINIC, S.P.C.A. Fox Hill Rd., Plains Twp., Co-sponsored by the NE PA Veterinarians Assoc.
OCT. 18, CHICKEN BAR-B-Q, Noxen Vol. Fire Hall, Market St., Noxen.
OCT. 18, BINGO MARATHON, Northmoreland Fire Co., \$25 includes, 18 faces, snacks and drinks all afternoon and a dinner.

CLUBS/GROUPS

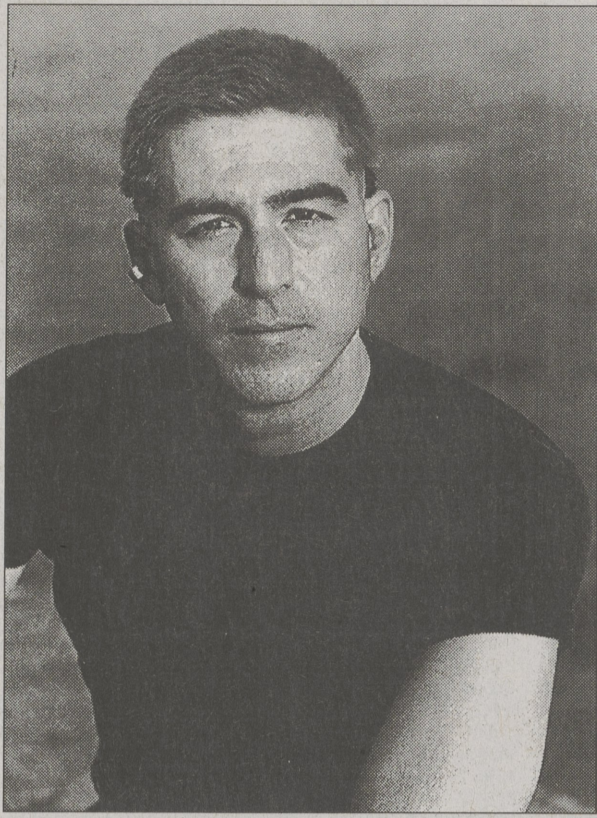
- OCT. 9, SCARY NIGHT OF DOOWOPS, at the VFW Post 4909, 403 Main St., Dupont.
OCT. 10, MT. GRANGE #567 AUCTION, 6 p.m. Browse and eat from 4 p.m.
OCT. 13, VIOLENCE AWARENESS NIGHT, hosted by Luzerne County Commission for Women, 6-8 p.m.
OCT. 18, 16TH ANNUAL RESPECT LIFE LUNCHEON, Wyo. Valley Chapter of Pennsylvanians for Human Life, 1 p.m.
OCT. 11 THROUGH NOV. 15, BUILDING A COLLECTION: A QUARTER CENTURY, Sordani Art Gallery, Wilkes College.
OCT. 13-NOV. 13, GROUP EXHIBITION: PASTEL IMAGES, Meet the artists, Oct. 18, 2-5 p.m.
OCT. 13-NOV. 13, GROUP EXHIBITION: PASTEL IMAGES, Meet the artists, Oct. 18, 2-5 p.m.

EXHIBITS

- OCT. 11 THROUGH NOV. 15, BUILDING A COLLECTION: A QUARTER CENTURY, Sordani Art Gallery, Wilkes College.
OCT. 13-NOV. 13, GROUP EXHIBITION: PASTEL IMAGES, Meet the artists, Oct. 18, 2-5 p.m.

Unconventional pianist to play Penn State

Richard Kastle, pianist of a strictly unconventional nature, will appear at Penn State Wilkes-Barre on Tuesday, Oct. 13 at 7 p.m. in the Hayfield Community Room at the campus in Lehman.



RICHARD KASTLE TO PLAY AT PENN STATE IN LEHMAN OCT. 13

Richard has a distinctly different style from his tuxedoed peers in dress and attitude (he has been sporting bright colors on short cropped hair for 10 years.) At age 8 Richard began playing the piano by ear, by age 10 he was performing his own virtuoso arrangement for the opening of the Tchaikowsky Piano Concerto No. 1. He has since studied with Ivan Davis, Larry Walz and Walter Scharf.

Kastle has appeared on television on "The Tonight Show" and "The Joan Rivers Show". "Entertainment Tonight," and CNN and has toured with Jay Leno as his opening act. One of his most recent appearances with Leno was in a 17,000 seat arena in Illinois where he stunned the audience with his performance of Beethoven's "Appassionata." His debut CD "Streetwise" was the top selling classical artist on the label.

Kastle has composed four tonal symphonies and seven piano concerti, as well as numerous sonatas and other virtuoso piano works. He is currently working on his fifth symphony at his home in Manhattan.

Penn State Wilkes-Barre's Cultural and Performing Arts programs are free and open to the public. For more information, call 675-9284.

KIDSTUFF

OCT. 15-17, SNOW WHITE & THE SEVEN DWARFS. NE Players & Junior Players Fall/Winter season, Darte Center, Wilkes University, Wilkes-Barre, 9:15 a.m., 11 a.m. and 6:30 p.m. \$4 and \$8. 675-4333.

STAGE

MUSIC BOX PLAYERS 1998 SEASON, 196 Hughes St., Swoyersville, Thurs., Fri., Sat., 6 p.m. open; 8 p.m. curtain; Sun. matinee, 1:30 p.m. open; 3:15 curtain. Adults \$30, \$22 children 12 and under. Show only, \$17 adults, \$15 students, \$13 children. 283-2195 or 1-800-698-7529.

OCT. 8-10, CABARET, Music Box Dinner Playhouse, 196 Hughes St., Swoyersville. Tickets now on sale for dinner/show or show only. Call 283-2195 or 1-800-698-PLAY for reservations. VISA, MasterCard and Discover cards accepted. Group rates, childrens' and students' prices available.

SPECIAL EVENTS

OCT. 8, CIVIL RIGHTS LECTURE, Rev. Richard Peddicord will discuss civil rights for homosexuals at a free lecture at College Misericordia at 8 p.m. in Walch Auditorium. For more info, call 674-6320.

OCT. 9 AND 10, Autumn by the Dam, 3rd annual craft show, 10 a.m. to 3 p.m. Huntsville Rd., Dallas (along the dam between Reservoir Rd. & Huntsville corners). Handmade crafts and cider and cookies for sampling. Prize Drawing.

OCT. 9-10, 15-18, 22-25, 29-31, LEHMAN ANNUAL HAUNTED BARN, Mt. View Drive, off State Rte. 118, behind Lehman Post Office. Fri.-Sat., 7-11 p.m. other days, 7-10 p.m. \$5. 674-5420.

OCT. 10, LUZERNE CO. FALL FARM TOUR, bus tour of 4 farms: Brace's Orchards, Dymonds Farm, Krispin Farm and Hillside Farms. Leaves Luzerne County Courthouse 9 a.m. \$15 includes lunch. 825-1701.

OCT. 14, 8TH ANNUAL EVENING FOR NE PA'S ENVIRONMENT reception, dinner and award presentations. The Woodlands Inn, Wilkes-Barre, 5:30 p.m. 408-4997.

OUTDOORS

OCT. 11 HERITAGE DAY, 10 a.m.-4 p.m. Enjoy weaving and spinning demonstrations, fire starting and primitive weapon demonstrations, visit a Revolutionary War encampment, musician Jim White entertains at 1 p.m. Lidten to author Diane Deming tell the story of Frances Slocum at 2 p.m. talk to the village blacksmith as he fashions tools and implements for everyday use. Visitor Center area.

OCT. 16, GHOST STORIES!! 7 p.m. Be prepared to be thrilled and chilled as the Voices of the Valley share their spooky tales. \$1 donation to benefit the Osterhout Library. Pavilion #1.

OCT. 17, SCOUT DAY, 9 a.m.-3 p.m. Pre-registration required. All Boy Scouts and Girl Scouts (excluding Daisies and Tiger Cubs) invited to participate in this day long event featuring activities related to environmental badges and awards. Visitor Center. Registration closes Oct. 9.

IN SCHOOL

OCT. 7, LEHMAN-JACKSON PTA, general monthly meeting, 7 p.m. in the music room. Come join the ranks of the many dedicated volunteers trying to make a difference in children's education.

OCT. 16, 1998-1999 CELEBRITY LUNCHEON SERIES, Henry Winkler, actor/producer. OCT. 23-25, 29-31, HARVEYS LAKE HAUNTED HALL, sponsored by Harveys Lake Fire Co., Pole #120. Oct. 23, 6-11 p.m.; Oct. 24, 5-11 p.m.; Oct. 25, 5-10 p.m. Oct. 29, 6-10 p.m.; Oct. 30, 6-11 p.m.; Oct. 31, 4-11 p.m. \$3. 639-1919.

HEALTH

OCT. 8, FREE DEPRESSION SCREENING, from 10 a.m. to noon, 1 p.m. to 3 p.m., and 6 p.m. to 8 p.m. Participants will complete a self screening questionnaire, view an educational video and have a confidential interview with a mental health professional. For more information, call 1-800-624-9902.

OCT. 12, BABY SITTING COURSE, offered by Mercy Hospital, Wilkes-Barre, Medical Arts Bldg., Middle Room, Lower Level. Class for boys and girls, 10-13 years old. 12:30 p.m.-4 p.m. Cost \$5. Snacks provided. To register 826-3353.

SIERRA CLUB

OCT. 11, SINGLES HIKE, Hike the west branch of the Lackawanna River. Fairly level six mile hike includes a visit to the hearty trout hatchery. Bring water, lunch, good walking shoes. Call Mort Malkin, 785-2042. Meet 11 a.m. at Fish Hatchery, Rt. 371, just east of the intersection of Rt. 670.

SIERRA CLUB

OCT. 18 FALL FUNDRAISER. Enjoy beautiful Lacawac Sanctuary, inspiring scenery, great food and sweet music. Call Sheila or Dave at 586-1930 for reservations, 2 p.m.-6 p.m. Tickets \$25 per person.

MUSIC

OCT. 9, NO STRINGS ATTACHED, jazz, blues, folk, Celtic. Tickets \$8 (\$7 for supporting members).

NOV. 7, THE GOO GOO DOLLS w/ guest will perform Wilkes University Marts Center, 8 p.m. Students/faculty \$12 (must show proper ID), public \$16. Tickets will be sold starting Mon. Oct. 5, from 10 a.m.-2 p.m. at Stark Learning Center, Wilkes University. Also available through TicketMaster 717-693-4100.

WYOMING VALLEY ORATORIO SOCIETY, invites singers to participate in its Dec. 5 concert. Call 288-6045 for audition information.

CROSSWORD CORNER

- ACROSS 1 Chili con - 6 October birthstone 10 Word before barrel or chop 14 Civet 19 With the normal voice 20 Biblical weed 21 Olive genus 22 "Rib" (1949 movie) 23 Author of 32 Across 25 He wrote "Daisy Miller" 27 Some are indelible 28 Spartan serts 30 Sioux Indian 31 Part in the play 32 "Miserables" 33 Ares in reverse? 34 Wood sorrel 36 "of the Pioneers" 38 Smith and Jolson 39 Galatea's beloved 40 "Put the - on Name" 42 Greek portico 44 He penned "Paradise Lost" 47 Expressive movement 49 "Persuasion" author 53 Fully grown 54 "Two Years

Grid for crossword puzzle with numbers 1-54.

- ACROSS 1 Temperate 5 "An Essay on Man" author 9 Kitten's comment 12 Birthright barterer 13 One of Ben Cartwright's boys 14 Geological period 15 Post-diet 16 Makes confetti 17 0 18 Dagwood's neighbor 19 Cousteau's milieu 20 Avoid a bean ball 21 Abbott's first baseman 23 Addressee 25 Get back 28 Axilla 32 Use 33 Tolerate 34 Get snug 36 Squeal 37 Keep tabs on 38 Become one 39 DEA VIP 42 Verily 44 Lions' hangouts 48 Wiend an ax 49 Boo-Boo's buddy 50 Exam format 51 Playwright Levin 52 "East of Eden" character 53 Use a paper towel 54 Poodle designation 55 Gis' eatery 56 Requisite DOWN 1 Network 2 Land in the water 3 Hideaway 4 Elevator's kin 5 Clergy member 6 Comic-strip pooch 7 Tropical fruit 8 Type units 9 Options list 10 Leib's pop 11 Base on balls 20 Over-simplified 22 Hardly flat 24 Spout from the soapbox 25 Skeddaddled, e.g. 26 She raised Cain 27 State of matter 29 "Great Expectations" hero 30 Berlin's "What'll -?" 31 X rating 35 Pooh's asinine pal 36 Suits 39 IOU 40 See 17 Across 41 Vacationing 43 Hollywood clasher 45 Ontario's neighbor 46 Scruff 47 Rosebud, e.g. 49 Sweet potato

Large crossword puzzle grid with numbers 1-125.

Answers to Crossword, Challenger on page 12

challenger THE INTERNATIONAL CROSSNUMBER GAME

DIRECTIONS: Fill each square with a number, one through nine. Horizontal squares should add to totals on right. Vertical squares should add to totals on bottom. Diagonal squares through center should add to total in upper and lower right.

Small crossword puzzle grid with numbers 1-20.

Call 675-5211 to Advertise

Steven's Town & Country Cleaners Country Club Shopping Ctr. • 675-0468 We'll Spoil You! We treat you as someone special. You can see it in the friendly smile that greets you at the counter. You know it in the cheerful way we handle special requests. You'll notice the difference in our first-class drycleaning, too. Come in today...let us spoil you. Steven's Town & Country Cleaners Check out our New Store Hours Monday - Friday 6:00am - 7pm • Sat. 7am - 5pm The Professional Edge • The Personal Touch

Oldies on AM Radio Sound Better! Goodtime Oldies WICK am 1340 / am 1400 www.wick-am.com