

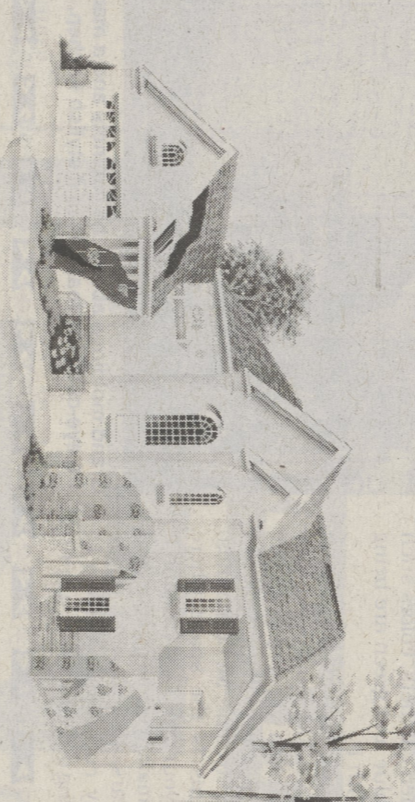
Home insulation can be much more than just walls

Every year as residential utility bills rise and energy prices increase, homeowners look for ways to reduce costs. One simple solution is to take a closer look at your home insulation.

First, look at the basics of heating and cooling. Remember, heat flows naturally from a warmer to a cooler space. Heat loss results both from thermal conduction and air infiltration. During thermal conduction, heat is lost through the exterior envelope or "shell" of the house. Points of heat loss include wood studs, sheathing, gypsum board, drywall and external siding such as brick, fiber-cement, stone or vinyl.

Use High R-Value Insulation

To combat heat loss, homeowners can install a variety of products to help win the energy battle and save money. The first product to consider is wall sheathing insulation. Wall sheathing insulation resists heat flow, keeping your home warmer in winter and cooler in the summer. It provides a thermal blanket around your home to reduce the amount of heat that flows out of, or into, your house. The higher the R-value, the better the insulation.



been that they are subject to damage from installation, handling and wind conditions. These problems not only slow the installation process, they also pose the threat of wind tears or blowoffs, which require repairs or replacements.

A quality house wrap will limit the intrusion of outside air and the exit of inside air, creating an "air tight" house. In selecting a house wrap, look for the following performance factors:

- Microperforation to contribute to a desirable air-exchange rate (too "air tight" a house falls short of a desirable air-exchange rate of 0.6 per hour);
- Humidity/water vapor

"migration" to reduce condensation potential in the walls during winter.

- UV inhibitors to minimize sun damage during construction; and
- Ease of application

The roof is another important consideration in your insulation plans. In the summer, heat from the sun can cause very high roof deck temperatures, allowing the heat to radiate throughout the entire house. Heat buildup must be relieved by ventilating the underside of the roof deck. In the winter, condensation caused by inefficient and inefficient ventilation will decrease energy efficiency. For a roof to perform to its full capacity, proper control of

heat, moisture and humidity buildup is a necessity. Under-the-shingle ridge vent systems used in conjunction with proper eave vents require no electricity — only the natural convective flow of air. The nylon matrix material in a vent system allows air to pass through while keeping the rain, snow, dust and insects out, and enabling the entire attic to be ventilated.

Remember, wall insulation alone cannot provide your full insulation needs. An energy efficient design and a combination of many insulation products working together will make your home more comfortable and help cut energy consumption — as well as costs.

Everything has its place in the kitchen and bathroom

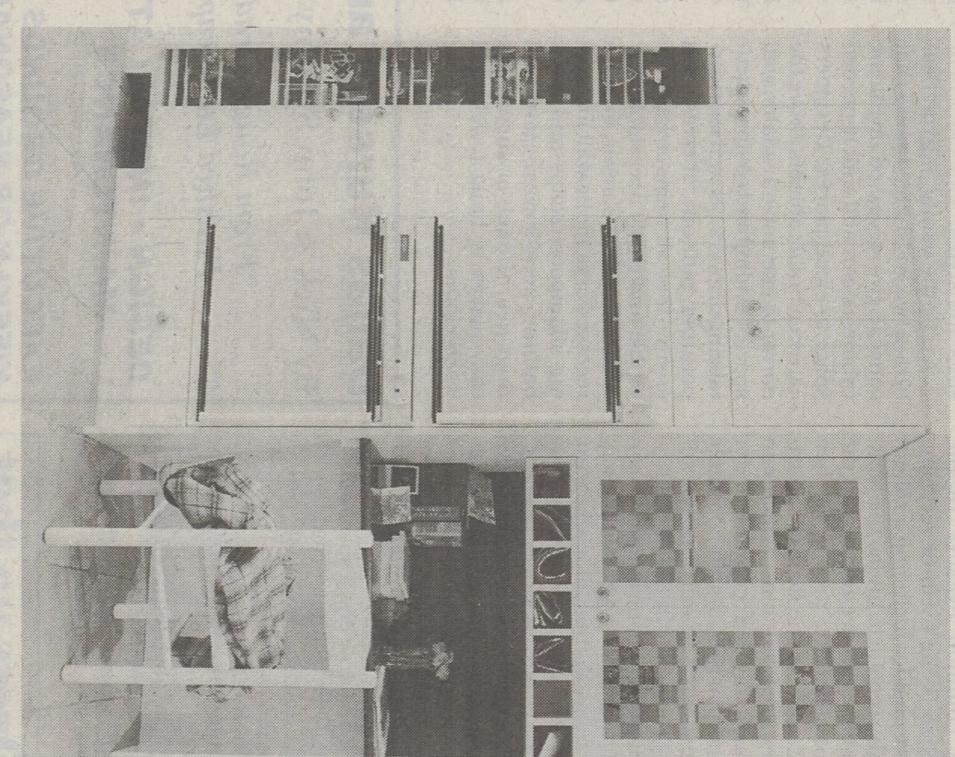
Storage in a kitchen or bathroom is truly a challenge, since organizing one's equipment and supplies is basic to an orderly life.

That's why when you are considering remodeling your kitchen or bathroom, you must plan what suits your needs best...your goal is to improve the potential of every cabinet and every inch of space.

According to the National Kitchen & Bath Association (NKB), the choices you make in storage design should fit your lifestyle. For instance, families that bake and cook frequently need plenty of room for food processors, mixers, blenders, etc. Consider a countertop appliance garage, which could provide a spot to keep small appliances such as a toaster or coffee grinder within easy reach, but out of sight the remainder of the time.

Open shelves on an island or on corners of base cabinets are excellent places to keep and arrange your cookbooks.

Don't forget built-in cutting boards and removable chopping blocks that can be installed between the countertop and drawer for easy use. Base cabinets designed with built-in vertical dividers can provide organized storage and easy access to cookie sheets and serving trays. Pot lids



Mail slots above a desk area and pull-out pantry shelves keep everything organized in your kitchen.

can also be kept neatly arranged and handy.

Years ago, the walk-in pantry was essential for storing the bounty of summer's harvest — from canned tomatoes to peaches to vegetables. But today's kitchens rarely boast enough space to accommodate such storage. Instead, a pantry cabinet makes it possible to stock up on frequently used items, take advantage of sales or promotions, or simply cut down on the necessary trips to the supermarket.

Options include tall, columnar pullout units on either side of a refrigerator and wire-coated baskets and bins that pull out on heavy-duty rollers.

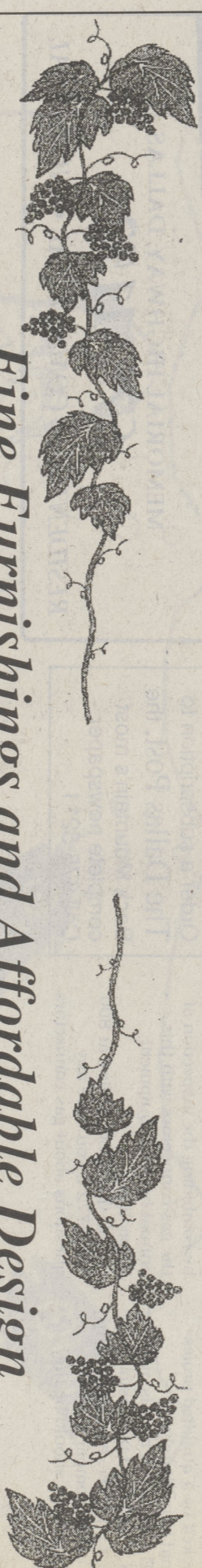
Not to be overlooked in the kitchen, too, is cold storage. Another cold storage item great for entertaining is a wine cooler. Conventionally tucked away under a counter or in a walk-in pantry, the cooler may be glass faced to hold enough beverages to serve a

"In kitchens with more than one cook, or in large kitchens, it's sometimes a good idea to have more than one refrigerator," says Dan Lerner, a Certified Kitchen Designer and Certified Bathroom Designer with Morris Black and Sons, Inc., Allentown, Pa. "There is an open range of possibilities, including having a tall refrigerator in one part of the kitchen, a base freezer in another, and a base refrigerator in an island workstation."

Continued on page 12

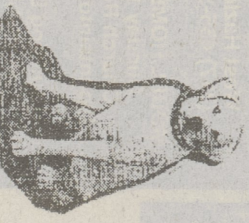
- Bark Mulch
- Peat Humus
- Garden Mix
- Compost
- Topsoil
- Sand
- Driveway Gravel
- Decorative Gravels

Great Prices • Prompt Delivery • Any Amount
EDWARD'S LANDSCAPING SERVICE, INC.
 525 River Street, Forty Fort, PA 18704
 Visible from the North Cross Valley Expressway
 (717) 287-4329



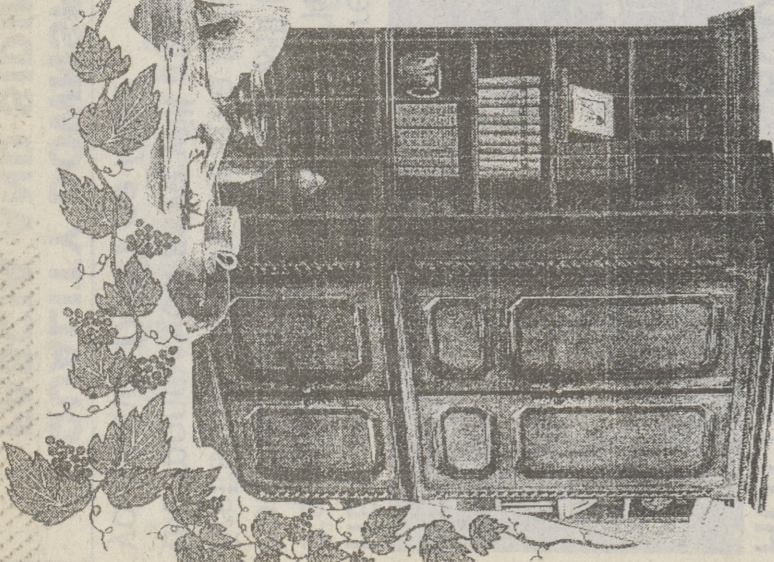
Fine Furnishings and Affordable Design Assistance for the way you live and work

- Free personal design assessment
- Design plans and drawings
- Better furniture and accessory lines
- In Home or Office Shopping
- Design on Line access
- Time and budget planning
- Whole project management
- Contractor contacts
- Residential and Commercial



Lindsay Design Center

Kingston, PA
 331-2140



Edward's Landscaping Service, Inc.
 525 RIVER STREET • FORTY FORT • 287-4329
WE'RE IN THE SWING OF THINGS

- LARGE ON SITE DISPLAY
- SITE PREPARATION AVAILABLE
- LARGE INVENTORY
- TRAINED SALES STAFF
- VISIBLE FROM THE CROSS VALLEY EXPRESS WAY

Mon.-Fri. 8:00 - 5:00 • Saturday 8:00 - 4:00

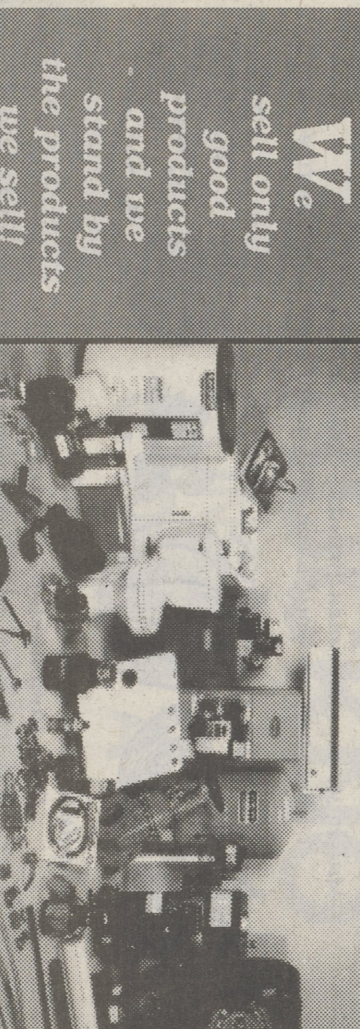
Full Deck Company

- Decks • Patios • Outbuildings
- Restoration Work • Remodeling
- Repair Work • Kitchens • Baths
- Roofing • Siding • Electrical Work
- Painting, etc.

(717) 696-2191 Fax: (717) 696-4309

Remodeling??? Building???

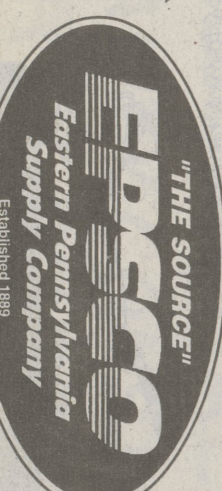
We're "THE SOURCE" For All Your Plumbing and Heating Needs! Serving the needs of Northeastern Pennsylvania for more than one hundred years.



We sell only good products and we stand by the products we sell!

- Milwaukee
- DEWALT
- MOEN
- Goulds Pumps, Inc.

700 Scott Street, Wilkes-Barre
 Phone: 828-1181
 Counter Hours: Daily: 7:00 A.M. to 5:00 P.M. Thurs. 8:00 P.M., Sat. 11:20:00 Noon
 Residential, Commercial and Industrial Plumbing • Heating • Water Systems • Pipe • Fittings • Valves • Building Materials • Tools • Mill Supplies



CALL US FOR THE DEALERS NEAREST YOU!