



Come See  
The Parade  
of Trees at  
Grotto Pizza  
Harveys Lake  
Starting Nov. 24

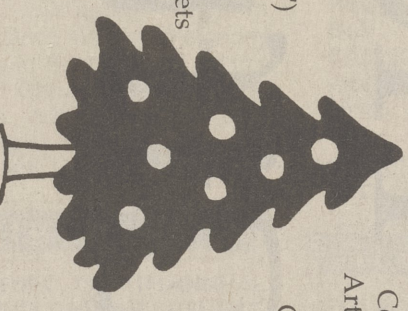
**Make Your Holiday Party  
Reservations Now!**

Cozy Fireplace and Lakeview Dining  
The Perfect Holiday Setting  
Parties of 20 to 120

Call 639-1264 Today!!

**OPEN TO THE PUBLIC**

- Fresh...
- Dish Gardens
  - Christmas Trees (5ft. to 20 ft.)
  - Wreaths (14"-72")
  - Sprays
  - Swags
  - Cemetery Blankets
  - Poinsettias
  - Cemetery Arrangements
- Logs
- Cemetery Cones
  - Artificial Wreaths
  - Candles
  - Crafts Supplies
  - Gift Items
  - Baskets
  - Flowering & Foliage Plants



**TOM TOBIN  
WHOLESALE  
FLORIST & GREENHOUSE**  
905 Wyoming Avenue  
Forty Fort, PA

Your Total Flower and Craft Supply House

**SWING INTO THE HOLIDAYS**

ENTER YOUR CHANCE TO WIN A COMPLETE HAMMOCK SET

Simply Enter Between Dec. 7 and Dec. 24. Free Delivery Just In Time for X-Mass!  
Over \$150.00 VALUE! No Purchase Necessary. One Entry Per Household

BIG DRAWING ON DECEMBER 24th!  
**(SANTA NOT INCLUDED)**



PENN STATE SEED IS  
YOUR HEADQUARTERS

FOR THE MOST  
UNIQUE GIFT IDEAS!

- WEATHER VANNES
- WIND CHIMES
- TEAK FURNITURE
- HAMMOCKS
- GARDENING TOOLS

**PENN STATE SEED Co.**  
A Growing Business Since 1938

Showroom • 906 Wyoming Ave. • Forty Fort • 287-9656

**Poison plants  
an exaggeration**

Some reports about poisonous holiday plants are as mythical as tales of Santa, says a Penn State horticulturist.

"Certain holiday plants believed to be fatal if eaten are relatively harmless, while others are truly toxic," says J. Robert Nuss, professor of ornamental horticulture in Penn State's College of Agricultural Sciences.

Many people persist in believing that the most popular Christmas plant, the poinsettia, is extremely poisonous.

"People who are allergic to the plant's milky sap can develop a rash if it gets on their hands," says Nuss. "But the poinsettia isn't fatal if eaten. If children or pets eat any part of the plant, at worst they might experience some stomach discomfort."

About 20 years ago, two Ohio State researchers fed large quantities of poinsettia parts to rats, with no ill effects. In 1975, the U.S. Consumer Product Safety Commission examined the poinsettia of the false charge that it's lethal if ingested.

The commission also related allegations that the berries of American mistletoe are fatal if eaten. "But that doesn't mean mistletoe berries are edible," says Nuss. "Mistletoe should be hung out of the reach of children and pets, and berries that drop should be removed from the floor immediately."

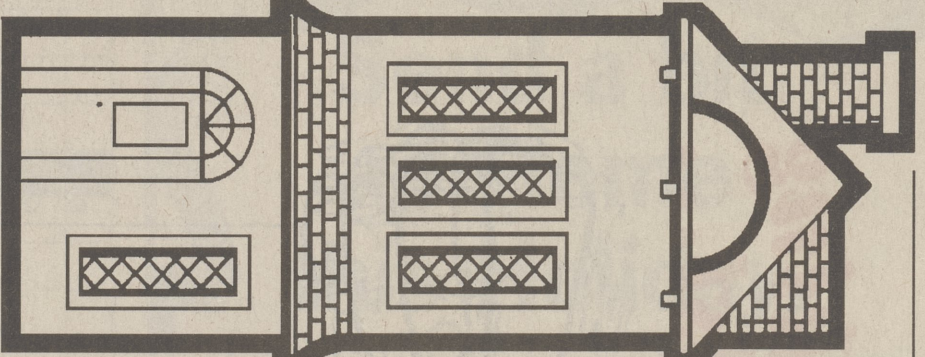
The Poison Information Center for Central Pennsylvania is at 800-921-9111.

**Doll Houses**

Just in time for Christmas!

Wooden hand built, outside completely painted and furnished, hardwood floors, and working windows.

- All Sizes
- Must be seen to be appreciated
- Reasonably priced



on display at  
**Sam Roberts  
Hair Fashions**  
170 N. Memorial Hwy.  
Shavertown, PA  
Mon-Sat 9-4  
675-1631

**Back Mountain  
GOLD & SILVERSMITH**

**Christmas Memories**



- FINE
- Diamonds, Amethyst, Aquamarine, Citrine, Emerald, Garnet, Iolite, Jade, Lapis, Bland and Colored
  - Onyx, Opal, Pearls, Peridot, Smokey Quartz, Ruby, Blue and Colored Sapphires, Topaz, Green, Pink, Blue Tourmaline, Turquoise, Blue Zircon, Beads, Masonic Spinel, Scarab, Marcasite and Chatham's Amber...

- Gift Certificates
- Major Credit Cards
- Specialty Wrapping

674-GOLD (4653)

It sets the mood like Holiday Music

**"Men's Night"**

December 18, 1997  
5 - 10 p.m. R.S.V.P.'s appreciated

1/4 Mile North Dallas Agway  
Holiday Hours: M-T-W-F-S 10-6 & Thurs. 10-7  
Sunday, Beginning Dec. 7th 12-5 or by appt.

**CHOCOLATE PUMPKIN CHIFFON PIE**

2 envelopes unflavored gelatin  
1 cup milk, divided  
3 eggs, separated, at room temperature  
1 can (30 ounces) pumpkin pie mix  
1/3 cup sugar  
1 10 inch baked chocolate cookie crust (recipe below)  
whipped cream or whipped topping for garnish

chocolate curls for garnish  
In medium saucepan mix gelatin and 1/2 cup milk; let stand 1 minute. Beat in egg yolks and remaining milk. Cook over low heat 5 minutes, until gelatin is completely dissolved, stirring constantly.  
Stir in pumpkin pie mix. Refrigerate about 1 to 1 1/2 hours, until mixture

mounts and holds its shape when dropped from a spoon. In large bowl, with mixer, beat egg whites and sugar until stiff peaks form. Fold in pumpkin mixture. Turn into cookie crust. Chill until firm. Garnish with whipped cream and chocolate curls.  
Makes 10 to 12 servings.

**Great Photo Gifts  
To Show You Care!**

**\$17.95** T-Shirts

**\$16.95** Mugs

**\$14.95** Mouse Pad

**\$24.95** Dallas Photo Shop "our Processing Headquarters in the Back Mountain" 675-8800

**\$27.95** Sweatshirts

See store for order form and details.

**Get In The Spirit of Christmas!**

**CHRISTMAS POINSETTIAS**

THE LARGEST SELECTION IN  
NORTHEASTERN, PA  
AT OUTLET PRICES

**KETTEL'S GREENHOUSE**

RT. 92 • RR1 BOX 103 • FALLS, PA 18615  
PHONE (717) 388-6423

Come visit our breathtaking display of these brilliantly colored flowers right where they are grown in a sunlight environment.  
**HUNDREDS TO CHOOSE FROM**  
**AVAILABLE IN MANY COLORS AND SIZES!**

- Including
- Red, White, pink, Marble and the Novelty Colors...
  - Pink Peppermint (Pink with Red Specks), Jingle Bells (Red Specks), Monet (Pink Bicolor)

**HANGING BASKET AND TREES**

Our Hours are Mon-Sat 8:00-4:30

