

## Cabinets making move out

More and more, kitchen design specialists are serving the "other room" markets across the country. From entertainment centers to wine storage to laundry rooms, consumers are finding that other areas of their home can be designed with cabinetry that blends attractively with other furnishings.

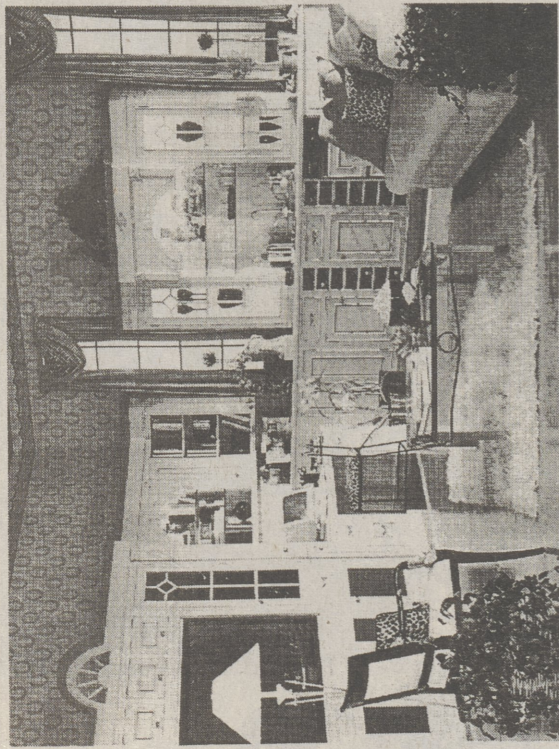
"Custom-built, storage areas are definitely a growing trend," explains Annette DePaape, CKD, CBD, ASID. "Consumers are looking for more 'open-space design.' If they take out walls when remodeling their kitchen, the adjacent room is sometimes also designed with pieces that integrate the look of furniture with cabinetry from the kitchen."

She notes that consumers today are more organized and want to put everything in its own place. For instance, media centers are not just for televisions. Custom-built pieces in family and great rooms for televisions, stereo systems and video equipment are turning ordinary rooms into ones that resemble concert halls, movie theaters and video arcades — all in one! "The cabinetry can then be closed off for formal entertaining, allowing for a piece that's flexible and multi-functional," DePaape adds.

In addition, many people are seeking designers to plan sophisticated and unique display areas that resemble furniture. Custom or stock cabinetry can be stacked and assembled with glass doors for collectibles or art. Interior lighting can be added to accent your treasures. These designs can create a beautiful visual interest for any room in the house.

Other areas growing in design are desk areas — whether it's a home office or living room space — for computers. "More and more people are working from home and doing household organization on the computer," DePaape says. "This opens up many opportunities for other room designs."

Long ago, utility rooms were planned simply with a tub, washboard and a clothesline. Today's room, however, has become one of primary importance to meet housekeeping needs. Custom cabinetry can be designed with fold-down or pull-out bins for sorting soiled laundry and separate countertop areas can be planned for pre-treating stains, sorting and folding. Storage for laundry supplies can also be incorporated above the washer and dryer. A special area for sewing or mending is also possible, complete with specialized shelving, divided drawers and enough table space for cutting out patterns.



**Cabinets aren't confined to the kitchen anymore. Here, built ins add function to a living area.**

The utility room can also be equipped with a space-saving, built-in ironing board for convenience, while a cleaning closet for storing brooms, mops, waxes, sponges and buckets is a great advantage for household management.

"Some consumers are even asking that the room incorporate space for such activities as gardening," DePaape notes. Elegant serving areas, such as bar centers, are being included in kitchens, family and living rooms at an ever-growing pace. The bar can be as simple or as elaborate as space will allow. Cabinetry can be designed to store liquor and glasses, as well as hold an icemaker or under-the-counter refrigerator.

American's love for wine is growing home, too, in the form of displays or storage areas just for these beloved beverages. The designer can incorporate an area in a bar, or a separate cellar display individual needs, as well."

## Carbon monoxide standards tightened

An increasing number of false alarms triggered by household carbon monoxide detectors have imposed significant burdens on emergency response personnel in recent years. In most (90 percent) of the carbon monoxide calls reported to utilities and fire departments, no carbon monoxide or levels too low to affect the average person were found, according to the American Gas Association (A.G.A.) and the Gas Research Institute, which conducted the study.

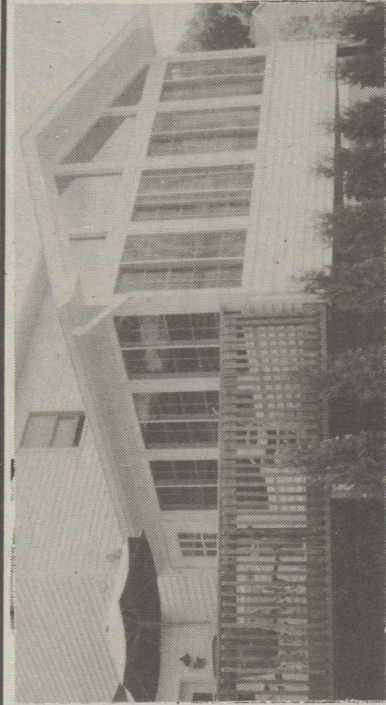
New IAS-certified carbon monoxide (CO) alarms will not sound if the level of CO detected is only at a "nuisance" level, which can be caused by a car starting up in an attached garage or by elevated outdoor levels of CO.

## GREAT ADDITIONS, INC.

### UNIQUE DESIGNS IN SUN-ROOM ADDITIONS

CLASSIC COMBINATIONS OF WOOD BEAMS & GLASS CREATE AN ELEGANT ATMOSPHERE

### SUN-ROOMS THAT COMPLIMENT YOUR HOME



EXPERTLY CRAFTED SUN-ROOMS . . . .  
A SOUND INVESTMENT

RELAX, DINE, OR ENTERTAIN IN YEAR ROUND COMFORT. WE FEATURE HIGH PERFORMANCE ANDERSEN® & MARVIN WINDOWS AND DOORS



WE ALSO SPECIALIZE IN: SCREEN AND GLASS ENCLOSURES FOR PATIOS AND PORCHES

FRIENDLY PERSONAL SERVICE — CALL TODAY  
GREAT ADDITIONS, INC.  
SHOWROOM & SHOP 283-5050  
HOME OFFICE 675-0852



# Fall can offer ideal conditions for planting

your garden. Some of the plant life recommended by Keil includes: herbaceous perennials, (green and leaf-like in appearance), woody perennials, and of course, trees and shrubs. "The Rhododendron native to the Appalachian Mountains is a very hardy plant," he adds. Keil suggests consumers talk with a knowledgeable nursery person.

"The best advice comes from a local nursery or garden center that belong to the PLNA," Al Trail Gardens, the staff goes to great lengths to remind and encourage people that fall is for planting. "We keep our nursery sales yard well stocked with plants of all types of perennials, trees and shrubs," says Keil. "We like to develop a colorful fall-festival atmosphere at the garden center by displaying a wide variety of pumpkins, gourds, Indian corn, shrubs, trees and perennials including the seemingly endless variety of colors, sizes and types of all garden mums."



PENNSYLVANIA LANDSCAPE & NURSERY ASSOCIATION

that belong to the PLNA."

Plant life, such as ordinary lawn grass and sod, are ideally planted in the early fall (September-October). "Grass plants produce seeds in autumn. Seeding in autumn gives a very good response," says Keil. "The newly planted seed does not have the hot, dry summer weather to contend with."

"Autumn is vastly underutilized. A great many landscape professionals will plant up until the ground is too frozen to be worked. They recognize the significant benefits of autumn planting," Keil says even after the first moderate frosts you can still add to

\* Fall is the best time to do lawn care. Most grasses in the northern half of the country are cool season varieties and grow best when the soil is warm and the air is cool. Grass started in the fall has two cool seasons to develop strong roots before coping with the heat of mid-summer and has less competition from emerging weeds.

\* Fall is the best time to fertilize lawns. Nutrients are easily absorbed by actively growing roots and are stored in the plants all winter, ready to support new growth in the spring.

Fall is also the best time to test your soil and to add lime, phosphorus and potassium, if necessary. The freezing and thawing action of the soil, the melting snow, and the spring rains work them down to the roots.

\* Fall is a great time to prepare vegetable gardens by adding lime or phosphorus and other organic material which can be worked into the soil with a rototiller or spade. Once added in the fall, you are ready to plant in the spring, even if the soil is wet. Just scratch a furrow, plant your seeds and cover.

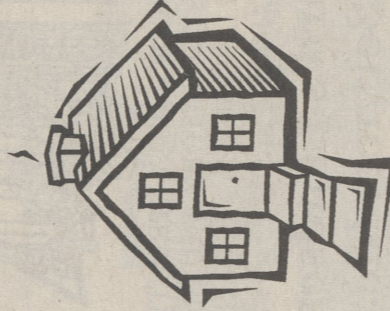
\* Fall conditions are ideal for planting landscape trees and shrubs. There is little competition between root and top growth. Expert advice from local garden centers and landscape professionals will help you make the best choices for your home.

\* Fall is the only time of the year to plant spring flowering bulbs. Bulbs can actually be planted much earlier than people know — they can be planted as early as mid-August and September.

\* Early fall is an excellent time to divide and plant herbaceous perennial flowers. Most plants stop flowering by the end of June, but they should not be moved at that time because their energy reserve in their roots is low.

\* Fall is a good time to add protective mulch to the soil surface after planting. It maintains uniform soil moisture and prevents weeds from getting established. Use shredded hardwood bark because it allows water to penetrate freely, while the fine shreds knit together to make it stable. Pine bark chips can blow away and whole leaves compact when wet.

**Clean up your gardens for the fall!**



## Home free.

**Our fees are on the house, so welcome to a quick, affordable Home Equity Loan.**

Why spend time waiting for a home equity loan?

We'll prequalify you in just 24 hours, give you a great rate, and get you the cash you need for a family vacation, a new car, bills, school or any worthwhile purpose. For an application, call or stop in today.



**LUZERNE NATIONAL BANK**

Quick, Affordable Home Equity Loans

WWW.LNBPA.COM

118 Main Street, Luzerne • 288-4511

801 Main Street, Swyersville • 287-1141

Member FDIC



## Rake in Big Savings On Aristokroff®

**Top Value Kitchens**  
16 E. Center Street • Shavertown, PA  
(717) 675-7083