



# The Dallas Post

50¢

SERVING THE COMMUNITIES OF THE DALLAS & LAKE-LEHMAN SCHOOL DISTRICTS

Vol. 108 No. 35

Dallas, Pennsylvania

August 27 thru September 2, 1997

## Year after 2 deaths, drug use still commonplace

By KYLIE SHAFFERKOETTER  
Post Staff

**BACK MOUNTAIN** - One year after the heroin-related deaths of two Back Mountain residents, authorities say drugs still are a significant problem for area youth. Some think drug use has leveled off, but is still a main reason for crime. Others believe drug use has increased over the last year and hard drugs are finding their

way into younger and younger hands.

"A lot of local younger people are using drugs. I don't understand, these are intelligent kids and some are getting addicted," said Jack Fowler, Dallas Borough police chief.

Marijuana is a common drug found in the area. In Lehman Twp., most drug arrests involve 17 to 25 year olds and marijuana. But, Stefanie Wolownik, pre-

*"I think some parents are not realizing what is going on."*

**James Balavage**  
Kingston Twp. police chief

vention supervisor for area school districts for the Wyoming Valley Drug and Alcohol Program, said the drugs of choice are changing and parents need to be very alert and aware about what their kids

are doing.

Although, alcohol and marijuana are still the top two, heroin and acid are not far behind for kids between the ages of 12 and 17. She attributes some of this to

a certain acceptability of it by parents. "Parents of kids now are the hippies of the 60's, who tend to be far more accepting. They are not saying it's okay, but they create a laid back atmosphere (when it comes to drugs)," said Wolownik, who encourages a "don't ask don't tell" policy concerning past drug use by parents.

But, she also encourages honesty. "If the child asks, tell them, but don't glorify it. Put the nega-

tive aspects on it," she said. A more common example is the parent who smokes cigarettes. The child might ask why they shouldn't smoke if the parent does. "The parent should say something like, 'Look, I'm addicted. I've tried to quit and I can't. This is terrible and I wish I didn't smoke,'" Wolownik said.

Wolownik also said silence

See DRUGS, pg 8

## New plan hikes local phone rates \$3.50 mo.

By RONALD BARTIZEK  
Post Staff

**DALLAS TWP.** - Citing a looming challenge to its "local toll" business, Commonwealth Telephone has filed a rate restructuring plan with the state Public Utilities Commission (PUC).

The new pricing scheme would mean higher monthly charges for many customers, with the benefit of an expanded local calling area, more features and potential toll-call savings after Jan. 1, 1998.

If approved by the PUC, the basic line charge would increase by \$3.50 per month (\$42 yearly), per phone line for residential and commercial customers. The basic plan would include call waiting, call forwarding and speed dialing, which are now extra cost services.

Call forwarding now costs \$3 per month, speed dialing costs \$1.50 monthly and the charge for call waiting is \$3.35 per month. Commonwealth customers can now buy any two of the services for \$4 monthly, or all three for \$5.50. The company will not release figures on how many customers use the added services, but Mike Burnside, director of corporate communications, said call waiting is by far the most popular and is used by about one-third of households.

The proposal is part of a long-range plan by telephone compa-

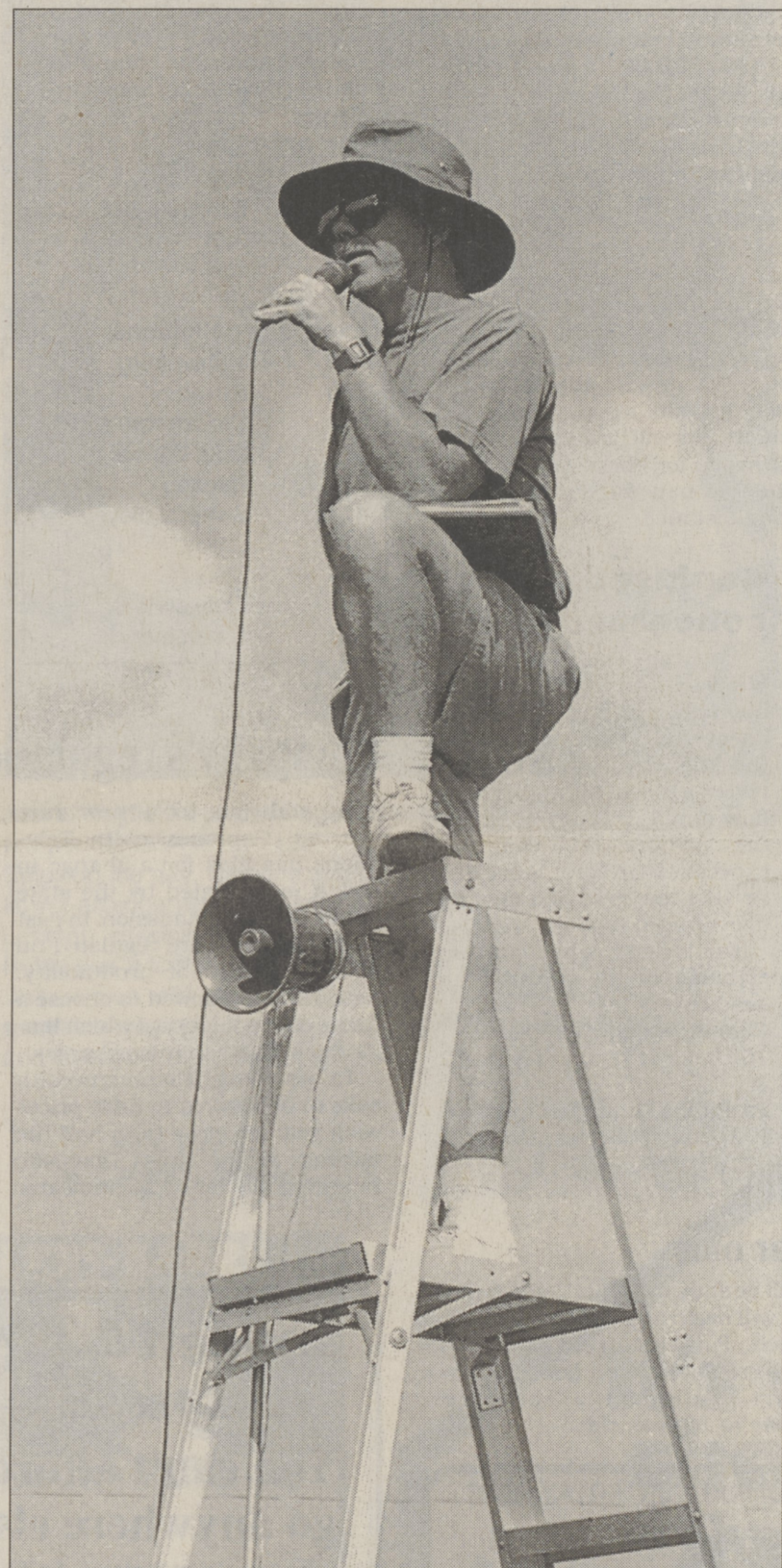
See PHONE RATES, pg 2



POST PHOTOS/CHARLOTTE BARTIZEK

## PRACTICE MAKES PERFECT

The Lake-Lehman Marching Band is putting the finishing touches on its 1997 show. The group held "band camp" at the high school last week, working out the music and formations for a show that features Celtic music, including the Riverdance Finale. In right photo, band director Edward Richards calls the shots from high on a ladder. Above, Eugene Milbrodt puts the finishing touches on a tune. Story, more photos on page 10.



## Water co. slow on repairs

By KYLIE SHAFFERKOETTER  
Post Staff

**LEHMAN** - Joseph Pagoda is starting to wonder what it takes to get acceptable service out of National Utilities, Inc. (NUI), the current water company serving the Oak Hill neighborhood.

Pagoda, who has spearheaded a legal battle to attain adequate service, is disappointed by what he feels is NUI's irresponsibility and inconsiderate business practices.

In March NUI promised the state Public Utilities Commission (PUC) it would replace the water main on Hemlock St. in Oak Hill by Aug. 15 at an estimated cost of \$20,000. The water main remains unrepaired.

Pagoda said NUI was supposed to start work on the main May 1. "They came here for one or two days (in May), dug up stuff and then didn't do anything for two months," he said.

The pipes they installed were faulty and had to be removed. Now, NUI has filed for a 60-day extension from PUC's Office of Special Affairs (OSA). Pagoda said this is typical of NUI, to wait until the last minute to start the work and not leave themselves any time. "So now the water main is behind schedule," said Pagoda. The water main system that will be replaced was installed 45 years ago.

The main on Hemlock St. was given priority status by the PUC.

See WATER CO., pg 8

## St. Paul's Lutheran Church welcomes new pastor

By KYLIE SHAFFERKOETTER  
Post Staff

**TRUCKSVILLE** - There's another new clergyman in town and his name is Charles Grube. On August 11 he took his new post as pastor of St. Paul's Lutheran Church in Trucksville.

"It's a neat community of people, they are so supportive," said Grube, who served at St. James in Rauchtown outside of Jersey Shore for nine years. "They have a strong leadership and are very active. They make it easy," he said of the transition.

Grube is friends with the new pastor of Gate of Heaven Church, Jack Lambert, who also moved from Jersey Shore.

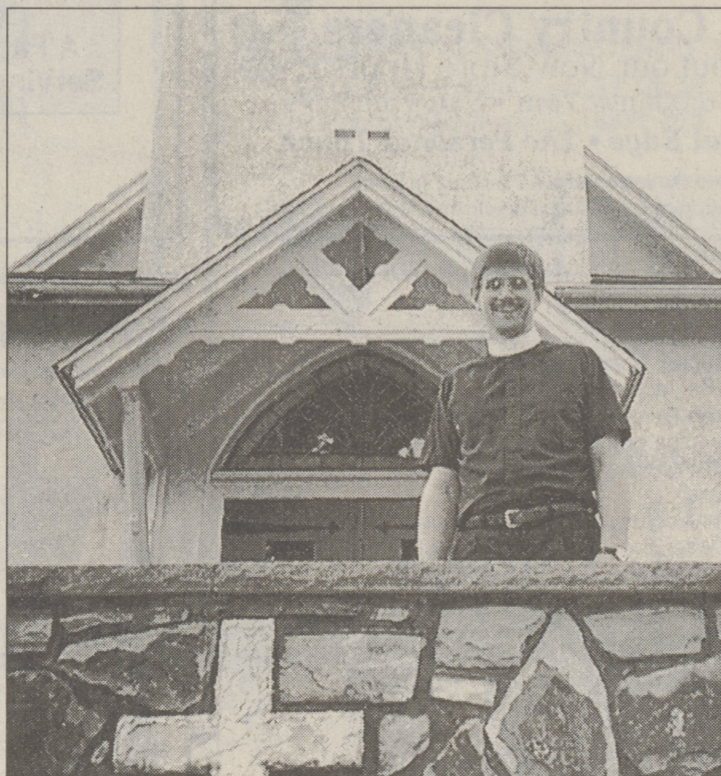
Although it's tough to leave a community of people, Grube looks forward to making relationships within his new congregation. "I will meet everyone here and soon will be in the thick of it," he said.

Grube comes to the church during an exciting time. The church is planning to build a

new building that can better accommodate its large membership's activities. St. Paul's current church was built in 1925.

"A lot is going on here. It's a happening place," said Grube with a laugh. A building design committee just started. The church is planning to purchase land near the intersection of Rt. 415 and Rt. 118. "We have tremendous resources here in the community," he said.

Grube follows in the footsteps of Harold R. Baer, who served the community for eight years before retiring in February 1996. Robert



POST PHOTO/KYLIE SHAFFERKOETTER

**Rev. Charles Grube** stood on the steps of St. Paul's Lutheran Church in Shavertown. Rev. Grube took the reins of the congregation this summer.

Bohm served as an interim pastor for one year and left in June. The church rotated

people to conduct sermons during the summer months.

When he isn't being a pastor, Grube spends most his time with his wife, Jean and their four children, Hannah, 8; Colin, 6; Hilary, 5 and Clara, 2. The oldest three will be attending Westmoreland Elementary this year.

Grube's hobbies include reading short stories and listening to music. "I like different styles of music, but my favorite is classical," he said.

This especially makes sense considering he taught music for three years before entering the Lutheran Seminary in Gettysburg. He was a music education major at Susquehanna

See ST. PAUL'S, pg 3

## Shawanese PO staying put

**SHAWANESE** - The Shawanese Post Office is staying right where it is. Despite the closing of the DiVeronica's store and a slightly cramped office, it will remain where it has been since 1945.

Nancy Smith, postmaster, said the postal service could not find a suitable location within a quarter-mile radius.

The post office has been located near Old Lake Rd. for 102 years.

### Music with a message

Punk rock group send a positive signal to peers. Pg 3.

### Links champs

Club champs crowned at Lehman Golf Club. Pg 9.

### INDEX

<b>14 Pages, 2 Sections</b>	
Calendar.....	14
Classified.....	12-13
Crossword.....	14
Editorials.....	4
Obituaries.....	12
School.....	11
Sports.....	9-10

CALL 675-5211  
FOR HOME DELIVERY,  
NEWS OR ADVERTISING

The Dallas Post

MAILING LABEL - Please enclose this label with any address changes, and mail to The Dallas Post, P.O. Box 366, Dallas PA 18612-0366