

Westmoreland Elementary opening day schedule

Classes will begin at Westmoreland Elementary School on Wed., Aug. 27. The professional staff has been working through the summer to plan for a smooth opening and a school year of learning and fun.

Students in the first through fifth grades will attend full day sessions from 9:15 a.m. to 3:45 p.m., beginning August 27. The school building will open at 9:00 a.m. Student supervision will begin at that time.

On the first day, students in grades two through five will report directly to the cafeteria located on the second floor to meet their teachers. First grade students will gather in the first floor hallway where teachers and volunteers will assist them in finding their classrooms.

Bus routes and schedules will be published in the newspapers. Parents need to consult the paper for bus assignments and departure points.

It is recommended that students ride the bus on the first days of school so that children will learn their bus assignment and the district will have accurate transportation records. If parents

Dallas Middle School opening day

Preparations for the opening of the Dallas Middle School have been underway. Mr. Anthony B. Martinehl, Principal, and his staff have been busy all summer readying the building and program for the opening of classes on Wednesday, August 27, 1997.

The school's master schedule has been constructed to provide each student with a well-rounded program of subjects supplemented with numerous co-curricular and extra-curricular activities. Sixth-, seventh-, and eighth-grade students will report to the middle school building between 7:45 and 8:00 a.m. Sixth-grade students, upon arrival at school, will report directly to the auditorium. Seventh-grade students, upon arrival at school, will report directly to the gymnasium. Eighth-grade students will report directly to the cafeteria.

At this time, a short orientation program including assignment to homerooms will be made. Students will then be instructed to report to their homerooms in preparation for their first day of school.

To ensure greater security of student lockers, combination padlocks will be available to rent for a \$2.00 refundable fee. Students are asked to bring \$2.00 to school the first day. Lockers will be available from the homeroom teachers. Personal lockers are not permitted. Students will be able to purchase a nutritious lunch beginning with the first day of school. The price of a Class A lunch is \$1.40.

1st Adventure Preschool

183A N. Main St.
Shavertown, PA 18708
675-3180 Director: Maureen Devine

Boys and Girls 3, 4, 5 years old

2 or 3 Day a Week Program • A. M. Session
9:00 - 11:30 a.m. • Limited Registration

Available for 1997 School Year

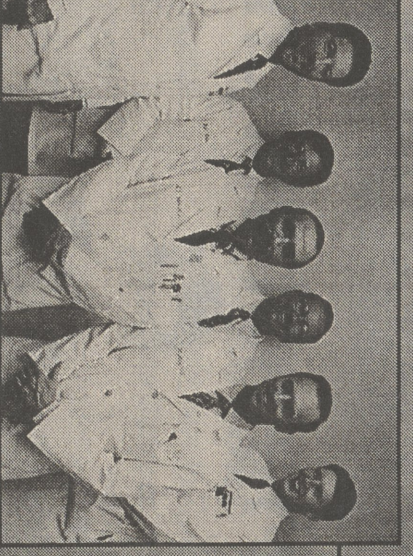
Open House
Friday, August 15th
4:00 - 6:00 p.m.
or call anytime for a tour

Last chance for a fun week of camp
Aug. 8th - 11th, 9:00-12:00
Theme: Arts n' Crafts
Children ages 3-8yrs. old

Wometown Eye Specialists And Staff taking care of you.

Vision Of Excellence

For Over 35 Years



Staff

Front row, left to right:
Ellen Jones, O.A. — Sweet Valley
Carol Murdock, R.N. — Shavertown
Back row, left to right:
Joanne Carpenter, C.O.I. — Dallas
Joseph Pugliese C.O.I. — Dallas
Mary Ann Knorr, A.B.O. — Jackson Twp.
Donna Kovalick, L.P.N. — Franklin Twp.
Missing from photo:
Nancy Daniels, L.P.N. — Shavertown
Angie Marra — Shavertown
Stephanie Stevenson — Harveys Lake

Physicians

Front row, left to right:
G. Geoffrey Miller, M.D. — Trucksville
Kurt J. Moody, O.D., F.A.A.O. — Dallas
Back row, left to right:
Frank A. Bucci, Jr. M.D. — Shavertown
Jay B. Tanner, O.D., F.A.A.O. — Dallas
Agapio Lopez, M.D. — Dallas
Jeff S. Empfield, O.D. — Dallas

Eye Exams

Surgery

Optical Center

Surgical Center

THE PUGLIESE EYE SPECIALISTS
601 Wyoming Avenue, Kingston • 288-7405 • 800-322-4733
Ambulatory Surgical Center

Guidelines for free and reduced price lunches

The 1997-98 Income Guidelines for the National School Lunch Program have been released regarding the Free and Reduced Price Meal Program for those children unable to pay the full price of meals or milk. The sponsor has adopted the following family size and income criteria as established by the Secretary of Agriculture for determining eligibility. Children from families whose income is at or less than the levels below are eligible for free meals or milk or reduced price meals.

To apply for free or reduced price meals or free milk, complete the application sent home by your school with a letter to parents, sign it and return it to the school. Additional copies are available from the school.

Food Stamp/TANF Households: If you currently receive Food Stamps or Temporary Assistance for Needy Families (TANF) (formerly AFDC) Cash Assistance for your child, you have to list only your child's name and food stamp or TANF case number, print your name, and sign the application. Since you have already given income information to the County Assistance Office, the school can confirm your eligibility.

All other households: If your household income is at or below the level shown above, your child is eligible for free or reduced price meals or free milk. To apply for meal or milk benefits, you must provide the following information or your application cannot be approved:

Household names: Write the names of every one in your household. Include yourself and all children, your spouse, grandparents, other relatives and unrelated people in your household.

Current income: Write the amount of monthly income each person now receives on the same line as their name, and where it comes from, such as earnings, welfare, pensions or other income. It is all money before taxes or anything else is deducted.

If the amount received most recently is higher or lower than usual, write that person's usual income.

Social Security number: Write the name and social security number of the parent/guardian adult household member who signs the form. Write the word "none" if the adult household member signing the form does not have a social security number.

Signature: An adult household member must sign the application. Foster children may also be eligible for these benefits. If families with foster children wish to apply for free or reduced price meals or milk, they should write the child's personal use income, how often it is received, and sign the application.

If you list income information and your child is approved for meal or milk benefits, you must tell the school when your household income increases by \$50 or more per month (\$600 per year) or when your household size decreases. If you list a food stamp case number or TANF number, you must tell the school when you are no longer receiving food stamps or TANF for your child.

The parent must also certify that all of the information is true and correct to the best of his/her knowledge and belief. The information provided on the application will be used to determine eligibility for free or reduced price meals and may be verified at any time during the school year by the school or other program officials. The eligibility status of each child may be given to Title I officials for allocation and evaluation purposes. No other use of the application information is permitted without parental permission. The application is made in connection with the receipt of federal funds. Deliberate misrepresentation of information may subject the applicant to prosecution under applicable state and federal criminal statutes.

You may apply for benefits at any time during the school year. If you are not eligible now but have an increase in household income, become unemployed, or receive food stamps or TANF for your child, complete an application at that time.

Children who receive a free or reduced price meal or free milk benefits are treated the same as children who pay for their meals or milk. In the operation of child nutrition programs, no child will be discriminated against because of race, sex, color, national origin, or disability. If you believe you have been discriminated against, write immediately to the Secretary of Agriculture, Washington, D.C. 20250.

Under the provisions of the school's policy, which is on file in the school's office and may be reviewed by any interested party, Call your school district for the name, address and telephone number of our hearing official.

approving official. If a parent is dissatisfied with the ruling of the local approving official or the results of verification, he/she may request a hearing to appeal the decision. Hearing procedures are outlined in the school's policy which is on file in the school's office and may be reviewed by any interested party. Call your school district for the name, address and telephone number of our hearing official.

Eligible for free meals or milk	Annual	Monthly	Weekly
1	\$10,257	\$855	\$198
2	\$13,793	\$1,150	\$266
3	\$17,329	\$1,445	\$334
4	\$20,865	\$1,740	\$402
5	\$24,401	\$2,035	\$470
6	\$27,937	\$2,330	\$538
7	\$31,473	\$2,625	\$606
8	\$35,009	\$2,920	\$674
For each additional family member	\$3,536	\$295	\$68

Eligible for reduced price meals	Annual	Monthly	Weekly
1	\$14,597	\$1,217	\$281
2	\$18,629	\$1,536	\$378
3	\$22,661	\$1,855	\$475
4	\$26,693	\$2,174	\$572
5	\$30,725	\$2,493	\$669
6	\$34,757	\$2,812	\$766
7	\$38,789	\$3,131	\$863
8	\$42,821	\$3,450	\$960
For each additional family member	\$4,032	\$340	\$97

THE HEALTH CARE YOU DESERVE - WHENEVER YOU NEED IT.

At Dallas Family Practice, you're virtually assured of highest quality medical care any time you need it. Our services are available every day of the week. During the week, we maintain office hours through 8 p.m. And additional office hours are available Saturdays, Sundays and holidays.

How do we do it? Simple. We're the largest primary physician group practice in all of Wyoming Valley Health Care System. Six skilled and experienced family physicians, a physician assistant and a caring, professional staff provide the ongoing personal attention you deserve - whenever you need it. For patients of any age, Dallas Family Practice offers comprehensive health care as well as a broad range of diagnostic testing - all conveniently located on-site at the Back Mountain Medical Center. When you need the services of an experienced, knowledgeable doctor, come to Dallas Family Practice for the quality healthcare you and your family deserve - whenever you need it.

DALLAS FAMILY PRACTICE

Back Mountain Medical Center
100 Upper Demunds Road
Dallas, PA 18612 675-2111
An affiliate of WYOMING VALLEY HEALTH CARE SYSTEM



Seated: Diane A. Lowe, M.D.; Irvin Jacobs, M.D.; Gary D. Northstein, D.O.
Standing, left to right: Gunnar F. Kosek, D.O.; Louise C. Hughes, PA-C;
Kurt D. Maas, M.D.; Jane E. Durkin, D.O.
Board-certified • Board-eligible