

Library news



Nancy Kozemchak

The Back Mountain Memorial Library is featuring a display advertising College Misericordia's Theatre-on-the-Green 10th anniversary year. The 10th anniversary production will be Shakespeare's most passionate, romantic tragedy, Othello. The audience will be moved by the tragic losses. Othello depicts the struggle between good and evil; he is the outsider who is a respected warrior and statesman. Iago is pure villain, motivated by jealousy and anger to plot Othello's downfall. The audience will be moved by the tragic losses they

Still room in story hour

represent. For a perfect summer evening, enjoy professional theatre in the open air, surrounded by cool breezes, flickering candles and the beautiful campus. Performances are held rain or shine; an extra stage setting enables the move quickly to Walsh Auditorium. Chair/bleacher and table seating will be reserved through advance ticket sales. Lawn seating is limited, available on first come, first served basis only, each night of the performance. Box Office opens at 7:15; all performances begin at 8 p.m. The dates of the production are July 11, 12, and 13. Further information may be obtained by calling 674-6719 for reservations and tickets.

The Kick Off party for the 51st annual library auction was held at Yester-Days on Monday, June 9. A very lively and enjoyable time was had by all. The enthusiasm was wonderful and, coincidence,

there were 51 people at the party. The auction committee is in need of refrigerators for the refreshment stand. They should be in good working condition. We will arrange to pick these up. Ask for more information at the library or call 675-1182.

The summer story hour sessions are filling up; however there is room for a few 3-5 year olds in the 1-2 p.m. time on Wednesday. There is also some time available for Saturday story times. Call the library for details.

Volunteers to work in any phase of the library auction are welcome to sign up at the library and specify their choice of the area they prefer.

The library has chances for sale: The antique committee has three items; chances are \$1.00 each. The new goods committee has five items and the chances are \$1.00 each or six chances for \$5.00. Inquire at the front desk.

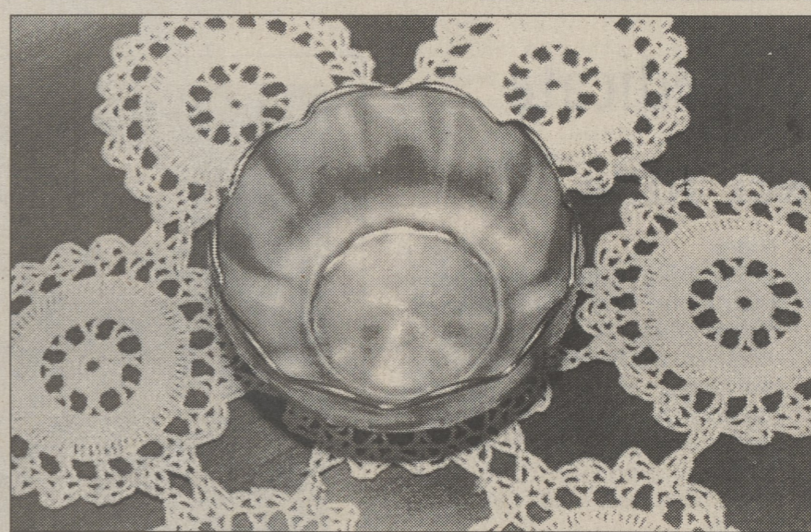
Students receive book awards

Each year Dallas Rotary Club awards "book scholarships" to four students, two from Lake-Lehman School District and two from Dallas School District. The students are selected by school guidance counselors, not only for scholastic ability, but also for other areas of excellence. Each student was presented with a check for \$500 to help defray some of the cost for books while attending the first year in college. Shown in the picture, from left, Ron Fitch, President of Dallas Rotary Club; Roy Halcomb, Lake-Lehman H.S. who plans to attend East Connecticut University to begin studies towards a degree in Sports Management; Lisa Joyce, Lake-Lehman H.S. who plans to attend Lafayette to begin studies towards a degree in chemistry; Kimberly Karavitch, Dallas H.S. who plans to attend University of Pittsburgh to begin studies towards a degree in Bio. Engineering; Jessica



Conte, Dallas H.S. who plans to attend Philadelphia College of Pharmacy and Science to begin studies towards a degree in Pharmacy; William Griffiths, Superintendent of Dallas School District.

Library Auction Corner



One of the many antique items that will be sold over the block at the 51st Annual Library Auction.

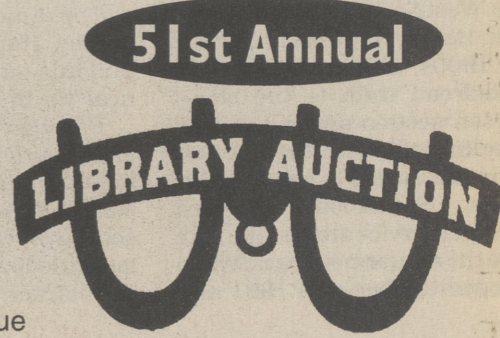
There's still time to donate items for the 51st annual Back Mountain Memorial Library Auction.

The life of the library is a year-to-year proposition, and the auction is crucial to its operation. Twenty-five percent of the annual budget comes from the auction.

Any and all donations of cash or saleable items can help assure the continued fine service of the library to our communities. For more information, call the library at 675-1182.

A sampler of new items:

- Lawn Edger, Dallas Centre Hardware, \$116 value
- Silk Flower Arrangement, Bolin Floristry, \$40 value
- Pilgrim Tool Set, Back to Basics, \$100+ value
- (4) Gift Certificates, Parker Fuel, \$50 value each
- Tickets to Othello, Theatre-on-the-Green, College Misericordia
- Bagel Basket each day, Basically Bagels, \$100 value



July 10-11-12-13

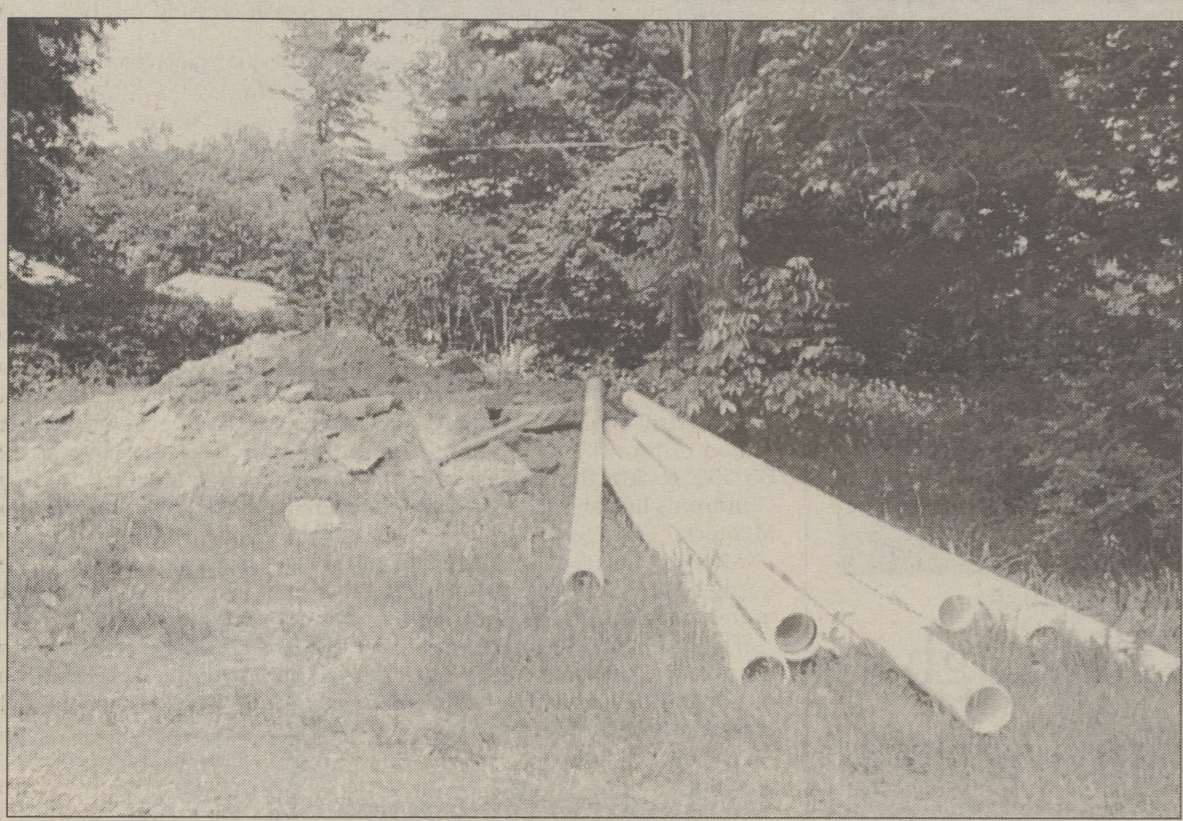
Support the Back Mountain Library

One-fourth of the library's annual budget comes from the auction. You can help. Your donation of an item or money will help your library survive and prosper.

Here's my donation to the Back Mountain Memorial Library

Name \_\_\_\_\_ Phone \_\_\_\_\_  
 Address \_\_\_\_\_ City/State \_\_\_\_\_ Zip \_\_\_\_\_  
 I have an item to donate. Call me for details. Value \$ \_\_\_\_\_  
 Here's a cash donation of \$ \_\_\_\_\_ to help the library.  
 Mail or bring to: Back Mountain Memorial Library  
 96 Huntsville Road, Dallas PA 18612  
 Call 675-1182 if you have any questions. Donations are tax-deductible.

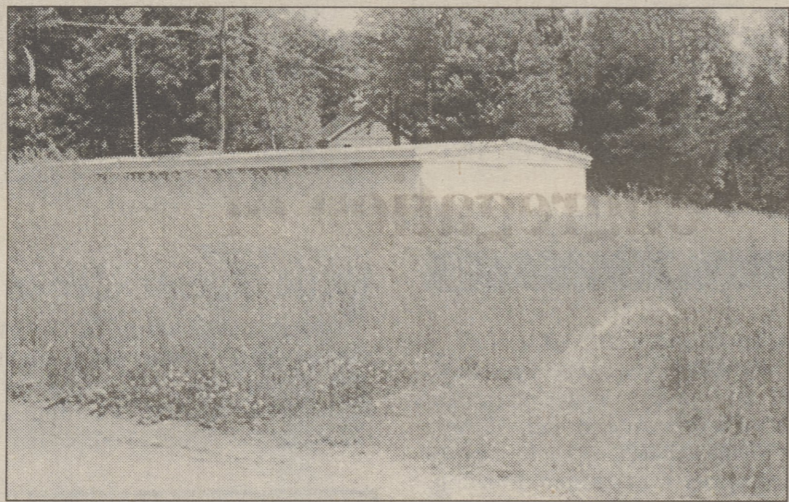
This message donated as a public service by The Dallas Post



EYESORES

National Utilities, the water company with operations in the Back Mountain, continues its habit of poor maintenance. In top photo, plastic piping and a pile of dirt and rocks lie along Park St. in Oak Hill. At right, four-foot-high grass surrounds a pump station in Midway Manor in Shavertown, but a path to the doorway is mowed.

POST PHOTOS/RON BARTIZEK



AWANA Club Awards at Grace Community

The AWANA Club Awards Night was held at the Grace Community Church of Dallas recently. This club is a Bible-based fellowship that meets weekly throughout the months of September-April. Boys and girls are encouraged to memorize Bible scripture, work on crafts and enjoy recreation time. Steven Losh received the Timothy Award for completing four years of the AWANA Club requirements. Steven has been a member of the club since three years of age. During his nine years in the club he has received the SPARKS Award and Excellence Award. Pictured from



left, Gloria Bronson, Andy Race, Bill Burnaford, Dave Leapline, Michael Losh, Diane Losh, Pastor Dan Fabricatore and Steven Losh holding his Timothy Award. Grace

Community Church is located on the Harveys Lake Highway across from the Chapel Lawn Cemetery. For more information, call the church at 675-3723.

TAP BACK MOUNTAIN JAZZ DANCE STUDIO

Area's Most Advanced Dance School



BEAT THE HEAT WITH YOUR FEET!  
 AGES 3 & UP



SUMMER Classes Begin Week of June 23 675-7227



To Use Professional Assistance When Investing Money

- On-Going Advice
- Resources
- Expertise
- Service
- Diversification
- Availability



Ask your investment professional about The Hartford's Director® variable annuity. A retirement product that gives you:

- Quality - The Hartford Life Insurance Companies are highly rated by industry analysts.
- A+ (Superior) from A.M. Best for financial strength
- AA+ from Duff & Phelps for claims-paying ability
- AA from Standard & Poor's for claims-paying ability
- professional money management
- tax-deferred growth
- access to your money!

If you want to take advantage of the benefits you receive from making your investments through an

Investment Professional, Call

GAGER AND ASSOCIATES An Affiliate of First Allied Securities, Inc.

Market Courtyard 840 West Market Street • P.O. Box 1112 A Kingston, PA 18704 717-288-7878 • FAX 288-7771

The Director is a flexible premium variable annuity. The Director is issued by ITT Hartford Life and Annuity Insurance Company, Minneapolis, MN (countrywide (except for NY): ILAVA94, FL: ILAVA94FL and NC: ILAVA94NC) and by Hartford Life Insurance Company, Simsbury, CT (countrywide: HLVA94, FL: HLVA94FL, NY: HLVA94NY and NC: HLVA94NC). The Director prospectus and contract will indicate the appropriate issuing company. The Director is underwritten by Hartford Equity Sales Company, Inc., and where approved, Hartford Securities Distribution Company, Inc. Be sure to refer to a current Director prospectus for more information. \*The Director is a long-term investment vehicle, therefore withdrawals are taxable and if made prior to age 59½ may be subject to a 10% federal penalty. A contingent deferred sales charge may be assessed upon early withdrawal. The Director has annually decreasing surrender charges of 6, 6, 5, 5, 4, 3, 2%.

H2125AD 1/97