

CALENDAR

Calendar items are published free of charge. Generally, items will appear the two weeks prior to an event. To submit material, send or bring it to The Dallas Post, 45 Main Road, Dallas PA 18612. Deadline is Friday at 3 p.m.

COMMUNITY

NOV. 27, THANKSGIVING EVE SERVICE, 7:30 p.m. St. Paul's Lutheran Church, Shavertown. The service is sponsored by several churches of the Back Mountain Clergy Assoc. Pastor Robert Bohm will be speaker for the evening. People attending are requested to bring non-perishable food for the Back Mountain Food Bank. A reception will follow after the service. Everyone is invited. For more information, 675-3859.

DEC. 3, BLOOD DRIVE, at Fellowship Evangelical Free Church, Hildebrandt Road, Dallas. 10 a.m.-4 p.m. Appointments are recommended.

DEC. 15, ST. NICHOLAS BYZANTINE CHURCH ANNUAL CHRISTMAS PARTY, at Knights of Columbus Home, Main St., Luzerne at 1:30 p.m. \$12. Includes lunch, door prizes. Tickets can be obtained from any Society member.

FRIDAYS-BACK MOUNTAIN FREE MEDICAL CLINIC at St. Therese's Church, lower level, corner of Pioneer and Davis St., Shavertown, welcomes all who are in need of medical care by competent doctors, nurses and staff. If uninsured or underinsured, we care to help. 6:30 p.m. Confidentiality assured.

BINGO every Wednesday night at the Jonathan R. Davis Fire Hall, Idetown. Early birds 5:30 p.m.; regular series 6:30 p.m. Call 639-5755 for more information.

BINGO every Thursday night at the Kunkle Fire Hall, Rte. 309, Kunkle, Jackpot. Early birds 5:45 p.m., regular games 7:15 p.m.

BINGO every Sunday night at the Shavertown Fire Hall, Main St., Shavertown. 6 p.m. Free admission, pay as you go. Hard card game with paper card specials.

CLUBS/GROUPS

IDETOWN UM CHURCH COUPLE'S CLUB meets the third Saturday of each month January through June, and September through December. New members are always welcome.

HARVEYS LAKE CRIME WATCH ASS'N. meets the last Wednesday of every month at the borough hall, 7 p.m. For more information call the borough office at 639-2113.

CLUBS/GROUPS

S.P.A.W.N. (Society of Poets and Writers of the Northeast) meeting. Second Sunday of each month. Call Steve at 639-2320 for more information.

ALCOHOLICS ANONYMOUS meetings in the Back Mountain:
Monday - 7:15 p.m. (OD) and 8:30 p.m. (OS), Prince of Peace Church, Main Street, Dallas.
Tuesday - 7:30 p.m. (OD) at the Lehman Fire Hall, Lehman.
Wednesday - 7:30 p.m. (OD) at Loyalville Methodist Church.

Friday - 8 p.m., (CD) at St. Therese's Church Rectory, Pioneer and Davis St., Shavertown.
OD: Open discussion; OS: Open speakers.

THURSDAYS, BACK MT. TOUGHLOVE, Shavertown U.M. Church, 163 N. Pioneer Ave., Shavertown. Toughlove is a self-help program for parents troubled by teenage behavior. For more info, 675-3616 or 675-0372.

'50 SINGLES CLUB, meets 1st & 3rd Tuesday of the month at 7:30 p.m. at the Black Diamond Post 395 American Legion, 386 Wyoming Ave., Kingston. For information, 696-4209, 283-5614.

SUPPORT GROUP MEETINGS for ACOA (Adult Children of Alcoholics) and other dysfunctional families are held, every Sunday, 8 p.m. Blue doors of Mercy Center at College Misericordia, Dallas. For more information call the Help Line at 829-1341.

CHURCH

FELLOWSHIP EVANGELICAL FREE CHURCH, Ladies' Bible study Weds., 6:30-8 p.m. Thurs., 9-11:30 a.m. at Fellowship Evangelical Free Church, 45 Hildebrandt Road, Dallas, (next to Dallas High School). For more information call 675-6426.

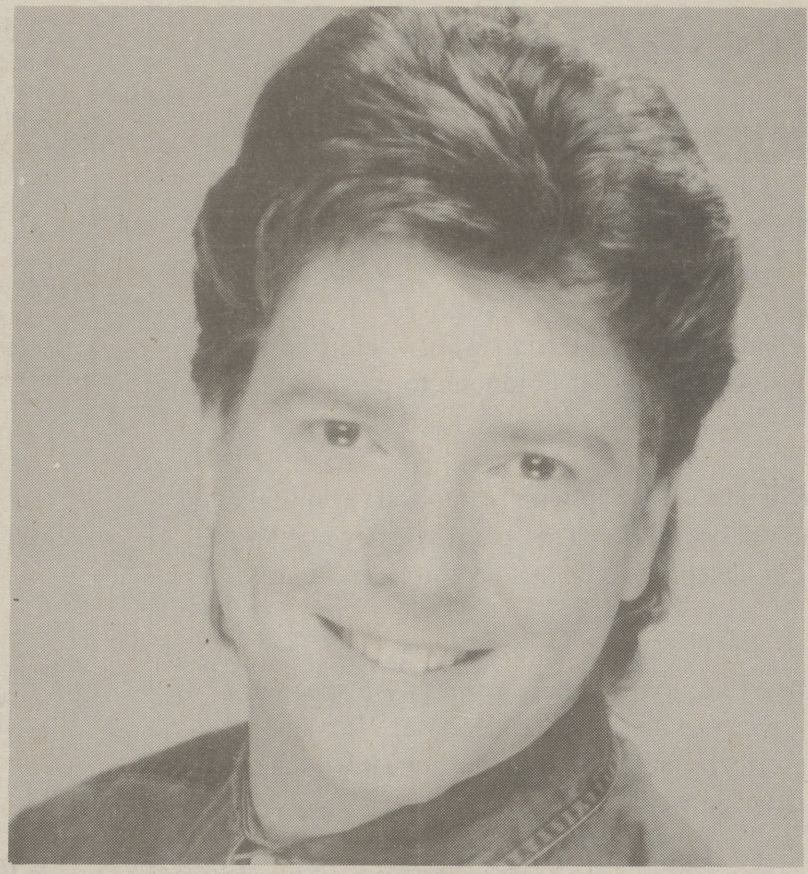
BAHA'I FAITH: The Baha'i Community of NE PA holds study classes every other Saturday at 7:30 p.m. in Falls Twp. A social hour follows. The Baha'i Faith works to bring about racial harmony, equality of the sexes, understanding among nations and world peace. For more information call 378-3782 or 824-4460.

Christmas show will aid McAuley Ctr.

The magic and meaning of Christmas comes alive with *Andy Cooney's Christmas '96 Show* to be performed on Dec. 5, at Bishop Hoban High School in Wilkes-Barre. The show, to benefit the Catherine McAuley Center, a sponsored work of the Sisters of Mercy, will showcase some of the top performers in the Irish entertainment world.

Andy Cooney, with his outstanding voice and dynamic stage presence, has always been a favorite among American and Irish audiences everywhere. His talent and versatility provide the ability to deliver a song directly to the hearts of his audience. Andy is surely one of the greatest singing sensations on the stage today. Being christened "Irish America's Native Son" by the *New York Times*, is a title he truly deserves. Andy Cooney and his guests will entertain their audiences with a celebration of the Christmas spirit full of warmth and happiness that make memories last forever.

Join with Andy Cooney and his guests for what promises to be an outstanding show, and at the same time, support a worthy cause. Ticket price is \$20. For tickets and more information on the show, please call Sister Romaine at (717) 779-2801 days, or (717) 826-0020 evenings. Those interested in Scranton can call (717) 342-1342. All interested are urged to call early as the show promises to be a sellout.



ANDY COONEY

779-2801 days, or (717) 826-0020 evenings. Those interested in Scranton can call (717) 342-

SPECIAL EVENTS

NOV. 29, HUDSON MODEL RAILROAD CLUB WINTER OPEN HOUSE, Christmas preview. 6-9 p.m. **NOV. 30-DEC. 1, 7, 14, 21, 28**, 1-6 p.m. Martin and Gibbons St., Hudson, Plains Twp. 1,800 sq. ft. layout. Free admission. Donations accepted.

NOV. 30, WYOMING VALLEY TRAIN & TOY SHOW, holiday spectacular. Woodlands Inn & Resort, Route 315, 9 a.m.-4 p.m. \$3. 829-4073.

NOV. 30 - DEC. 1, AMERICAN RED CROSS HOLIDAY CRAFT FAIR, with special appearances by Santa Claus. 109th Field Artillery Armory, Market St., Wilkes-Barre. Sat., 9 a.m.-4 p.m.; Sun. 10 a.m.-4 p.m. \$2 adults; free for children under 12. 823-7161.

DEC. 1, AN INTRODUCTION TO ZEN, workshop, Rivers Room, Mercy Center, Dallas, 12:30 p.m.-5:30 p.m. \$15 adults, \$7 students. 823-9977.

DEC. 6-7, MADRIGAL DINNER, an Elizabethan-style holiday feast and entertainment. College Misericordia, 7 p.m., \$30. For reservations, 674-6719.

DEC. 7, CONTRA DANCE, with caller Liz Bradley and band, T and Sice, First Presbyterian Church, Wilkes-Barre, 7:30 to 10:30 p.m. Adults \$6; membes, \$5; families \$10. 333-4007.

THROUGH DEC., FRIEDMAN OBSERVATORY, Penn State Wilkes-Barre open Friday and Sunday nights starting at 8 p.m. weather permitting. See the moon, planets and star clusters through one of the largest telescopes in the area. Reservations are requested for groups with over 10 people. For more information, call 675-2171 or 675-9278.

HEALTH

DEC. 2, 9, EARLY PREGNANCY SERIES, 6:30-9 p.m. in the Nesbitt Medical Arts Building auditorium, 534 Wyoming Ave., Kingston. Reservations required. For more information or to make a reservation, call 552-8632 or 1-800-838-WELL.

EXHIBITS

THROUGH DEC. 14, CHARLOTTE M. DICKINSON EXHIBITION, florals, landscapes, still life and figure work, MacDonald Art Gallery, College Misericordia, Tues.-Thurs., 12-5 p.m. and 6-8 p.m.; Fri., 12-5 p.m.; Sat., Sun., 1-5 p.m. 674-6250.

THROUGH DEC. 20, MASTER PRINTS FROM GRAPHICSTUDIO, prints by leading contemporary artists. Sordoni Art Gallery, Wilkes-Barre, Noon-5 p.m. Daily 831-4325.

EXHIBITS

SAT.'S THROUGH DEC. 21, SWETLAND HOMESTEAD, 10 a.m.-4 p.m. Admission \$3 adults; children, age 12 and under \$1. Public invited. Group tours by appointment only. Call Society's office at 823-6244 to schedule. Swetland Homestead is located at 885 Wyoming Ave., Wyoming.

THROUGH DEC., EGYPTIAN FUNERARY ART, Everhart Museum, Nay Aug Park, Scranton. Tues.-Sun. noon-5 p.m. 346-7186.

ANTHRACITE YEARS, Wyoming Valley Historical and Geological Museum, 69 S. Franklin St., Wilkes-Barre. Tues.-Fri., noon-4 p.m.; Sat., 10 a.m.-4 p.m. 823-6247.

AT THE KIRBY

DEC. 3-4, THE WHO'S TOMMY, rock opera, 8 p.m., \$35.50, \$32.50, \$25.50. Presented by Albert Noccilino.

STAGE

NOV. 29-30, DEC. 1, 5-8, 12-15, A CHRISMAS CAROL, Music Box Playhouse, 196 Hughes St., Swoyersville. Thurs.-Sat., 8 p.m. Sun., 3:15 p.m. 283-2195.

The Post is online!

Now you can send letters and other material by e-mail, to dalpost@aol.com But please call first. We want to avoid receiving unusable material. So, call us the old-fashioned way at 675-5211 and tell us what you want to send by e-mail. Thanks.

CROSSWORD CORNER

- ACROSS**
1 Look like
5 Necklace parts
10 Gunfighter's order
14 Trattoria treat
19 Wheel part
20 Dramatist Edward
21 Roof edge
22 Above the crowd
23 "The Life of Riley" actor?
25 Den denizen
26 Off-limits
27 Bismirch
28 Kind of kiln
29 Hog heaven?
31 Robert of "Quincy, M.E."
32 Tuck's mate
34 F. Scott Fitzgerald novel?
40 Unstable
45 See 48
46 College collar
47 Gershwin or Levin
48 With 45
50 Lid
52 Ahab's mark
55 Neil Sedaka
- hit?**
58 Drummer
59 Van Halen
59 Casino
61 "Gay"
62 "Unforgettable" name
64 Wedding staple
66 Drillers' org.
67 Face shape
70 Beastly places?
73 Milan's locale
76 Poe short story?
79 Something to remember
81 Scheme
82 Move quickly
83 Annoy
84 Hasly
86 Easy dessert?
88 Endangered ape
92 Ark park?
95 Puppeteer
98 "Before the Next Teardrop Falls" singer?
101 Organic compound
102 Composer
103 Amneris' rival
104 Coach
105 Parseghian
105 Comic Laurel
- 107** Ballad or barcarole
109 Fall fabric
112 Hopkins/Pitt film?
117 Relatives
118 Architect's add-on
119 Actress Carrere
120 Scout munchies?
123 Hole in your head?
127 Brooch material
130 Wisecrack
133 "Midnight Cowboy" actress?
135 Egyptian statesman
136 Bring to ruin
137 Come to terms
138 Pianist Gilels
139 Chased up a chestnut
140 "L... c'est moi!"
141 Relies (on) Falls' singer?
142 Circuit safeguard
DOWN
1 Shortens a slit
2 Leave
3 Grasso or Raines
4 Mercurio of

- "Never on Sunday"
5 Herd word
6 Admiral
7 Zumwalt
8 Eban of Israel
9 Pope or Voltaire
9 Musical group
10 Society miss
11 "Norma —"
12 "Stop, sailor!"
13 Massenet opera
14 Singer Benatar
15 Chicken — king
16 Edna Ferber novel
17 It may be sweet
18 In progress
24 "What's — for me?"
30 Even so
33 BB-gun sound
35 Costa —
36 Sacred cow
37 Cleave
38 It really smells
39 Peruvian Indian
40 Depravity
41 Algerian seaport
42 "Le Roi d'Ys" composer
43 Maui memento
44 Make a buck
49 Square
51 Bani'sh
53 Eye opener?
54 Funnyman
55 "Hil" to Ho
56 "Bolero" composer
59 Object
60 Liotta of "Unlawful Entry"
63 Basil or Braxton
65 Egyptian Christian
68 Separately
69 Green bean
71 Peculiar
72 Put one's foot down
74 Bank deposit?
75 Champion rider?
76 Eisenhower or Perot
77 "Vissi d'arte" singer
78 Israeli port
79 Dam org.
80 Present
85 Neighsayer?
87 Rohmer or Roberts
89 Way over yonder
90 Franco of "Carmelot"
91 Black and white
93 Supreme leader?
94 Palo —, Calif.
96 Mouth part
97 Mof of the Met
99 Tokyo, once
100 Gloomy
102 Dear old thing?
106 Sternward
108 Worldwide
110 Compact —
111 Child welfare org.
112 Smallest
113 "Enigma Variations" composer
114 Picnic area
115 Frequent
116 Sweater size
121 Mitchell homestead
122 A real Swede guy?
124 Famed orca
125 "Exodus" author
126 "O — Mio"
128 Menlo Park monogram
129 JFK abbr.
131 Mrs. Eddie Cantor
132 Greenhouse item
134 Loser to DDE
11 Grow
16 Grit your teeth
20 Whatever amount
23 Director Kazan
24 Nauseated
25 Resorts international?
26 No longer paunchy
27 On the risque side
28 —friendly
29 Pack quantity?
32 "Platoon" locale
33 Friars Club event
35 Mr. Ziegfeld
36 Washington group
38 Rendezvous on the sly
39 As much as is allowed
42 Beehive State
43 Son of Jacob
44 Gin
45 Excepting
46 Eggs
47 Party bowlful
49 Sapporo sash

1	2	3	4	5	6	7	8	9	10	11
12							13			
15									17	
18								19	20	
										23
										24
										25
26	27	28					29			30
31										33
34										
										36
37										39
45	46	47					48	49		
50										52
53										55

- ACROSS**
1 School function
4 Blueprint
8 Attract
12 Botheration
13 Exceptional
14 Hindu music style
15 "Never mind"
17 Pinnacle
18 Deep furrow
19 Spotted
21 Unaus' kin
22 Except if
26 Bridge support
29 "Guys and Dolls" role
30 Edge
31 Impetuous
32 Compete
33 Costa —
34 Bar need
35 Mend
36 Steeps
37 Dark bluish green
39 Cow-feed-teria?
40 "Poppycock!"
41 Don Rickles' specialty
45 Murder mystery
48 "Never mind"
50 Erstwhile ovum
51 Slightly
52 Actress Gardner
53 Engrossed
54 Microscopic arachnid
55 "With it"
DOWN
1 Sword handle
2 Bloodhound's cue
3 Hole in the head?
4 Summary
5 Wood strips
6 Jackie's second mate
7 Adornment for 49 DOWN
8 Talk like Jimmy Stewart
9 Seance sound
10 Candle count
11 Grow
16 Grit your teeth
20 Whatever amount
23 Director Kazan
24 Nauseated
25 Resorts international?
26 No longer paunchy
27 On the risque side
28 —friendly
29 Pack quantity?
32 "Platoon" locale
33 Friars Club event
35 Mr. Ziegfeld
36 Washington group
38 Rendezvous on the sly
39 As much as is allowed
42 Beehive State
43 Son of Jacob
44 Gin
45 Excepting
46 Eggs
47 Party bowlful
49 Sapporo sash

challenger THE INTERNATIONAL CROSSNUMBER GAME

DIRECTIONS: Fill each square with a number, one through nine.
• Horizontal squares should add to totals on right.
• Vertical squares should add to totals on bottom.
• Diagonal squares through center should add to total in upper and lower right.

THERE MAY BE MORE THAN ONE SOLUTION.

Today's Challenge
Time 5 Minutes
10 Seconds
Your Working Time Minutes Seconds

				35
	9			29
		8		26
6				30
			5	22
24	28	29	26	23

Send a bit of Home this Holiday.

A gift subscription to The Dallas Post will be enjoyed and remembered all year long. Your gift will bring weekly news, photos and advertising to a special friend or relative.

If you wish, we'll send a card announcing your gift. Renewal notices will come to you, so you can decide whether or not to continue the gift each year. Just fill out and send the form. We'll do the rest.

Send a Gift Subscription to



GIFT SUBSCRIPTION ORDER FORM		
	1 year	2 years
In Luzerne or Wyoming counties.....	\$18	\$32
Other PA, New York or New Jersey.....	20	36
All other states.....	22	40

Please enter a gift subscription to:

Name _____
 Mail address _____
 City _____ State _____ Zip _____

Ordered by:
 Name _____
 Mail address _____
 City _____ State _____ Zip _____

Send with payment to:
 The Dallas Post
 P.O. Box 366, Dallas, PA 18612

Do Do not send a card announcing this gift.

Or call 675-5211

Answers to Crossword, Challenger on page 16