



Dallas Class of '71 holds 25th Reunion

The Dallas High School Class of 1971 recently held its 25th reunion at Irem Temple's outdoor pavilion July 6. The following classmates attended: first row, Sheldon Jones, Steve Goode, Jim Culver, Rick Dodson, Dave Katyl, Bruce Goeringer, Tom Morenko, Chris Govin, Steve Withers, Carol Kalefa, Steve Crispell, Don LaBar, Roy Walters, Lauren Kintzer Marcikonis, Jill Daron Tomek, Pam Morris Ellis and Candie Wismer Levanda. Second row: Patty Koeb, Sandy Long Zoeller, Lauren Wills Kaiser, Kitty Vernon Alber, Kathy Brennan, Diane Morgan Gonzalez, Connie Edwards Higgins, Katie Gilmartin D'Andrea, Jocelyn Strunk O'Donnell, Diane Chadwick Coslett,

Rhonda Moore Kaiser, Barb Youngblood Pitcavage, Emilie Peters, Cathy Wilson, Jennifer Garris Withers, Barb Rice Goldsmith, Charlene Demming Fleming, Debbie Price Hadzor, Patty Burke, Gloria O'Brien Carr, Ann Wentz, Reba Brody Witko, Arlene Kozick and Sue Rother Piazza. Third row: Bill Gorton, Charles Hoffecker, Dave Lohmann, Dennis McCartney, Drew Taylor, Ron Bobeck, Ray O'Donnell, Harry Owens, Becky Walk Przeworski, Tom Burkhardt, Elwood LaBar, Debra Palonis Barth, Aine McDowell Goeringer, Gary Morris, Howard Garris and Bob Shoemaker. Also attending were: Gerald Fritzes, Cheryl Hontz, Gary Stern and Charles Wasserott IV.

Area Cubs, Boy Scouts slate signup sessions this week

"School Night for Scouting", the annual membership campaign of the Northeastern Pennsylvania Council, Boy Scouts of America, will kick off the week of September 8.

Cub Scout Packs and Boy Scout Troops invite new boys to join Scouting and will hold special open houses at meetings.

Boys in grades one through five can join Cub Scouting. Boys who have completed the fifth grade or are 11 years old can join the Boy Scouts.

Back Mountain Cub Scout packs having sign-up nights Sept. 12 are:

Cub Scout packs #155, Trucksville Methodist Church, Ed. Bldg., 6:30-8:30 p.m.

#232, Gate of Heaven Church School, Dallas, 6-8 p.m.

#241, Lehman-Jackson Elementary School, 7-8:30 p.m.

#281, Dallas Elementary School, and Dallas Elementary Church, 7-8:30 p.m.

#336, Northmoreland Fire Co., 7-8 p.m.

#444, Maple Grove Methodist Church, Sweet Valley, 6-8 p.m.

#530, Old Noxen School, 6-8 p.m.

#693, Lake-Noxen Elementary School, 6-8 p.m.

Signups are also open for Boy Scout troops:

#232, Gate of Heaven (New Bldg.), Sept. 12, 7 p.m.

#241, Lehman-Jackson Elem. School, Sept. 13, 7-8:30 p.m.

#281, Dallas Methodist Church, Sept. 12, 7:30-9 p.m.

#336, Centermoreland Meth. Church, Sept. 12, 6:30-8 p.m.

#444, Community Bible Church, Sept. 12, 6:30-8 p.m.

#693, Lake-Noxen Elem. School, Sept. 13, 6:30-8 p.m.

For more information, call the Scout Office at 451-0350.

Memorial, honor items donated to library

The Back Mountain Memorial Library, 96 Huntsville Road, Dallas, announces the addition of the following memorial books to their collection.

In memory of David Shelby "DNA And Destiny" presented by Jean Strojny. "The Ozone Dilemma" presented by Violet Sannet. "The Illustrated History of Mickey Mantle" presented by Don and Jean Gardner. "Samuel Beckett, The Complete Short Prose, 1929-1989" presented by Ruth Ann Tetchner. "World War II Collectibles" presented by Rose Kroft. "Tales and Sketches" presented by Mr. and Mrs. James Walker. "Autobiographies" presented by Mr. and Mrs. Robert E. Jones. "Practical Guide to Garden Design" presented by Howard and Aline Sprau.

In memory of Mrs. Francis Meeker "300 Years of Kitchen Collectibles" presented by The Ryan Family.

In memory of John "Jack" Pimm "Sing Your Heart Out, Country Boy" presented by Harry West and Betty Smith.

In memory of Marion (Mickie) Boyle "Camping For Kids" presented by Bonnie Kalish.

In memory of Margaret Louise Wilkinson "Oncology Nursing Care Plans" presented by VAMC Nursing Sunshine Club.

In memory of Homer Moyer "Tropical Rainforest" presented by D.H.S. "Back Room" Coffee Club.

In memory of Lucille Wasserbach "American Decades 1910-1919" presented by William R. and Catherine J. Thomas.

In memory of Beverly Marchetti "What Your 2nd Grader Needs To Know: Fundamentals of A Second-Grade Education" presented by James F. Roberts, Jr. "What Your 3rd Grader Needs to Know: Fundamentals of A Good Third-Grade Education" presented by Keller Wheelchair Lifts. "What Your 4th Grader Needs to Know: Fundamentals of A Fourth-Grade Education" presented by Al Pianelli. "What Your 5th Grader Needs to Know: Fundamentals of A Fifth-Grade Education" presented by August and Nancy Kramer.

In memory of Florence Rother "Novels and Stories" presented by Hazel Place.

In memory of Kurt Rosenthal "Bartok Companion" presented

by Mark A. VanLoon.

In memory of Victoria Zegarski "Oink", "Titch and Daisy" presented by Mr. and Mrs. Larry Schuler.

In memory of The Grandfather of Jessica Banks "Perfect The Pig" presented by Nancy Levinson and Family.

In memory of Great Grandma, Doris Spencer "Splash" presented by Austin.

In memory of Dorothy M. Cosgrove, "Secret Garden" presented by Ron and Betsy Balonis.

In memory of Megan Reilly, "My New Kitten", "Library Dragon" presented by Luzerne County Mothers of Twins and Triplets.

In honor of Judy Roeder "Artic Foxes" presented by the Faculty, Staff and Friends of the Dallas School District.

In memory of Anne G. Flannery "Time Present, Time Past" presented by Judie and John Phillips. "The Girls With the Grandmother Faces" presented by Peter John Brent. "U.S.A." presented by Rose Kraft.

In memory of Julia Wilkens "Growing Pains: Time and Change in the Garden" presented by Terry and Lee Eckert.

Lewis exhibits art at bank

The public is invited to view a display of watercolors by Marie Lewis at the Mellon Bank, Dallas.

Lewis, who retired after a teaching career with the Dallas School District, has devoted herself for the past four years to art. She taught the first kindergarten class in the Back Mountain area and served the children of the Dallas area in both the elementary and music fields.

Among the paintings on display are watercolor florals, a covered bridge landscape, a beautiful deer study, a handsome autumn scene of the Glen Lyon breaker and watercolor studies of her alma mater, West Chester State College (now University).

Lewis holds bachelor's degrees in both music and elementary education and studied art at both West Chester and Kutztown. She currently studies with Sue Hand.

The public is invited to view the display of original artwork in the lobby of the Dallas branch of the Mellon Bank during regular business hours through the end of September.

Christian Education classes resume at Trucksville UM

The Trucksville United Methodist Church has begun its new program year for Christian Education, with classes each Sunday morning from 9:30 to 10:45 a.m. in the educational facilities.

Classes are available for children and young people, nursery through grade 12. This fall's curriculum will focus on the life of Moses and specific scriptures. Two adult classes for in depth Bible study are led by Rev. W. Charles Naugle and Margaret Johnson.

The Sunday School superintendents are Sandra Race and Tania Reinert. Rev. W. Charles Naugle is pastor. The 1996-97 Sunday school teachers are: Kim Caffrey, Amy Jury, Jim and Linda Harding, Ronann Price, Holly Daubert, Debbie Jury, Janis Seeley, Linda Rossick, Tracey Crispell, Karen Williams, Colleen Bridger, Jennie Metzgar, Jennifer Metzgar, Kim Socash, Ned Bessmer, Paul Reinert and Lori Pettit.

Adult Bible study begins

"Atoms and Adam, Eve and evolution—God's choosing of Sarah and Abraham to start a special people" will be discussed at a six-week Bible study of the Book of Genesis at St. Paul's Lutheran Church.

Participants may attend either the Tuesday morning sessions, from 9-10:30 a.m. starting September 17, or the Wednesday evening sessions, 7-8:30 p.m., starting September 18.

Registration is not necessary and members of the community who do not belong to St. Paul's but are interested in the topics are encouraged to attend.

Interim pastor the Rev. Robert Bohm, will present the study. He has taught classical languages and literature as well as New Testament at Muhlenberg College, Allentown, and early church history at New York Theological Seminary.

ASK AN EXPERT

BANKING

Q: Can I still refinance my mortgage for home improvement even though I do not have much equity in my home?

A: Sure you can! Before you set your appointment, you will need a list of estimates for what improvements you plan on being done. Franklin First will escrow the funds and disburse them after the work is completed.

Remember, you still have time for exterior improvements. Winter is nearing and you need to act now if you are interested in applying.

If you have any questions, call your nearest Franklin First Savings Bank.

FRANKLIN FIRST

Rt. 309 and Upper Demunds Rd., Dallas, PA 18612
675-3621 or 800-262-1210



John Peterson
Dallas Branch Manager

FAMILY PRACTICE

Q: How do you differentiate between hay fever allergies and sinus infection?

A: Runny nose, coughing and sneezing are common components to these illnesses. A cold usually starts with a clear nasal drainage and a scratchy throat. Over the next week it progresses through a stage of nasal congestion and thicker drainage. It should clear without any treatment in 7-10 days. Allergies involve clear nasal drainage and may also include itchy and watery eyes and wheezing. They do not change over the course of time, except to become better or worse. Either allergies or colds may progress to a sinus infection. When this occurs, the nasal drainage will remain for a prolonged period. Headaches around the eyes are prominent. There may be a fever. Sinus infections require antibiotic treatment, so see your doctor if you suspect one.

Dallas Family Practice
100 Upper Demunds Rd., Dallas
675-2111



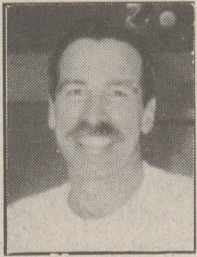
Diane A. Lowe, M.D.

HEALTH & FITNESS

A New Form of Exercise That's Almost 100 Years Old.

I train many rehab patients with pain in their lower backs on the Pilates table. Because it helps people build muscle mass, increase flexibility and gets them to move their limbs without involving the vertebral column, it's a great conditioner while the patients recover from injury.

Bill Ranieri
N.E. Pain & Rehab
836-2535



Bill Ranieri

INSURANCE

Q: Should Contractors Policies be reviewed?

A: Yes, contractors policies should specifically check their liability limits which can help them from a legal liability if someone is hurt from a job they are doing. Also, make sure to inventory tools and make sure they are covered on your policy and to what limits. Business vehicles should be insured on a business policy, not personal auto to avoid claims problems.

NATIONWIDE Insurance
Gordon Business Center, Suite 1,
194 N. Memorial Hwy,
Shavertown, PA 18708
675-5234



William T. Huck
Associate Agent

INVESTING

Q: I am a self-employed individual looking to establish a nest-egg for my retirement. What is available to me?

A: Most people who are employees of larger companies have access to the company 401-k Plan, and/or the company pension plan to which contributions can be made to build a retirement fund. But for people like yourself who are self-employed, you are solely responsible for establishing your own retirement fund. In addition to your IRA account where you can contribute up to \$2,000 per year, the self-owned business can establish what is called a Simplified Employee Pension (SEP) plan, or a Keogh Plan. The self-employed individual can then contribute 15% of annual salary (up to \$30,000) in this tax-deferred pension account. For complete details, please call the number below.

Merrill Lynch
600 Baltimore Drive, Wilkes-Barre, PA 18702
(717) 829-8048 • 1-800-275-1885



Ross G. Macarty
Financial Consultant

COUNSELING

Q: What's the difference between depression and ordinary sadness?

A: Clinical depression is a serious and common disorder of mood that is pervasive, intense and attacks the mind and the body at the same time. Depression can result in a serious disturbance of work, social, and bodily functioning. Unlike grief or passing sadness, depression usually does not respond to a change in circumstances (for example, good news) nor does it dissipate with time (in contrast to the grief over the death of a loved one). Depression can last for months or years if left untreated, resulting in disruption of relationships and professional productivity, disability or death.

Clinical depression may be associated with an imbalance of chemicals in the brain. Other factors include: life experiences such as severe stress or loss, medical illnesses, and certain personality traits and heredity. In most people, depression can be treated successfully, either with medication or psychotherapy, or a combination of the two. Antidepressant medications affect brain chemistry, and after several weeks can yield important and sustained relief. Antidepressants are not habit-forming and may be useful for long-term prevention of recurrences of depressive episodes or against chronic depression.

Depression is a whole body illness involving physical symptoms, moods, and thoughts. It affects the way you eat and sleep, the way you feel about yourself, and the way you think about things. A depressive disorder is not a passing blue mood. It is not a sign of personal weakness or a condition that can be willed or wished away. People with a depressive illness cannot merely "pull themselves together" and get better. Without treatment, symptoms can last for months or years.

John Malia, R.N.
Director of Assessment and Referral
Behavioral Health Service of N.E. PA
149 Dana Street, Wilkes-Barre, PA 18702
717-829-7900 • 1-800-624-9902

The professionals and specialists on this page have studied and worked to become expert in their fields. They are ready to serve you with their knowledge.

Ask an Expert is an advertising feature of The Abington Journal. We use readers' questions whenever possible. The answers and opinions are those of the individual advertiser, and not necessarily those of The Abington Journal.