

# CALENDAR

Calendar items are published free of charge. Generally, items will appear the two weeks prior to an event. To submit material, send or bring it to The Dallas Post, 45 Main Road, Dallas PA 18612. Deadline is Friday at 3 p.m.

## COMMUNITY

**JUNE 27, TOPS.** Interested in losing weight and having fun doing it: come to a new chapter of TOPs (Taking Off Pounds Sensibly) meeting every Thursday, except July 4, starting at 5:30 p.m. at the Shavertown United Methodist Church, 163 N. Pioneer Ave. For more information call Crys at 675-4336.

**JUNE 29, CAR WASH,** Shavertown Vol. Fire Co., rain date June 30, at the fire house, 170 Main St., Shavertown. Donation \$3.00. All proceeds benefit the Shavertown Vol. Fire Co.

**THE 50TH ANNUAL BACK MOUNTAIN MEMORIAL LIBRARY AUCTION** will be held July 11 through 14, rain or shine, at the library grounds, Huntsville Road, Dallas. Auction seating is limited, so attendees are urged to arrive early and bring their chairs. Hours are: July 11 from 6 to 11 p.m.; July 12 from 6 p.m. to midnight; July 13 from 4 p.m. to midnight; and July 14 from 4 p.m. until all items are sold. Children's auction is July 13 from 10 a.m. to 1 p.m. For more information, call 675-1182.

**THROUGH OCT. 27, FLEA MARKET,** Last Sunday of month. J.R. Davis Vol. Fire Co., Idetown-Dallas, 11 a.m.-4 p.m. \$7.00 table. Call 639-2031 for information.

**BINGO** every Wednesday night at the Jonathan R. Davis Fire Hall, Idetown. Early birds 5:30 p.m.; regular series 6:30 p.m. Call 639-5755 for more information.

**BINGO** every Thursday night at the Kunkle Fire Hall, Rte. 309, Kunkle, Jackpot. Early birds 5:45 p.m., regular games 7:15 p.m.

**BINGO** every Friday night at the Shavertown Fire Hall, Main St., Shavertown. 7 p.m. Free admission, pay as you go. Hard card game with paper card specials.

## CLUBS/GROUPS

**HARVEYS LAKE CRIME WATCH ASS'N.** meets the last Wednesday of every month at the borough hall, 7 p.m. For more information call the borough office at 639-2113.

**IDETOWN UM CHURCH COUPLE'S CLUB** meets the third Saturday of each month January through June, and September through December. New members are always welcome.

## CLUBS/GROUPS

**S.P.A.W.N.** (Society of Poets and Writers of the Northeast) meeting. Second Sunday of each month. Call Steve at 639-2320 for more information.

**ALCOHOLICS ANONYMOUS** meetings in the Back Mountain: **Monday** - 7:15 p.m. (OD) and 8:30 p.m. (OS), Prince of Peace Church, Main Street, Dallas.

**Tuesday** - 7:30 p.m. (OD) at the Lehman Fire Hall, Lehman.

**Wednesday** - 7:30 p.m. (OD) at Loyalville Methodist Church.

**Friday** - 8 p.m., (CD) at St. Therese's Church Rectory, Pioneer and Davis St., Shavertown.

OD: Open discussion; OS: Open soakers.

## MUSIC

**JUNE 27, PETER WOLF,** rock singer/Birthday party, WEZX-FM (107.1). Genetti's Best Western, Wilkes-Barre, doors at 8 p.m. Tickets at door, \$7. Free at radio station appearances.

**JUNE 28, MARY BAKER,** folk singer and storyteller. Nesbitt Park, Wilkes-Barre, noon. Free and open to the public. 643-7922.

**JUNE 29, EDDIE MONEY,** rock singer. Bud Light Amphitheatre, Harveys Lake, \$15 a carload, available day of show. 824-1107.

**JUNE 29, THE ALLMAN BROTHERS BAND,** southern rock. Montage Mountain Performing Arts Center, 7 p.m., Advance, \$30, \$25 and \$20. Day of show, \$32.50, \$27.50 and \$22.50. Ticketmaster, Montage box office and Ticketmaster Charge-by-Phone, 693-4100 or 212-336-7669.

**JULY 7, FOREIGNER, REO SPEEDWAGON and PETER FRAMPTON,** rock bands, Montage Mountain Performing Arts Center, Scranton. 6:30 p.m. \$32.50, \$25, \$17.50. Ticketmaster, Montage box office, and Ticketmaster Charge-by-Phone, 693-4100 or 212-336-2000. Tickets day of show are \$35, \$27.50 and \$20. 969-7669.

**CIRCLE EIGHTERS OF WILKES-BARRE,** invites new members interested in modern-western square dancing. St. John's Lutheran Church, Academy & S. River Streets, Wilkes-Barre. Mondays at 8 p.m. for details, 472-9051.

# Shakespeare classic at Theatre-on-the-Green

A performance of the always popular romantic comedy *A Midsummer Night's Dream* is hard to improve upon. But picture the National Players, a professional acting company, an outdoor stage on a beautiful summer evening, and all the magic and mayhem of the play carrying away everyday cares, leaving the audience smiling.

That will be the scene at Theatre-on-the-Green's ninth annual Shakespeare production at College Misericordia on July 12, 13 and 14. Tickets are now on sale for the 8 p.m. performances at \$8 for chair or bleacher seating, or \$50 for a table for four. Limited lawn seating will be available at the door for \$4. For tickets or information call 674-6719.

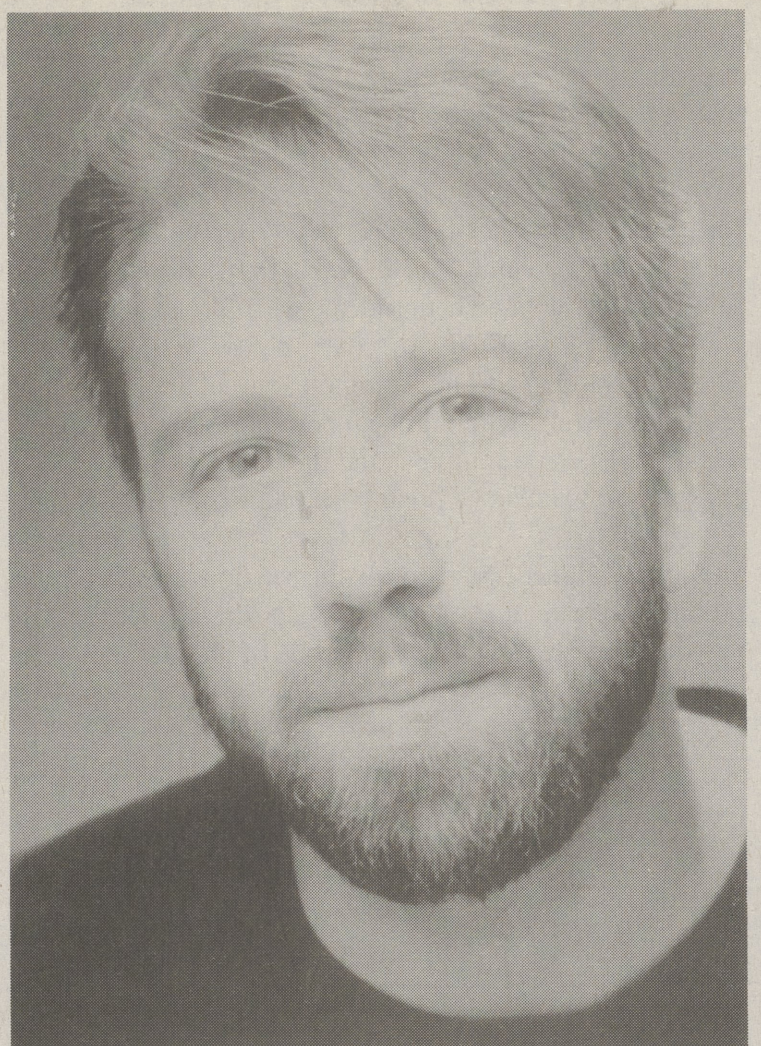
*A Midsummer Night's Dream* is a play about the capriciousness of lovers and the riotous confusion brought about by the introduction of a touch of magic. The story begins with plans for a royal couple's traditional marriage, but pure pandemonium results from

the combination of "love-juice," mixed-up lovers, craftsmen and supernatural fairies.

*A Midsummer Night's Dream* is said to be one of Shakespeare's own favorite plays. It contains traditional conventions of Elizabethan drama, such as the play within a play, the rustic setting, and the characters, presumably changed for the better, returning to society to live in harmony.

In addition to the play, Theatre-on-the-Green offers other programs related to the presentation of the play. A free Shakespeare Symposium will be held on July 9 at 7 p.m. in Merrick Hall.

A Shakespeare workshop is offered for students grades 7 through 12, in which students gain hands-on experience in the theatre, lighting, sound and staging techniques. In the Production Assistants program, senior high school and college students work directly with the professional cast and crew. For information about these programs, call 674-6719.



David Conaway will play Nick Bottom in Theatre-on-the-Green's presentation of *A Midsummer Night's Dream*.

## OUTDOORS

**JUNE 29, SIERRA CLUB BIENNIAL FLEA MARKET,** 9 a.m.-1 p.m. at South Abington Elementary School, Rt. 6, in Chinchilla. Public invited. For information, 586-1930.

**JUNE 30, MOUNTAIN BIKE** with the Sierra Club at Brady's Lake, a 16 mile scenic loop on moderate trails. Helmets mandatory. Bring water and lunch. Meet at YMCA in Dunmore, exit 55B off I-81 at 9:30 a.m. Public invited. For information call 586-1930.

**JULY 3, JEFF SCHMIDT,** governmental liaison and environmental lobbyist for the PA Sierra Club, will be guest speaker at the monthly meeting, discussing the ongoing assault on environmental laws and give a wrap-up of the PA General Assembly. 7:30 p.m. at Dorranceton UM Church, Wyoming Ave., Kingston, across from Nesbitt Hospital. For information, 586-1930.

## OUTDOORS

**JULY 14, HIKE TO SUNFISH POND,** a natural crater on the Kittatinny Mts., near the Delaware Water Gap. Bring water, lunch, swimsuit, and sturdy boots (the trail is rocky). Meet at the YMCA in Dunmore, exit 55B, off I-81, 9:30 a.m. Public invited. For information call 586-1930.

**FRANCES LOCUM STATE PARK,** Note: If you are a person with a disability and you wish to participate in any of the programs, contact Jerry Kozlansky at 696-3525. Pennsylvania AT&T Relay Service 1-800-654-5984 (TDD).

**JUNE 28, WILD AND USEFUL PLANTS OF PENNSYLVANIA,** 8:30 p.m.-9:30 p.m. The campground amphitheater will provide the setting for this slide program for ages 8 and up.

## OUTDOORS

**JUNE 29, TOUCH THE EARTH,** 2 p.m.-3:30 p.m. Learn to use your five senses in the discovery of the outdoors. This hike for all ages will take the visitor through many of the diverse park habitats. Meet in the Visitor Center.

**JUNE 29, NATIVE AMERICAN HISTORY,** 8 p.m.-9 p.m. Centers around the lifestyles of the people of Lenapehoking. Meet at the amphitheater of the campground.

**JUNE 30, DCNR SCAVENGER HUNT,** 12 p.m.-1:30 p.m. DCNR is celebrating its first birthday. Children of all ages will enjoy this test of knowledge and skill. Birthday prizes will be awarded to the winning teams. Meet in the visitor center.

## STAGE

**JUNE 26-29, SOME AMERICANS ABROAD.** King's College Summer Theatre Program, Administration Building Auditorium, 133 N. River St., Wilkes-Barre. Tickets available at a nominal cost. For more information, contact 826-5825.

## AT THE KIRBY

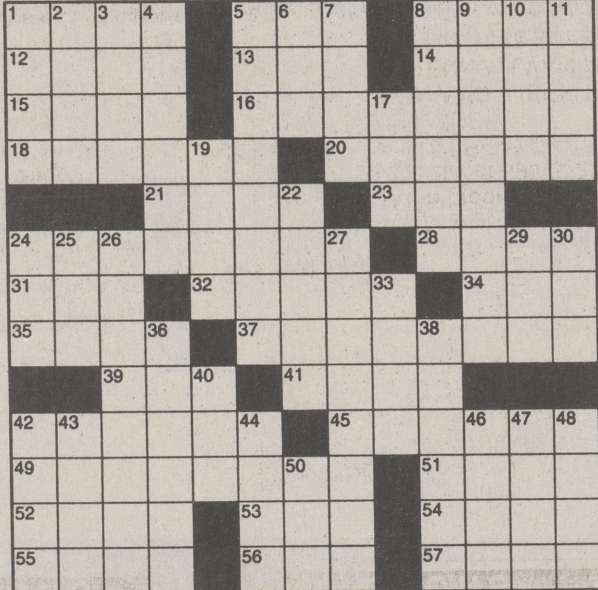
**JUNE 26-27, JANE EYRE,** movie drama. Wed., 1 and 8 p.m. Thurs., 8 p.m. \$3 matinees; \$5 evenings. Presented by the Kirby Center.

**JULY 11-13, SENSE AND SENSIBILITY,** movie drama. Thurs., 1 p.m.; Fri., 8 p.m.; Sat. 8 p.m. Presented by the Kirby Center.

# CROSSWORD CORNER

**ACROSS**  
 1 Stiller's partner  
 6 Gnome  
 11 Part of USSR  
 14 "Casablanca" character  
 17 Emphasis  
 19 Navy builder  
 20 Cherbourg  
 21 On the — vive (watchful)  
 22 Start of a remark by John Yeck  
 25 Colorado native  
 26 Director  
 27 Behalf  
 28 Ersatz  
 30 Actress  
 31 Fiesta target  
 35 Little guys  
 36 Feed the kitty  
 39 Zagreb native  
 40 South  
 43 Part 2 of remark  
 48 Machine part  
 51 Hold the title  
 52 Military command  
 53 Wishes undone  
 54 Wolsey's successor  
 55 Shriner's chapeau  
 56 Orchestra section  
 57 Wide-mouthed pitchers  
 59 It suits some  
 60 Rope in  
 62 Tina's ex  
 63 Pianist  
 64 Prickly plant  
 66 Require  
 68 Part 3 of remark  
 71 Maintain  
 72 Mourns  
 75 Part of Q.E.D.  
 76 Octopus  
 77 Octopus  
 78 Outer limits  
 81 Permission  
 82 Tarzan, for one  
 84 Stringed instrument  
 86 84 Across accessory  
 87 Melodious  
 88 Famed orca  
 89 Serpent sounds  
 90 Take advantage of  
 91 Computer acronym  
 92 Part 4 of remark  
 96 Classical physician  
 97 Composer Copland  
 98 Word with fry or freeze  
 99 Stowe sight  
 101 Medicine-show  
 103 Frequent traveler?  
 106 Scoone smear  
 109 Inventive sort?  
 110 Highlander's hat  
 113 "Birds —" feather...  
 114 End of remark  
 120 Env. abbr.  
 121 Easy as —  
 122 Britten's "Peter —"  
 123 Legendary  
 124 Essential  
 125 Affirmative vote  
 126 You'll get a rise out of it  
 127 Restaurateur  
 128 Down

**DOWN**  
 1 LeBlanc of "Friends"  
 2 Return address?  
 3 Served well  
 4 Ring counter  
 5 Relative of 92  
 6 Asian holiday  
 7 Team scream  
 8 Sapporo sash  
 9 Ford of  
 10 Aboveboard  
 11 Scottish storyteller  
 12 Exclude  
 13 Town that knows its onions?  
 14 Cattlefish kin  
 15 Mustangs and Pintos  
 16 Demeanor  
 18 Soho streetcar  
 19 Sault — Marie, Mich.  
 23 Aspen item  
 24 Novice  
 29 Pitch  
 30 Aachen article  
 31 Preserve a petunia  
 32 Actress Skye  
 33 "Uh-uh!"  
 34 Put away a pizza  
 36 Overhead  
 37 Less dilapidated  
 38 Dar-es-Salaam denizens  
 39 Was "it"?  
 41 "This is only —"  
 42 Ltr. addenda  
 44 Capture a crook  
 45 Walk confidently  
 46 Spineless  
 47 Dancer Jose  
 48 Kick in, in a way  
 49 Turgenev  
 50 Aulry or Wilder  
 54 Man of rare gifts?  
 57 Violinist  
 58 Textile term  
 59 Actress Ullmann  
 61 Get one's goat  
 63 Ambiance  
 65 Ophelia's love  
 67 First lady? "Song of the South" uncle  
 70 Fresno fruit  
 72 Elated  
 73 City on the Truckee  
 74 Be generous  
 77 Supreme leader?  
 79 Dayan of Israel  
 80 Tidy the terrace  
 83 Illustrious  
 84 Sun screen  
 85 Fireplace  
 88 Whalers' grp.  
 89 Mata —  
 92 Flavorful seed  
 93 — chi (martial art)  
 94 Pop artist Peter  
 95 Fuss  
 96 Practical joke  
 99 Sam of "Ben Casey"  
 100 One of a bunch?  
 102 Like the Rockettes  
 103 Thwack  
 104 Molokai's neighbor  
 105 Sportscaster  
 106 Mindy's mate  
 107 Morning wear  
 108 Atahualpa, for one  
 109 — Gatos, Calif.  
 110 "Rosanna" rockers  
 111 MD's area  
 112 Kid's creation?  
 115 Literary preposition  
 116 Acapulco aunt  
 117 Morning hrs.  
 118 Badminton divider  
 119 "Flying Down to —"



**ACROSS**  
 1 The world according to Arp  
 5 Clear tables  
 8 "... baked in —"  
 12 Kyoto sashes  
 13 Bat material  
 14 Old VCR format  
 15 Art medium  
 16 Intrepid  
 18 Word with map or pitcher  
 20 It's often behind two big hips  
 21 "...to thine own — be true"  
 23 Neighbor of Ven.  
 24 Scaffolding at Cape Canaveral  
 28 Arizona city  
 31 Have bills  
 32 Winning  
 34 One of the Trinity  
 35 Call on a pager  
 37 Military post  
 39 Ph.D., e.g.  
 41 Jack Sprat's diet  
 42 Peevish temper  
 45 They run up and down your legs  
 49 Unmindful  
 51 Mine entrance  
 52 Being, to Feustus  
 53 Ski champ Tommy  
 54 "...and master of —"  
 55 Teaspoonful, perhaps  
 56 Hold the deed to  
 57 Showdown directive  
 58 Down  
 1 "The Lady or the Tiger?"  
 2 Rose's love  
 3 Pickling herb  
 4 Hockey statistic  
 5 Enigmatic  
 6 Exploitation  
 7 Persian cat?  
 8 flowering  
 9 Unrivaled  
 10 Lead-in to boy or girl  
 11 Relaxed  
 17 Charles Dutton sitcom  
 19 Architect Saarinen  
 22 Re the unborn  
 24 Sailor  
 25 Reventral fear  
 26 Unnecessary  
 27 JFK adviser Theodore  
 29 Jack of "Barney Miller"  
 30 Abby's sis  
 33 Supplicate  
 36 Carolina river  
 38 A way from the shore  
 40 Toothpaste type  
 42 Lean-to  
 43 Bolivian buck  
 44 Megalomaniacal mariner  
 46 Skunk's defense  
 47 Famed 15th-century ship  
 48 Dither  
 50 Ms. Piggy

**challenger** THE INTERNATIONAL CROSSNUMBER GAME

DIRECTIONS:  
 Fill each square with a number, one through nine.  
 • Horizontal squares should add to totals on right.  
 • Vertical squares should add to totals on bottom.  
 • Diagonal squares through center should add to total in upper and lower right.

Answers to Crossword, Challenger on page 14

Today's Challenge  
 Time 13 Minutes  
 6 Seconds  
 Your Working  
 Time Minutes  
 Seconds

23				
8	16			
8	26			
2	26			
8	24			
21	16	29	26	20

# PIZZA PERFECT

## Sicilian Style

PIZZERIA

16 Carverton Road, Trucksville

Call Ahead **696-2100**

**Eat in or Take Out**  
**Try Our Wings!**

Mon.: 4:00 pm - 10:00 pm  
 Tues., Wed., Thurs.: 4:00 pm - 11:00 pm  
 Fri.: 11:00 am - 12:00 Midnight  
 Sat.: 12:30 pm - 12:00 Midnight • Sun.: 2:00 pm - 11:00 pm

# WICK

# Yankee Fan Express

- Reserved Box Seat
- Gourmet Bag Lunch
- Roundtrip Motorcoach on Martz Trailways

**\$45.00 per person**

Wednesday, July 3, 1996 vs. Boston  
 Sunday, July 28, 1996 vs. Kansas City  
 Saturday, August 17, 1996 vs. Seattle  
 Wednesday, August 21, 1996 vs. California

Call Today for Reservations  
**344-1221 or 655-6660**

Listen to Yankees Baseball all season long on...  
**WICK 1400 AM**